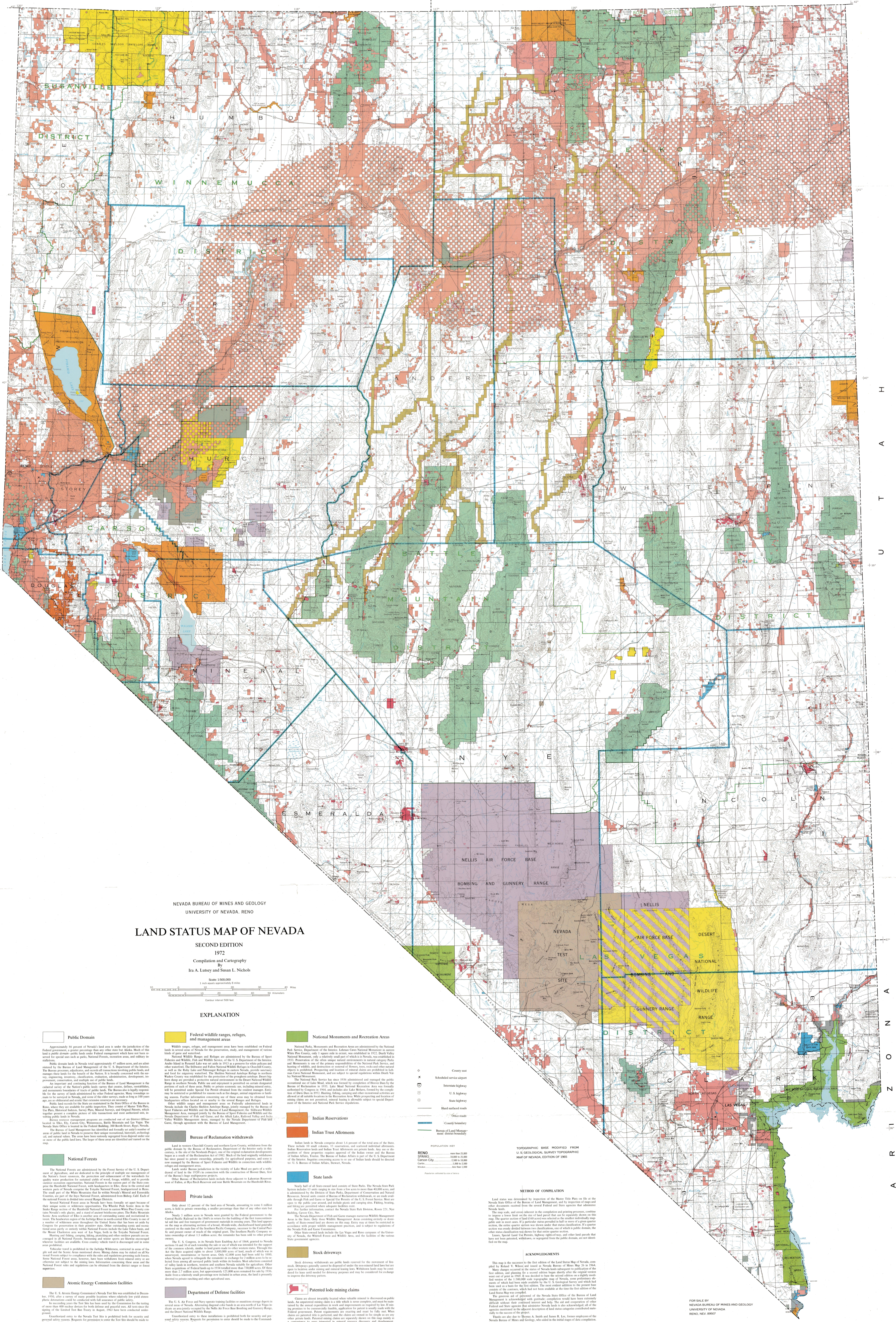


O R E G O N I D A H O

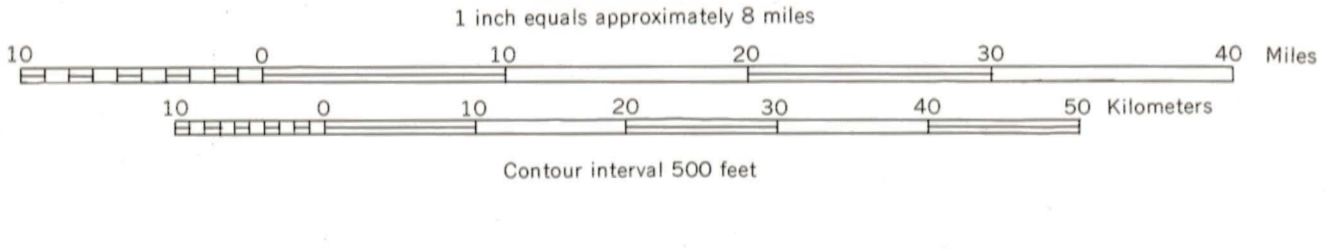
C A L I F O R N I A A R I Z O N A



NEVADA BUREAU OF MINES AND GEOLOGY UNIVERSITY OF NEVADA, RENO

LAND STATUS MAP OF NEVADA

SECOND EDITION
1972
Compilation and Cartography
By
Ira A. Lutsey and Susan L. Nichols



EXPLANATION

- Public Domain**
Approximately 30 percent of Nevada's land area is under the jurisdiction of the Federal Government, a greater percentage than any other state in the United States. Much of this land is public domain public lands under Federal management which have not been reserved for special use such as public National Forests, recreation areas, and military reservations.
- Federal wildlife ranges, refuges, and management areas**
Wildlife ranges, refuges, and management areas have been established on Federal lands in Nevada for the preservation, study, and management of various species of birds and mammals.
- National Monuments and Recreation Areas**
National Parks, Monuments, and Recreation Areas are administered by the National Park Service, Department of the Interior. Lake Mead National Monument is situated in White Pine County, and is the only National Monument in Nevada. Death Valley National Monument, established in 1933, is the only National Monument in Nevada which is not situated on Federal land. The Nevada National Antiquities Act of 1908 authorized the President to establish National Monuments on public lands under Federal management.
- Indian Reservations**
Indian Reservations are administered by the Bureau of Indian Affairs, Department of the Interior. The Nevada Indian Reservations are the Toiyabe, Paiute, and Shoshone Reservations.
- State Lands**
Nearly half of all State-owned land consists of State Parks. The Nevada State Park System is administered by the Department of State Parks, Department of Conservation and Natural Resources.
- Private Lands**
Only about 17 percent of the land area of Nevada, according to some 8 million acres, is held in private ownership.
- National Forests**
The National Forests are administered by the Forest Service of the U. S. Department of Agriculture, and are dedicated to the preservation and management of the Nation's forest resources.
- Bureaus of Reclamation withdrawals**
Land in various Humboldt County and northern Leno County, withdrawn from the public domain by the Bureau of Reclamation, Department of the Interior early in this century, is the site of the Nevada Power Project.
- Atomic Energy Commission facilities**
The U. S. Atomic Energy Commission's Nevada Test Site was established in 1951, after a series of tests were conducted at the Nevada Test Site.
- Department of Defense facilities**
The U. S. Air Force and Navy operate training facilities in various areas of Nevada.
- Indian Trust Allotments**
Indian lands in Nevada comprise about 1.6 percent of the total area of the State.
- Stock driveways**
Stock driveways are public lands reserved for the movement of livestock.
- Patented lode mining claims**
There are about 100,000 patented lode mining claims in Nevada.

POPULATION KEY

RENO	more than 20,000
SPRINGS	10,000 to 20,000
Carson City	2,000 to 10,000
Other	1,000 to 2,000
Unincorporated	less than 1,000

METHOD OF COMPILED
Land status was determined by inspection of the Master Title Plans on file at the Nevada State Office of the Bureau of Land Management, and by inspection of maps and other documents received from the several Federal and State agencies that administer Nevada lands.

ACKNOWLEDGMENTS
This map is the result of the first edition of the Land Status Map of Nevada, compiled by Richard W. Wilson and issued as Nevada Bureau of Mines Map No. 25 in 1964.