

5410 0001

(146)

item 1

R e p o r t

o n

T H E V U L C A N M I N E S C O M P A N Y

Winnemucca - Humboldt County,

N e v a d a

Examination: Oct. 27-31/13  
Report: Nov. 29, 1913.  
By: W.H. Sirdevan.

*See also map files  
(1 map)*



R e p o r t

o n

T H E   V U L C A N   M I N E S   C O M P A N Y

The Vulcan Mines Company - formerly called the Northwestern Mining Company - is located at Winnemucca, Humboldt County, Nevada. The property comprises five claims located on the eastern side of Winnemucca mountain and about two miles from the Southern Pacific railroad.

The accompanying map gives the location of the samples, the extent of the development work, and a general idea of the geology of the mountain.

The only showing worthy of mention is the so-called "iron-ledge" on the Vulcan claim. An open cut exposes the ore body to a depth of 25 feet, and shows a width of about 24 feet. A cross-cut tunnel located immediately below this open cut gives a width of 35 feet at a vertical depth of about 50 feet. The foot wall is distinct, strikes N 57 W and dips 66 to the south. The hanging wall is not well defined. On the surface the ore can be traced for but a short distance east and west from the open cut - so that the ore body is probably a lens shaped chimney rather than a vein as the strong footwall seems to indicate.

Samples No. 40 - 45 inclusive were sent to the Tonopah office by F.M. Robins - owner of the Vulcan Mines Company. These samples were assayed prior to making the examination, and gave very high returns. The Vulcan vein was represented as an "iron ledge" over twenty feet in width and traceable through four claims. The sample sent in and represented as coming from this ore body contained a large piece of high-grade cinnabar, bright red hematite, black hematite, and yellow, earthy limonite. These pieces were assayed separately. The cinnabar assayed 53% mercury, the red hematite - 2% mercury, and the black hematite - 1% mercury.



On examination of the property it was found that the samples sent from the Empire and Winnemucca claims were picked specimens from very narrow seams.

The Vulcan ore body as exposed by the open cut and tunnel is the oxidized portion of a mass of light colored iron pyrite - several nodules of the unoxidized primary ore being found within the oxidized ore.

No cinnabar could be found at the mine or in Mr. Robins office. Also no trace of mercury could be found in the samples taken. Mr. Robins denied having sent any cinnabar ore with the iron sample .  
Assay Results.

See the following sheet for a list of the samples taken and the assays obtained.

#### Terms

The Nevada Vulcan Mines Company has issued 1,000,000 shares of stock: 500,000 shares outstanding and 500,000 in the treasury. The outstanding stock is offered at 15 cents per share - no payments being required for one year.

#### Conclusions

The property is not recommended.



No.	Width	Assay								Remarks
		Au	Ag	Pb	Cu	Zn	Fe	Hg	Total Value	
40	-	tr	\$2.80	27.2% \$23.39	7.8% \$23.40	-	-	-	\$49.69	Winnemucca Claim- Ore determined as Bournonite
41	-	tr	tr	-	-	-	65.7%	1%	-	Vulcan Claim- Black Hematite
42	-	tr	\$.47	-	-	-	62.9%	2%	-	Vulcan - Red Hematite
43	-	tr	tr	-	-	-	6.1%	53%	-	" Cinnabar
44	-	\$.160	\$.52.11	32.7% \$28.12	-	-	-	-	\$81.83	Empire - White cerrusite
45	-	\$.120	\$.18.62	43.1% \$37.07	-	-	-	-	\$56.89	" yellow "
Samples 40-45 sent to Tonopah Office by F.M. Robins - Owner of Nevada Vulcan Mines Company - 10/19/13.										
46	20'	tr	\$.16	0	tr	tr	51.4%	0	-	Vulcan Claim - partial sample across vein - tunnel level - 20' measured from F.W.
48	15'	tr	\$.09	0	tr	tr	44.3%	0	-	Vulcan Claim - from end of No. 46 to H.W. - 15'
47	Grab	tr	\$.09	0	tr	tr	39.2%	0	-	Vulcan Claim - grab of red hematite from a streak cut by No. 48.
49	18'	tr	\$.07	0	tr	tr	40.9%	0	-	Vulcan Claim - partial sample in open cut - 25' below surface.
50	6'	tr	\$.07	0	tr	tr	55.8%	0	-	Vulcan Claim - from end of No. 49 to F.W.
51	-	-	-	-	-	tr	23.5%	0	-	Vulcan Claim - Grab of red hematite from open cut.
52	6'	tr	\$.52	0	-	-	-	-	\$.52	Empire Claim
53	1'	tr	\$.127	0	-	-	-	-	\$.127	" "
55	1'	tr	\$.138	0	-	-	-	-	\$.138	" "

## ASSAY RESULTS

Nevada Vulcan Mines Co.

Winnemucca - Nevada.

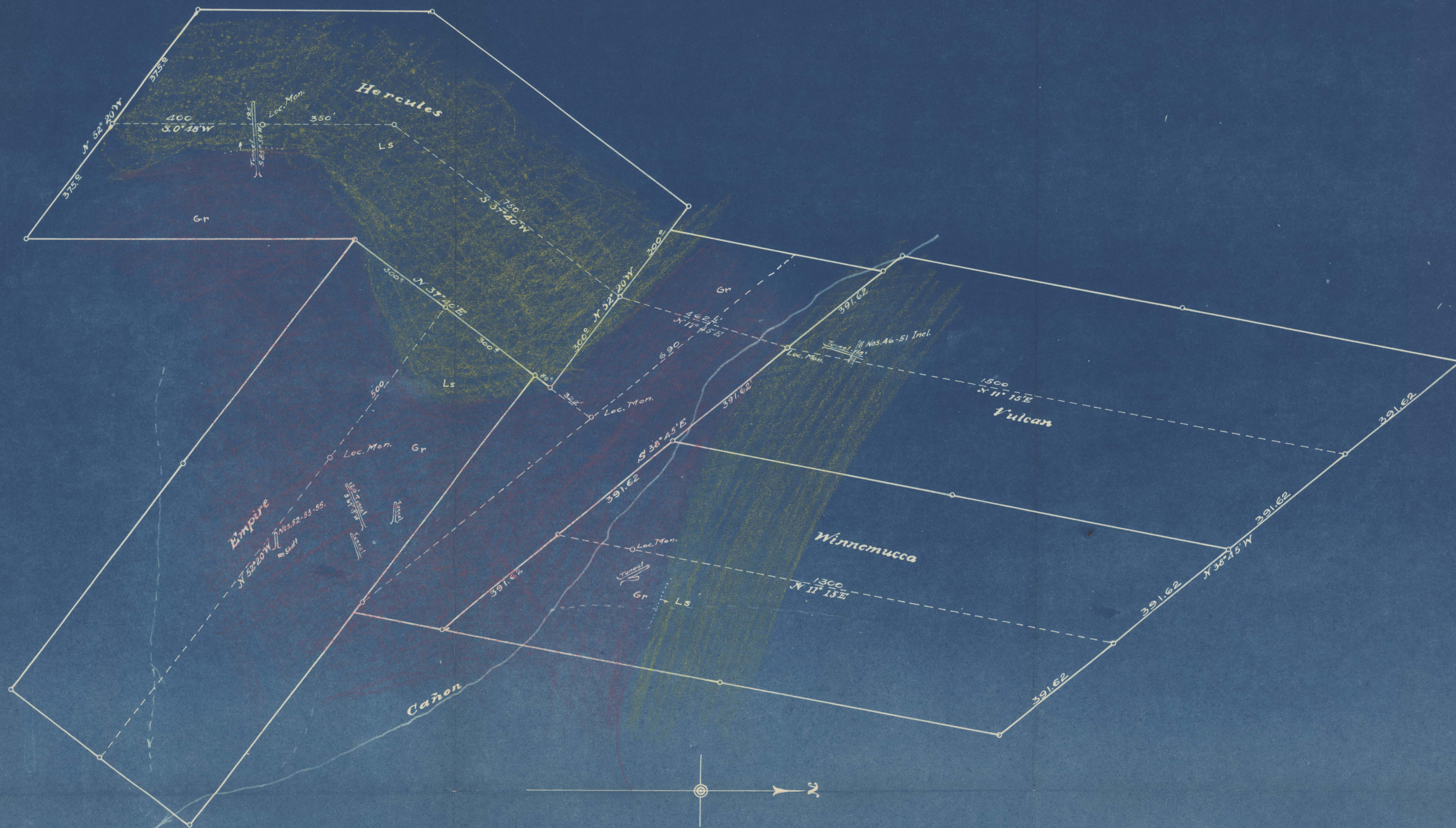
Oct. 27-31-1913.

146

item 1



146 (item 1)



PLAT  
OF THE  
NORTH WESTERN MINING CO'S.  
CLAIMS ON WINNEMUCCA MOUNTAIN  
Winnemucca Mining Dist.

HUMBOLDT COUNTY, NEVADA.

APRIL 14TH, 1907. SCALE 1 INCH = 200 FEET

H. H. SHELTON,  
U.S. DEPT. MIN. SUR.

0 200 400 ft

54100001

146  
item 1

54100001

Tracing from  
Blueprint - 11/25/10.