

7-8-64 Lake District

RMS

D 8

Arnold Brokaw
Chas. Whittington

Chain gte Rowe Canyon Cu prospect
 2' gte v. 1560 E, 605
 Chain little Mah. Cp? in gte
 Joana " " along late fractures
 Pilot In Laketown @ of bleach zone NNW
 Guil Beds N 20 W 75 N 0 turned
 Sev 17 E of Rowe fault
 Silt above Eureka & Kanosh
 Lake Ag down canyon in gte v. 1560 E
 Laketown 2.0 gte

Photo Old Quaker mine - Collared in chains
 Or fault contact N Vert (?)
 of Joana above (E) & Chainman
 below (W) in Jasperoid an or
 Brown jasperoid + white gte v. 1560 E
 and glob. which cut jasper & replace ls.
 Look E XG adit into faulted face of Joana
 Whittington 125' of XG (2500 ton dump) covered
 jasperoid in all attitudes
 mal, az, Ag reported

Top part of Joana is jasp. facies
 Most of " " " @ mine more

Jasp. may be related to thrusting
 white gte & mineralization may both be related

Various to N oligocene or later

Photo D9 Look N @ mine - Jasp - Chain. Ward Mt.

Pb Ag Sewmill Canyon E of Lind
 Gyp 1st draw W of Brokaw Camp
 County line oil well south of Prestons

Filed



FORT SCHELLBOURNE remains as one of several reminders of the historic old west to natives and visitors alike. These crumbling ruins served first as a Pony Express station and later, as a fort for the U.S. Cavalry.



GHOST TOWNS

Eight ghost towns are within easy driving distance for the historic buffs. They range in size and in repair.

Among the better known of the former mining boom camps are Hamilton, the former county seat; Treasure Hill; Osceola, the gold town with the special ditch for hydraulic mining; Ward, Taylor and others.

Locations are pinpointed on a map on pages 10 & 11. In winter weather, visitors are urged to check with highway officials to determine conditions of roads leading to the ghost towns, many of which are in excellent repair year-round.



THESE SIX giant beehive stone monuments stand today as a symbol of the once roaring mining town of Ward and are interesting attractions for the tourist.



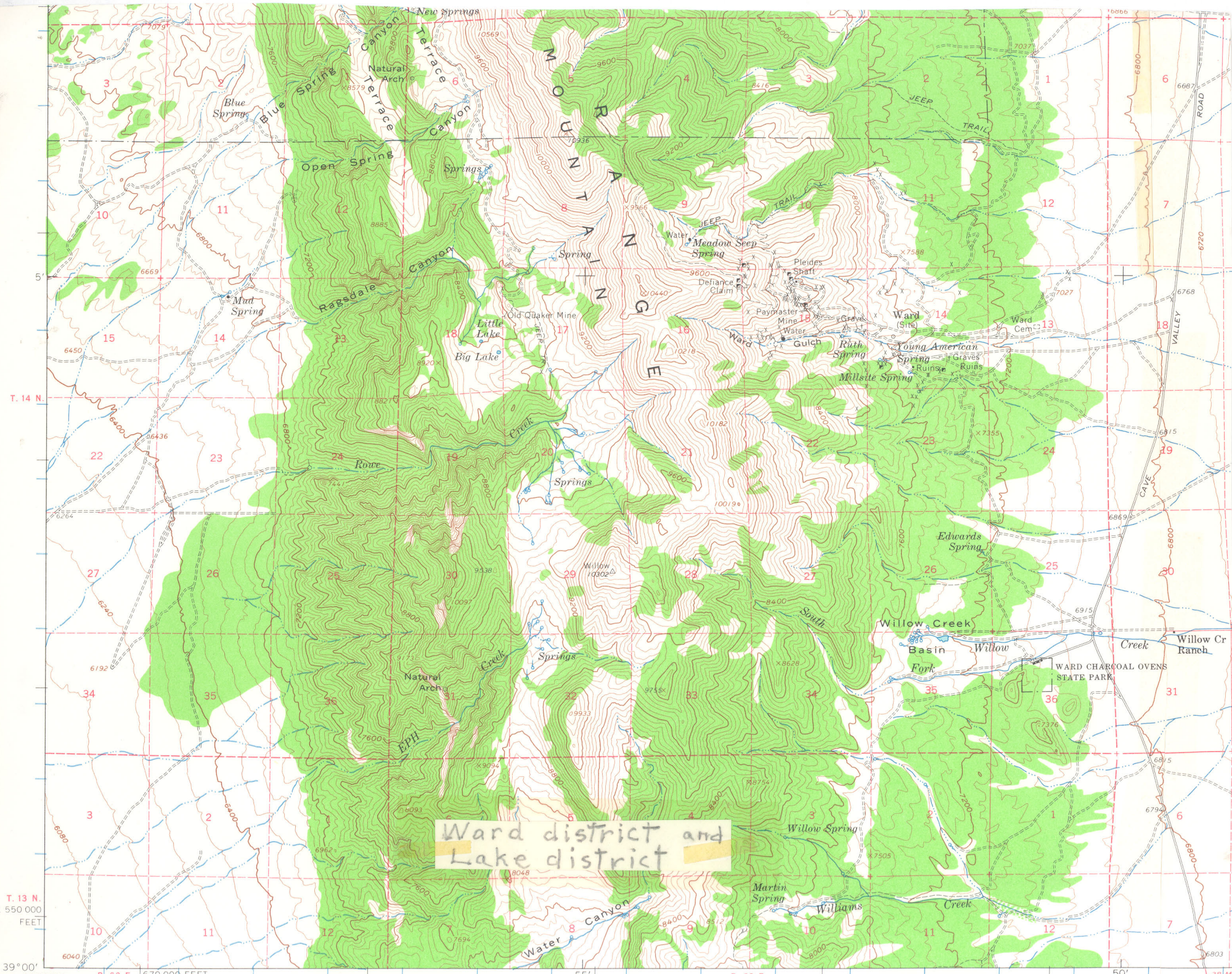
CHARCOAL OVENS

These giant stone kilns were built about 1876 to make charcoal for the smelter at the Town of Ward. Now unused, they are set up with tables inside for picnics and offer cooling shade as well as historical interest.

The thirty-foot high ovens are located just 18 miles south of Ely. They can be reached by traveling south from Ely on U. S. Highway 93 to the Charcoal Ovens State Park turnoff, then by graded road to the Ovens themselves. A trip to these monuments of the past is quite worthwhile and interesting.



WARD CHARCOAL OVENS. Just a few minutes from downtown Ely are these historic remnants of the old mining days in the West. Ghost Towns of Ward & Taylor are nearby.



Ward district and
Lake district

T. 13 N.
1 550 000
FEET
39°00'
115°00'
R. 62 E. 670 000 FEET

R. 63 E.

38°00'