

I, HARRY H. HUGHES, BEING FIRST DULY SWORN, DEPOSE AND SAY THAT THIS MAP IS CORRECTLY DRAWN TO THE DESIGNATED SCALE FROM FIELD NOTES OF A SURVEY MADE BY ME ON THE 21ST DAY OF MAY, 1959, FOR WM. MC GOWAN; THAT IT TRULY AND CORRECTLY REPRESENTS A TRACT OF LAND ON HIS ROOSEVELT AND BANNER LODGE MINING CLAIMS.

DESCRIPTION OF TRACT:

BEGINNING AT COR. NO. 1. WHICH IS A POINT FROM THE NW CORNER OF SECTION 1, T. 2N., R. 42E BEARS N 32° 53' W A DISTANCE OF 748 FEET; THENCE S 36° 40' W 200 FT TO COR. NO. 2; THENCE S 53° 20' E 300 FT TO COR. NO. 3 (THIS COURSE IS APPROXIMATELY ALONG HIGHWAY 95 RIGHT-OF-WAY); THENCE N 36° 40' E 200 FT. TO COR. NO. 4; THENCE N 53° 20' W 300 FEET TO THE BEGINNING.

CORNER NO. 4 BEARS N 66° 26' W 673 FEET FROM COR. NO. 2 OF THE KEYSTONE LODGE CLAIM, THE CORNER BE- ON THE BANNER LODGE CLAIM'S SOUTHERNLY SIDE LINE.

Harry H. Hughes
NYE COUNTY SURVEYOR R.E. 599

SUBSCRIBED AND SWORN TO BEFORE ME THIS 13th DAY
OF JUNE, 1959

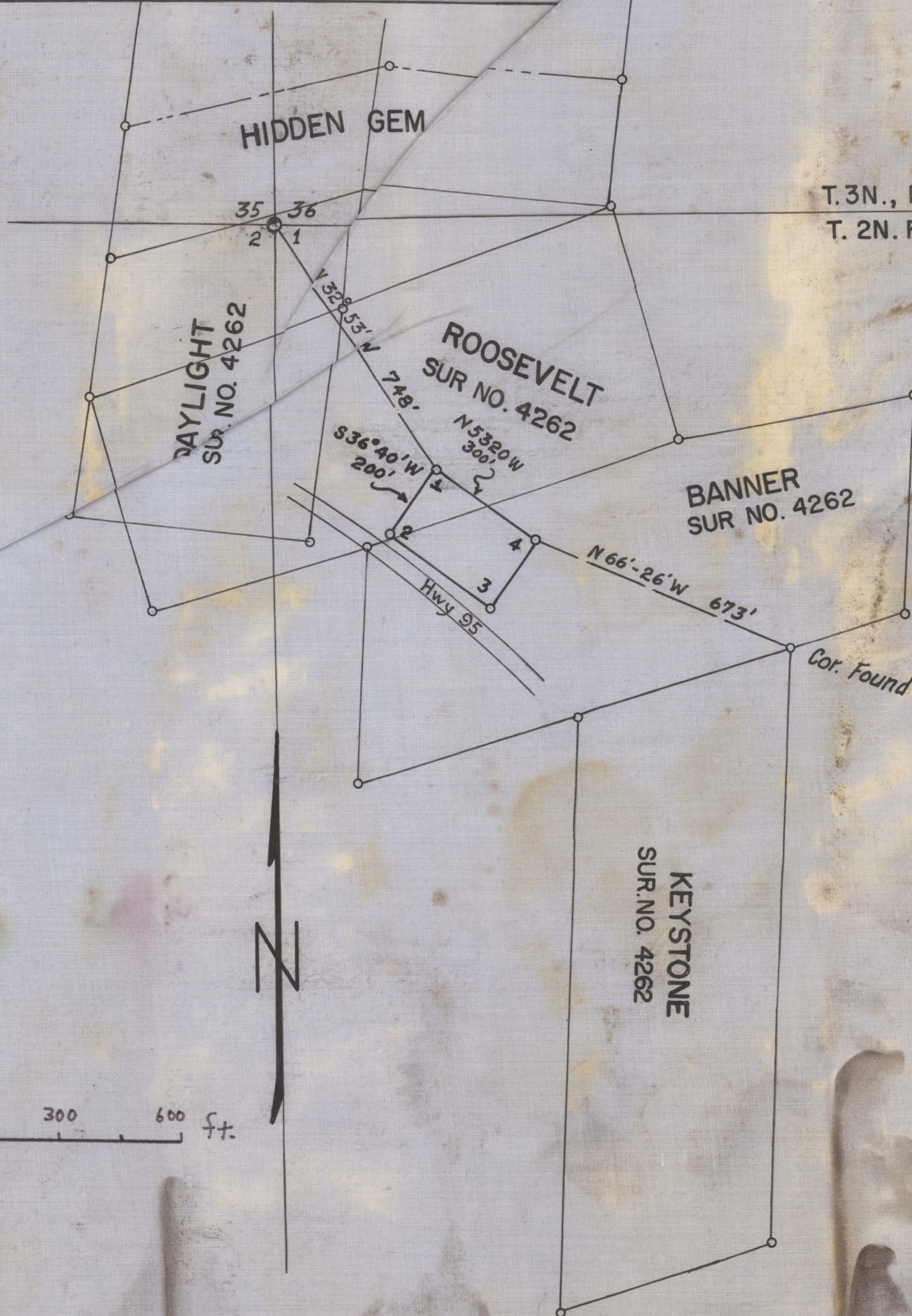
Endora V. Murphy
ENDORA MURPHY, CLERK OF NYE COUNTY

MAP
OF
TRACT OF LAND OF WM. MC GOWAN
TONOPAH, NYE COUNTY, NEVADA

SCALE: 1 IN. = 300 FT

JUNE 1959

0 300 600 ft.



158

254