

# SURFACE GEOLOGY OF THE OASIS TALC MINE

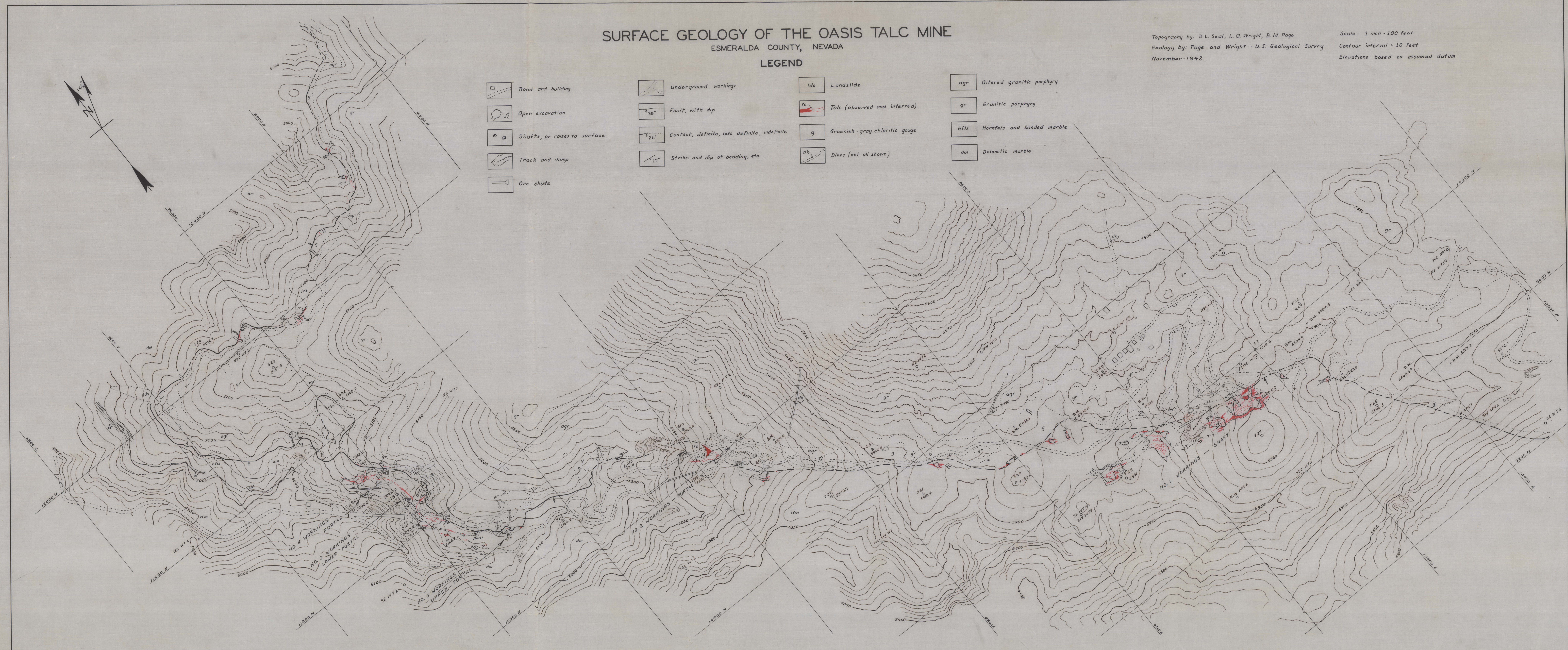
ESMERALDA COUNTY, NEVADA

Topography by: D.L. Seal, L. Q. Wright, B.M. Page  
 Geology by: Page and Wright - U.S. Geological Survey  
 November 1942

Scale: 1 inch = 100 feet  
 Contour interval = 10 feet  
 Elevations based on assumed datum

## LEGEND

- |                              |  |                               |                            |
|------------------------------|--|-------------------------------|----------------------------|
| Road and building            | Underground workings                         | Landslide                     | Altered granitic porphyry  |
| Open excavation              | Fault, with dip                              | Talc (observed and inferred)  | Granitic porphyry          |
| Shafts, or raises to surface | Contact; definite, less definite, indefinite | Greenish-gray chloritic gouge | Hornfels and banded marble |
| Track and dump               | Strike and dip of bedding, etc.              | Dikes (not all shown)         | Dolomitic marble           |
| Ore chute                    |  |                               |                            |



4720 0074

4500 0874

FIG 5

102