

4620 0003

Washoe Co. - general

NW-21-5

Fe, Cu, U?

Item 50
(13 of 18)

Mining District: BLACK HAWK PROSPECT, COPPER CIRCLE PROSPECT
(Iron, Copper, Uranium?)

T. 25 N., R. 18 E.
Washoe County, Nevada
USGS State Line Peak 7.5-min. quadrangle (1964), and
Dogskin Mountain 15-min. quadrangle (1957)

GENERAL BACKGROUND

The two prospects will be discussed separately.

I. Black Hawk Prospect

The Black Hawk Prospect is located in section 16 on the northeast slope of State Line Peak in the Fort Sage Mountains. Iron ore is the commodity of interest at this property. Uranium mineralization reportedly occurs in the vicinity of the Black Hawk Prospect (1).

There has been no apparent production from the prospect.

GEOLOGICAL AND TECHNICAL DATA

At the Black Hawk Prospect, granitic rocks and associated aplite dikes intrude metavolcanic rocks. These rocks are unconformably overlain by tuffs of Tertiary age. The magnetite ore occurs in the metavolcanic rocks and outcrops are scattered over an area of about half a square mile. The largest ore zone exposed is about 15 feet wide and 50 feet long. A magnetic survey (see attached map) indicated the presence of another ore body about 350 feet long to the southeast (2).

POTENTIAL FOR DEVELOPMENT

The iron ore mineralization is limited in extent, and according to Bonham (1) is of poor grade. Accordingly, the future potential for iron ore production from the property is probably remote. Several adits and prospect pits explore the iron mineralization at the property.

The potential for uranium production is unknown.

COMPANIES AND CLAIMANTS ACTIVE IN AREA

The Black Hawk Prospect is under lode location by:

1. GLORY HOLE Group
LeRoy Purdy
PO Box 1151, Susanville, Calif.
April 1972
(2 lode claims)

Bennett, Jan. 1973

II. Copper Circle Prospect

The Copper Circle Prospect is located in sections 32 and 33, on the south flank of State Line Peak in the Fort Sage Mountains. Copper mineralization is visible in an old prospect pit that is currently being worked by the present claimants. The claimants reported that samples from the prospect were submitted to the University of Nevada and assayed at \$13.60 per ton in copper. There has been no production from the property.

GEOLOGICAL AND TECHNICAL DATA

Malachite and azurite coat fracture surfaces in brecciated metamorphic rocks at the Copper Circle Prospect. The largest exposed area of brecciation is greater than 15 feet in width, but mineralization appears to be confined to a zone approximately 3 feet wide. No primary sulfides were observed when the property was examined and the linear extent of mineralization, although unknown, appears small. Several other old prospect pits in the vicinity contain secondary copper mineralization on fracture surfaces in the rock.

POTENTIAL FOR DEVELOPMENT

The copper showings appear to be economically submarginal, both in grade and extent. It is unlikely that the property will be an economic producer of copper in the future.

Past mining work in the area consists of several prospect pits. When the property was examined, the claimants were attempting to expose additional mineralization by scalping the area with a bulldozer.

COMPANIES AND CLAIMANTS ACTIVE IN AREA

The following list identifies known claimants in the area:

1. COPPER CIRCLE Group
Copper Circle Corp.
PO Box 3736, Stateline, Nev.
Mar. 1971
(7 lode claims)

SELECTED REFERENCES

1. Bonham and Papke: Geology and Mineral Resources of Washoe and Storey Counties, Nevada; Nev. Bur. Mines Bull. 70, 1969.
(Includes Geologic Map of Resource Area)

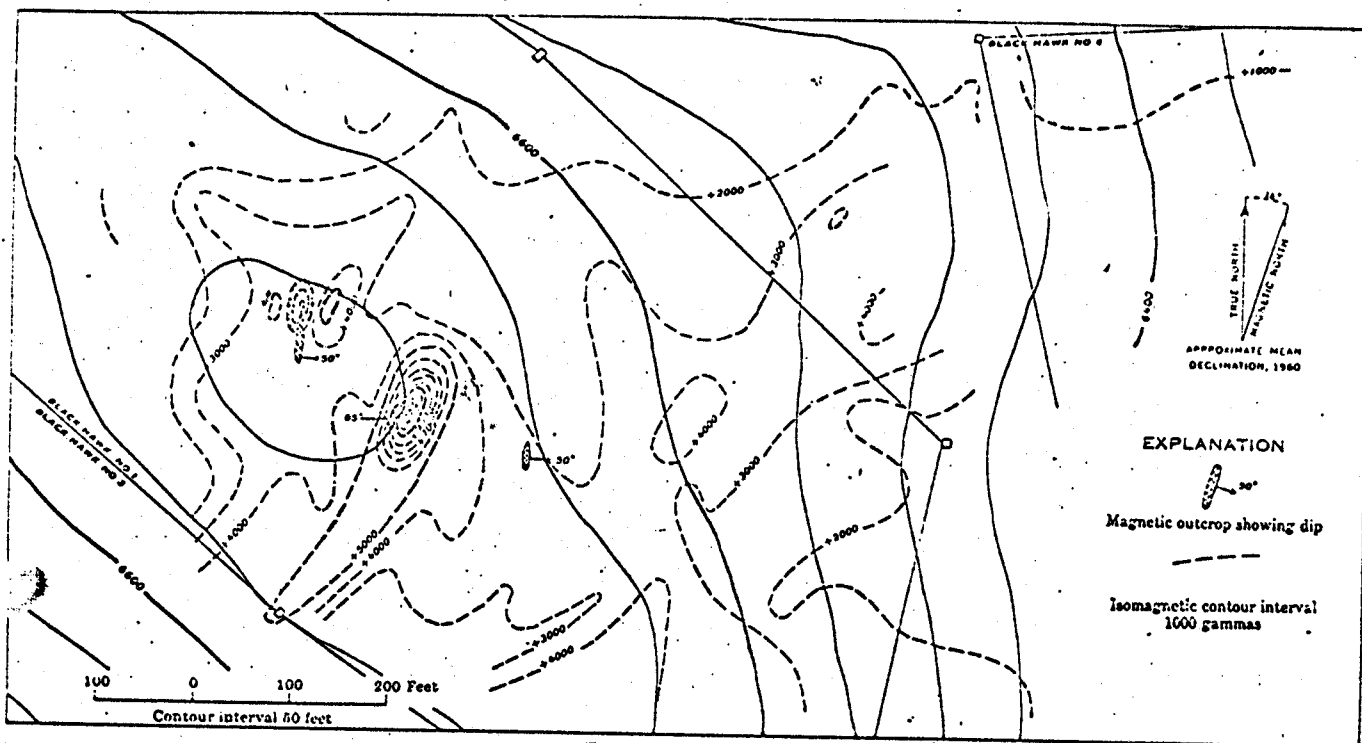
Bennett, Jan. 1973

2. Shawe et al.: Iron Ore Deposits of Nevada, Part C; Nev. Bur. Mines
Bull 53, 1962.

FIELD EXAMINATION

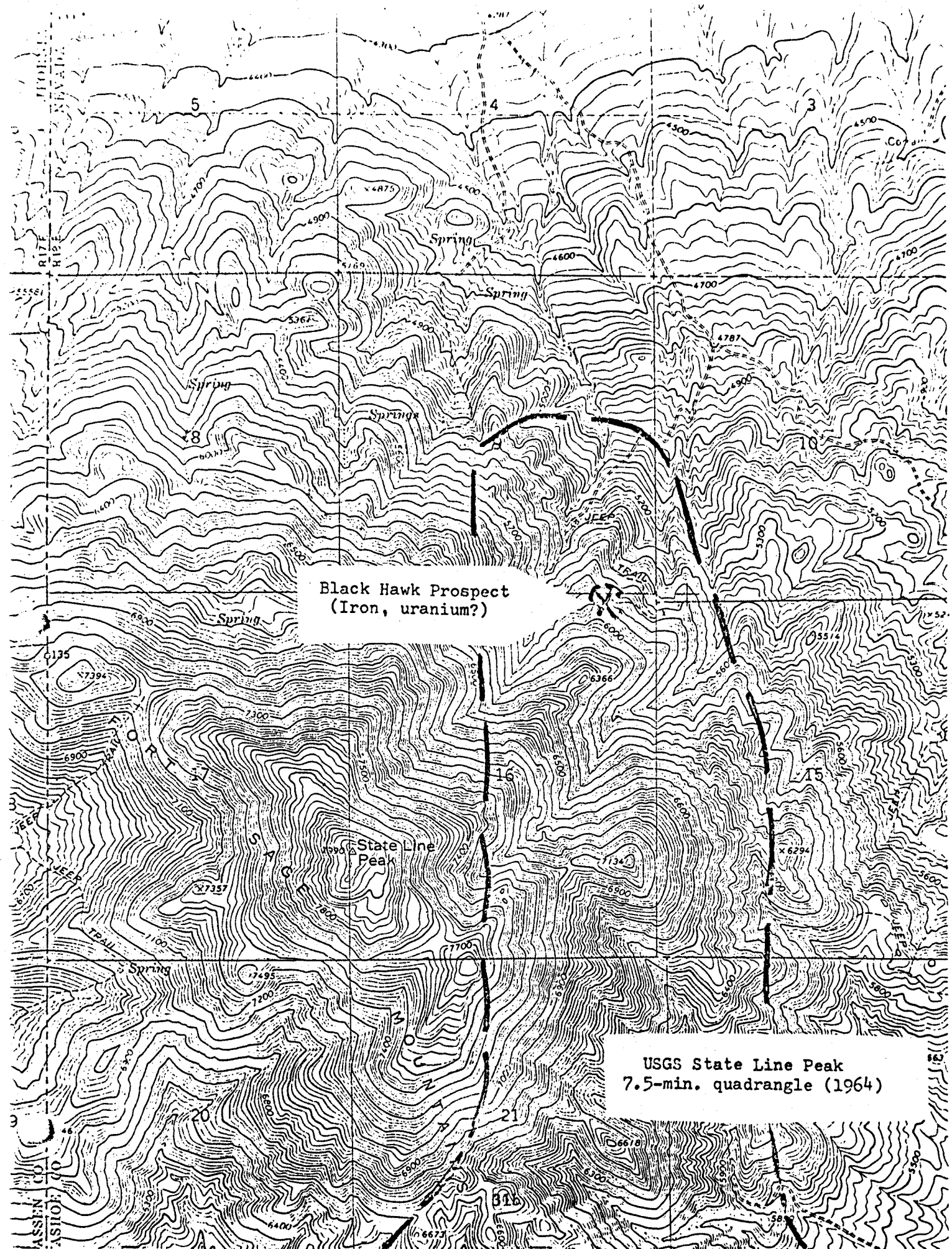
Bennett, Nov. 1972

Bennett, Jan. 1973



Magnetic survey by
E. L. Stephenson, 1953
Published with permission

Magnetic map of the western part of the Black Hawk iron prospect, Washoe County, Nevada.



Washoe Co. - general

Item ~~88~~

89

Mineral Resources Inventory and Analysis

of the

Pyramid Resource Area

Carson City District
Nevada and California

by

R. E. Bennett and H. W. Mallery

1973

*see Washoe County-general
file for the complete
introduction to this report
(0160 0035)*