

4290 0003

(14) Item 4

NW-28-2
W, Cu, Ag, Ag, Fe

Mining District: WHITE CLOUD
SHADY RUN
(Tungsten, Copper, Silver, Gold, Iron)

T. 22-23 N., R. 33-34 E.
Churchill County, Nevada
AMS Reno Map Sheet 1971

GENERAL BACKGROUND

The White Cloud district located on the west slope of the Stillwater Mountains, was discovered in 1868. A small amount of copper ore was shipped prior to 1912. Between 1948 and 1952, 202 tons of ore was shipped. Total production from the district is less than \$15,000. Some gold and silver was recovered from the copper ores.

The Shady Run district is located several miles south of the White Cloud district. There was no recorded production in the district until 1958 when tungsten production began. By 1967 total production amounted to over 10,000 units.

Placer gold is known to occur in Fondaway Canyon, but there has been no development.

A few truckloads of iron ore have been produced in the Shady Run district.

GEOLOGICAL AND TECHNICAL DATA

The copper deposits in the White Cloud district occur in metamorphosed limestones that have been intruded by a granite pluton. Mineralization consists of secondary copper minerals.

Rocks in the Shady Run district are predominately of Triassic age and consist of slate and phyllite with minor interbedded quartzite and limestone. Quartz veins are common in the rocks but they contain little mineralization.

The tungsten deposit is in a coarsely crystalline marble in Fondaway Canyon. Scheelite mineralization occurs in pods and as single crystals.

POTENTIAL FOR DEVELOPMENT

The area will continue to attract prospectors, but any large-scale production in the near future is doubtful. Modern exploration techniques could, however, disclose commercial mineralization. In fact, the Stillwater Range as a whole has a potential for valuable mineralization beneath younger volcanic rocks.

Bennett, 1975

COMPANIES AND CLAIMANTS ACTIVE IN AREA

- | | | |
|---|--|---|
| 1. IRON MAN Group Gene Bailey, et.al. 2240 Schurvz Hwy Fallon, Nevada (lode claims) | 2. QUICKTUNG Group George Fish Fallon, Nevada (lode claims) | 3. BLACK EAGLE Group Ken Gotchal, et.al. 3770 Harrigan Rd. Fallon, Nevada (lode claims) |
|---|--|---|

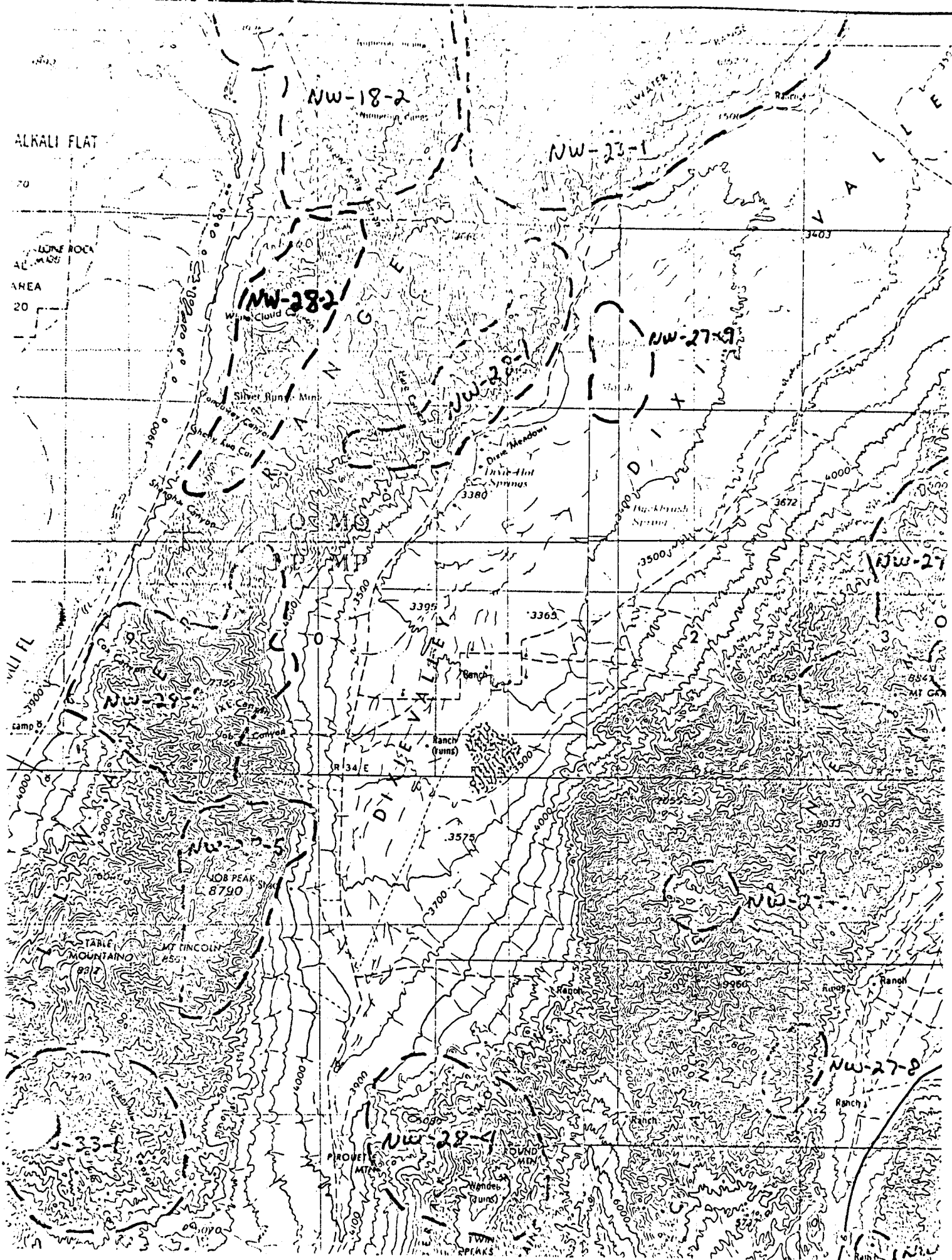
SELECTED REFERENCES

1. Vanderburg, 1940, Reconnaissance of mining districts in Churchill County, Nevada.
2. Willden and Speed, 1974, Geology and mineral deposits of Churchill County, Nevada.

FIELD EXAMINATION

Bennett, 1975

Bennett, 1975



Taken from:

Mineral Resources Inventory and Analysis
of the

Clan Alpine Planning Unit

Carson City District

by

R. E. Bennett and C. L. Hoke

1975

*for complete introduction
see Churchill Co.-general
files Item 17*