

8  
4190 0005

(207)  
item 5

See map files

(1 map)

R e p o r t

o n

The OLD KLONDYKE and EMMET Properties

Table Mountain - Mineral County,

N e v a d a

Examination: Nov. 14-20-1914.  
Report: Dec. 11, 1914.  
By: W.H. SIRDEVAN.

# R e p o r t

## o n

### The OLD KLONDYKE and EMMET Properties

These properties are located near Table Mountain, Mineral County, Nevada, fourteen miles north from Mina via Battle's Wells, and about seventy-five miles north from Tonopah.

The OLD KLONDYKE property comprises three patented claims - "THRUSH", "COMMODORE", and "G.B.R.". (See Sheet-1-).

The EMMET claims are all unpatented and are designated as follows: "HOME", "HOME FRACTION", "GOLD REEF", "GOLD REEF FRACTION", "GOLD REEF NO.2", and "GOLD REEF NO.3".

The remaining claims shown on Sheet-1- viz. "BEST FRIEND", "LITTLE BESS", AND "WILD HORSE GROUP" - are owned by T. J. O' NEIL, Millers, Nevada.

#### Maps, Sections, etc.

SHEET-I-. shows the topography, surface geology, all important workings, surface prospect cuts and shafts, all prominent outcrops, location of surface samples with assay results, and the property lines as marked on the ground, and to conform with a sketch of the claims as made by Robert Emmet - owner of the above EMMET property.

Sheet-II-. shows a vertical section through the main 200' shaft on the COMMODORE claim of the Old Klondyke property, a general map of the underground workings, and a special map for each level with geology, location of samples, and assay results.

Sheet -III-. is a map of the workings and surface cuts in the vicinity of Copper Tunnel on the "G.B.R." claim of the OLD KLONDYKE property. The location of samples and the assay results are given.

### Geology and Origin of the Ore.

The country rocks are limestone and diorite-porphyry with surface distribution as shown on Sheet -I-. There are two kinds of limestone - a light-colored, crystalline variety, and a hard, dense, blue lime. The light-colored limestone appears to have been more favorable for mineralization. The porphyry is probably intrusive although none of the contacts observed were characteristic in this regard. The occurrence of the rugged, reddish-brown outcrops either along an igneous contact or in the immediate vicinity suggests a contact metamorphic origin for the ore. The ore is thoroughly oxidized, and consists principally of limonite and hematite, with bands and irregular bunches of a dense, flinty, red to brown hornfels. In the upper levels of the main 200' shaft and at several of the outcrops there is evidence of silicification, and at one outcrop typical garnetized limestone was observed. In the lower workings at the 200' shaft two specimens of sulphide ore were found with the oxides. One was a light-colored pyrite with no indication of copper, and the other a dark, altered sulphide (pyrite?) with copper stains - both in a quartz gangue. It is probable that the unoxidized ore is a lean iron sulphide with a little copper.

### Sampling Results.

Surface Samples See Sheet -I-. for location and assay results. Eleven samples were taken from the red outcrops as shown. The average value obtained was as follows: Gold: \$1.51; Copper: 0%.

Main Shaft Workings. The underground samples are shown in detail on Sheet -II-. The average value of ore on the different levels is as follows:

60' Level	-----	\$4.12	per ton.
85' "	-----	\$3.25	" "
115' "	-----	\$1.41	" "

A COMPOSITE from samples No. 621 to 629 Inclusive - covering samples on the 60' and 85' levels assayed: Gold: \$3.20; Silver: 0. Copper: 0. ( This is lower than an average from the above figures as it includes two samples Nos. 626 and 627 each assaying but \$0.40 per ton. These samples are on the 85' level and - on account of their location (parallel to the footwall) were not included in obtaining

the average - \$3.25 for this level.).

Shaft Dump Sample. A general sample from the dump and from about fifty sacks of ore assayed: Gold: \$3.20; Silver: 0; Copper: 0. This result checks the composite sample from the upper levels.

There is a rapid decrease in the average value of the ore with depth. The lowest figure is about the same as that obtained from averaging all of the surface samples of this same type of ore. None of assays at the shaft workings show any copper.

Copper Tunnel Samples. See Sheet -III- for location and assay results. There is more evidence of copper in this section of the property than elsewhere. At the mouth of the tunnel there is a mineralized zone 25.' in width which averages : Gold\$0.20; Copper:0.506% Partial sample results are shown on Sheet-III-.

#### Former Sampling Results.

On Oct.25,1914, three grab samples were taken from the main shaft workings. The assay results were as follows:

60' Level -----	No.565	-	\$5.60
115' Level -----	No.566	-	\$3.20
130' Crosscut -----	No.567	-	\$0.60

The results are a little higher than these obtained from the more careful sampling on the present examination.

#### CONCLUSIONS.

The workings at the main shaft have developed an irregular chimney of oxidized, iron ore to a depth of 130 feet. This ore body is from 50' to 75' in length, and from 10' to 40' in width. The grade of ore varies from \$4.12 on the upper level to \$1.41 on the lowest level - the average value of the developed ore being a little less than \$3.00 per ton. Assays show no copper content.

The conditions encountered in this development - viz. impoverishment with depth, extreme irregularity, etc., - may be taken as an indication of what will happen with the prospecting and development of the numerous other outcrops of reddish-brown ore.

CONCLUSIONS. (Cont.)

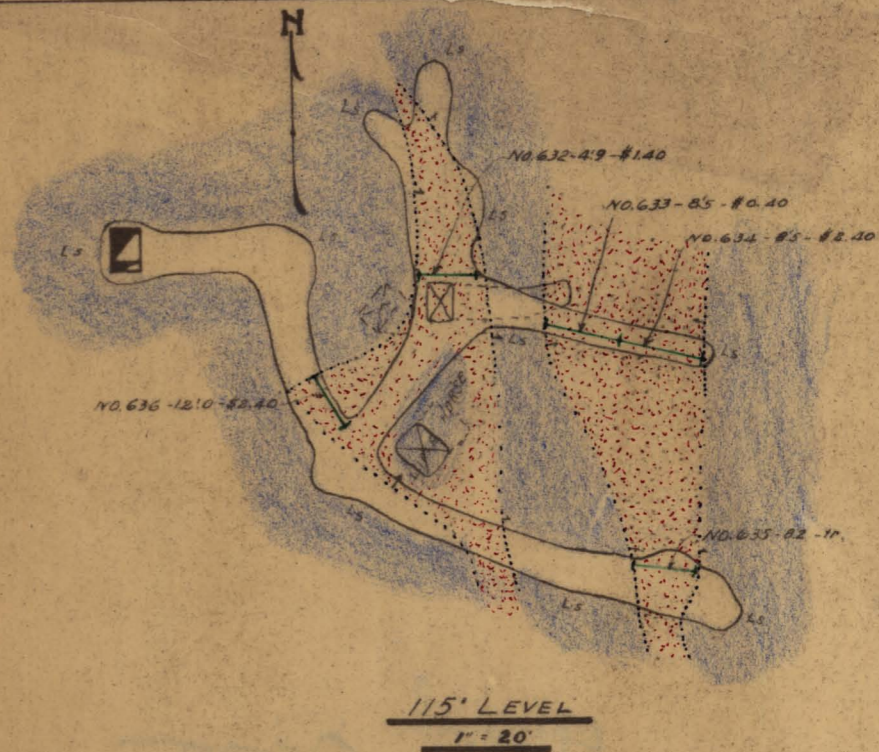
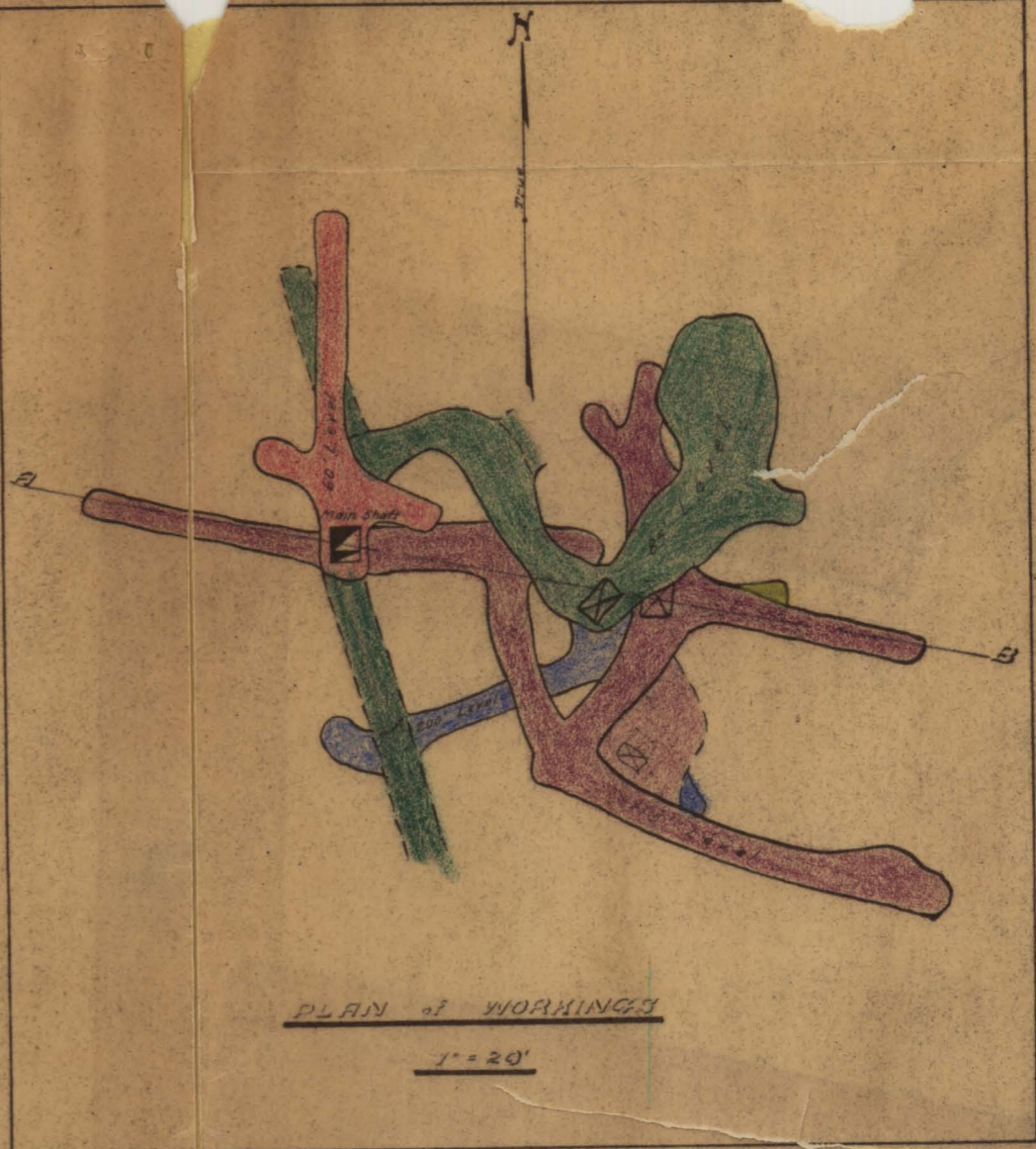
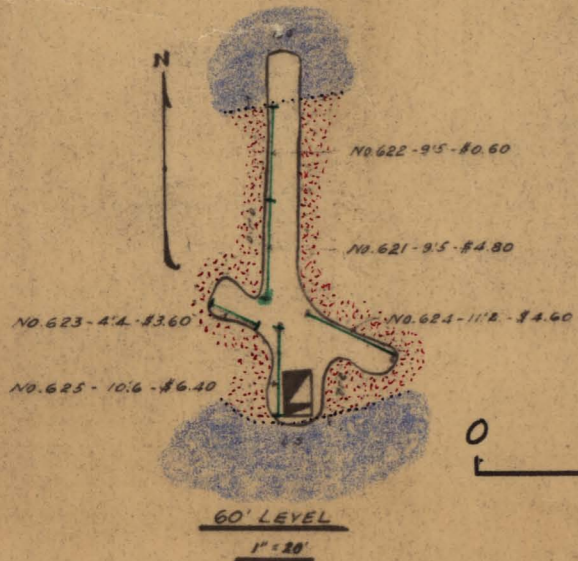
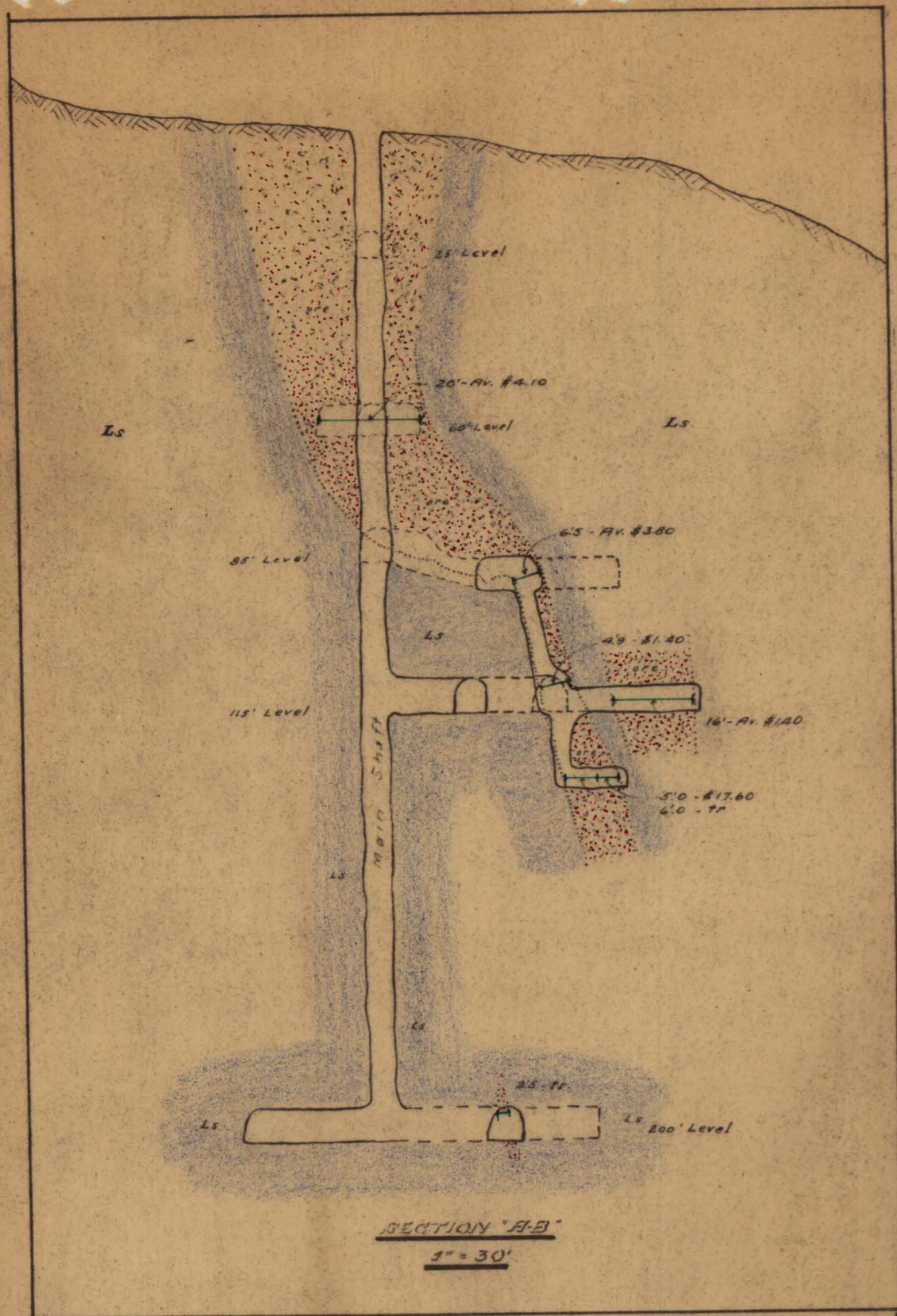
As a gold proposition the developed ore is too low-grade, and becomes poorer with depth. The indications of copper are so slight that they are not worth consideration.

At the entrance to copper tunnel there is a mineralized body about 25' wide which will average about .50% copper. This mineralized zone can be traced for but a short distance on the surface, and is probably a relatively small irregular mass. The tunnel cuts this mass at such a shallow depth that the samples taken have but little weight. This mineralization may be due to surface action entirely.

The properties are not recommended.

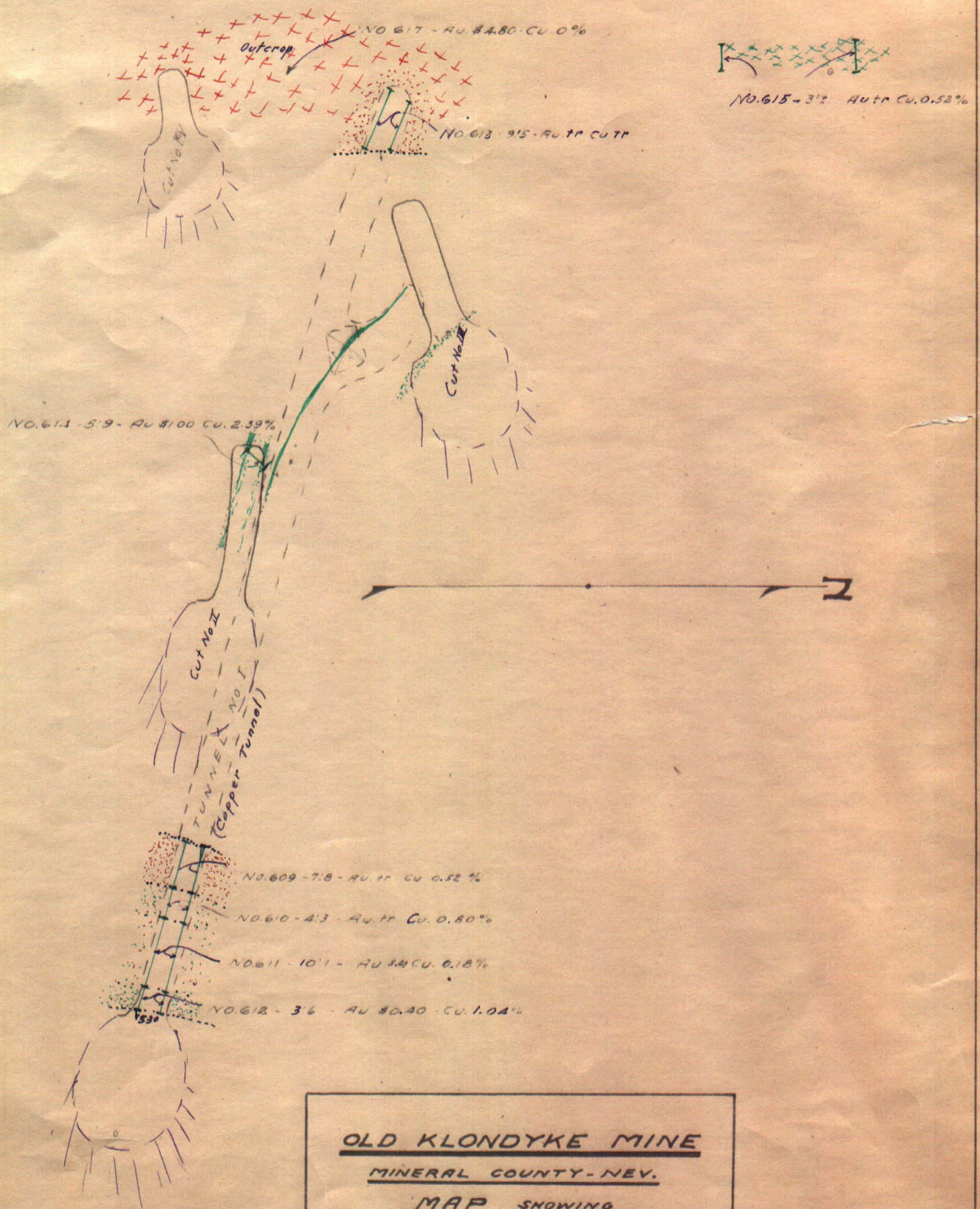
# LIST of ASSAYS

No.	Width	Gold	Assays Silver	Copper	TOTAL	LOCATION	
609	7.8	tr		0.52%	tr	Copper Tunnel - Sheet	-III-
610	4.3	tr		0.80%	tr	" " "	"
611	10.1	\$0.40		0.18%	\$0.40	" " "	"
612	3.6	\$0.40		1.04%	\$0.40	" " "	"
613	9.5	tr		tr	tr	" " Face	"
614	5.9	\$1.00		2.39%	\$1.00	Face Cut No.2	"
615	3.	tr		0.52	tr	Surface Cropping	"
616	---	\$1.20		0.00%	\$1.20	" " "	"
617	---	\$4.80		0.00%	\$4.80	" " "	"
618	4.0	\$0.80		2.86%	\$0.80	" " "	-I-
619	1.5	\$0.40		3.59%	\$0.40	" " "	-III
620	---	tr		0.00%	tr	" Gold Reef No.2	"
621	9.5	\$4.80			\$4.80	Main Shaft-60' Level	-II-
622	9.5	\$0.60			\$0.60	" " "	"
623	4.4	\$3.60			\$3.60	" " "	"
624	11.2	\$4.60			\$4.60	" " "	"
625	10.6	\$6.40			\$6.40	" " "	"
626	10.0	\$0.40			\$0.40	" " 85'	"
627	10.0	\$0.40			\$0.40	" " "	"
628	10.4	\$6.40			\$6.40	" " "	"
629	14.3	\$1.60			\$1.60	" " "	"
Composite -Nos.							
621-629	Incl.	\$3.20	\$0.00	0.00%	\$3.20	Composite	
630	7.5	\$1.60			\$1.60	Main Shaft-85' Level	-II-
631	6.5	\$3.80			\$3.80	" " "	"
632	4.9	\$1.40			\$1.40	" " 115'	"
633	8.5	\$0.40			\$0.40	" " "	"
634	8.5	\$2.40			\$2.40	" " "	"
635	8.2	tr			tr	" " "	"
636	12.0	\$2.40			\$2.40	" " "	"
637	5.0	\$17.60			\$17.60	" " 130' Section	"
637	Check	\$18.00	\$0.75		\$18.75	" " "	"
638	6.0	tr			tr	" " "	"
639	2.5	tr			tr	" " 200'	"
640		\$3.20		0tr	\$3.20	Dump - Main Shaft	
641	9.0	\$1.60		0.00%	\$1.60	Surface-Thrush Claim -	-I-
642	8.0	\$1.60		0.00%	\$1.60	" " "	"
643	6.0	\$4.00		0.00%	\$4.00	" " "	"
644	5.5	\$1.80		0.00%	\$1.80	" Commodore	"
647	7.5	\$0.40		0.00	\$0.40	" Gold Reef	"
648	7.2	tr		tr	tr	" Ge Best	"
649	1.5	\$0.40		tr	\$0.40	" " "	"
650	7.0	\$1.80		0.00%	\$1.80	" " "	"
651	3.5	tr		tr	tr	" Home	"
652	4.0	\$0.40		tr	\$0.40	" " "	"



# **OLD KLONDYKE MINE** MINERAL COUNTY - NEVADA

**MAP SHOWING**  
VERTICAL SECTION THROUGH  
MAIN SHAFT - PLAN of WORKINGS  
LEVEL MAPS AND SAMPLING  
RESULTS.



0 10 20 ft.

**OLD KLONDYKE MINE**  
**MINERAL COUNTY - NEV.**

**MAP SHOWING**  
**SAMPLING RESULTS at**  
**COPPER TUNNEL AND VICINITY**

**SCALE: 1" = 20' - NOV. 1914.**