

4160 0008

Washoe Co. - general

NW-21-6

?

Item 50
(15 of 18)

Mining District: ADOBE SPRING AREA
(Mineral Commodities Unknown)

T. 26 N., R. 20 E.
Washoe County, Nevada
USGS Astor Pass 7.5-min. quadrangle (1964)

GENERAL BACKGROUND

The Adobe Spring area is located in sections 7, 8, 17, and 18, T. 26 N., R. 20 E. The USGS quadrangle sheet referenced above shows several prospects in this area. The location was not examined by the writers, and the mineral commodities present, if any, are not known.

GEOLOGICAL AND TECHNICAL DATA

Bonham's (1) geologic map indicates that these prospects are located in volcanic rocks of the Pyramid Sequence.

POTENTIAL FOR DEVELOPMENT

Unknown.

COMPANIES AND CLAIMANTS ACTIVE IN AREA

1. B & G Group
B. Bartles, et.al.
Star Rt., Box 215
Gardnerville
Apr. 1972

SELECTED REFERENCES

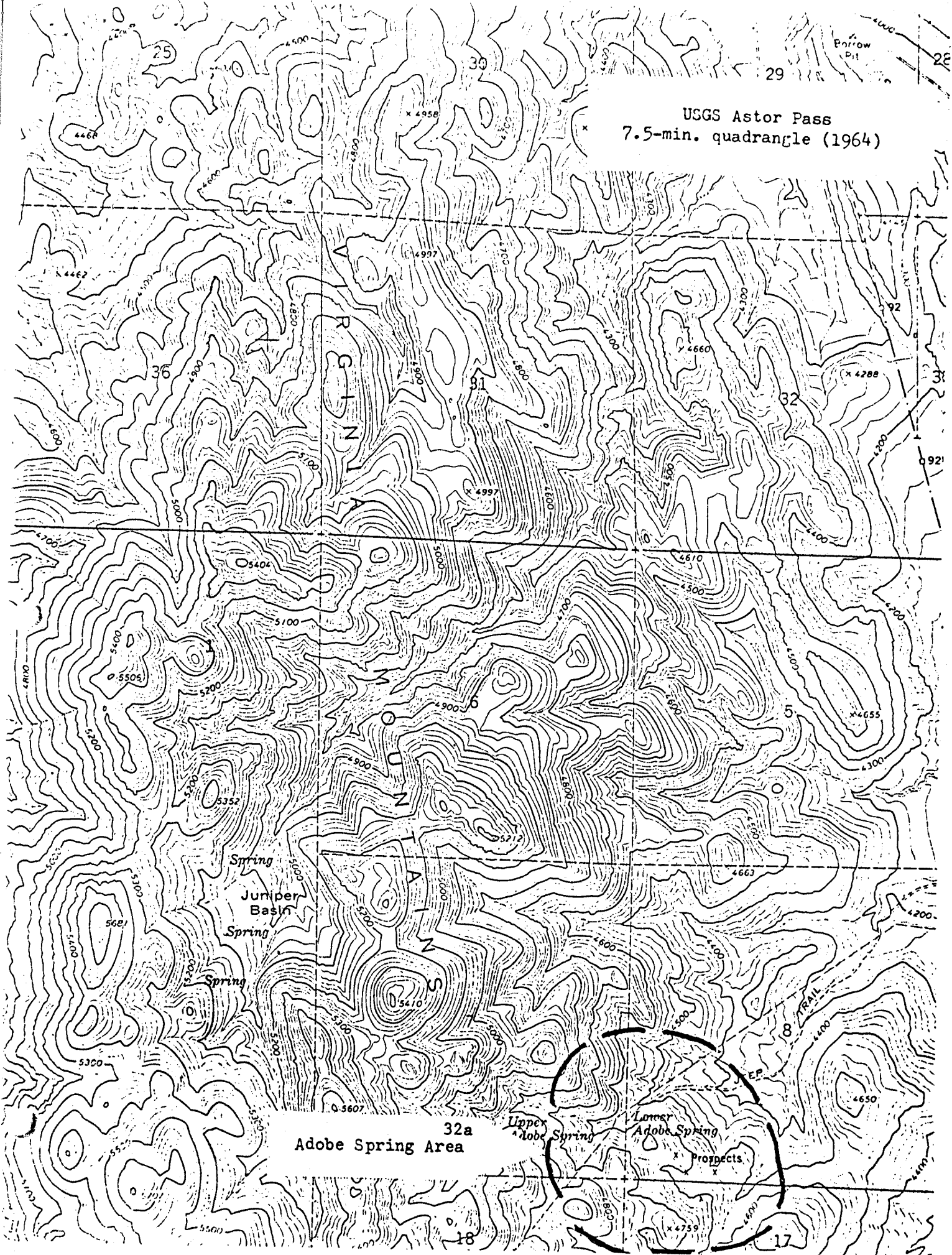
1. Bonham and Papke: Geology and Mineral Resources of Washoe and Storey Counties, Nevada; Nev. Bur. Mines Bull. 70, 1969.
(Includes Geologic Map of Resource Area)

FIELD EXAMINATION

Not examined.

Bennett, Jan. 1973

USGS Astor Pass
7.5-min. quadrangle (1964)



Washoe Co. - general

Item ~~88~~

89

Mineral Resources Inventory and Analysis
of the
Pyramid Resource Area

Carson City District
Nevada and California

by

R. E. Bennett and H. W. Mallery

1973

*see Washoe County-general
file for the complete
introduction to this report
(0160 0035)*