

DISTRICT	Rosebud
DIST_NO	4010
COUNTY	Pershing
If different from written on document	
TITLE	Rosebud Dozer Valley IP inversion model
If not obvious	from 200' DP-DP data, line 26 chargeability
AUTHOR	
DATE OF DOC(S)	1999
MULTI_DIST Y / N?	
Additional Dist Nos:	
QUAD_NAME	Sulphur 7 $\frac{1}{2}$ '
P_M_C_NAME	Rosebud Mine; LAC Minerals U.S.A. Inc.
(mine, claim & company names)	Newmont Gold Co.
COMMODITY	gold, silver
If not obvious	
NOTES	Chargeability inversion model contour map, geophysics
	1 map
	Box 60

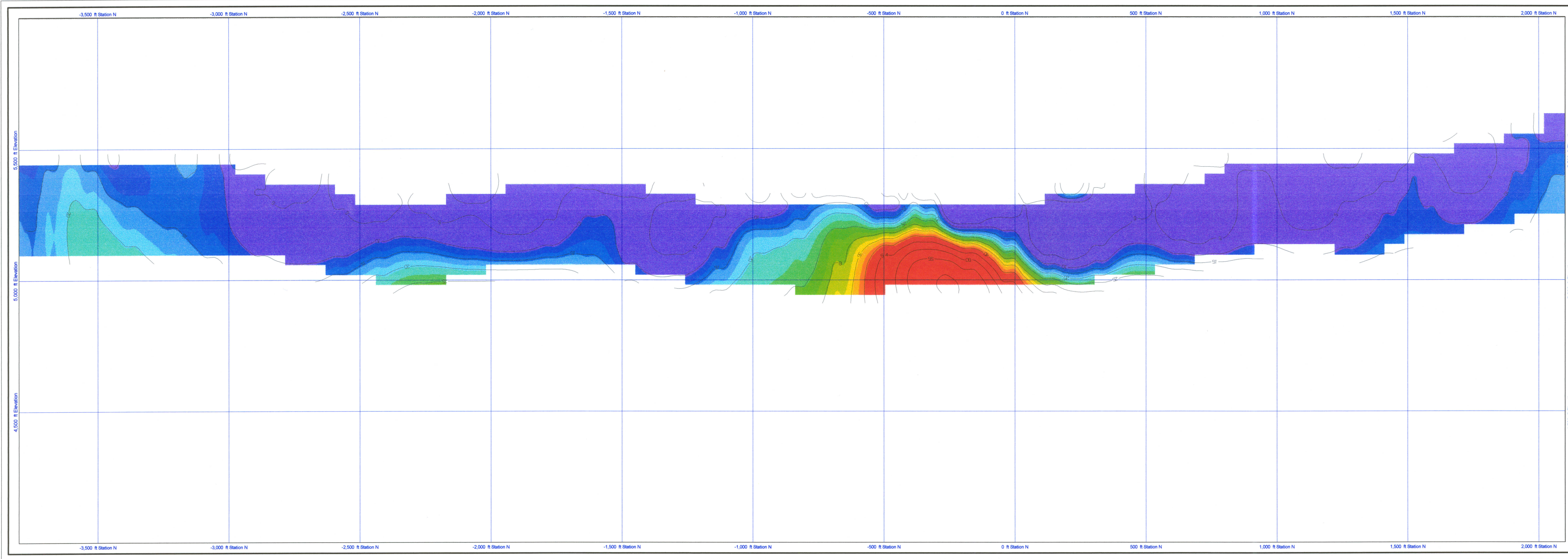
Keep docs at about 250 pages if no oversized maps attached  
(for every 1 oversized page (>11x17) with text reduce  
the amount of pages by ~25)

SS: DP 9/22/08  
Initials Date

DB: Initials Date

SCANNED: Initials Date





ROSEBUD.

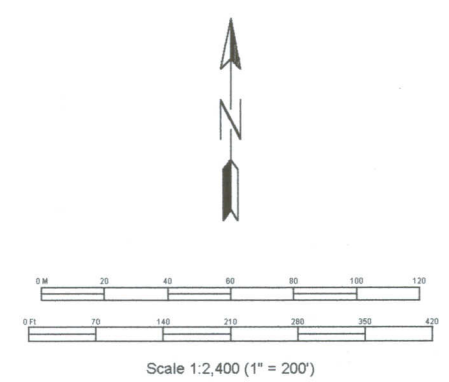
EXPLANATION

Chargeability Inversion Model  
(msec)  
From 200 ft Dipole-Dipole IP data  
collected by LAC Minerals, 1988-89.  
50ft cell size.  
2.5 surface - cell aspect ratio.  
Resistivity model used as starting model.  
Error: 5% at n=1  
10% at n=5  
Noise = 0.14 msec  
Topography included model.  
Chi factor = 0.1  
# Iterations = 16  
Coloration = 10 - 40 msec  
Contour Interval = 5 msec

L26c

Image file: 26cgood.bmp  
Original image resolution (DPI X,Y): 75, 75  
Original image size (Pixels X,Y): 3629, 1230  
Original image size (Inches X,Y): 48.00, 16.00

MAP AREA:  
X: -3,000 - 2,100  
Y: 4,000 - 6,000  
Z: 0 - 0  
Units are feet.



	<b>Newmont Gold Company</b>
	<b>ROSEBUD</b>
	Dozer Valley IP Inversion Model from 200' DP-DP Data
	Line 26 Chargeability

NEWMONT GOLD COMPANY PROPRIETARY INFORMATION  
H:\dipmod\IP-Res Deposit Model.dtm  
Stones 4.0 BETA 2  
Sunday, April 16, 1999 10:14:26

60602128

4610

Box 50