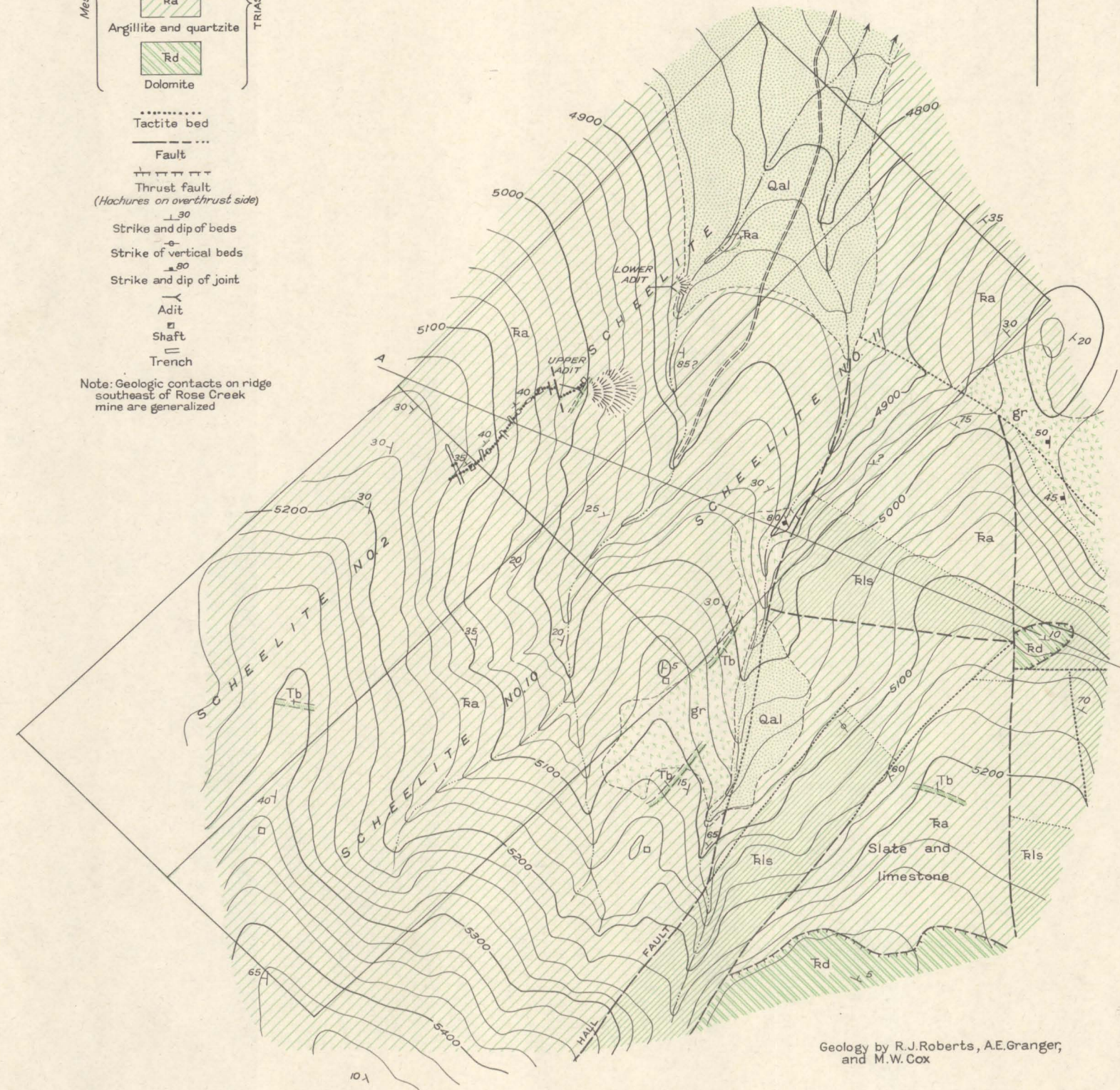


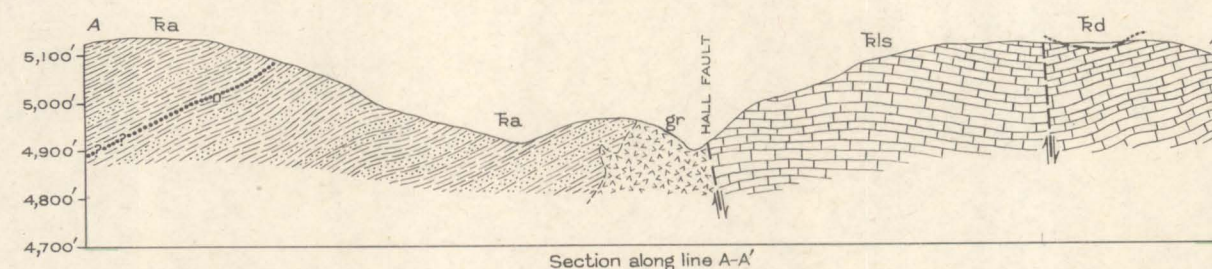
R.37E.
Sec. 31 32
Sec. 6 5

HUMBOLDT CO T.35N.
PERSHING CO T.34N.

- EXPLANATION
- Qal Alluvium
- Tb Basic dike
- gr Granite
- Rls Limestone
- Ra Argillite and quartzite
- Rd Dolomite
- Tactite bed
- Fault
- Thrust fault (Hachures on overthrust side)
- Strike and dip of beds
- Strike of vertical beds
- Strike and dip of joint
- Adit
- Shaft
- Trench
- Note: Geologic contacts on ridge southeast of Rose Creek mine are generalized



Geology by R.J. Roberts, A.E. Granger, and M.W. Cox



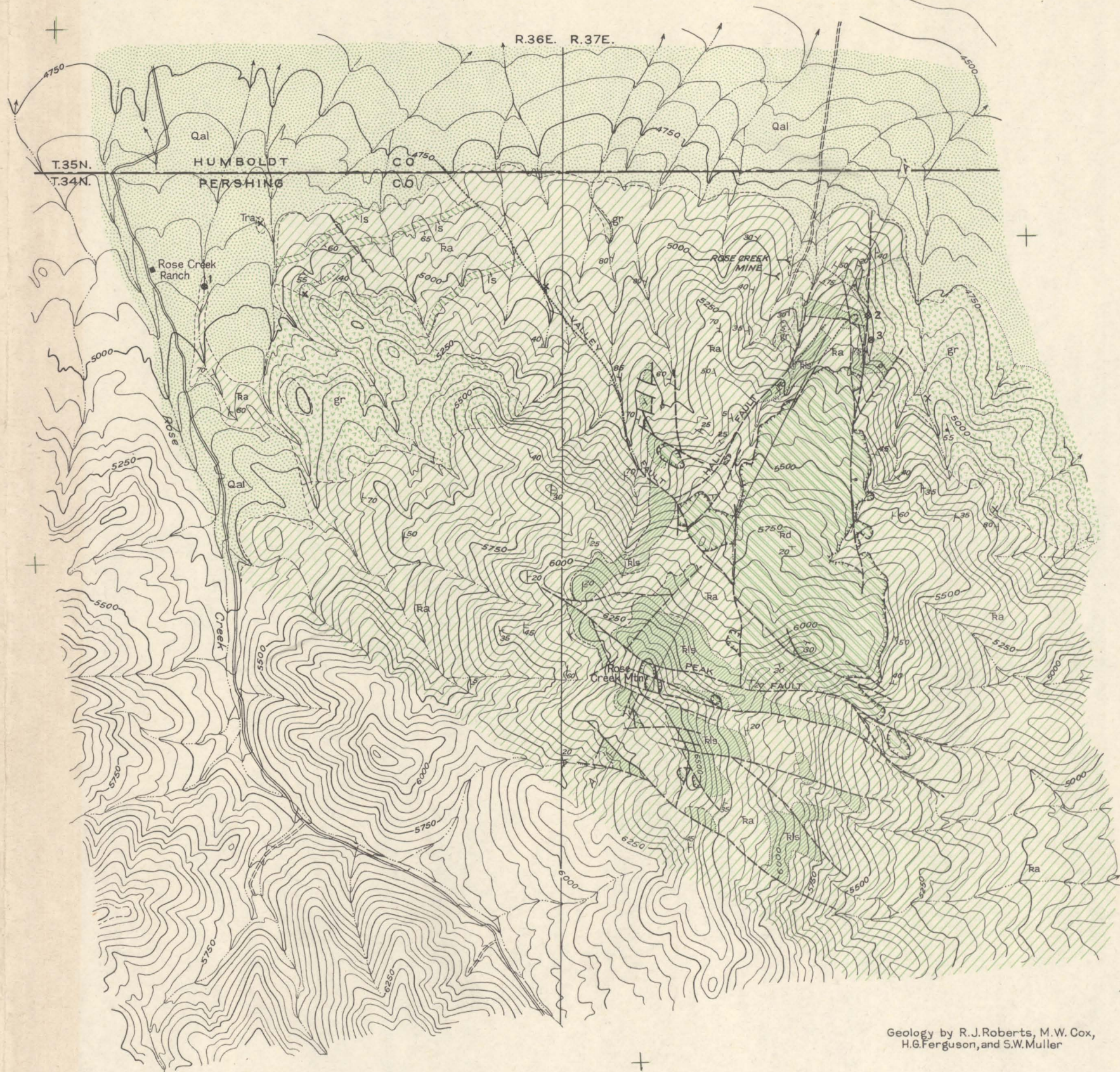
GEOLOGIC MAP AND SECTION OF THE ROSE CREEK MINE AND VICINITY, PERSHING COUNTY, NEVADA

250 0 1,000 Feet
Contour interval 25 feet, datum is mean sea level

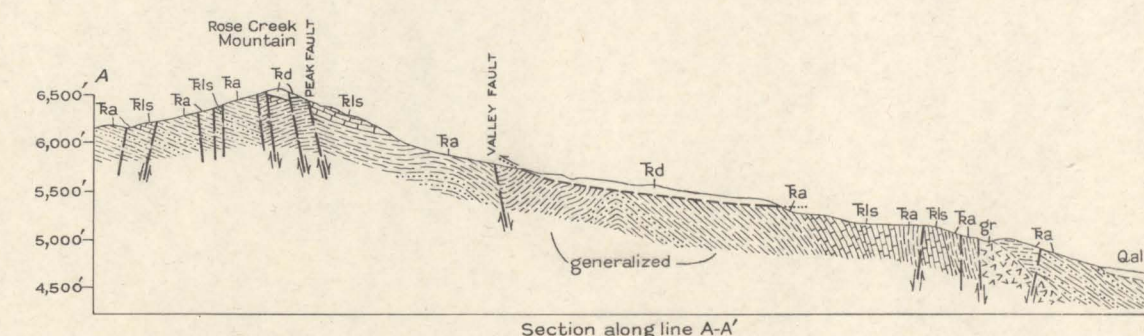
1st Proof

MAY 22 1943

R.36E. R.37E.



Geology by R.J. Roberts, M.W. Cox, H.G. Ferguson, and S.W. Muller



GEOLOGIC MAP AND SECTION OF THE ROSE CREEK AREA, PERSHING COUNTY, NEVADA

1,000 0 5,000 Feet
Contour interval 50 feet, datum is mean sea level

1st Proof

MAY 22 1943