

3950 0210

WEST LIBERTY GOLD DEPOSIT

The West Liberty deposit is one of several gold deposits discovered thus far at the Robinson Mining District. The district is located south of U.S. Highway 50, due west of Ely in White Pine County, Nevada. The deposit is situated west of the Liberty Pit in section 16, T16N R62E. The Robinson District is historically well known for its copper production; the property is currently leased from the Kennecott Copper Company and is part of the Alta Bay Joint Venture.

GEOLOGY AND ORE CONTROL

The West Liberty gold deposit occurs on the contact between Cretaceous quartz monzonite and Permian Rib Hill Sandstone. The contact zone is irregular with abundant dikes and sills penetrating and mixing with the overlying Rib Hill Sandstone. Strong argillic alteration is pervasive throughout the West Liberty area, and intense silicification is common. The altered monzonite intrusion consists of a matrix of quartz and sericite cut by a closely spaced network of quartz, quartz-pyrite, and pyrite veins. The base of oxidation at West Liberty occurs well within the intrusive body. Oxidized quartz monzonite porphyry is commonly 100 feet thick or more. The gold ore is hosted primarily by siliceous gossan which formed from the metasomatic replacement of sandstone under oxidizing conditions. Gold is also present within the quartz monzonite porphyry and in silicified Rib Hill Sandstone.

GOLD RESERVES AND POTENTIAL FOR EXPANSION

The current geologic reserves for West Liberty stand at 4.9 million tons averaging .019 oz. Au/ton, which is approximately 93,000 ounces of gold. The limits of this deposit are still being evaluated and potential for expansion to the west is considered favorable. Exploration drilling is ongoing at this time and is scheduled to be completed during the summer of 1989.

Marty Houhoulis
Geologist
Robinson Project

GEO17



Ely, Nevada
ROBINSON PROJECT
WEST LIBERTY PLAN MAP

SCALE

LEGEND

Prh - PERMIAN RIB HILL SANDSTONE
Tv - TERTIARY RHYOLITE

AREA COVERED BY WASTE DUMP

ROAD

• .03 OZ Au/TON ORE

WASTE DUMP

LIBERTY
OPEN PIT

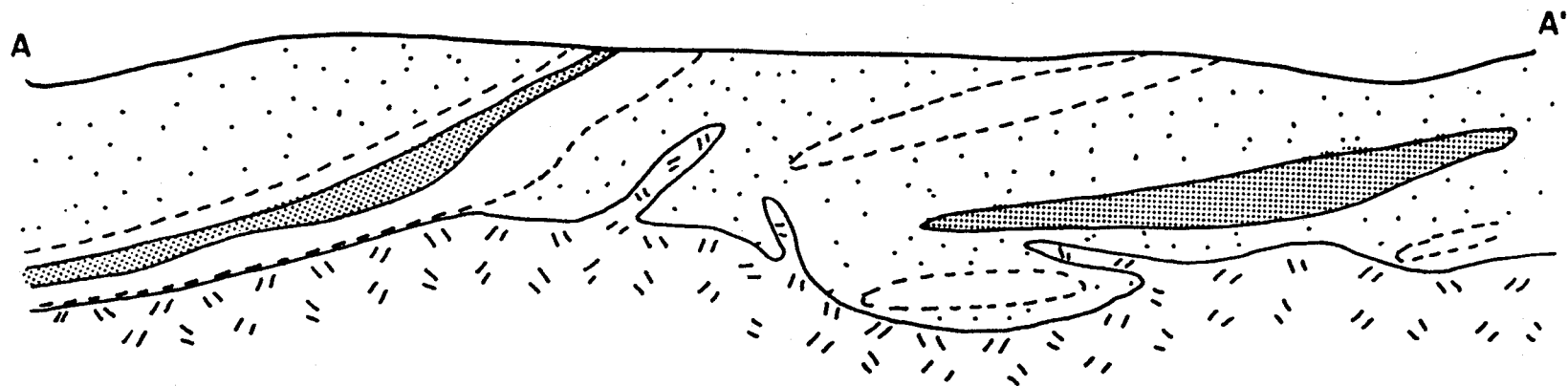
Prh

Tv

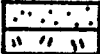



WHITE HILL

ORE ZONES ARE DASHED WHERE INFERRED.

LOOKING NORTH



LEGEND

- | | |
|--|---------------------------|
|  | PERMAN RIB HILL SANDSTONE |
|  | QUARTZ MONZONITE PORPHYRY |
|  | >.030 OZ Au/TON ORE |
|  | .014 - .029 OZ Au/TON ORE |



ALTA GOLD Co.

Ely, Nevada
ROBINSON PROJECT
WEST LIBERTY CRSS SECTION
LOOKING NORTH

SCALE



FEET