

3530 0015

244
ITEM
16

Butler Mine

WILL, R37E, about 32 mi.
N of Mine

Au Ag

Nye County

(Nevada)

PLATORO CORPORATION
SUITE 1
4344 E. INDIAN SCHOOL RD.
PHOENIX, ARIZONA

SEEN
J.H.W.
SEP 2 1921
REC'D

REPORT ON
PARADISE-NEVADA MINES CO
NYE COUNTY
NEVADA.

(*Paradise Mines*)

Examined August 4, 1921
Reported August 15, 1921.

REPORT ON PARADISE NEVADA MINE. NYE COUNTY. NEVADA.

OWNERSHIP AND HOLDINGS.

The property consists of six unpatented claims and is owned by Mr. W. Butler, Mina Nevada. It is situated in TW 11 R 37 E and lies about 32 miles north of Mina, the nearest railroad point. The road between Mina and the mine is good.

Geology.

The predominant rock of the district is an andesite. Thru this andesite a rhyolite dike about 40 feet wide striking in an easterly and westerly direction has been intruded. On each side of this rhyolite a vein has been formed, the north vein on which the shaft has been sunk having an andesite footwall and a rhyolite hanging wall and the south vein a rhyolite footwall and an andesite hanging wall. Other than sinking the shaft on the north vein no other development on this vein is in evidence. On the south vein considerable drifting on the 150 level and the 217 foot level and has shown a small oreshoot about 15 feet long and 4 feet wide, and of medium grade. A strong fault encountered in crosscutting on the 150 level has given the vein a horizontal displacement of about 20 feet. The drift on the 217 level was caved going west and it is very likely that it was at this point that the fault was cut on this level.

On the 217 level the vein was drifted on for approximately 150 feet to the east of the ore shoot and showed the vein to narrow to about 10 inches and containing no values.

The ore shoot on the 150 level on the west side of the fault and the one on the 217 level on the east side of the fault are in all probability the same.

About 15 feet below the 217 level water stands in the shaft. It is the shaft is 290 feet deep and that cross-cutting has been done in to the south vein. The flow of water is said to be about 12 galls minute.

EQUIPMENT.

15 H.P Gasoline hoist in apparently good condition.

Small plunger rod type pump in shaft and small gasoline engine to drive same. Pump is inadequate to handle flow of water.

Buildings consist of Hoist house, blacksmith shop, and two cabins.

Metallurgy.

Ore is oxidized above the water level and is readily amenable to cyanide treatment.

WOOD, WATER and POWER.

Wood for domestic purposes is about one mile away. Water for domestic purposes can be obtained from a spring on the property, and for mining purposes from the shaft. The Nevada California Power line will soon be at the Simon Lead Property about 10 miles to the south.

PRICES and TERMS.

J.A. Burgess has option on property for \$60000 payable in 4 equal installments in 6, 12, 18, and 24 months. His commission is 10% in addition to the purchase price and is to be paid by the buyer.

POSSIBILITIES.

Unless other ore shoots are found or the one so far found increases in size and value with depth the property as a mine is of little value. The grade of ore in sight makes it imperative that a mill be on the property but a considerable larger tonnage must be developed before such an undertaking can be contemplated.

MISCELLANEOUS.

The property has been leased for the past year during which time the work below the 217 level was done. No record of this work is available so that it is impossible to judge what the lower level showed.

CONCLUSIONS.

on the 217 level
The west drift should be cleaned out so that the vein might be observed at this point. The shaft should be dewatered and the lower level examined. This work should be done by the parties holding the option. Under present conditions property not recommended.

Date 8/4/21

Report for T.M.Co. By

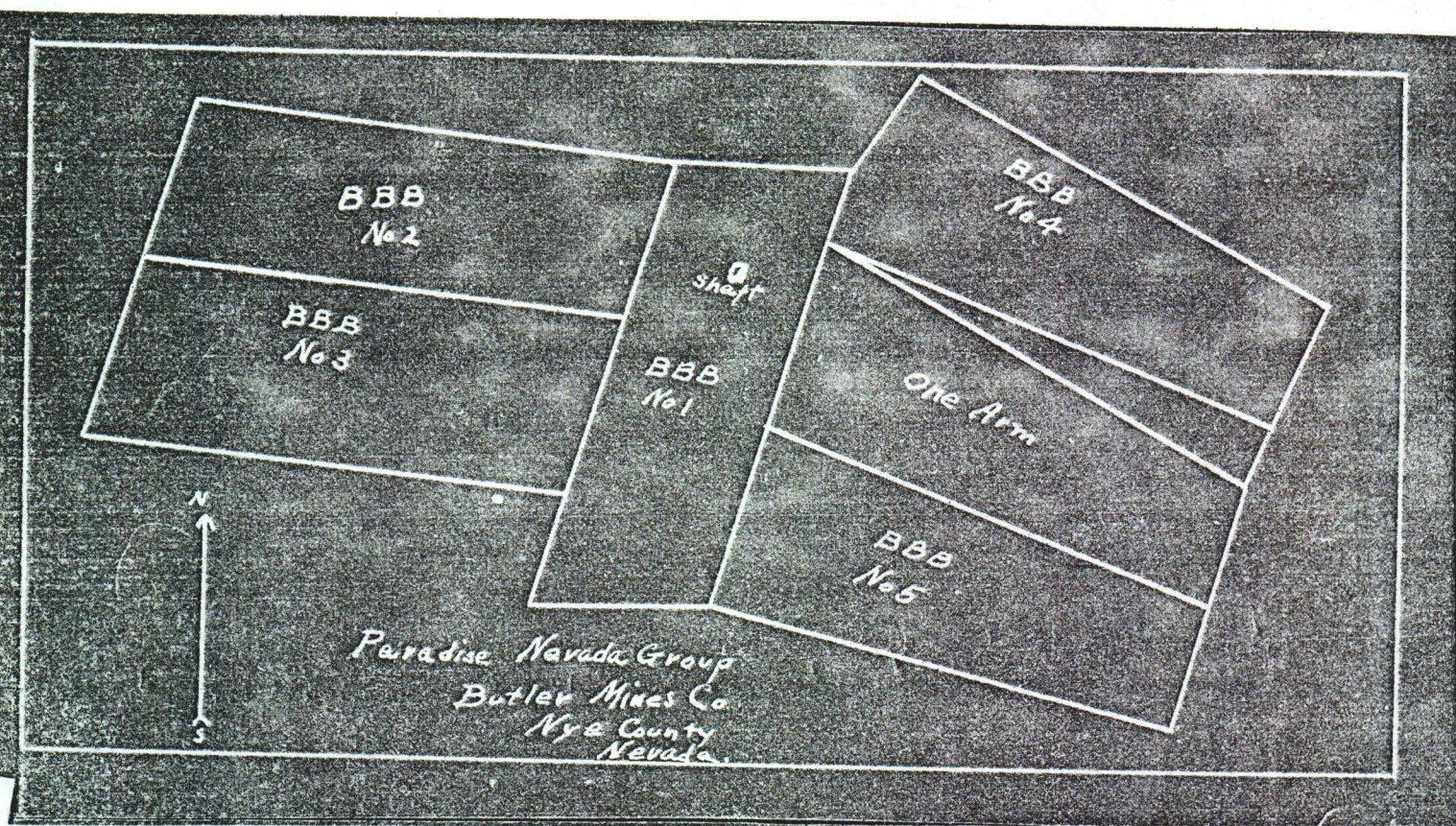
H.G. Johnson

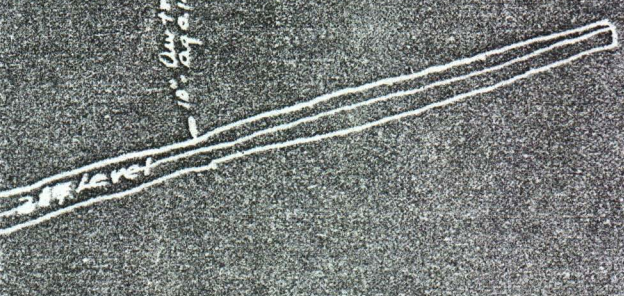
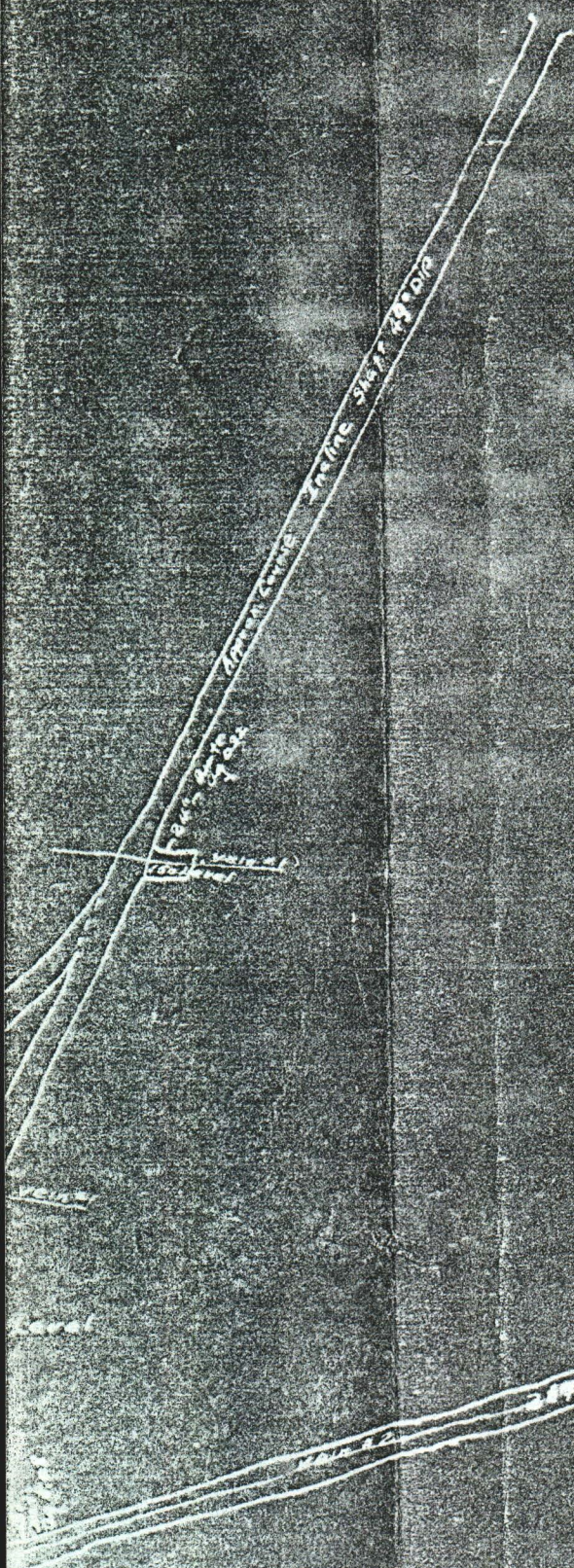
ASSAYS FROM BUTLER MINE.

150 LEVEL

Drift. on South Vein.

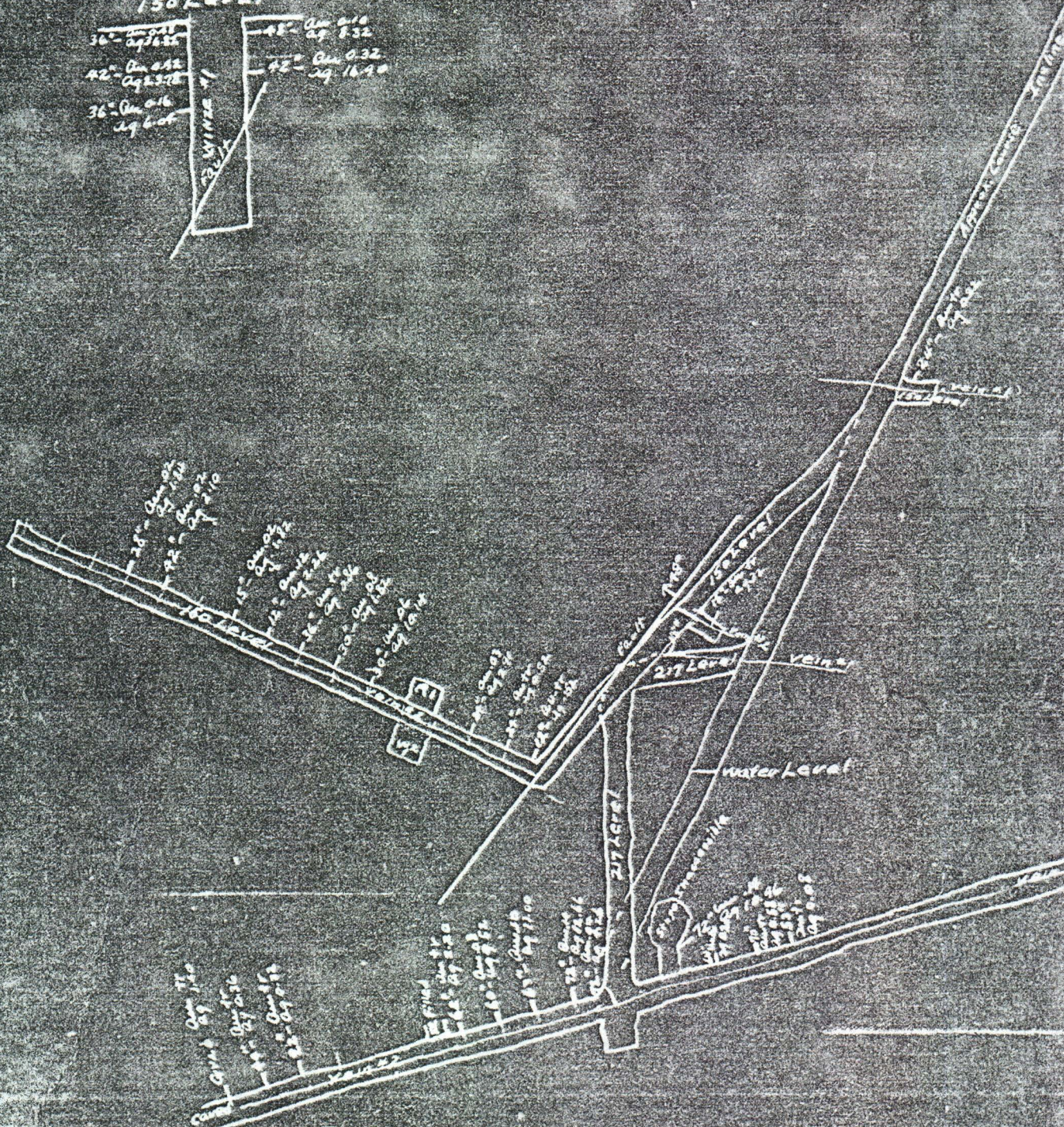
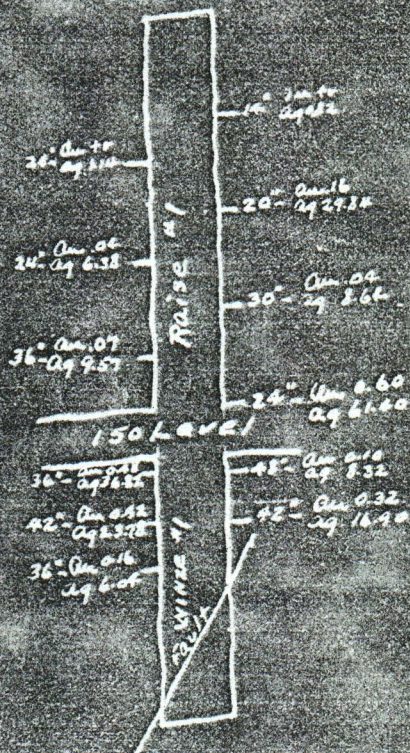
Width inches	Au ozs	Ag ozs	Description
12	tr	.36	82 XC West of Fault
24	tr	.52	5 feet West of XC
24	.03	2.91	10 " " " "
30	.06	10.14	25 " " " "
30	.08	1.82	30 " " " "
36	tr	.86	35 " " " "
12	.12	2.26	40 " " " "
15	.02	1.82	45 " " " "
42	.02	2.10	55 " " " "
28	.02	1.84	60 " " " "
24	.60	61.40	5 feet up E side Raise
36	.07	9.57	10 " " W " "
30	.04	8.64	15 " " E " "
24	.04	6.38	20 " " W " "
20	.16	29.84	25 " " E " "
24	tr	1.14	30 " " W " "
14	tr	.82	35 " " E " "
48	.10	8.30	3 feet down E side Winze
42	.32	16.90	8 " " E " "
36	.48	36.82	3 " " W " "
42	.42	23.78	8 " " W " "
36	.16	6.04	13 " " W " "
24	tr	2.70	28 " " W " "Bottom
15	tr	.32	Drift East of Fault
24	tr	.32	North Vein.
<u>250 Level</u>			At Crosscut South Vein.
72	.04	4.26	5 feet west of XC
72	.14	12.66	10 " " " "
63	.10	11.00	15 " " " "
60	.08	9.52	20 " " " "
62	tr	2.20	40 " " " "
22	tr	.32	45 " " " "
44	tr	.36	50 " " " "
Grab Cave Material	tr	1.40	5 " East " "
72	.14	10.96	10 " " " "
64	tr	.20	15 " " " "
70	tr	.58	20 " " " "
53	tr	.08	100" " " "
10	tr	.14	





Butler Mine
Nye County
Nevada

8/10/21



BUTLER MINE

Valcelda Min.Co.

at Goldike, 35 mi. E
of Mina

Au Ag

Nye County

(Nevada)

PLATERO CORPORATION
SUITE 1
444 E. INDIAN SCHOOL RD.
PHOENIX, ARIZONA

PRELIMINARY REPORT ON BUTLER MINE.

Presented by - F. W. Ball, 345 Clay Street, Los Angeles, California.

NAME AND OWNER

Butler Mine, owned by Valcalda Mining Co., Inc.

LOCATION AND HOLDINGS

The property is located at Goldike, Nevada, 35 miles easterly from Mina, Nevada.

GEOLOGY

A rhyolite dike intruded through flow andesite forms the walls of two veins that appear on the contacts. The veins strike east-west and dip about 45 deg. to the south.

VEINS AND ORE BODIES

The only ore developed is on the south contact vein, and consists of small spots of fairly good gold ore. The width of the vein varies from a few inches to as much as 7 feet, but the ore is very small and spotty.

A shipment of 7-1/2 tons recently sent out ran .47 oz. gold and 22 ozs. silver.

SAMPLING AND ASSAYS

NO.	WIDTH	OZ. GOLD	OZ. SILVER	VALUE	LOCATION
1	2.5 ft.	.38	35.82	\$40.88	Remaining spot in stope 200 Level
2	2.0 ft.	.16	9.44	12.87	At point end stope 20 ft. from #1
3	7.0 ft.	.02	2.38	2.53	Grab cave where vein 7 ft.

The last sample was supposed to run \$16.00.

DEVELOPMENT

One 287 ft. incline shaft on north contact vein, and connected at various levels 100 - 200 - 287 to south contact vein.

There have been 500 feet or more of drifting on the levels.

PRESENT EQUIPMENT

Small gas hoist.

METALLURGY

Cyanide.

WOOD, WATER AND POWER

No wood, water or power.

PRICE AND TERMS

\$81,000.00 for control.

POSSIBILITIES

Very small.

CONCLUSIONS

Not interested.

Dated- May 22, 1937. For- The Tonopah Mining Co. of Nevada. By- Wm. Sharp.

Typed- May 22, 1937.