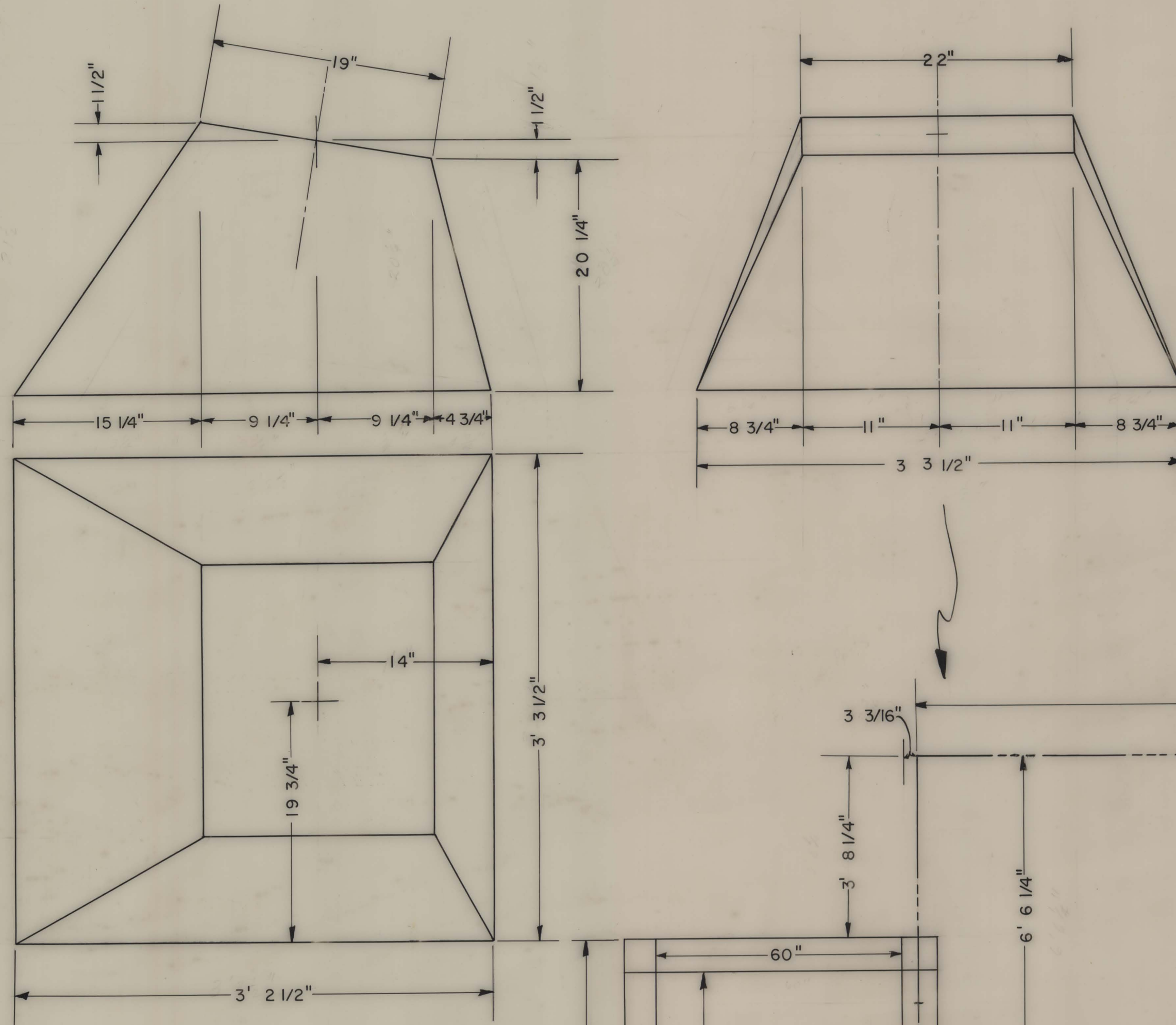
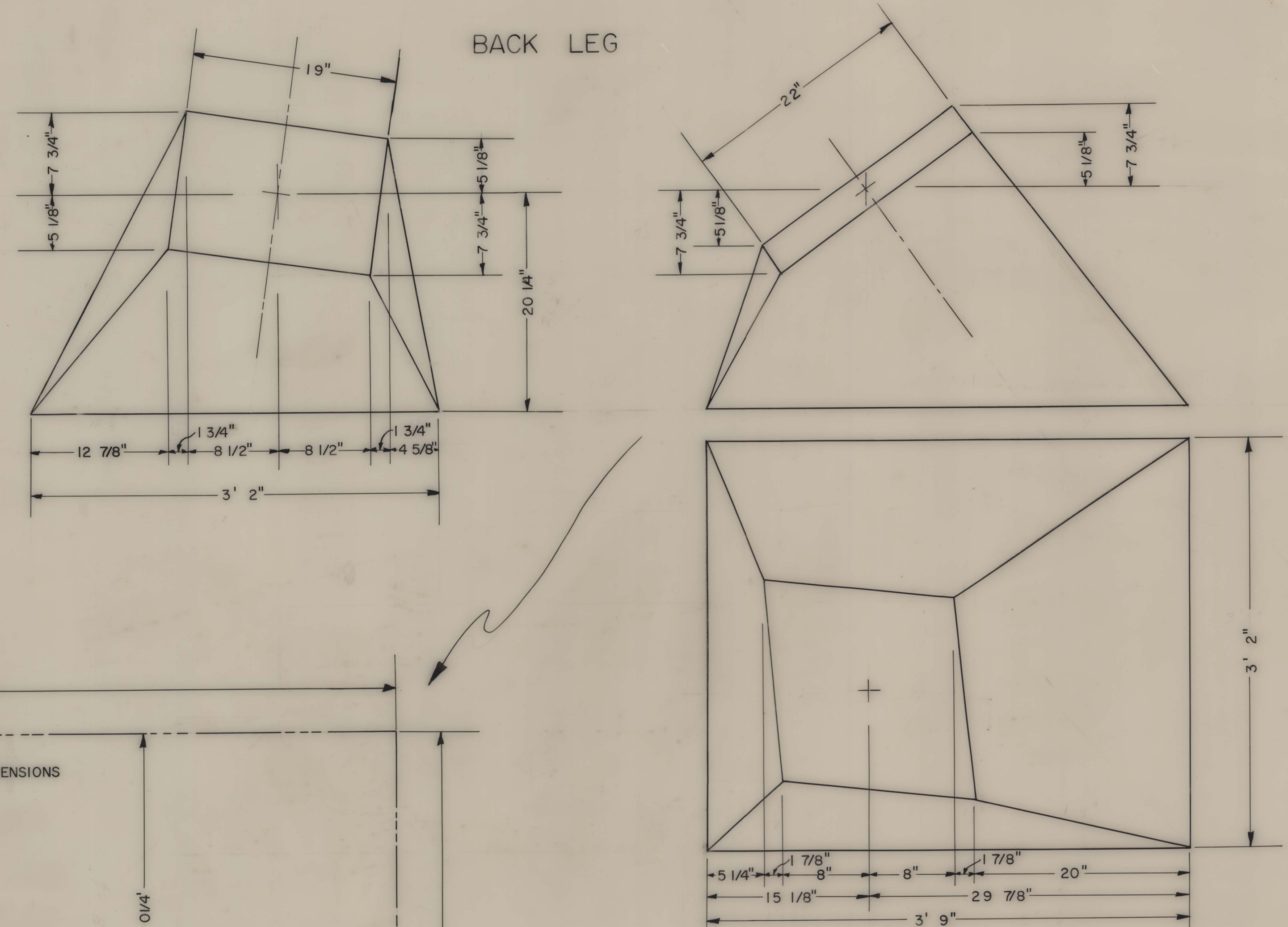


— FOOTINGS —

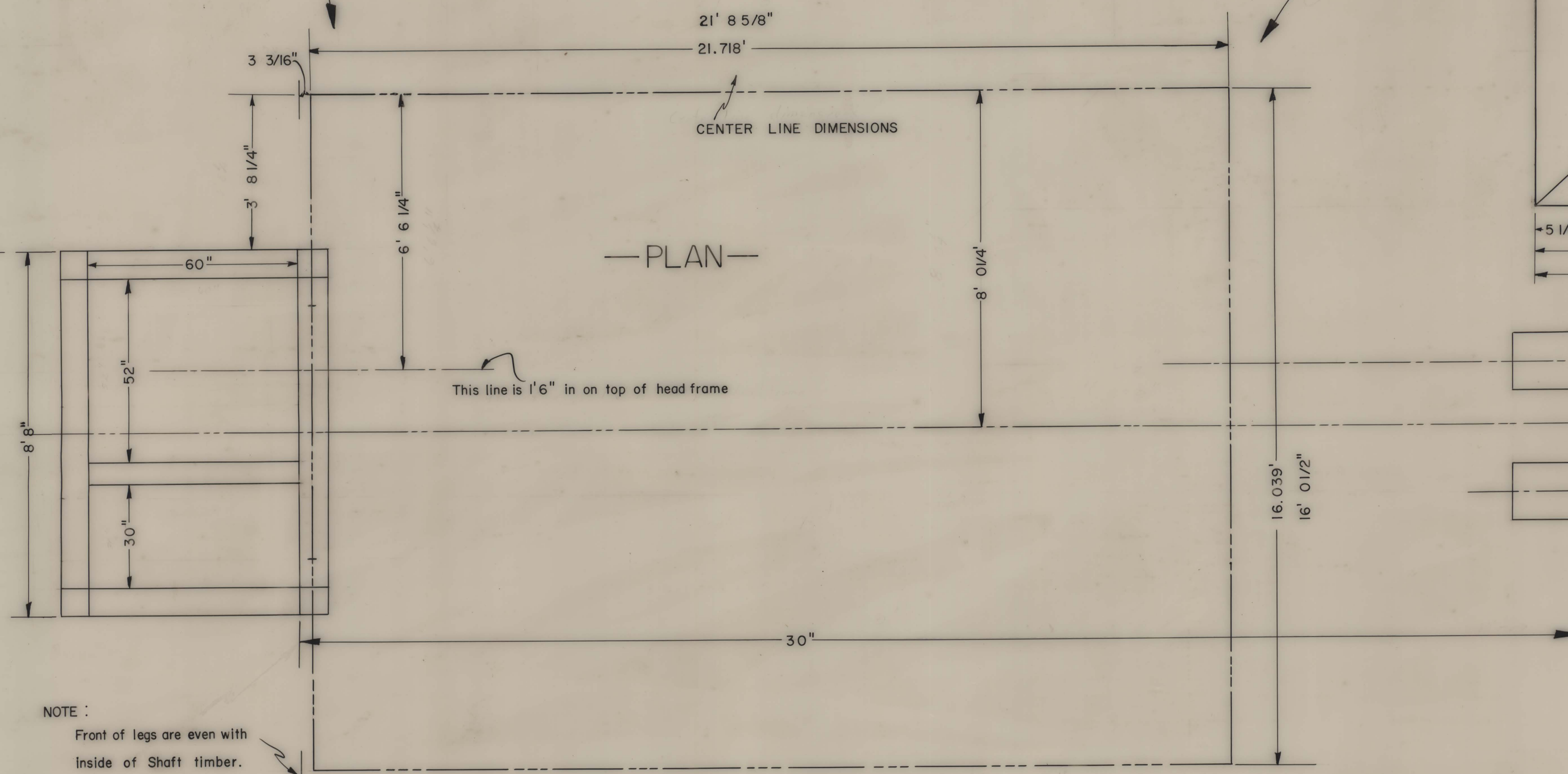
FRONT LEG



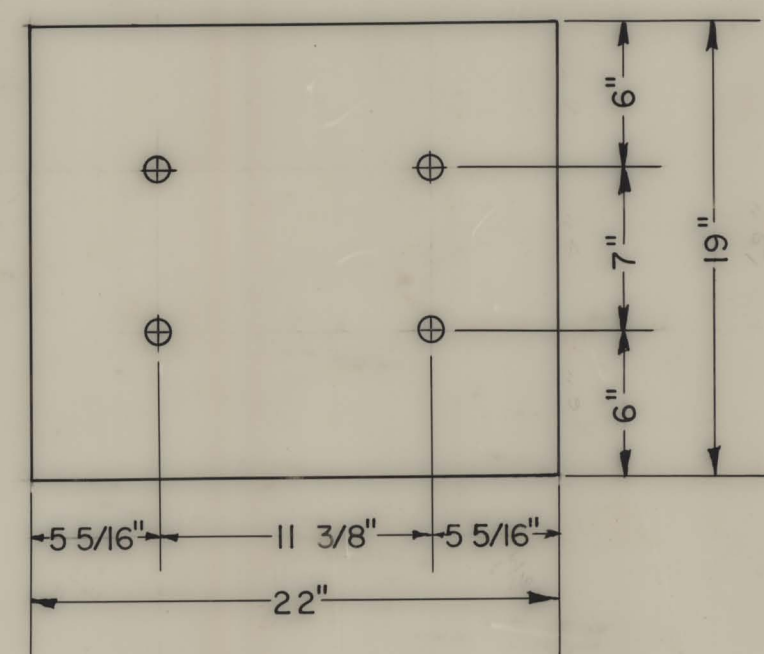
BACK LEG



— PLAN —

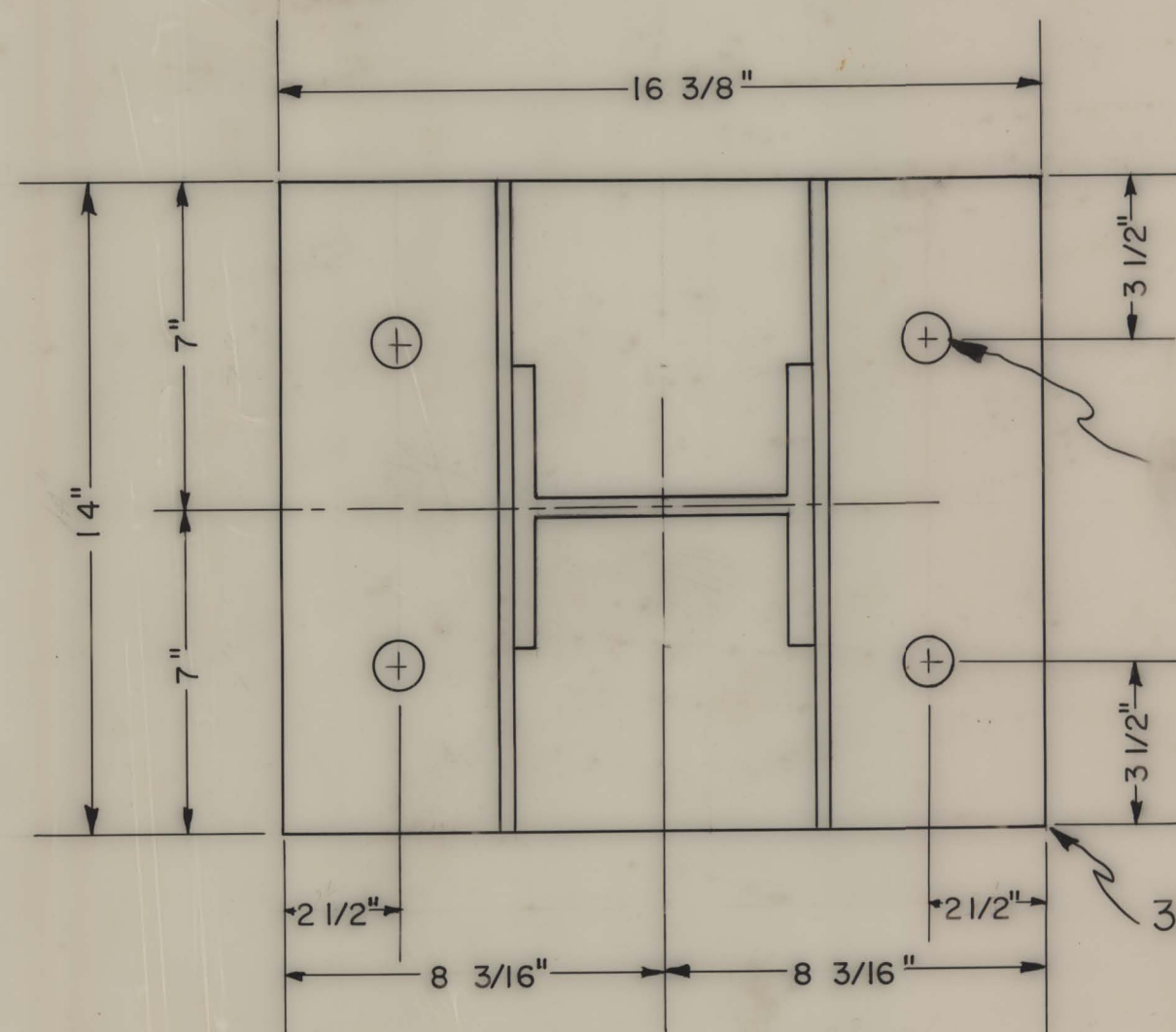


Looking into the plane of the top of the footing, the 1" bolts are placed as shown. All have anchor plates. Bolts stick 4" above footing face.

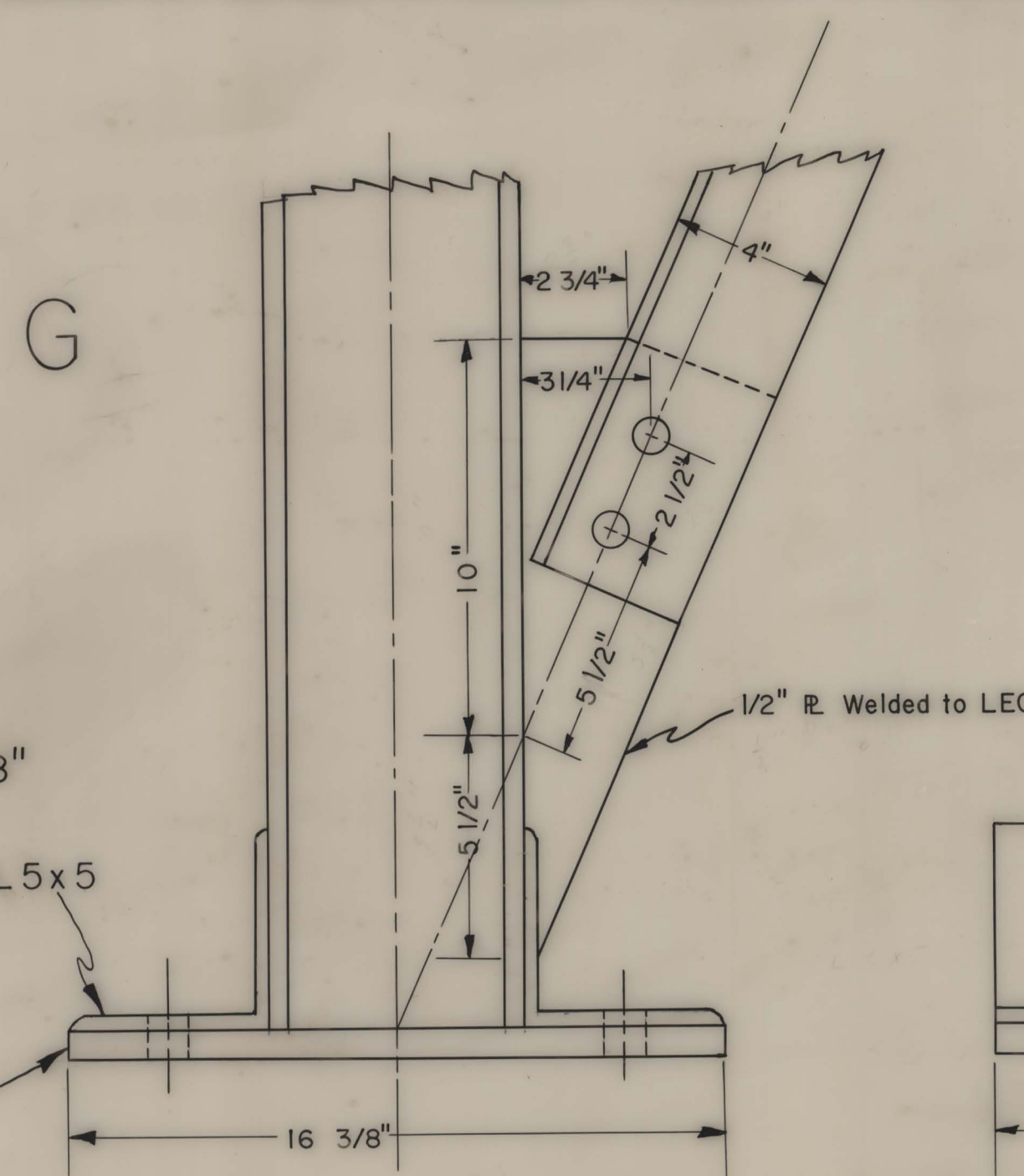


NOTE :
Front of legs are even with
inside of shaft timber.

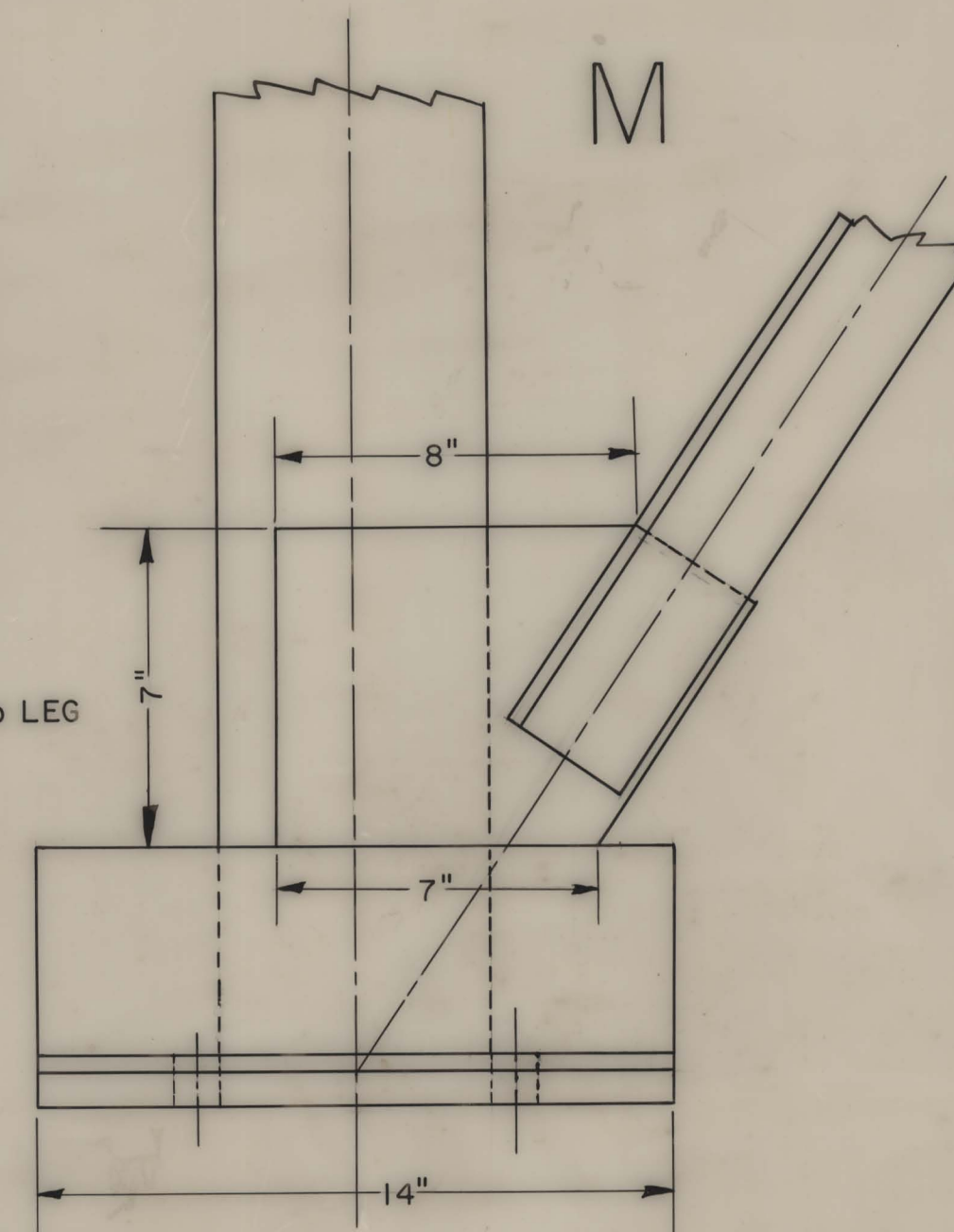
— BASES —



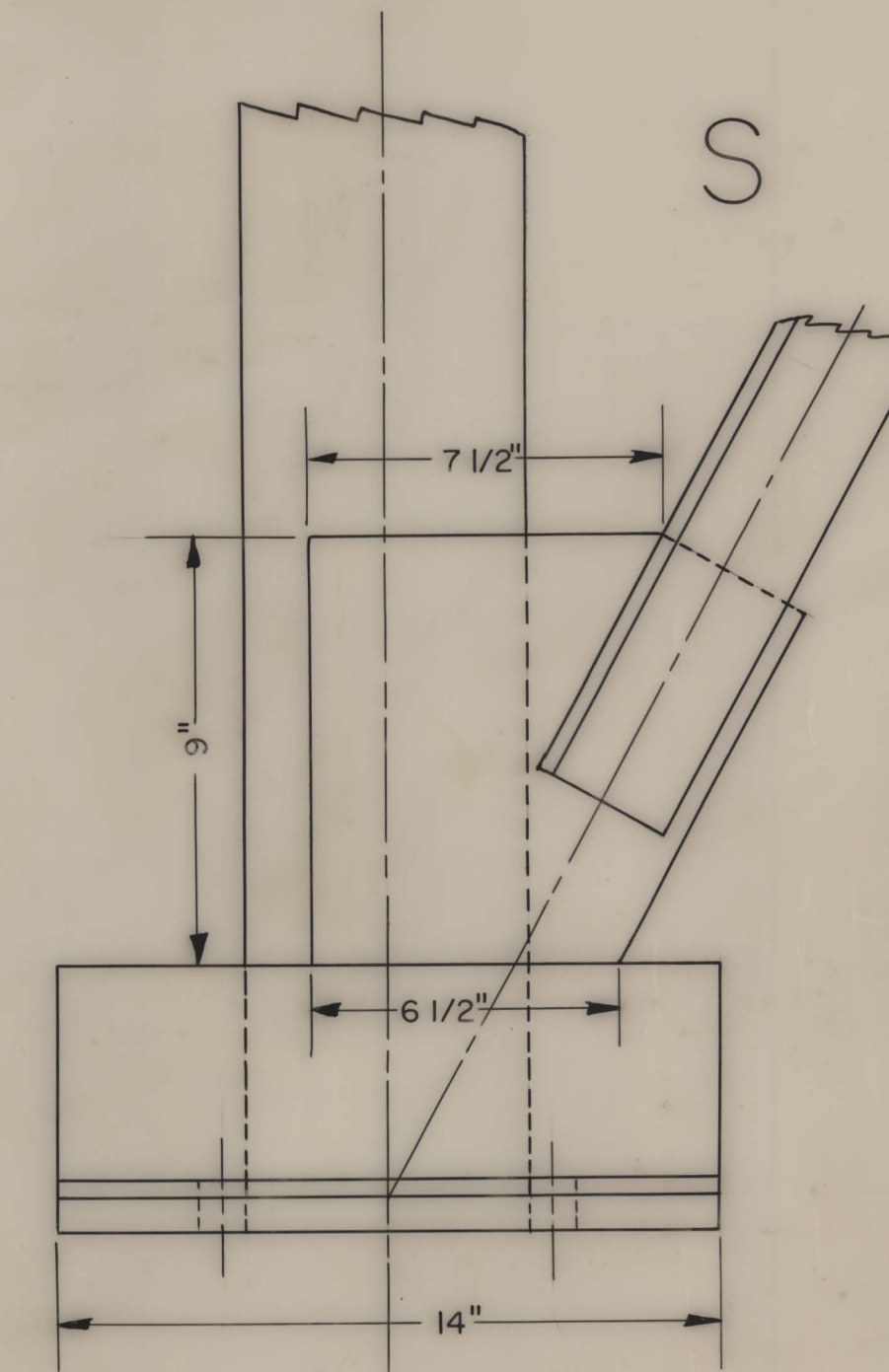
G



M



S



PLAN & FOOTINGS

SCALES :

Plan : 1/2" = 1' 0"

Concrete Footings : 1 1/2" = 1' 0"

Leg Base : 3" = 1' 0"

DESIGNED BY :

Arlen R. Bock

4/30/60