

3350 0039



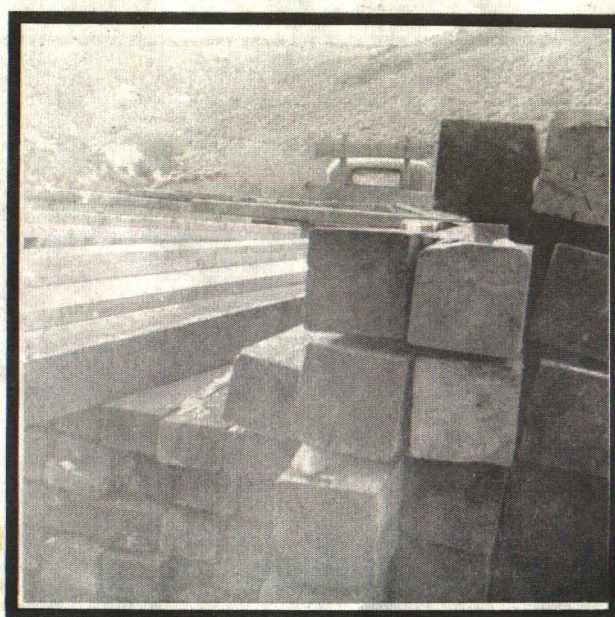
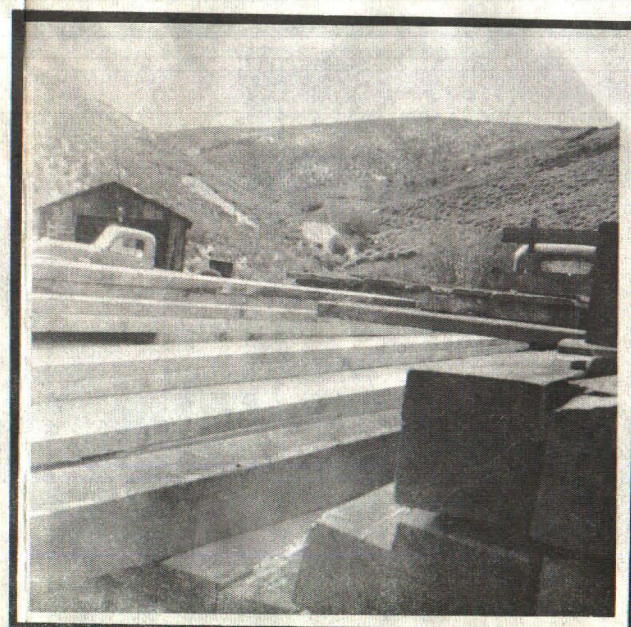
Upper right & Left: Just Pictures.

Lower left: This picture was taken about 160 feet South of the Stall shaft in the No. 5 tunnel, or about 1,100 feet from the portal. The cave had completely sealed the tunnel from top to bottom causing the water to back up behind the cave for an unknown distance and depth. It would be extremely dangerous to dig out such a cave-in without first draining the water from behind. The pipe you see the water coming from was a 3 inch air line pushed almost to the floor of the tunnel by the cave-in. This end of the air line was first sawed off and a long rod with a stick of dynamite tied to the end was inserted into the pipe and pushed as far as it would go. The dynamite was set-off, and when it exploded at the other end, the pipe was broken and allowed the water to drain as you see in the picture.

Lower right: No, this Beaver is neither digging for High-grade "Electrum" nor is he making a preliminary geological examination of the structural formations, he has merely taken for his home one of the small abandoned tunnels at the National Mine. Incidentally, the tunnel is now officially known as the "Beaver Tunnel."



3350 0039

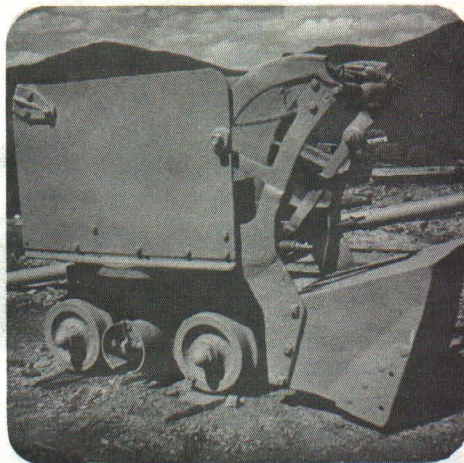


Pictures taken at the National Mine in Nevada show operational scenes and stock-piles of timbers and lagging to be used in the mine.





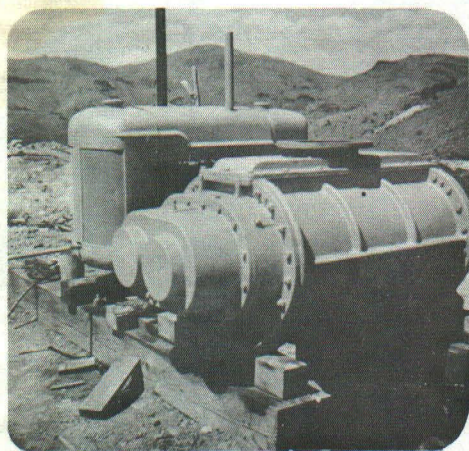
Fuel Tank - 1,000 Gal.



"Eimco" Rocker Shovel



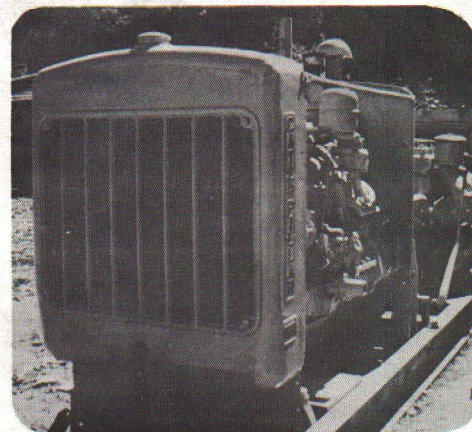
"Caterpillar" D-6



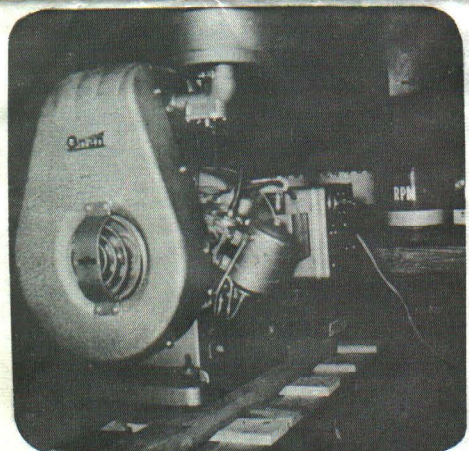
"Roots" Blower and  
"Continental" Power Plant



"Gardner Denver" 315 cf/pm  
Air Compressor



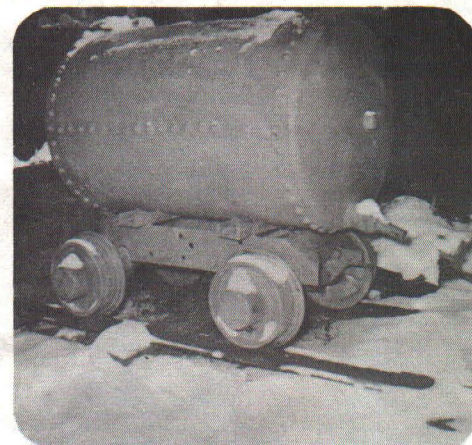
"Caterpillar" D-8800  
Power Plant



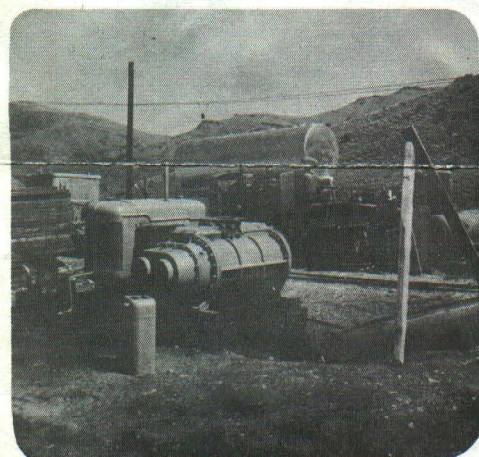
Onan" 3,000 Watt  
Diesel Electric Set.



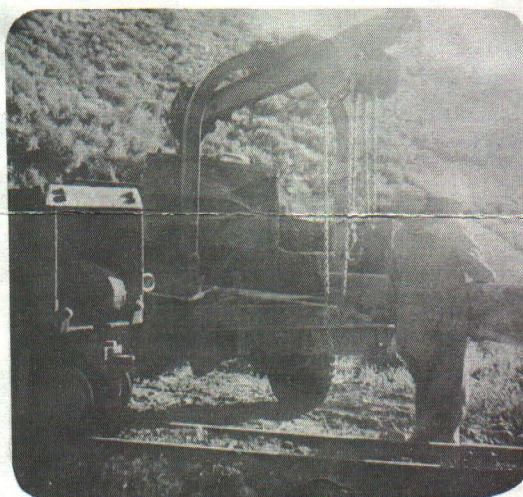
Unloading Tank



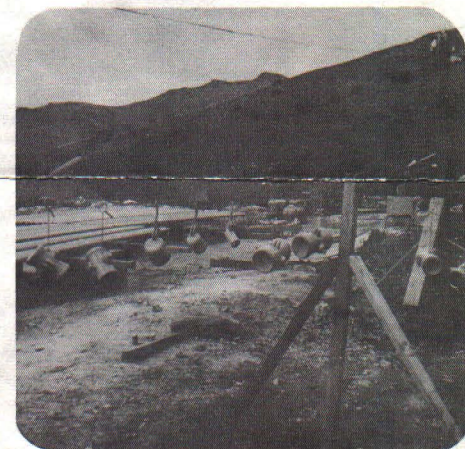
Water Pressure Tank  
Car for underground  
"Wet" drilling.



Overall view looking  
north across main dump.

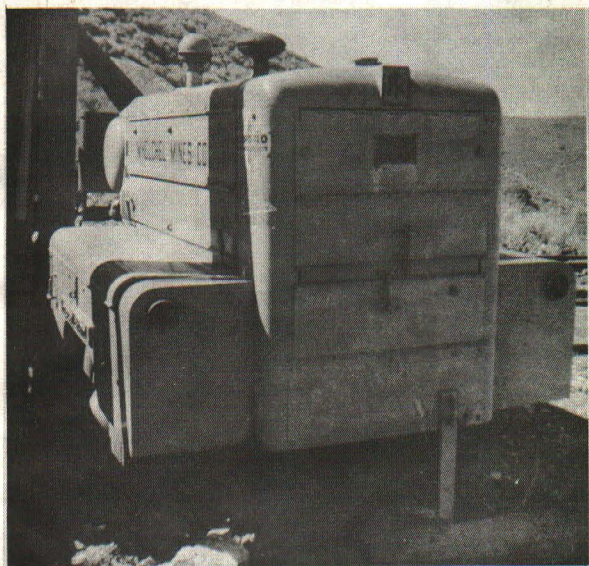


Truck-mounted hoist.

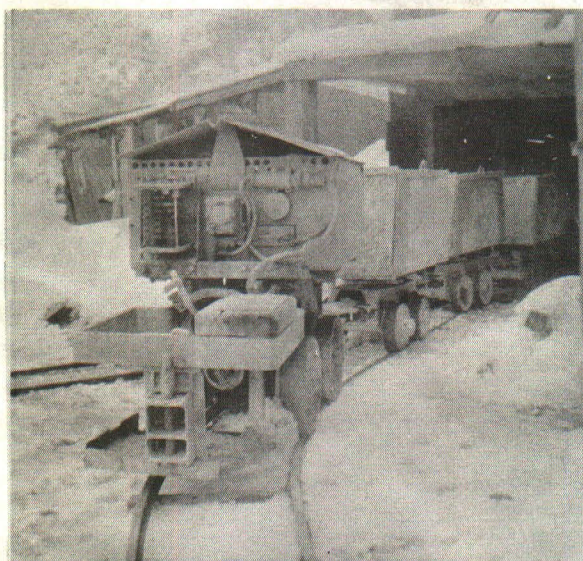


Compressed air lines.  
Treated and ready for  
tunnel installation.





"Ingersoll Rand" 125 cf/pm  
Air Compressor



"Westinghouse" 1 1/2 ton  
battery locomotive and ore  
cars.



"Dodge" 6x6 truck



"White" truck and winch



Air receiver tanks -  
1,000 gal. capacity



"G. M. C." pickup truck

The above pictures show some of the equipment owned by the WHELCH MINES COMPANY at the NATIONAL MINE in Humboldt County, Nevada.





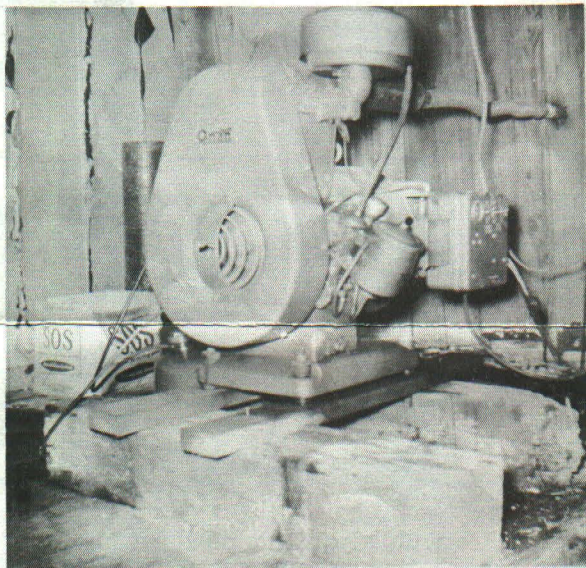
Caterpillar" D-6 Bulldozer



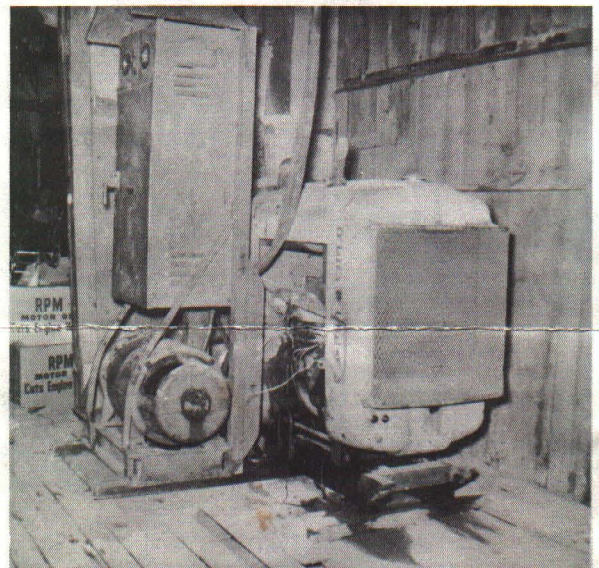
Ore car, compressor and fuel tank.



View looking southwesterly at National Mine buildings and dumps.



"Onan" 3 KVA diesel electric set.



"Hertner" battery charger and  
"Red Seal" Power plant - 30 HP.

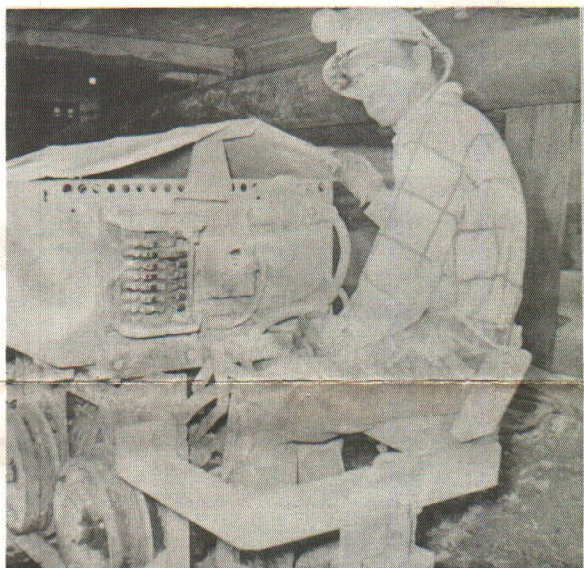




1. Loading "lagging" on timber car.



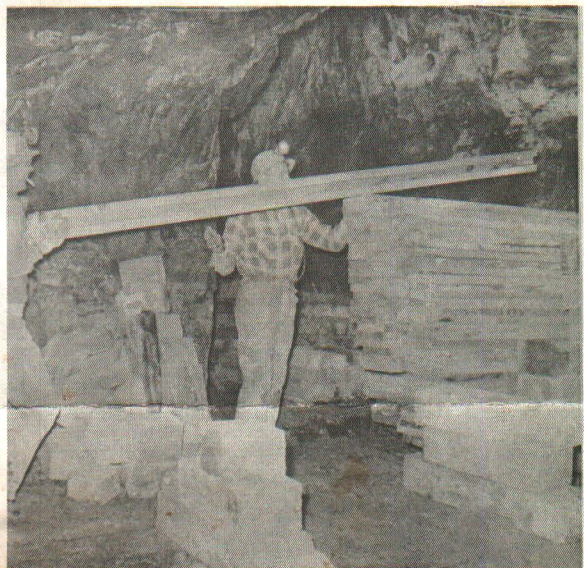
2. Load just about ready.



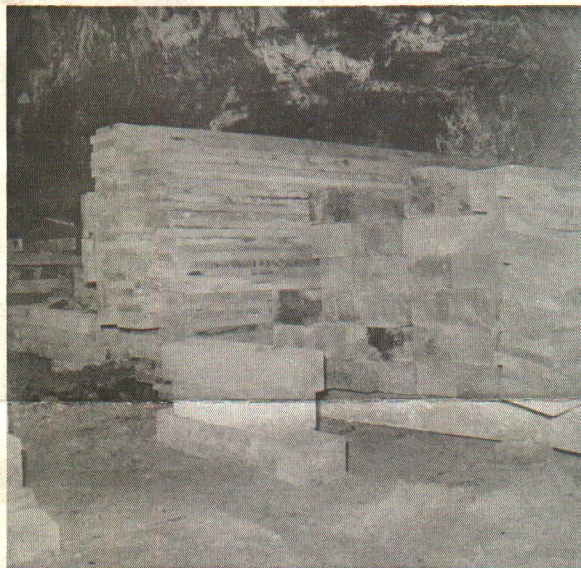
3. "O.K., let's go!"



4. On the way with lumber and empty ore cars. Cars will be filled with waste rock and mud from tunnel heading on return trip.



5. Unloading at timber stockpile station 1,500 feet from portal.

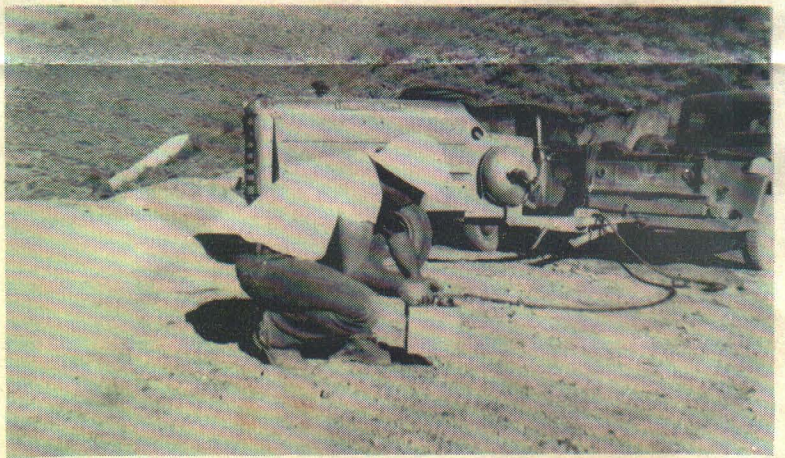
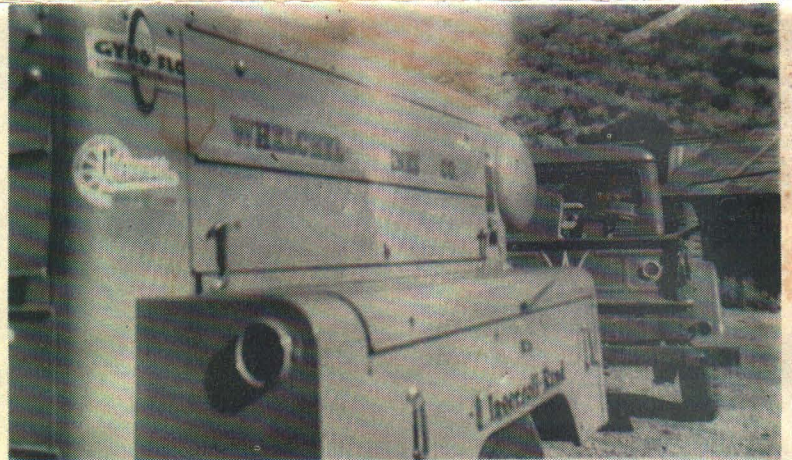
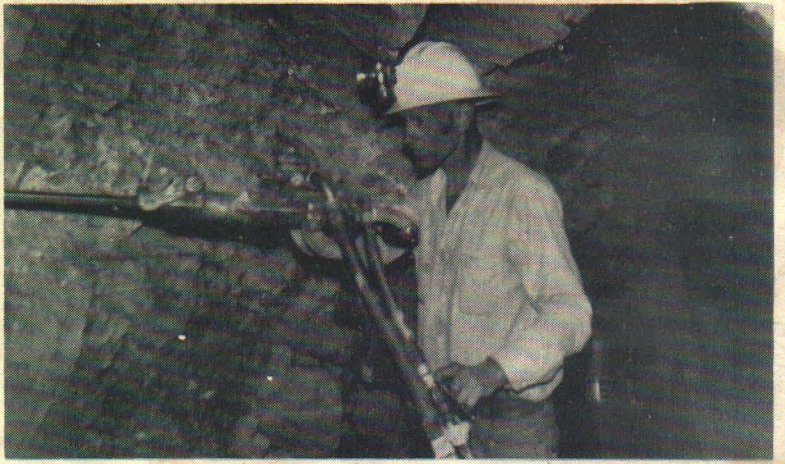


6. Picture showing part of timber stockpile ready for use at tunnel heading.

The above pictures illustrate a typical work-day job at the National Mine in Nevada.



3550 0039



Pictures of Whelchel Mines Company "operations" at National, Nevada