

U. S. Geological Survey
Box 1110, Ely, Nevada
November 30, 1943

Grand View Tungsten Claims, Black Mountain Mining Co., Snake Range,
White Pine County, Nevada

by
Dwight M. Lemmon

The Grand View tungsten claims are on the west slope of the Snake Range about 15 miles north of Sacramento Pass, probably in section 11, T. 17 N., R. 68 E. They are reached from paved U. S. Highway 6 by following the graded dirt road along the east side of Spring Valley for 15 miles north of Sacramento Pass to a point $\frac{1}{2}$ mile south of the Eldredge Ranch, then turning east for 3 miles up an unimproved road. From the end of this road, the claims are a mile by indistinct trail that goes over the ridge to the south into the next canyon.

The 4 unpatented claims were located by Wm. W. Choate on July 10, 1943 in the name of the Black Mountain Mining Co. of Delle, Utah. This company is a limited partnership of about 25 people, with Wm. W. Choate as general partner in control. The scheelite occurrence was first discovered by an Indian named Chidester, who works for Choate.

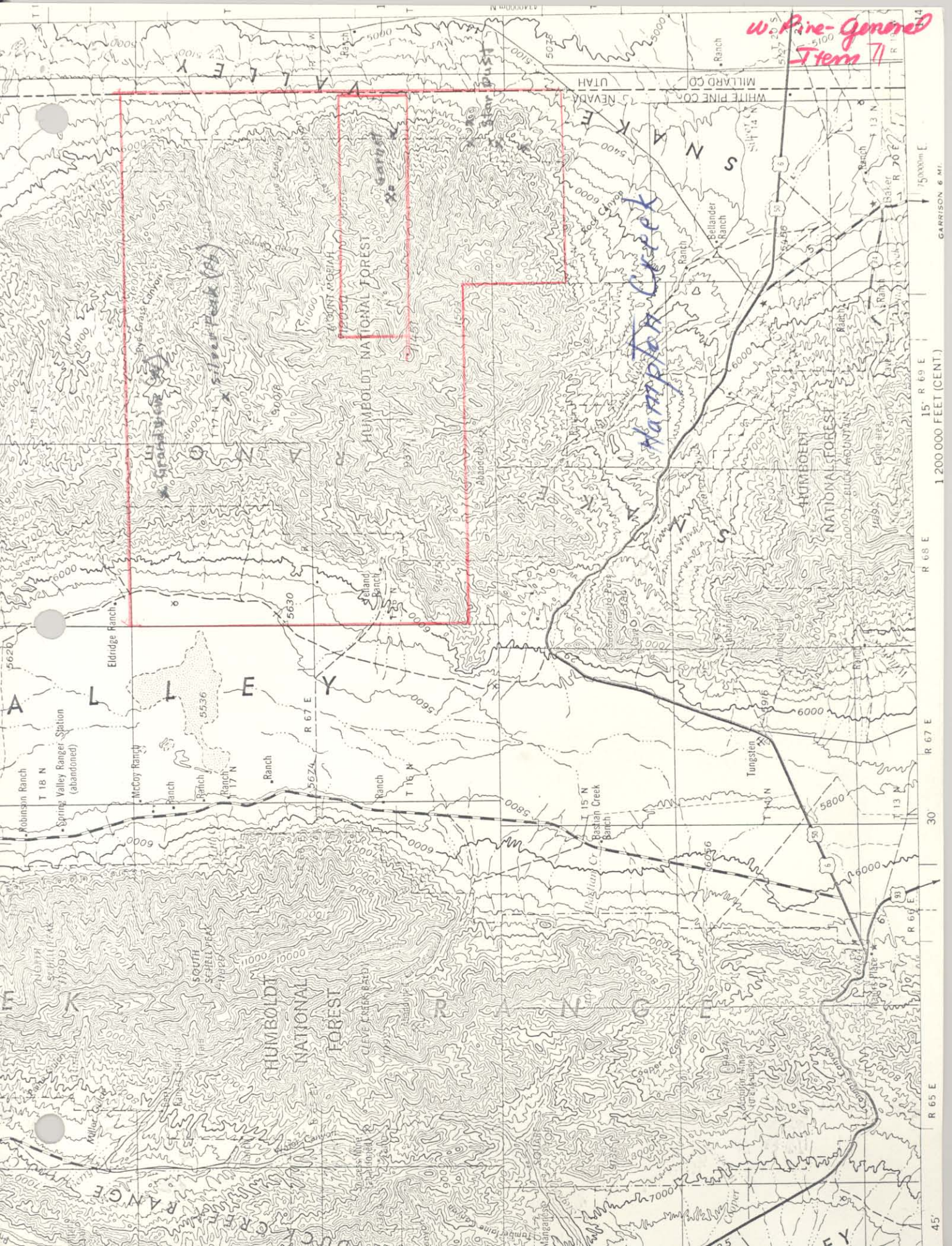
I spent part of November 18 at the prospect with Mr. Choate.

Scheelite has been found at only one place on the claims. The only workings consist of an open cut into the hillside about 15 feet long, 4 feet wide, and up to 8 feet deep. Scheelite mineralization is exposed for a width of about 3 feet along the axis of the cut; possible extensions are covered by debris. The ore, consisting of coarse-grained scheelite in silicified limestone, borders a six-inch streak of galena-bearing quartz and calcite. The ore follows no well defined structure; so it cannot be projected much beyond the visible limits. Two samples of sorted high-grade run for Mr. Choate contained 5 and 7% of WO_3 . These assays are much higher than my estimate of a pocketfull of specimens that I chose at random from the small pile containing a few hundred pounds of sorted ore.

The ore occurrence is in Cambrian limestone about 100 feet above the base of the limestone. The limestone is underlain by schist and quartzite, equivalents of Pioche shale and Prospect Mountain quartzite.

In the absence of development, no ore can be inferred. Choate apparently expects that the ground will be prospected by the Geological Survey and Bureau of Mines, made accessible by the Bureau of Public Roads, developed by Reconstruction Finance Corporation, and further financed by Metals Reserve Co. He has applications pending with all these agencies.

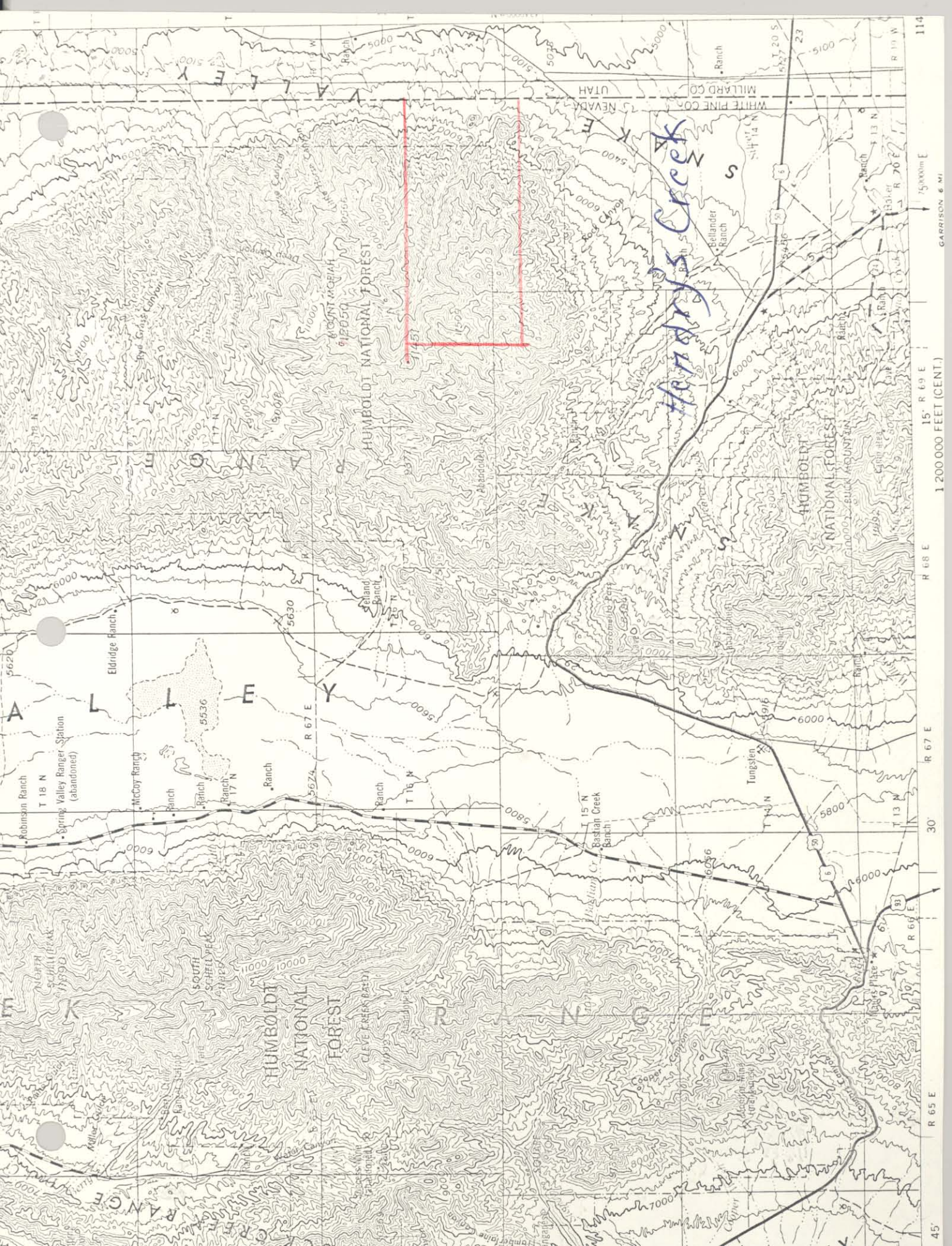
I expect that a few tons of good grade ore could be sorted from the occurrence. The orebody is too small to warrant an access road or other government assistance. I regret that snow conditions will prevent my examining the prospect in ultraviolet light this year, but do not anticipate that such examination would change my opinion materially.



w. Pine-Genesed
Item 7

Humboldt Creek

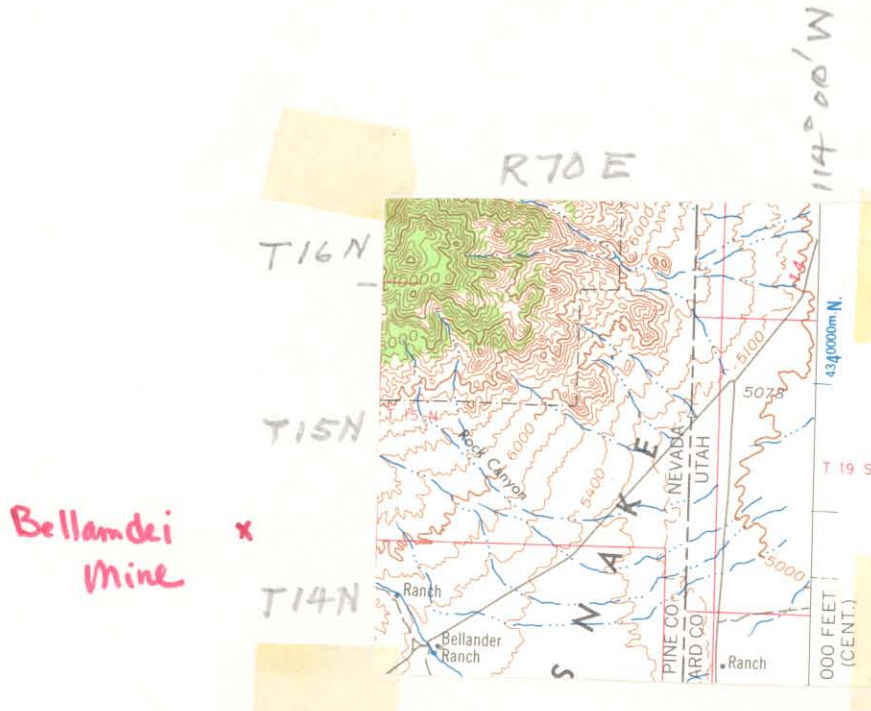
15° R 69 E
1200000 FEET (CENT.)
R 68 E
R 67 E
R 66 E
R 65 E
45°
30°
15°
0°
15°
30°
45°
60°
75°
90°
105°
120°
135°
150°
165°
180°
195°
210°
225°
240°
255°
270°
285°
300°
315°
330°
345°
360°



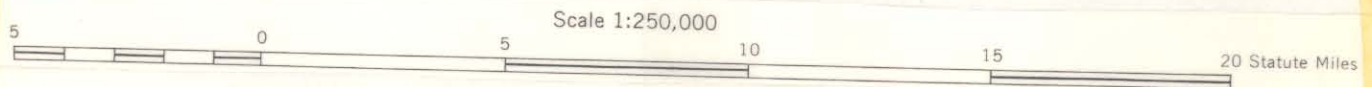
114
15' R 69 E
1200000 FEET (CENT.)
R 68 E
R 67 E
30
R 65 E
45
150000m E
GASOLIN 6 MI

White Pine general

Item 71



Rock Canyon area



for Star Dust Mines
see Hendry's Cr. Canyon