



United States Department of the Interior

BUREAU OF LAND MANAGEMENT

Battle Mountain Field Office
50 Bastian Road
Battle Mountain, Nevada 89820
<http://www.nv.blm.gov>



In Reply Refer To:
3809/1790 (NV063)
NVN-082096
NV063-EIS07-019

FEB 27 2007

RECEIVED

MAR 02 2007

DEPARTMENT OF ADMINISTRATION
OFFICE OF THE DIRECTOR
BUDGET AND PLANNING DIVISION

Dear Interested Party:

In September of 2006, Idaho General Mines, Inc. (IGMI) submitted a proposed Plan of Operations (Plan) for the Mount Hope Molybdenum Mine Project, pursuant to Federal regulations for the surface management (of mining) at 43 CFR 3809. The Bureau of Land Management (BLM) has determined that an Environmental Impact Statement (EIS) will be prepared to analyze the proposed Plan for the Mount Hope Molybdenum Mine Project (Project). The Project is located in central Nevada approximately 23 miles northwest of the town of Eureka in Eureka County.

The proposed Project is located within Townships 20, 21, 22, and 23 North, Ranges 51 and 52 East in Eureka County. The Herd Management Areas (HMA) within the Project Area or vicinity are the Whistler and Roberts Mountain HMAs. The proposal is to develop, operate, and close a molybdenum mine and processing operation on both public and private lands in Eureka County, Nevada. Approximately 8,384 acres of disturbance would occur as a result of the proposed development, most of which would be located on federal land administered by the BLM Battle Mountain Field Office.

The project would involve the construction and development of the following primary components: an open pit for development of the Mount Hope ore body with an in-pit groundwater dewatering system; waste rock storage areas; milling facilities including a crusher, conveyors, semi-autogenous (SAG) and ball mills, and flotation circuits and concentrate dewatering, a ferric chloride concentrate leach circuit and filtration and drying circuits; a molybdenite concentrate roaster; two tailings impoundments and associated tails delivery and water reclaim systems; high and low grade ore stockpiles; water supply well fields with associated rights-of-way for water delivery pipeline and power; incoming electrical power supply line from either the existing Falcon to Gonder line or a 230 kV line, with a substation and distribution system; haul, exploration, secondary, and access roads; relocation of existing Falcon to Gonder 230-kV transmission line segments in the project area; and ancillary facilities including growth media stockpiles, diversion ditches, and stormwater runoff controls.

The mine and milling facility would operate for approximately 53 years. Up to 100 tons of molybdenite concentrate per day would be processed through the roaster. Concurrent reclamation would be conducted during the 53-year operating period as mining in an area is completed. Site closure and final reclamation would be undertaken at the end of mining and milling.

The BLM is seeking your input regarding issues that should be analyzed in the EIS. A Notice of Intent (NOI) will be published in the Federal Register on March 2, 2007, formally opening a public scoping period for the EIS. Written comments on the scope of the EIS must be post-marked or otherwise delivered by 4:30 p.m. on April 6, 2007. Your response is important and will be considered in the environmental analysis process. Comments, including names, street addresses, e-mail addresses, and phone numbers of respondents will be available for public review at the Battle Mountain Field Office during regular business hours (8:00 a.m. to 4:30 p.m. Monday through Friday, except holidays). Before including your address, phone number, e-mail address, or other personal identifying information in your comment, you should be aware that your entire comment – including your personal identifying information – may be made publicly available at any time. While you can ask us in your comment to withhold your personal identifying information from public review, we cannot guarantee that we will be able to do so. All submissions from organizations and businesses, and from individuals identifying themselves as representatives or officials of organizations or businesses, will be available for public inspection in their entirety.

Two public scoping meetings will be held:

- March 27, 2007, from 6:00 PM to 8:00 PM at the Eureka Opera House, in Eureka, NV.
- March 28, 2007, from 6:00 PM to 8:00 PM at the Battle Mountain BLM Field Office, in Battle Mountain, NV.

The meetings will be in an open house format and may include a brief presentation. At each meeting, there will be comment forms for your use. Representatives from IGMI and from BLM will be present to answer questions you might have. If you would like your name removed from this project's mailing list please contact Angelica Ordaz, Planning and Environmental Coordinator at (775)635-4000.

Written comments as to the scope of the EIS analysis can be mailed to:

Bureau of Land Management
Attn: Stephen Drummond
Battle Mountain Field Office
50 Bastian Road
Battle Mountain, NV 89820

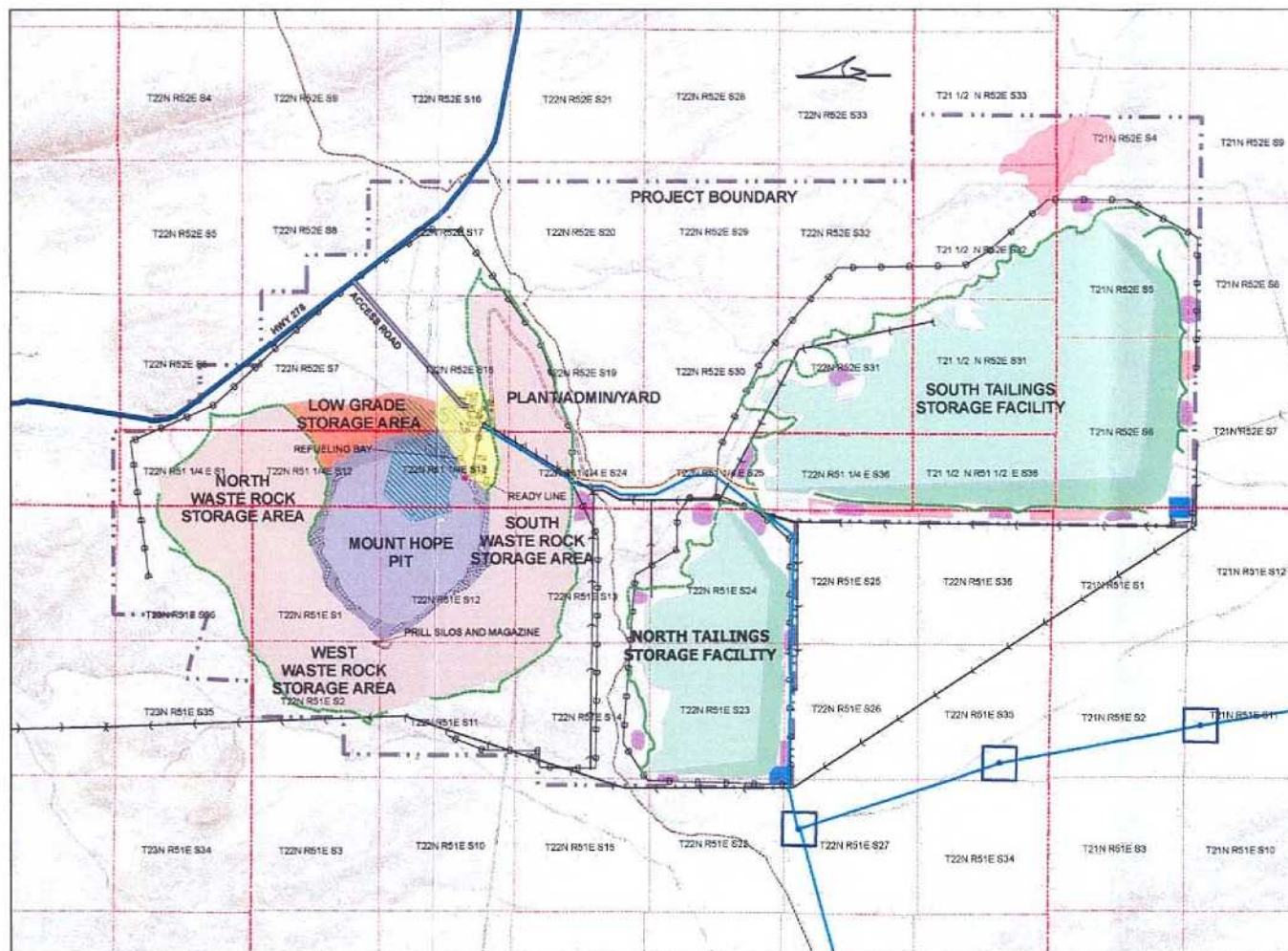
Sincerely,



FOR
Thomas J. Seley
Assistant Field Manager
Nonrenewable Resources

Enclosures (2):

1. General Location Map
2. Proposed Operations Map (Year 53)



SOURCE: IMC AND SWC

LEGEND

- Surface Ground Contour and Elevation at 10' Intervals
- Access Road
- State Route 278
- Unpaved Roads
- Pony Express Trail
- Tailings Dam Road
- Haul Roads
- Section Line
- Township
- Fence
- Tailings Reclaim Line Corridor
- Concrete Vault
- Existing Powerline
- Proposed Powerline
- Waterline
- 40-Acre Parcel Pertaining to Water Rights
- Well
- Diversion Channel
- Private Land
- Project Boundary
- Growth Media Stockpile
- Mount Hope Pit -100' Contour Interval
- Tailings Facility -20' Contour Interval
- Tailings Facility -125' Slope
- Plant-Admin Yard
- Underdrain Pond
- Temporary Low Grade Ore Storage Area
- Waste Rock Storage Area
- Borrow Pit
- High Grade Stockpile

IDAHO GENERAL MINES, INC.

DATE:
30-05-2008
DESIGN:
DRAFTED:
SCALE:
1"=800'

MOUNT HOPE PROJECT
PROPOSED ACTIVITIES
YEAR 53

FIGURE 3

REFERENCE NUMBER
157501