

2960 0077

240

Item 77

MONTEDEORO CORPORATION

460 Valle Del Oro Road
Tucson, Arizona 85704

(602) 297-1657

A PROPOSAL FOR INVESTIGATION OF THE
MONTEDEORO CORPORATION MANHATTAN MINE PROPERTY
MANHATTAN MINING DISTRICT
NYE COUNTY, NEVADA

Location.

The Montedeoro Manhattan Mine property is in northern Nye County, Nevada about 35 miles NNE of Tonopah and 2.5 miles due east of Manhattan (Fig.1). Access to the property is excellent via 2 miles of graded dirt road east from Manhattan and then one-half mile of unmaintained dirt road south to the property.

Land Status.

The Montedeoro property consists of eleven unpatented lode mining claims; the outline of the claim group is shown on Figure 1.

Past Production.

The Manhattan district has produced almost 500,000 ounces of gold, nearly 60% of which came from lode mining. Incomplete records indicate that the Manhattan mine had a small but high-grade production of 1053 tons averaging 1.23 oz/ton gold. According to the former owner, spectacular specimen ore was recovered from the Manhattan Mine.

Geology.

The Manhattan Mine property is situated along the southern boundary of the Manhattan caldera, a major Tertiary feature mapped by Shawe (1981). Gold mineralization throughout the district occurs within or adjacent to the ring fracture which separates Tertiary rhyolites and tuffs of the Esmeralda Formation from Cambrian and Ordovician quartzites, argillites, and limestone. The Manhattan Mine property is underlain by limestones of the Ordovician Toiyabe Formation.

Mineralization.

High-grade native gold occurs in a series of narrow northeasterly-trending quartz veins, three of which are exposed in the Manhattan tunnel (unpublished 1980 report by Resource Exploration, Inc.). These veins, which are 1-3 feet in width at the tunnel level, contained small, erratically distributed pockets of bonanza-grade free gold, reportedly at structural intersections with cross veins or fractures. However, ore-controls are poorly understood.

References Cited

Kral, V.E., 1951, Mineral Resources of Nye County, Nevada: Nevada Bur. Mines and Geol. Bull. 50, 223 p.

Resource Exploration, Inc., 1980, Preliminary geologic evaluation of mining claims owned by Fletcher Mining and Milling Corp. and Montedeoro Corp. in the Manhattan Mining district, Nye County, Nevada: unpublished company report, 15 p.

Shawe, D.R., 1981, Geologic map of the Manhattan quadrangle, Nye County, Nevada: U.S. Geol. Survey Open-File Report 81-516.

Shawe, D.R., 1982, Maps showing gold and silver potential of the Round Mountain and Manhattan quadrangles, Nye County, Nevada: USGS Map MF-1467.

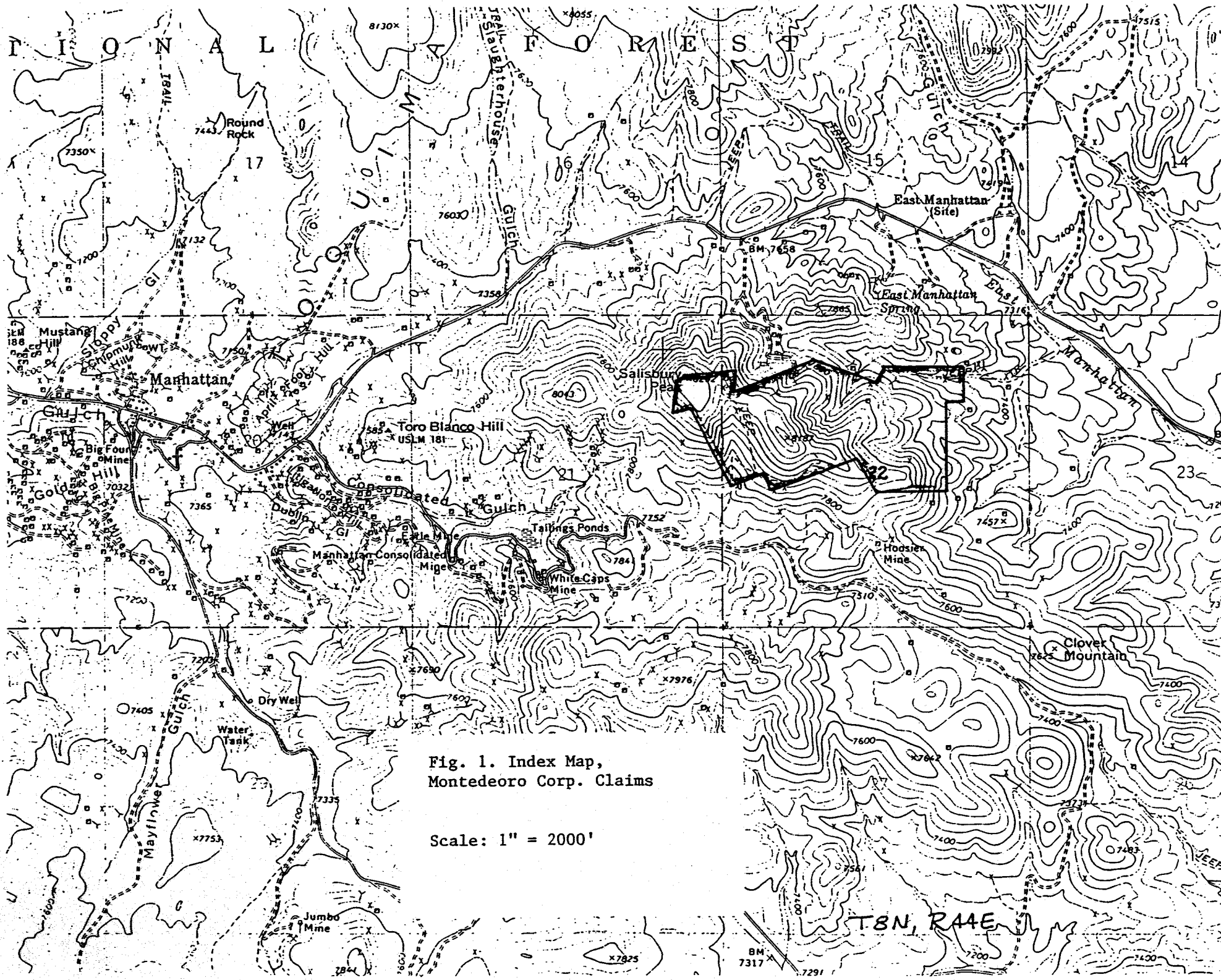
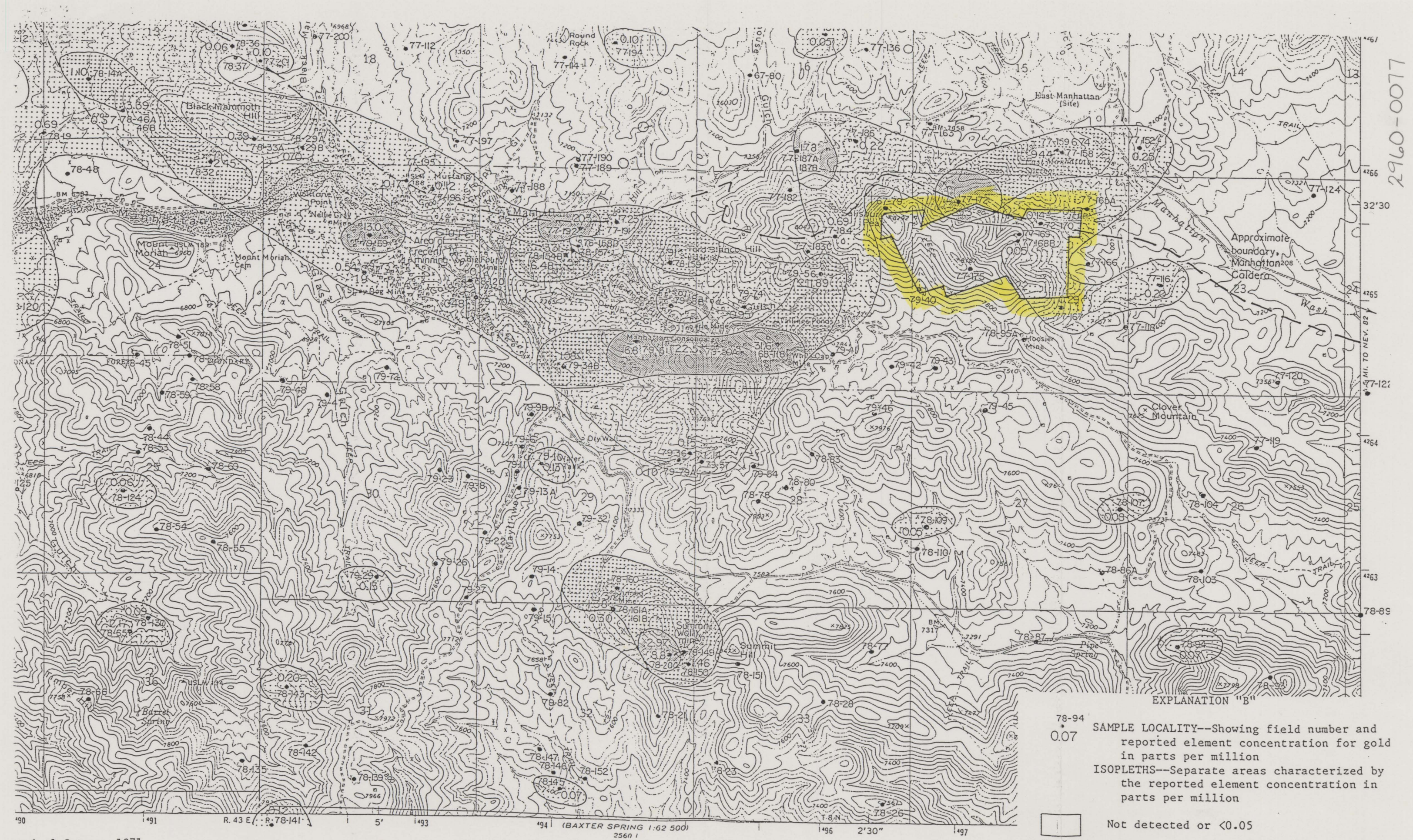


Fig. 1. Index Map,
Montedeoro Corp. Claims

Scale: 1" = 2000'

T8N, R44E

2960-0077



ological Survey, 1971

Fig. 2
MAP B-MAP SHOWING DISTRIBUTION OF GOLD IN THE MANHATTAN QUADRANGLE
Shawe, 1982

USGS MF-1467