

2950 0032

116
ITEM 38

AUG - 1 1997



United States Department of the Interior

BUREAU OF LAND MANAGEMENT

Elko Field Office
3900 E. Idaho Street
Elko, Nevada 89801

JUL 30 1997

In reply refer to:
1793.7
3809 (NV-013)

RECEIVED

FEB 23 1998

Dear Interested Party:

NBMG Information Office

The Bureau of Land Management (BLM), Elko Field Office, in cooperation with Newmont /Barrick HD Venture, will be preparing an environmental impact statement (EIS) on a mining Plan of Operations for the Leeville Project located in Eureka County, Nevada. The public is invited to submit comments on the scope of the analysis until September 2, 1997. A public scoping meeting will be held to provide information to the public and to obtain comment. This scoping meeting will be held at the BLM's Elko Field Office at 3900 E. Idaho Street, Elko, Nevada, on Wednesday, August 20, 1997 at 6:30 p.m. and may continue until 9:00 p.m., if necessary.

The Leeville project is located approximately 20 air miles northwest of Carlin, Nevada. The proposed Leeville Project would consist of an underground mine which would develop the West Leeville, Four Corners, and Turf deposits and would include surface support facilities, access and haul roads, waste rock facility, stockpiles, powerlines, dewatering wells, pipelines, and water treatment facilities. Proposed mining operations and dewatering would last for approximately 18 years, through the year 2017. Surface disturbance is anticipated on approximately 457 acres of public land and 39 acres of private land. A project description, provided by Newmont, and maps from the Leeville Project Plan of Operations are included for review, including, Location Map (Figure 1), Proposed Surface Disturbance (Figure 3), and Dewatering Discharge Pipeline Route (Figure 5).

The public is asked to help identify issues related to this proposal. The EIS will include analysis of potential impacts to ground water availability and quality, wildlife, and cultural resources. Cumulative impacts will also be addressed. In addition, the following resources will be analyzed: recreation and wilderness, geology, paleontology, air quality, soils, vegetation, range management, lands and realty, visual resources, social and economic values, and hazardous materials. A range of alternatives will be developed to address the issues.

Federal, state and local agencies and other individuals or organizations who may be interested in or affected by the Bureau's decision on the Plan of Operations are invited to participate in the scoping process with respect to this analysis of environmental impacts. To be most helpful, comments should be as specific as possible.

Those persons, groups, or agencies who wish to be included on the mailing list for the EIS or who wish to submit comments, should send their comments or requests to: District Manager, BLM, 3900 E. Idaho St., Elko, NV 89801, Attn.: Leeville Project EIS Coordinator, or call Deb McFarlane at 753-0200.

Sincerely,

HELEN HANKINS,
District Manager

Attachments: As listed above.

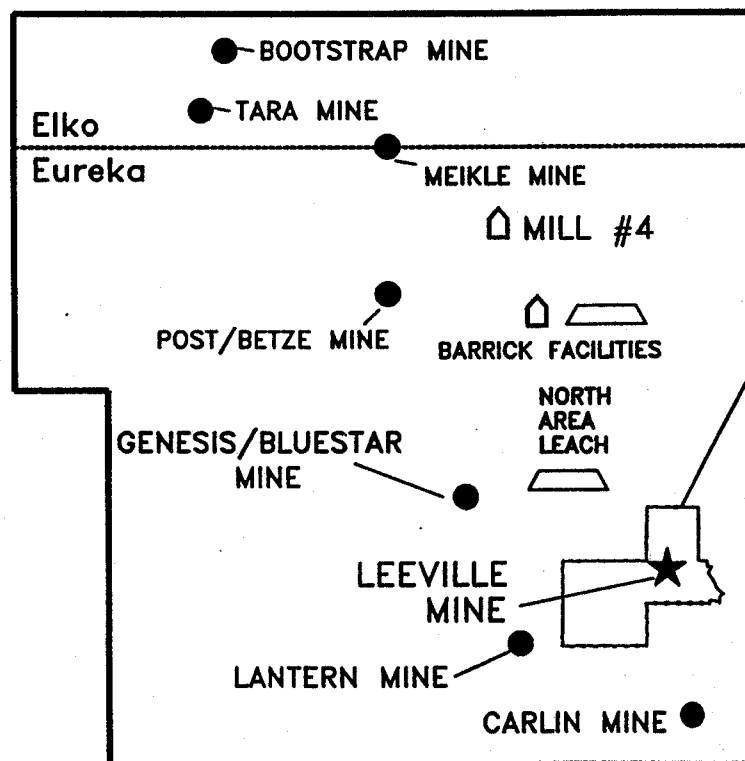
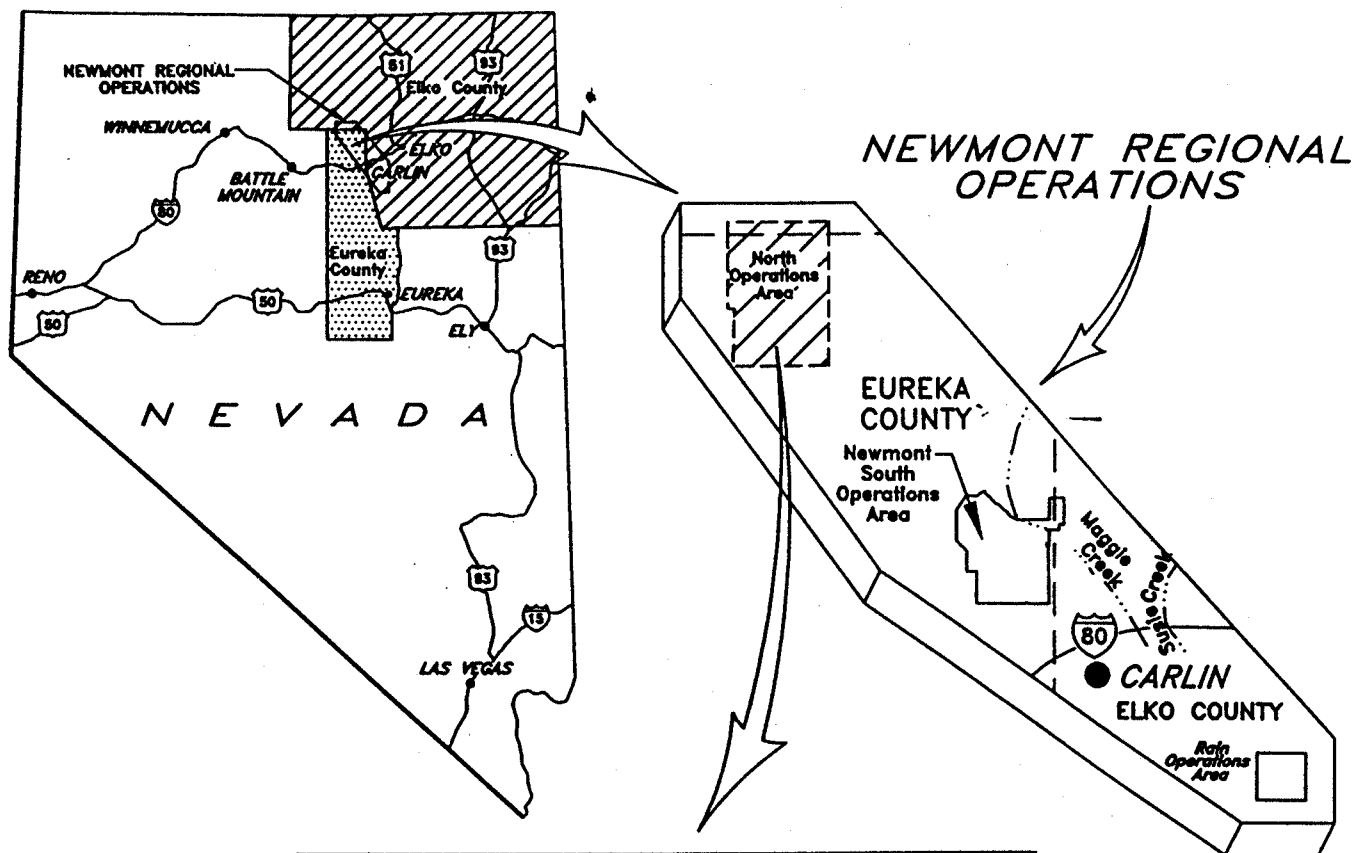
LEEVILLE PROJECT

The proposed Plan of Operations for the Leeville Project includes the construction and operation of the Leeville Mine and associated surface facilities, involving the incremental disturbance of 457 acres of public land. The Leeville Project is located in the northeastern corner of Eureka County, approximately 20 miles northwest of Carlin, Nevada. The Leeville Project lies within the Little Boulder Basin of the Tuscarora Mountains. Mineral exploration currently occurs within the Plan of Operations boundary. Proposed mining operations for the Leeville Project would continue through the year 2017. The Leeville Project is owned by the Newmont/Barrick HD Venture; Newmont is the designated operator.

The primary component of this proposed Plan of Operations is the mining of the West Leeville, Four Corners, and Turf ore bodies to recover refractory gold ores. The depth of these deposits ranges between 1,000 feet and 2,500 feet. These deposits, accessed by the Leeville production shaft and up to four ventilation shafts, would be mined using underground mining methods. The Leeville Mine operations would require mine dewatering activities. During the period of development and initial mining operations, dewatering pumping rates up to 35,000 gallons per minute are expected. Maintenance pumping during the remainder of the mine life is expected to average 20,000 gallons per minute. Water treatment, cooling, and discharge to the Humboldt River via the Boulder Valley conveyance system is planned. A portion of the water would be used by the TS Ranch for irrigation. This project lies between Barrick Goldstrike Mines Inc.'s Betze/Post Mine and Newmont Gold Company's South Operations Area in an area influenced by both dewatering cones of depression.

Mining would involve the removal of approximately 18 million tons of ore and waste rock over an 18 year period. High grade refractory ores will be processed at Newmont's Mill 6 and Barrick's milling and beneficiation facilities. The Leeville Project is expected to generate approximately 4 million tons of waste rock resulting in a new waste rock disposal facility.

Ancillary facilities, including haulage roads, access roads, laydown yards, water and solution pipelines, surface water diversion ditches, and power distribution systems are also planned.



PROPOSED
PROJECT BOUNDARY



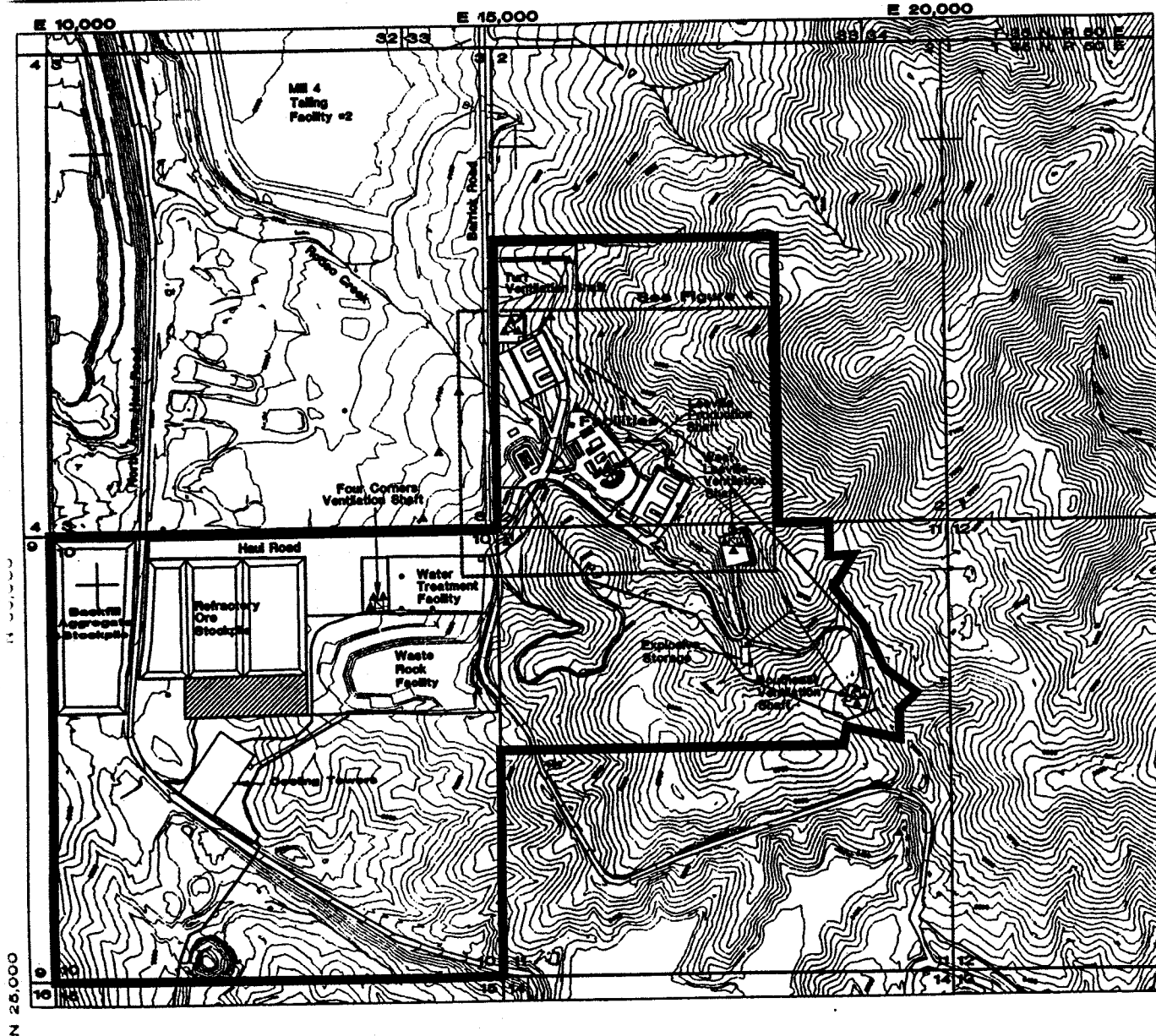
Scale:
Not to Scale

Date:
4/14/97

NEWMONT/BARRICK
LTD. VENTURE

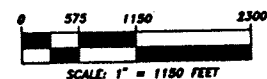
LEEVILLE PROJECT

FIGURE 1



- Topsoil Stockpile
- Shaft
- WRDF** Waste Rock Disposal Facility
- Proposed Piezometer
- Existing Piezometer
- Proposed Wells
- Existing Wells
- Proposed Project Boundary
- Proposed Facility Boundary
- Culvert
- Roads
- Intermittent Stream
- Section Lines
- Pipeline
- Powerline/Substation

Contour Grid/Elevation Base
Contour Interval 20 Feet



NEWMONT/BARRICK
HD VENTURE

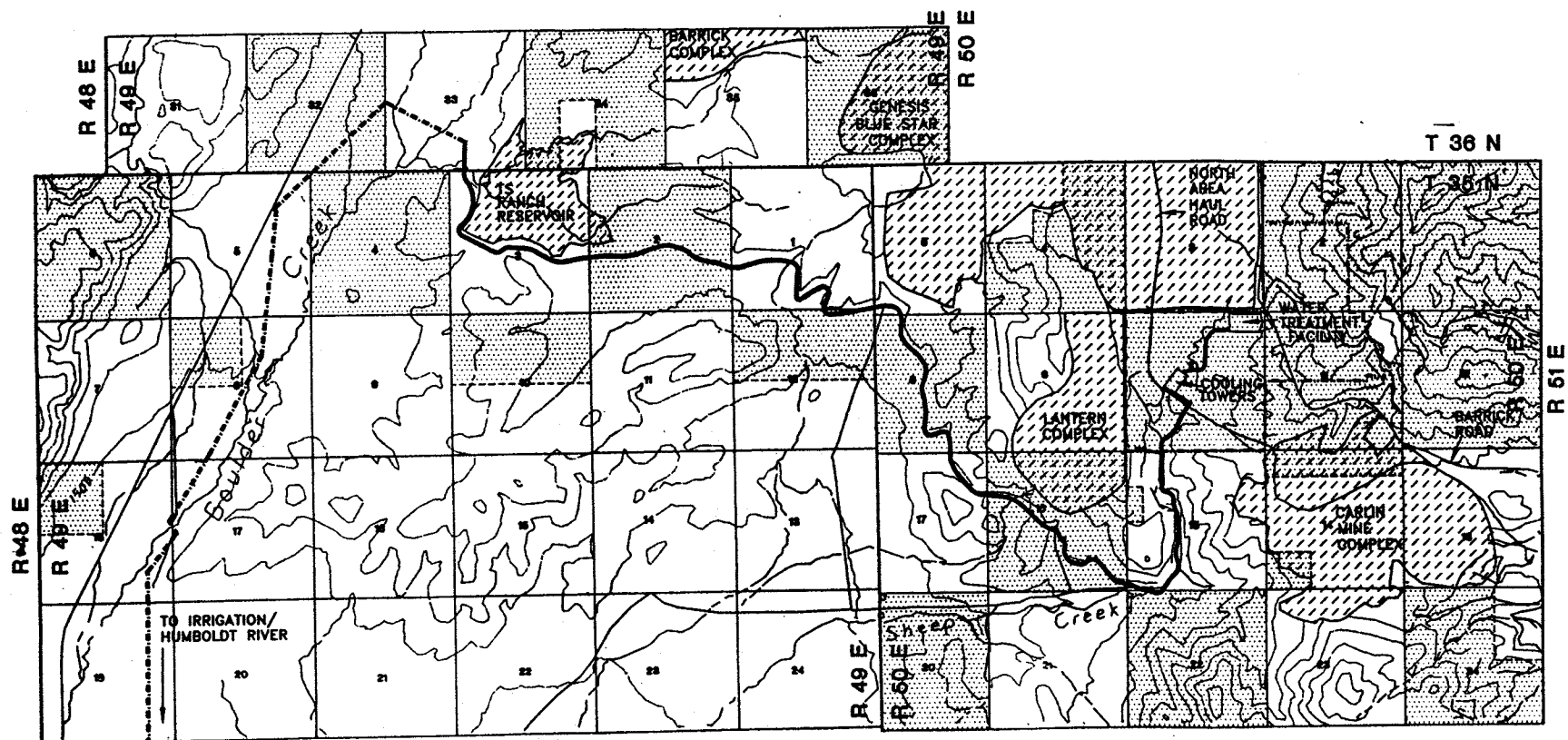
P.O. BOX 800
LEEVILLE, NEVADA 89020

NEWMONT/BARRICK IS THE DESIGN ENGINEER

LEEVILLE PROJECT

FIGURE 3 - PROPOSED
SURFACE DISTURBANCE

DATE: 08/01/00	BY: J. L. HARRIS
APP. DATE: 08/01/00	APP. FOR: J. L. HARRIS
APP. NAME: J. L. HARRIS	DATE: 08/01/00, CHECKED BY: J. L. HARRIS



**NEWMONT/BARRICK
HD VENTURE**

Key



Existing Facilities
Public Surface Lands
Private Surface Lands

Intermittent Stream
Proposed Project Boundary
Pipeline Route
Boulder Valley Conveyance System

CONTOUR INTERVAL: 50 METERS
TOPO FROM USGS 1:100000
Date: 4/18/97
Drawn By: G. Lawicki
Scale: 1"=4000'

LEEVILLE PROJECT

LEEV.DWG

**FIGURE 5 - DEWATERING
DISCHARGE PIPELINE ROUTE**