


2940 0002

115

item 2

CARLIN GOLD MINING COMPANY



Site of nation's newest gold strike is the Carlin Gold Mine and plant high up in the Tuscarora Mountains of northern Nevada. Orebody (seen in foreground) has strike length of more than a mile and a half.

CARLIN GOLD MINING COMPANY

CHRONOLOGY:

October 1961 — Newmont Mining Corporation files claims to explore area north of Carlin, Nevada.

July 1962 — Geological team from Newmont Exploration Limited (a subsidiary of Newmont) begins rotary drilling.

Sept. 10, 1962 — Gold discovered in third drill hole. Hundreds of additional holes were sunk to delineate an economically attractive orebody.

July 1963 — Newmont proposes to build a cyanidation plant for recovering gold from the ore milled.

May 1964 — Contract for engineering design and construction of plant is awarded to the Bechtel Corporation of San Francisco.

June 1964 — Bechtel crews begin construction. In ten months the mine was ready for production.

April 1965 — First gold-bearing ore is fed to Crushing Plant.

May 1965 — First gold bullion is poured.

May 27, 1965 — Carlin gold mine is dedicated.

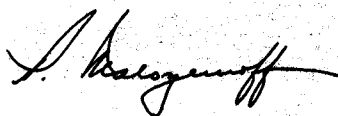




The inauguration of the Carlin Gold Mine marks a significant milestone in the history of the gold mining industry of the United States and of the State of Nevada. It is also a proud moment for us in Newmont Mining Corporation as it represents an original discovery by our geologists which in terms of production promises to be the second largest in the United States and fourth largest in North America.

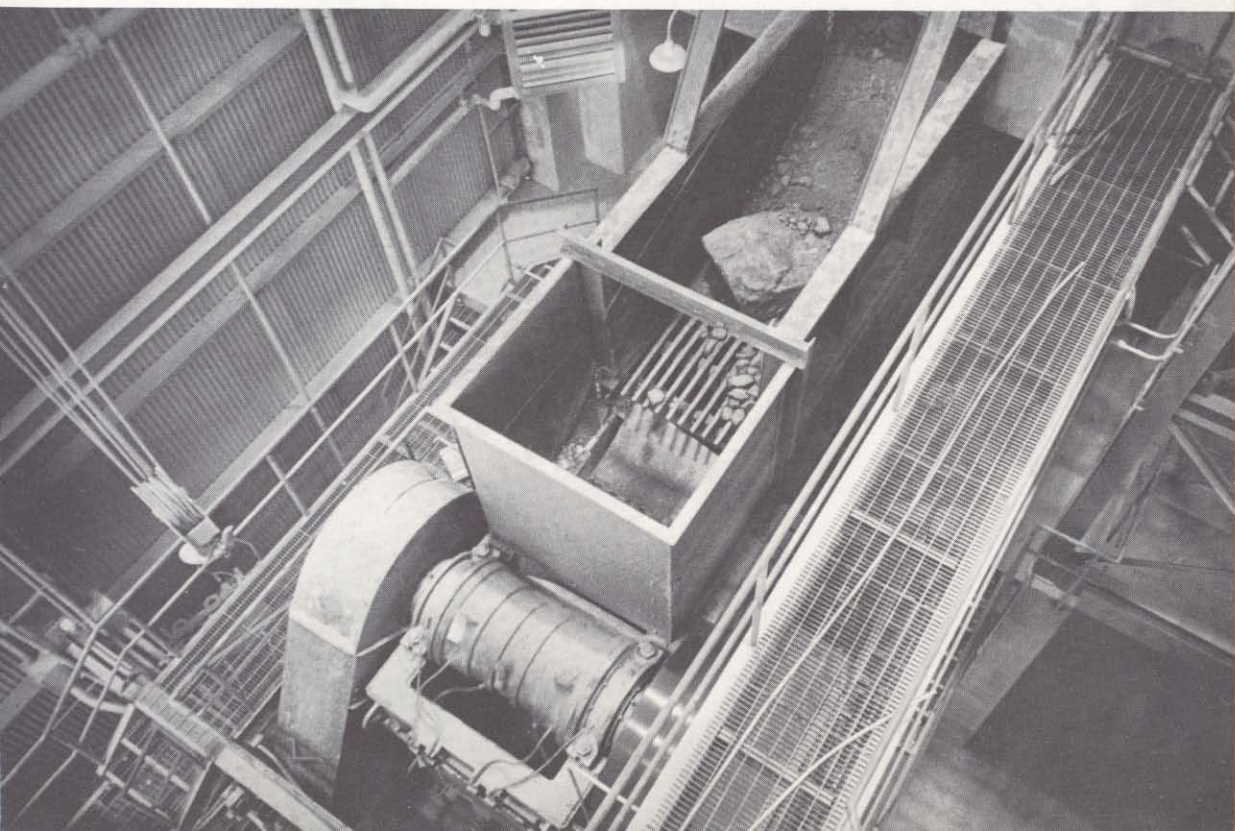
Thus Nevada will again be contributing to the wealth of our nation and to the timely solution of a current national problem, the shrinkage in our gold reserves.

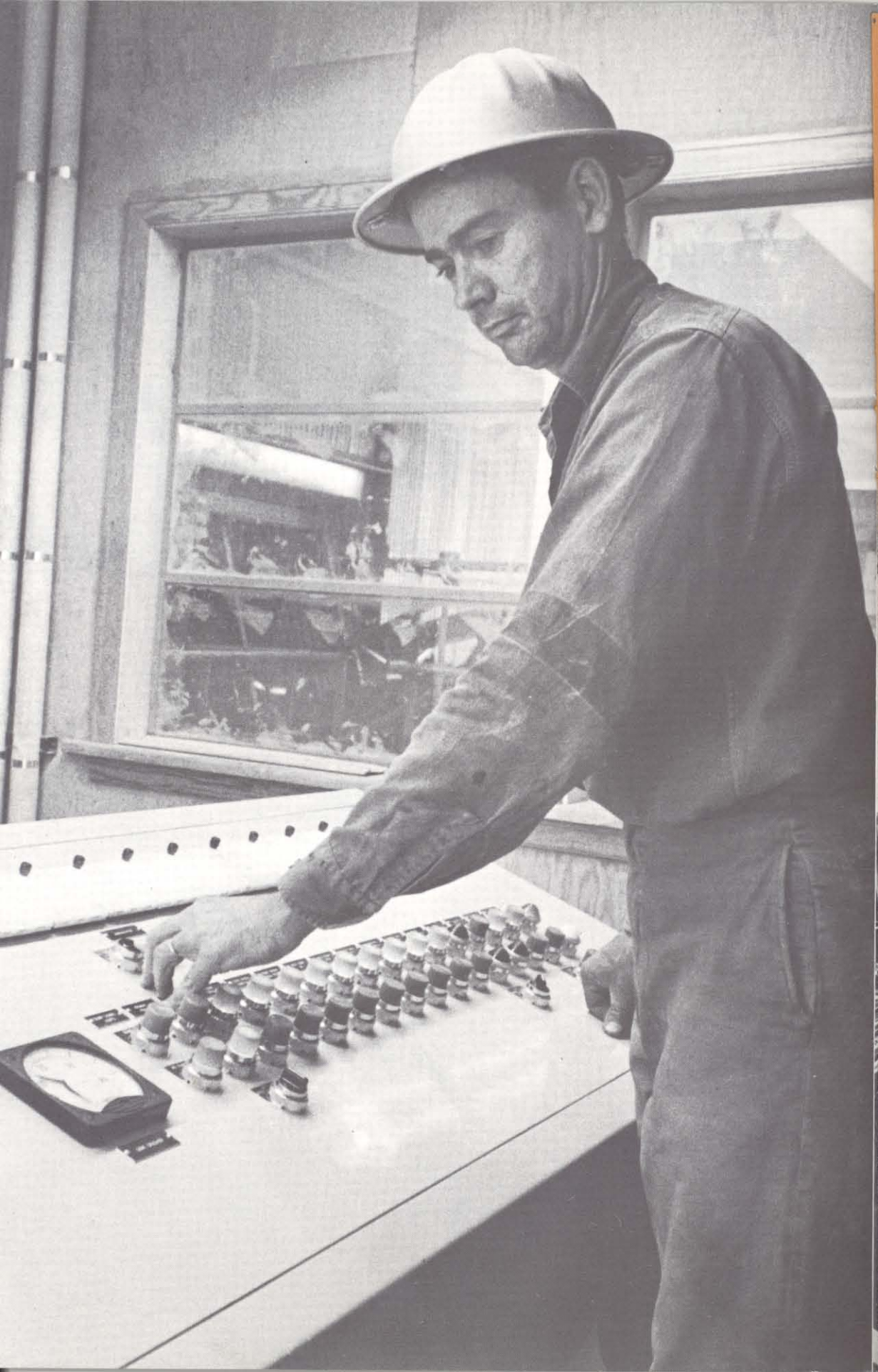
On behalf of the directors and officers of Newmont I wish to record our thanks to the citizens of Carlin and Elko, as well as to State and Federal authorities, and to our neighbors who have helped make this venture a success.

A handwritten signature in dark ink, appearing to read 'P. Malozemoff', with a stylized, flowing script.

P. Malozemoff
President
Newmont Mining Corporation

Elko, Nevada
May 27, 1965





1

Gold recovery begins at open pit excavation where ore is mined then loaded in 30-ton dump trucks.

2

Before gold can be separated, ore must be crushed to smaller size. Here truckload of ore is delivered to crusher.

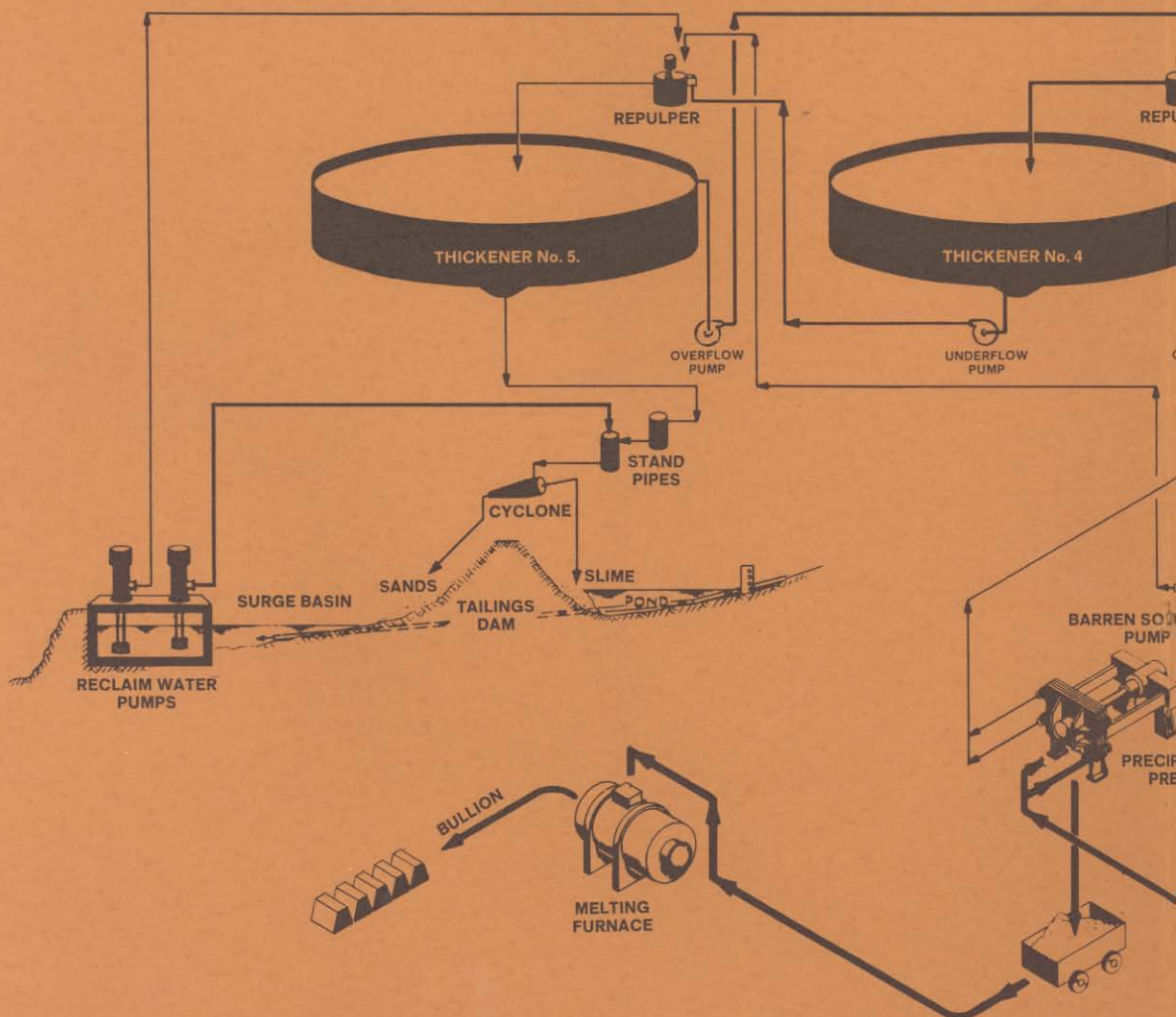
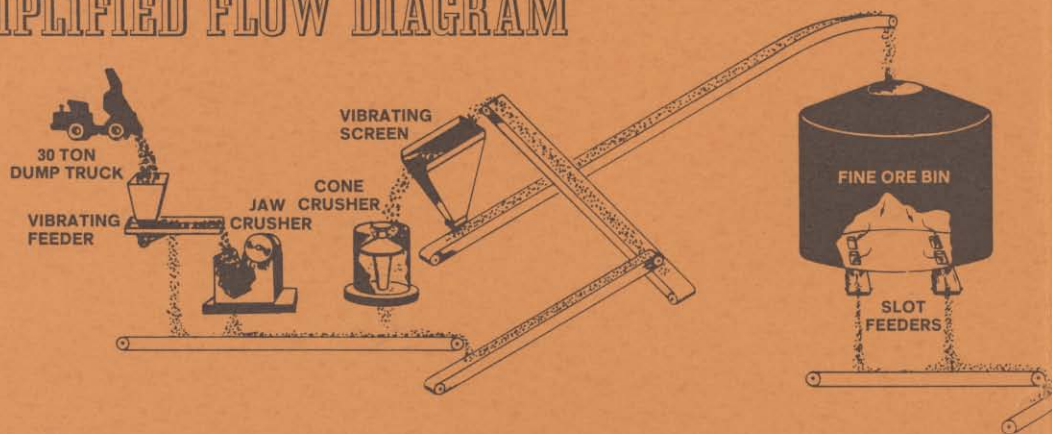
Inside Crushing Plant pieces of ore—some as large as three feet across—are reduced to size of about one inch, then conveyed to Mill for storage in three large steel bins.

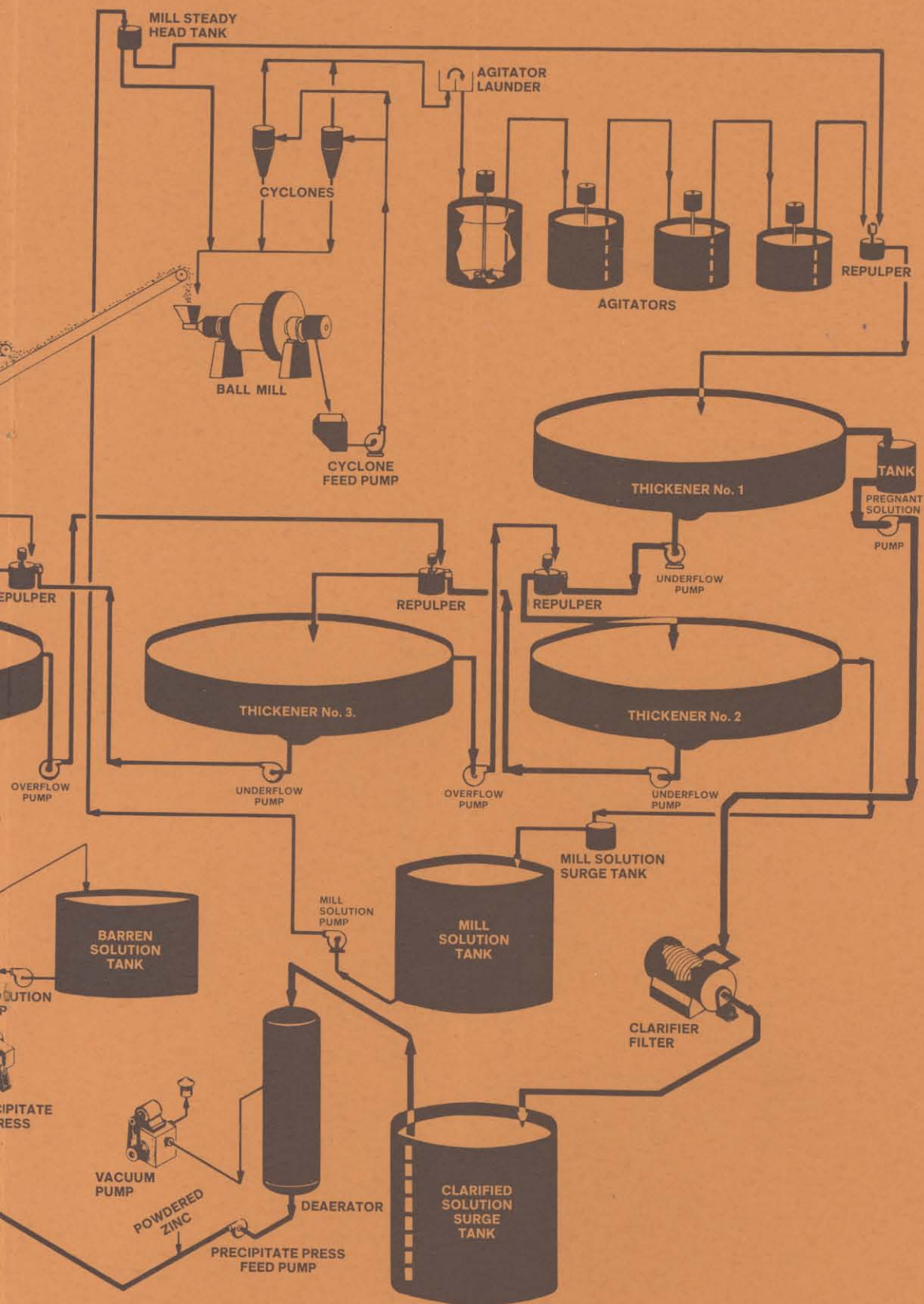
3

From Control Room in Crushing
Plant operator maintains elec-
tronic control over machinery
and regulates flow of crushed ore
to storage bins in Mill.

4

SIMPLIFIED FLOW DIAGRAM





5

Reduction of crushed ore to size of fine sand takes place in large ball mill (left). Cyanide solution is added to dissolve gold. Agitator tanks can be seen in rear, main control room at right.

6

Dissolution of gold is completed in four 30-ft. agitators where finely ground ore from the ball mill is retained for 16 hours.

7

Plant's entire operation is monitored electronically in main control room. Sensitive instruments record, report and regulate each stage of gold recovery process.

In five large thickener tanks cyanide solution containing dissolved gold is separated from the waste solids called tailings. From "thickener" tanks gold-bearing solution is pumped to final recovery process; waste is piped to "tailings" storage area.

8

In Tailings area, dam at left will hold all waste materials from plant. Water from "tailings" will be reclaimed by a pumping installation located immediately below dam (right foreground) where facilities for water purification are also installed.

9

10

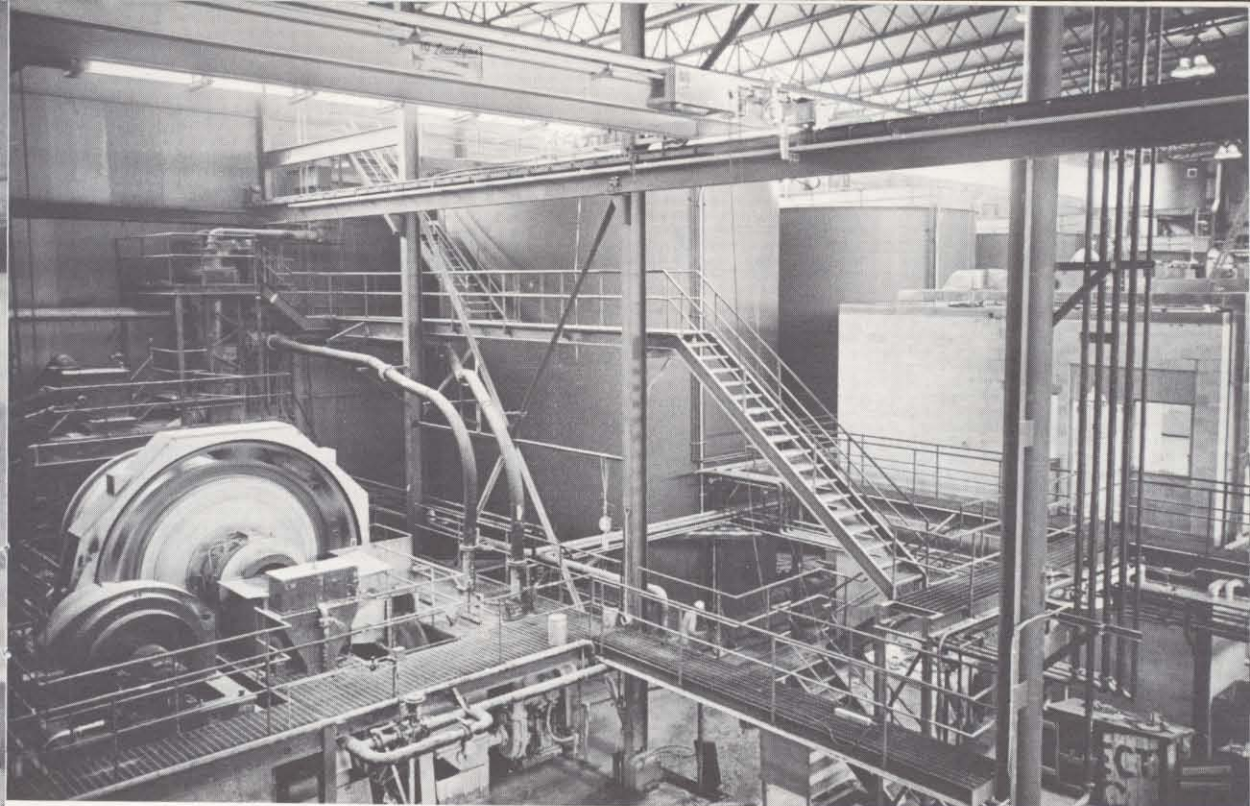
Prior to final gold recovery, gold-bearing solution is passed through clarifying filters until crystal clear. Oxygen is then removed in deaerator and small quantities of zinc dust are introduced, precipitating gold in form of black sludge.

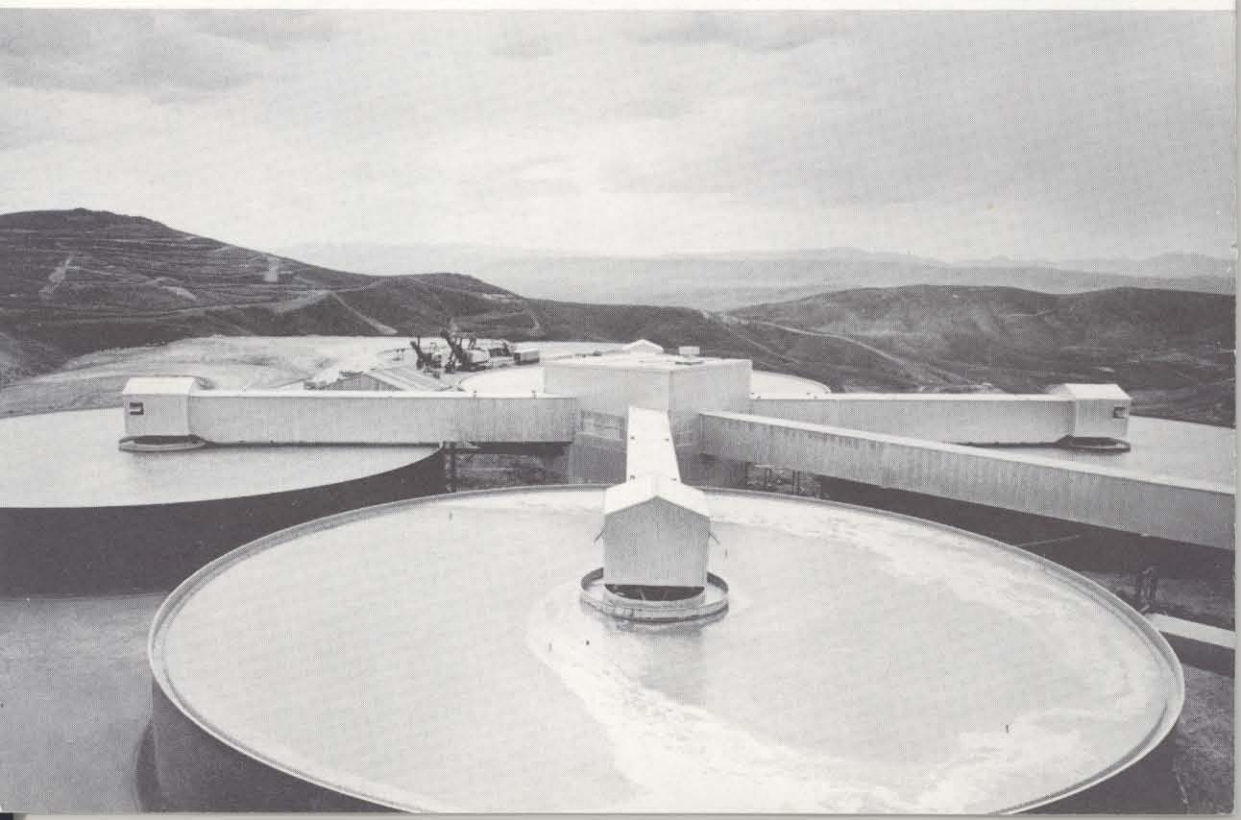
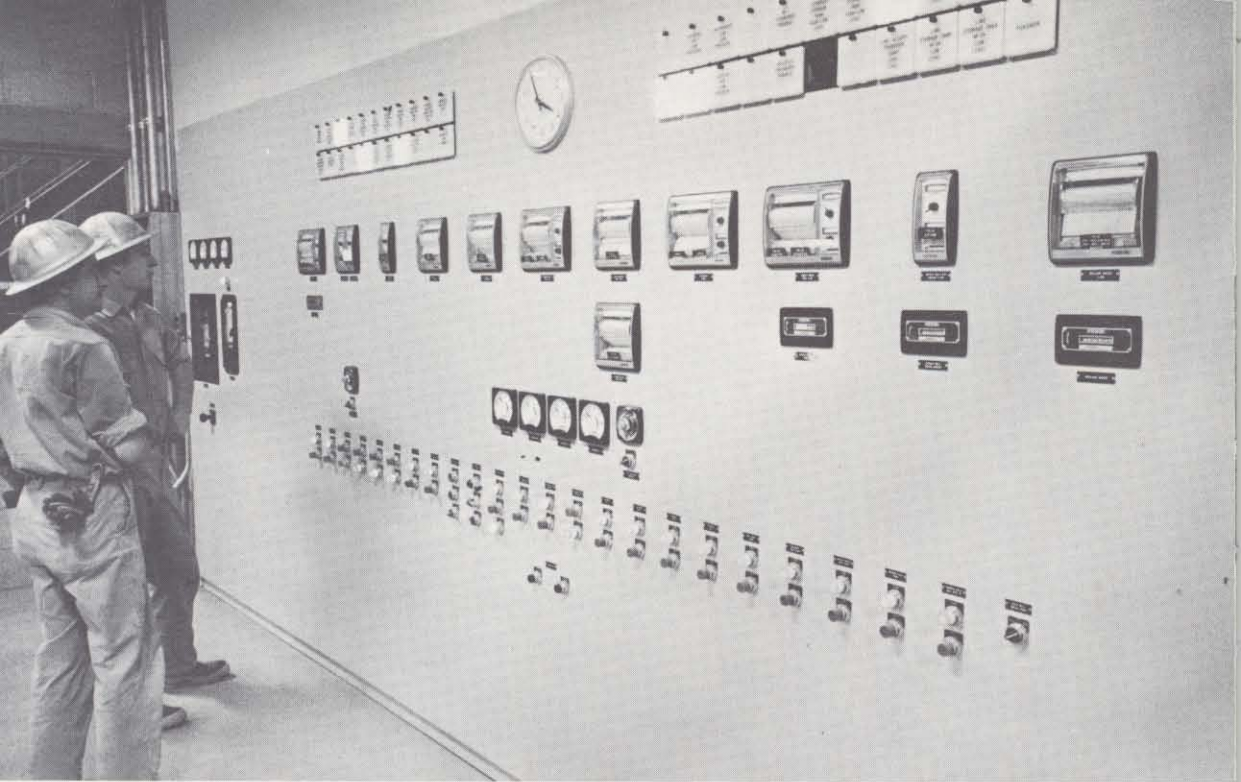
11

Collected in these presses, precipitated gold sludge is removed once a week, mixed with suitable fluxes and melted in small furnace.

Recovery process ends with pouring of molten gold into 1,200-oz. bars. Once bars have cooled, bullion is stored in safe to await shipment to U. S. Mint.

12







The gold mine at Carlin, Nevada, is only one of the many interests of Newmont Mining Corporation throughout the world. The following are the properties in which the Company holds an important interest:

UNITED STATES

Arizona

Magma Copper Company (80% owned)
... *copper*

Louisiana, Texas, New Mexico

Newmont Oil Company (100% owned)
... *oil, natural gas*

Colorado

Idarado Mining Company (80.1% owned)
... *lead, copper, zinc*

Nevada

Carlin Gold Mining Company (100% owned)
... *gold*

New York

Atlantic Cement Company, Inc. (45% owned)
... *cement*

Washington

Dawn Mining Company (51% owned)
... *uranium*

CANADA

British Columbia

Cassiar Asbestos Corporation, Ltd. (16.4% owned)
... *asbestos*
Granduc Mines Limited (45.8% owned)
... *copper*

Alberta and Manitoba

Sheritt Gordon Mines Limited (37.4% owned)
... *nickel, copper, cobalt, nitrogenous fertilizers*

PERU

Southern Peru Corporation (10.25% owned)
... *copper*

PHILIPPINES

Atlas Consolidated Mining & Development Corp.
(14.5% owned)
... *copper*

ALGERIA

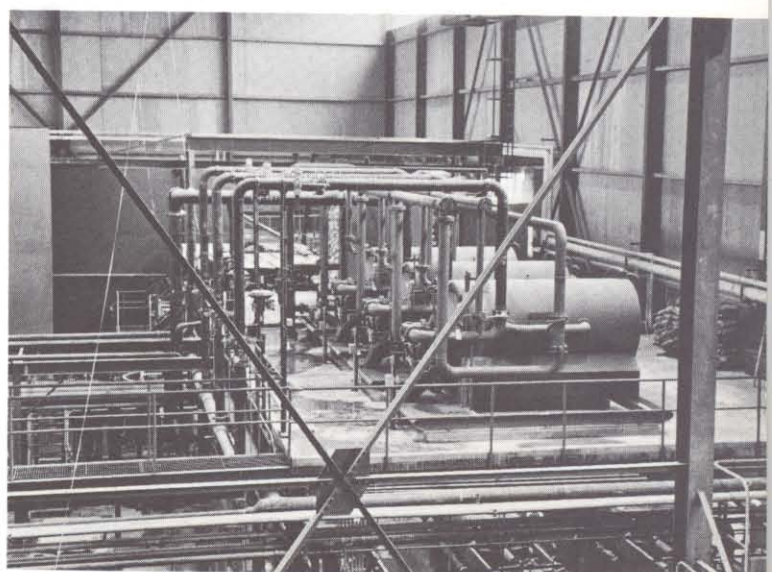
Newmont Overseas Petroleum Co. (100% owned)
... *oil*

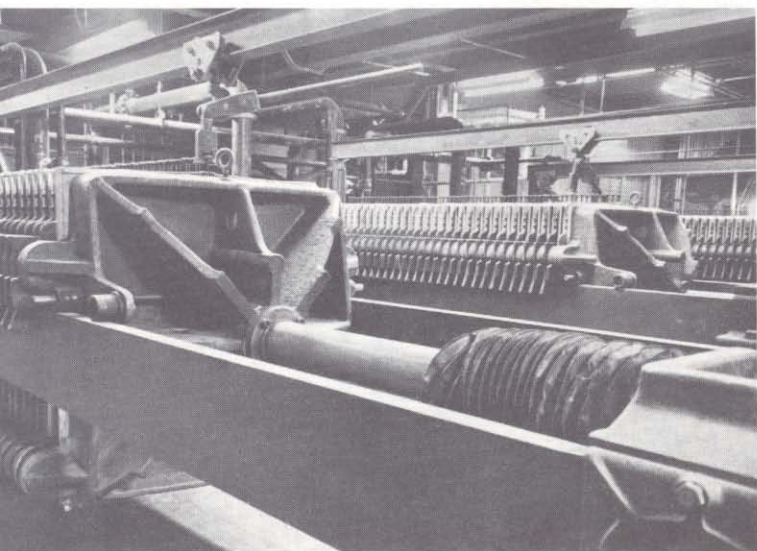
SOUTH WEST AFRICA

Tsumeb Corporation Limited (29.125% owned)
... *lead, copper, zinc*

REPUBLIC OF SOUTH AFRICA

O'okiep Copper Company Limited (57.5% owned)
... *copper*
Palabora Mining Company Limited (28.8% owned)
... *copper, iron ore, sulphuric acid.*







OREGON

IDAHO

Humboldt River

★  CARLIN GOLD MINE

Elko

Reno

★ Carson City

NEVADA

UTAH

Las Vegas

CALIFORNIA

ARIZONA

CARLIN GOLD MINING COMPANY
a subsidiary of

NEWMONT
MINING CORPORATION