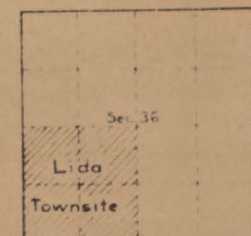


# PLAT OF THE TOWNSITE OF LIDA NEVADA

Embracing the  
SW <sup>4</sup> of Sec. 36  
T. 5 S., R. 40 E., M. D. M.

Scale: 200 feet to 1 inch

Sec. 36, T. 5 S., R. 40 E.



Note: Lida Townsite comprises the whole SW <sup>4</sup> of Sec. 36, only a part of which, however, has been subdivided into lots, blocks, streets, and alleys.

## LEGEND

All Streets, Alleys, Blocks, and Lots are as dimensioned on Plat and monuments at street intersections are indicated by a circle. Streets running easterly are run at an angle of N. 45° 51' E. from the true meridian, and the cross streets at right angles therewith at N. 44° 9' W.

Street intersections are marked on the ground with General Land Office iron survey posts, 2 ins. in diameter with cross on brass cap, posts are 36 ins. long, set 48 ins. in the ground so that brass cap is 12 ins. below the surface of the ground.

Block corners are marked by wooden stakes 2 ins. square, 24 ins. long, set 20 ins. in the ground, scribed with appropriate block number.

Alley corners on block lines are marked by wooden stakes 1 x 1 1/2 ins. 18 ins. long, set 14 ins. in the ground.

Lot corners on block lines are marked by wooden stakes 1 x 1 1/2 ins. 18 ins. long, set 14 ins. in the ground, scribed with the appropriate lot number.

I hereby certify that the above plat of the townsite of Lida, embracing the SW <sup>4</sup> Sec. 36, T. 5 S., R. 40 E., M. D. M., in the State of Nevada, is strictly conformable to the field notes of the survey thereof, executed by Jos. C. Thoma, U. S. Cadastral Engineer and Lemuel R. Mercer, U. S. Transitman, May 13, to 30, 1918, under instructions dated Dec. 4, 1917, on file in this office, which have been examined and approved.

U. S. Surveyor General's Office,

Reno, Nevada,

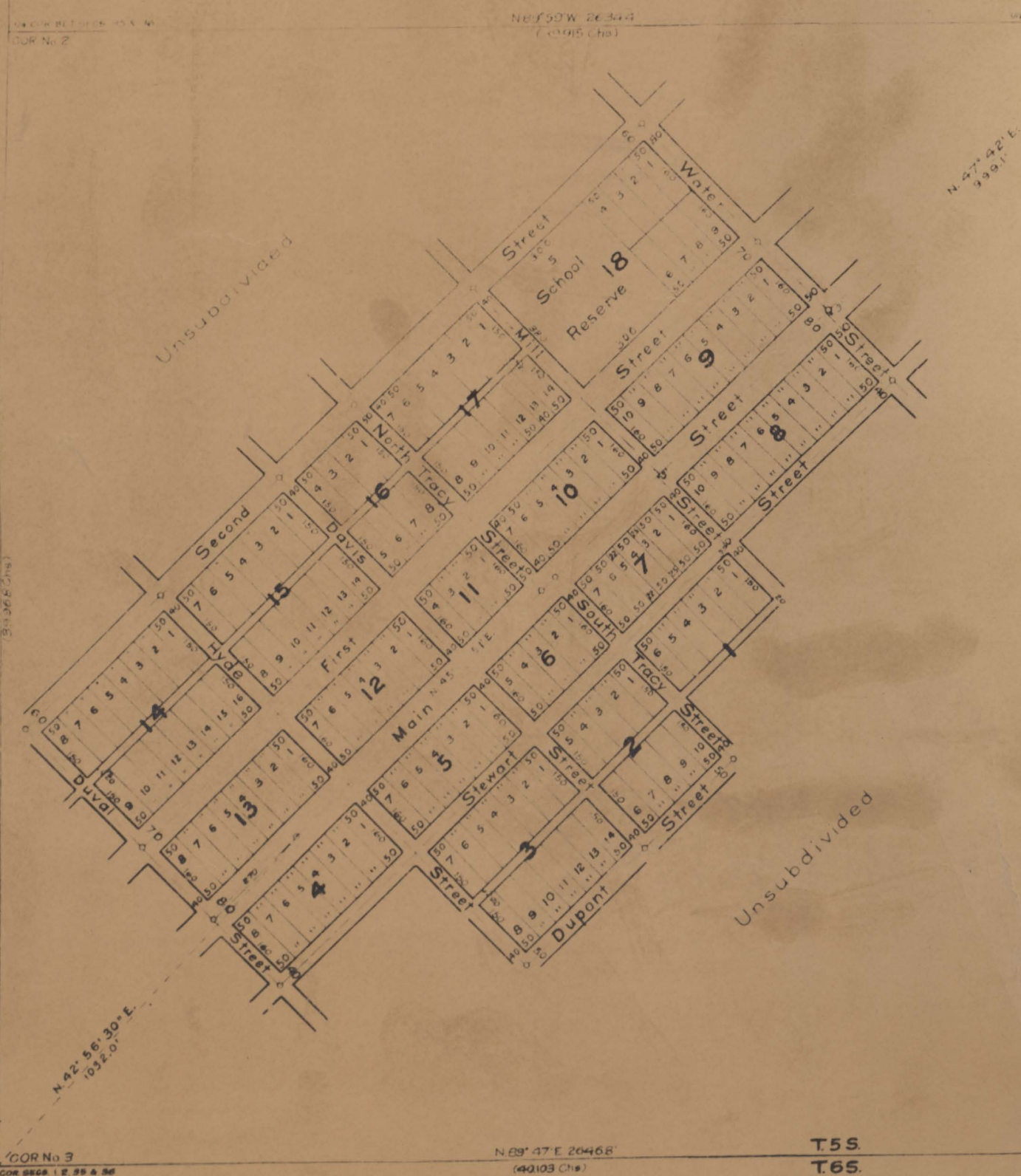
January 30, 1920.

*John B. Sullivan*  
U. S. Surveyor General for Nevada

Note:

Area of all Lots in Blocks 1, 2, 3, 14, 15 and 16 - 7,500 sq. ft.

- Lot 3, Block 7 - 4,000 sq. ft.
- Lot 5, Block 7 - 3,520 "
- Remainder of Lots, Block 7 - 8,000 sq. ft.
- Lots 1 to 6, Block 10 - 8,000 sq. ft.
- Lot 1, Block 10 - 6,400 "
- Lots 7 and 13, Block 11 - 6,000 "
- Remainder of Lots, Block 17 - 7,500 sq. ft.
- Lot 5, Block 18 - 96,000 sq. ft.
- Remainder of Lots, Block 18 - 4,000 sq. ft.



COR No. 3  
COR SEC. 12, 25 & 36

N 89° 47' E 264.68'  
(421.03 Chs)

T. 5 S.  
T. 6 S.

RET. SEC. 1 & 36

N 89° 55' E 261.47'  
(59.617 Chs)

COR SEC. 18, 19 & 36

R. 40 E. R. 41 E.

2810 0061

95