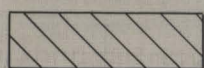
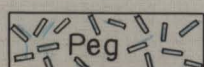


EXPLANATION



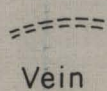
Recrystallized and silicified limestone,
interbedded with quartz-feldspar rock



Pegmatite dike

Contact, approximately located

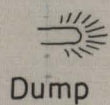
-?-?-?-?
Probable fault



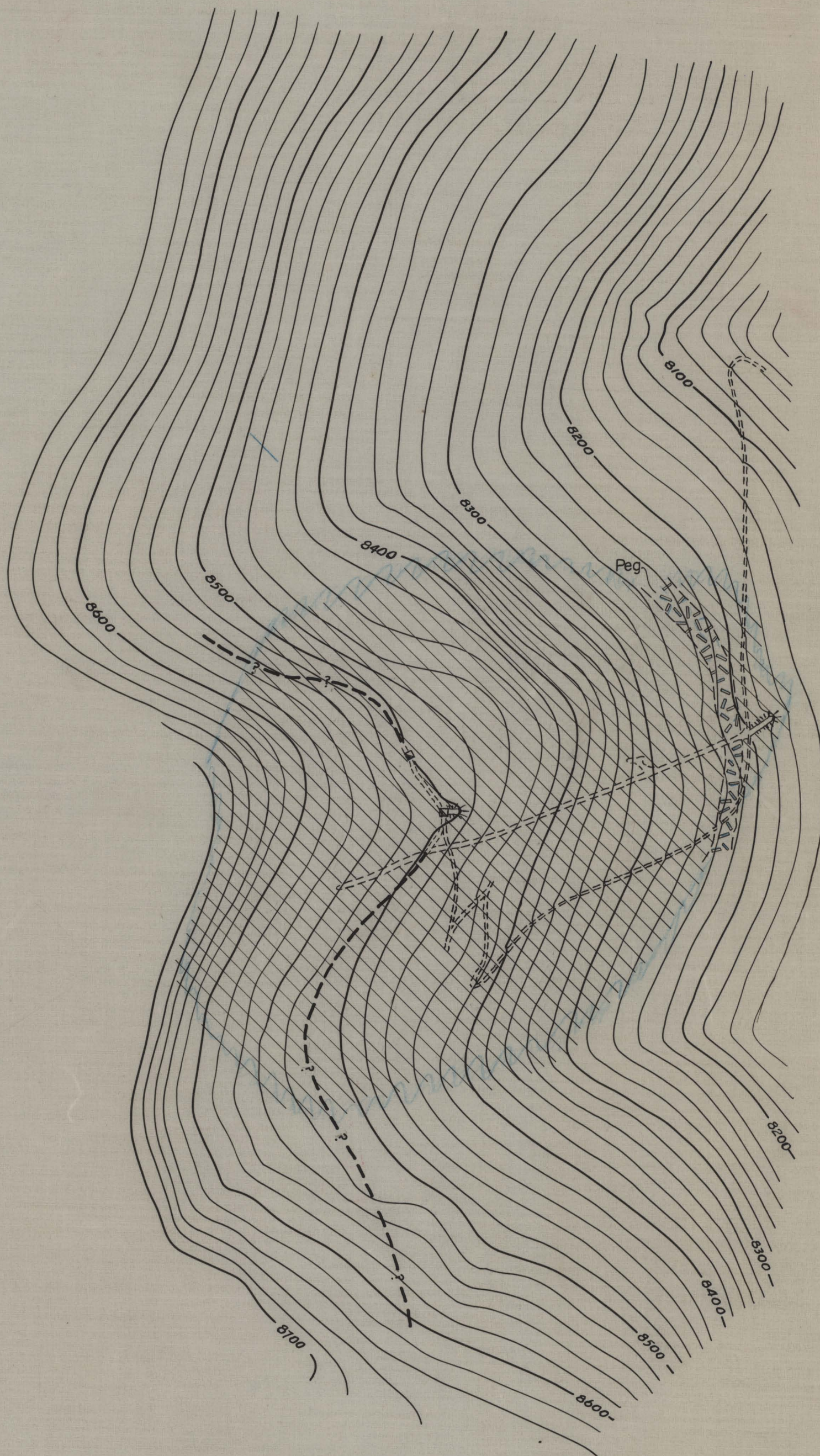
Vein

Portal of adit and underground workings

■
Shaft at surface



Dump



Topography by R. A. Pomeroy & R. G. Reeves

Geology by R. G. Reeves

GEOLOGIC MAP OF THE LONG CANYON MINE
ELKO COUNTY, NEVADA

250 0 250 500 750 1000 feet

Contour interval 20 feet

2740 0007

Item m1 (66)