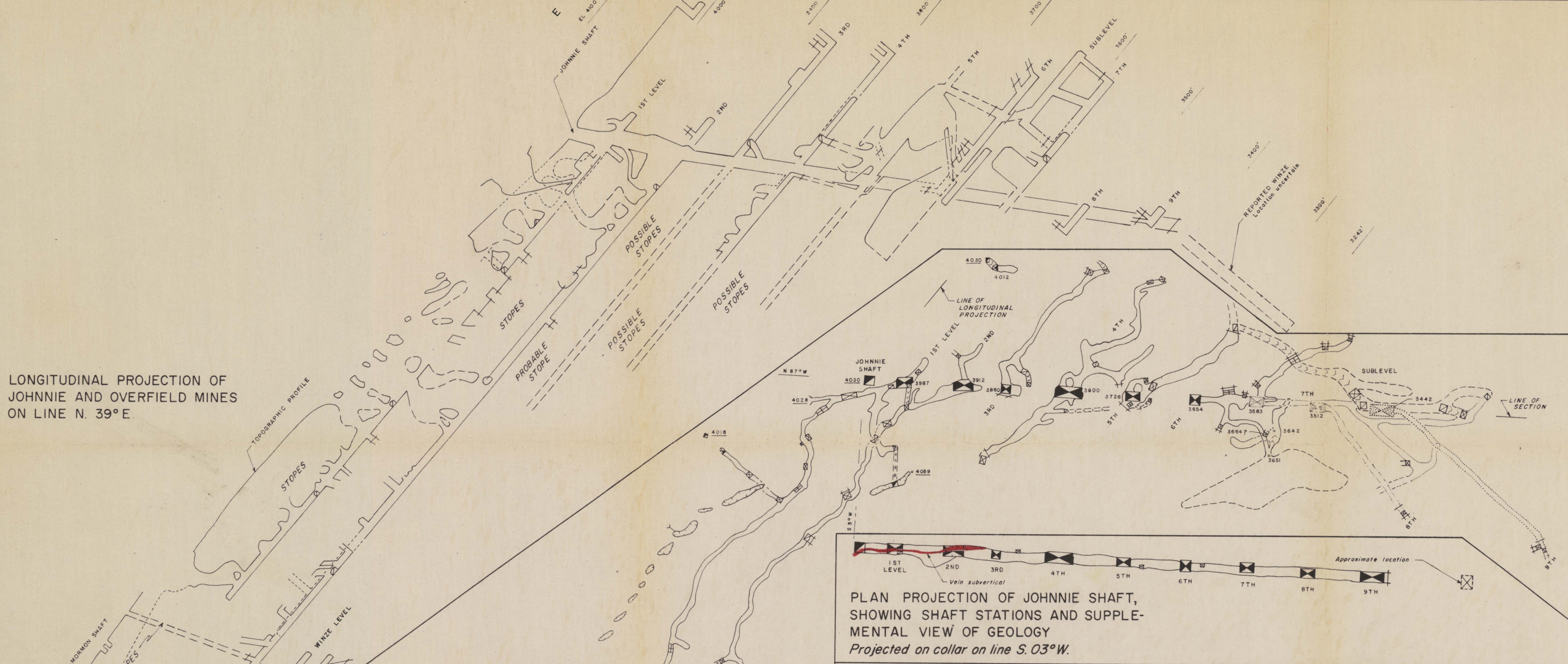
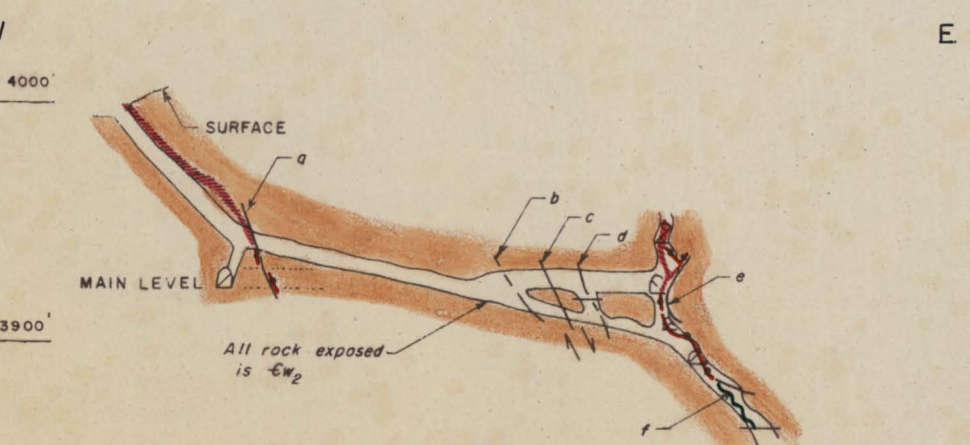


LONGITUDINAL PROJECTION OF
JOHNNIE AND OVERFIELD MINES
ON LINE N. 39° E.

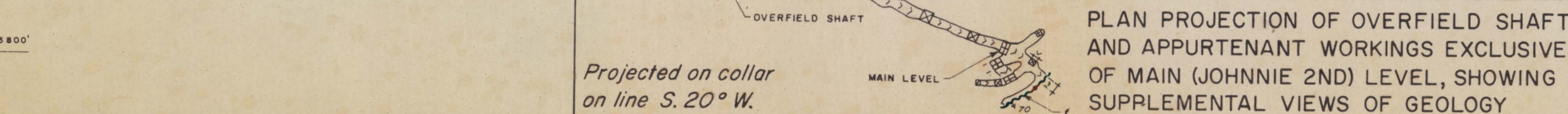


COMPOSITE PLAN PROJECTION
OF LEVEL WORKINGS,
SHOWING SELECTED
INCLINED WORKINGS
For geology see plate 6.

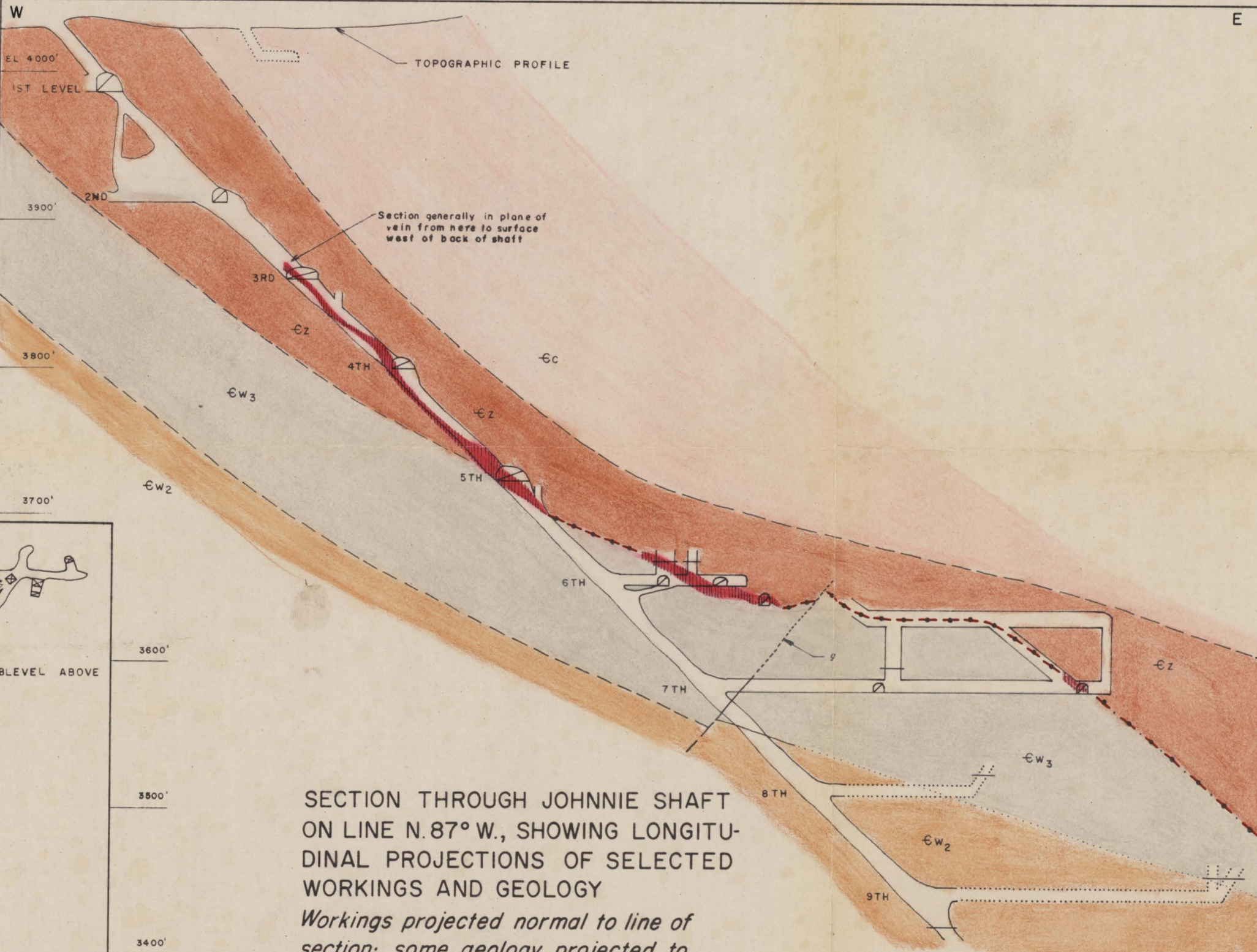
SECTION THROUGH OVERFIELD SHAFT ON
LINE N. 70° W, SHOWING LONGITUDINAL PRO-
JECTION OF PART OF MAIN LEVEL AND GEOLOGY



PLAN PROJECTION OF OVERFIELD SHAFT
AND APPURTENANT WORKINGS EXCLUSIVE
OF MAIN (JOHNNIE 2ND) LEVEL, SHOWING
SUPPLEMENTAL VIEWS OF GEOLOGY



PLAN PROJECTION OF JOHNNIE SHAFT,
SHOWING SHAFT STATIONS AND SUPPLE-
MENTAL VIEW OF GEOLOGY
Projected on collar on line S. 03° W.



SECTION THROUGH JOHNNIE SHAFT
ON LINE N. 87° W, SHOWING LONGITU-
DINAL PROJECTIONS OF SELECTED
WORKINGS AND GEOLOGY
Workings projected normal to line of
section; some geology projected to
section, along strike; geology locally
schematic.

EXPLANATION

- Cc Carrara Formation Unit 1, Appendix A (shale)
- Cz Zabriske Quartzite
- CW3 Wood Canyon Formation Unit 3 (dolomite and shale)
- CW2 Unit 2 (dolomitic rocks)

Contact, approximately located
Dotted where projected to section

Fault, showing relative direction of movement
Dashed where inferred, dotted where projected to section;
letter designates corresponding feature, in geologic plan (pl. 6)

Quartz vein
Broken where inferred, alternates with dots where
projected to section, limits are locally approximately located

Vein of quartz impregnated quartzite breccia and gouge, showing dip
Not differentiated from quartz vein in section through Johnnie shaft

Outline of workings
Dashed where approximately located or inferred, short dashes where hidden by workings nearer
observer, gap where no information, locally cut away to reveal workings away from observer

7th level (plan)

8th level (plan)

9th level (plan)

Inclined workings

Inaccessible workings

4018 3912 ?

Sill elevation of point indicated or of shaft, raise, or winze at sill
Queried where approximate; underlined where at surface

Slope at surface, showing open cut

Portal of adit or slope at surface

Shaft or pit at surface

Shaft extending through a level
Stippled where hidden

Bottom of shaft

Head of raise or winze

Foot of raise or winze

Raise or winze extending through a level

Vertical projection of drift or crosscut
Dotted where hidden

Mapped by S. W. Ivosevic, 1973.
Base from compass-tape survey by S. W. Ivosevic;
1st and 2nd levels adjusted to surface control.
Elevation control estimated from U. S. Geological Survey Mt. Schader, Nevada (75')
topographic quadrangle map, 1968. Datum is collar of Johnnie shaft.
The Johnnie mine is situated in sec. 20, T. 17 S., R. 53 E., M.D.B. and M.
For location see plate 4.

SCALE 1"=60'

100 0 100 200 FEET

JOHNNIE DISTRICT, NYE COUNTY, NEVADA JOHNNIE MINE MAP, SECTIONS, AND LONGITUDINAL PROJECTION OF WORKINGS

Scale 1"=80'
By S. W. Ivosevic 1975

PLATE 5

2580 0034

232 023 - 0335

235 item 2