

MINERAL SURVEY  
No. 4812  
NEVADA

CLAIM OF  
WESTERN ALLOYS INCORPORATED

KNOWN AS THE  
BLACK EAGLE No. 1, BLACK EAGLE No. 2,  
BLACK EAGLE No. 3, BLACK EAGLE No. 4,  
AND BLACK EAGLE No. 5 LODES

SITUATE IN  
Secs. 11 & 14, T. 27 N., R. 40 E., M.D.M.  
PERSHING COUNTY  
Unknown Mining District  
Nevada Land District  
Latitude 40°13' N., Longitude 117°25' W.

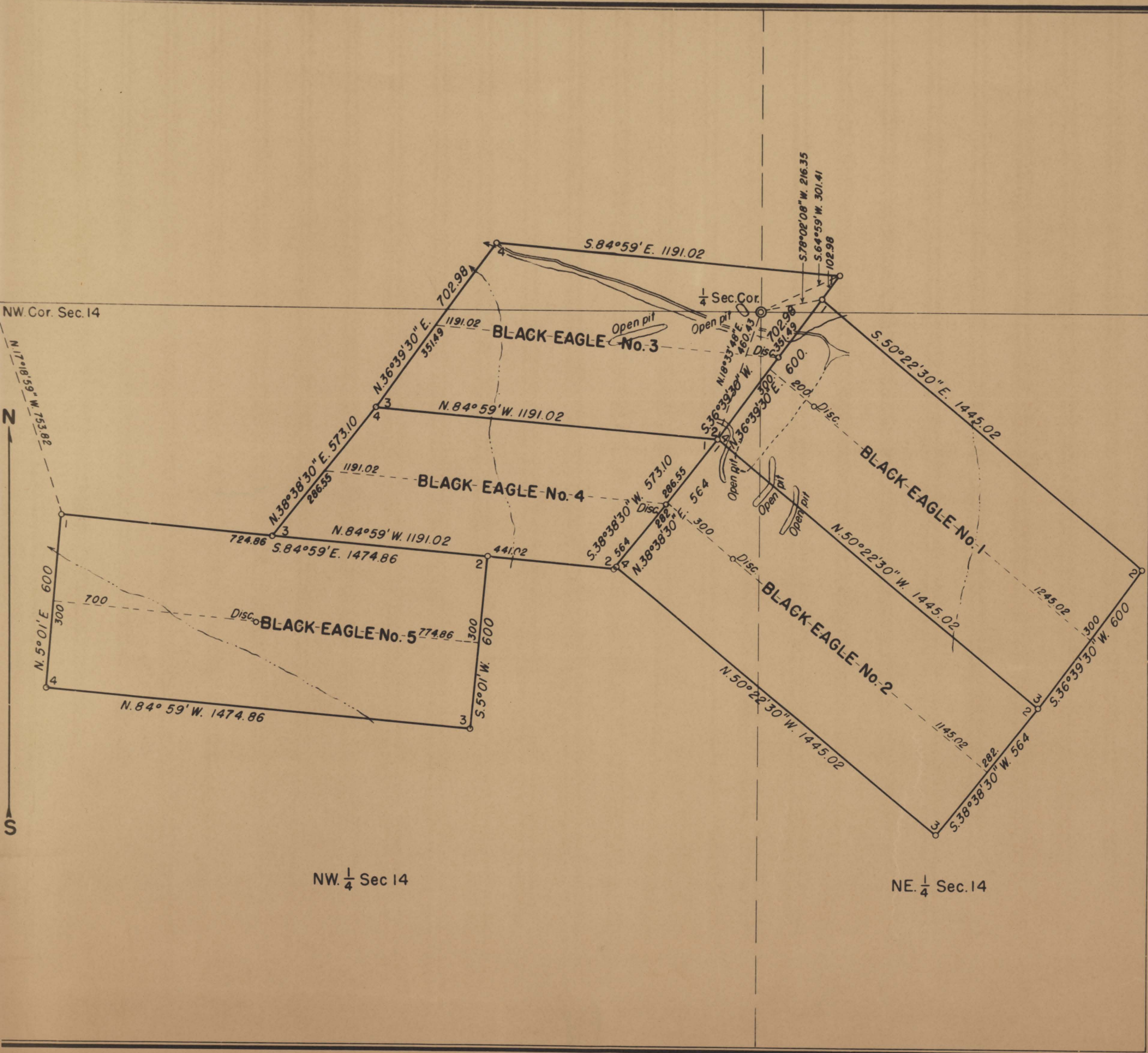
0 50 100 200 300 400 500 600 700 800 900 1000  
Feet  
Magnetic Declination, 18°30' East

Surveyed, Dec. 15 to Dec. 21, 1950,  
By Roger W. Sheridan, Mineral Surveyor.

UNITED STATES DEPARTMENT OF THE INTERIOR  
BUREAU OF LAND MANAGEMENT  
Division of Cadastral Engineering  
Survey Office  
San Francisco, California, FEB 14 1951

I hereby certify that this plat of Mineral Survey  
No. 4812, Nevada, is strictly conformable to  
the field notes of said survey which have been  
examined and approved.

*James W. Hardison*  
Acting Office Cadastral Engineer



2540 0017

279

Item 7