

2390 0003

(9)
Item 4

NW-28-3
Au, Ag, Pb, CaF₂,
Cu, Zn

Mining District: I.X.L.
COX CANYON
(Gold, Silver, Lead, Fluorite, Copper, Zinc)

T. 20-22 N., R. 33-34 E.
Churchill County, Nevada
AMS Reno Map Sheet 1971

GENERAL BACKGROUND

Indicated mineral area NW-28-3 encompasses an area in central Churchill County in Stillwater Range in the immediate vicinity of I. X. L. and Cox Canyon.

The first claims in the I.X.L. District were located in 1878 by Charles Kellogg, who had been involved with Virginia City milling operations. In the early years of the district, numerous claims that carried gold, copper, and silver-lead-zinc were worked, but they never passed from the prospecting stage into a full-scale commercial operation. According to Vanderburg, the district had a total production of only \$20,000 in the time period up to World War II. The most productive claims were in I.X.L. Canyon, which is located about 35 miles north of Frenchman.

The Bonanza group of patented claims is located on the north side of I.X.L. Canyon. Since the late 1870's, the claims have been worked by a number of owners and lessees, with ore production amounting to almost \$20,000. Development on the properties in earlier years consisted of several shallow shafts, an adit 300 feet long and other scattered workings, totaling about 1,500 feet. During recent years, the claims have been idle.

The Black Prince group of patented claims is located in the upper part of I.X.L. Canyon near the crest of the Stillwater Range, several miles west from the mouth of the canyon. The claims were first prospected in the 1880's. Ore production amounted to only several hundred tons, the last of which was produced in 1908. Since that time the claims have not been productive. The development work consisted of a 100 foot adit, several shorter adits, and minor workings, totaling about 500 feet.

The Cox Canyon District was probably first prospected in the late 1870's. A small amount of gold has been recovered by hand-panning.

Over 830 tons of ore containing 75 per cent fluoride has been produced from the revenue group of claims prior to 1951.

Hoke, 1975

GEOLOGICAL AND TECHNICAL DATA

I.X.L. Canyon drains rock formations consisting of granitic intrusions and Triassic slate that contains some interbedded limestone and quartzite. The prospects are situated in the metasedimentary rocks near the intrusive contacts. A prominent fault scarp is visible at the mouth of I.X.L. Canyon.

In the vicinity of the Black Prince group, the formation is mainly limestone with granite intrusives. At the Black Prince adit, mineralization occurs in a contact metamorphic zone, which can be followed at the surface for several hundred yards. The economic minerals included: Chalcopyrite, sphalerite, and galena in a gangue of epidote, quartz, pyrite, garnet, calcite, and magnetite.

At the site of the Bonanza group, silver, gold, and lead ores occurred in calcite and quartz veins within the limestone.

The rocks in the Cox Canyon Area are principally slate and phyllite with interbedded limestone and quartzite. Free gold has been extracted from quartz veins in the metasediments.

At the Revenue Mine, Fluorspar occurs in veins up to 3 feet wide at the contact of calcareous shale and limestone or dolomite.

POTENTIAL FOR DEVELOPMENT

Unless higher grade ores are discovered in these two districts the chances of development in the near future are remote.

COMPANIES AND CLAIMANTS ACTIVE IN AREA

1. CHLORIDE and CHLORIDE #1
Kenneth Bryant
2180 Rice Road
Fallon, Nevada 89406
August, 1974
(lode claims)

SELECTED REFERENCES

1. Vanderburg, 1940, Reconnaissance of mining districts in Churchill County, Nevada.

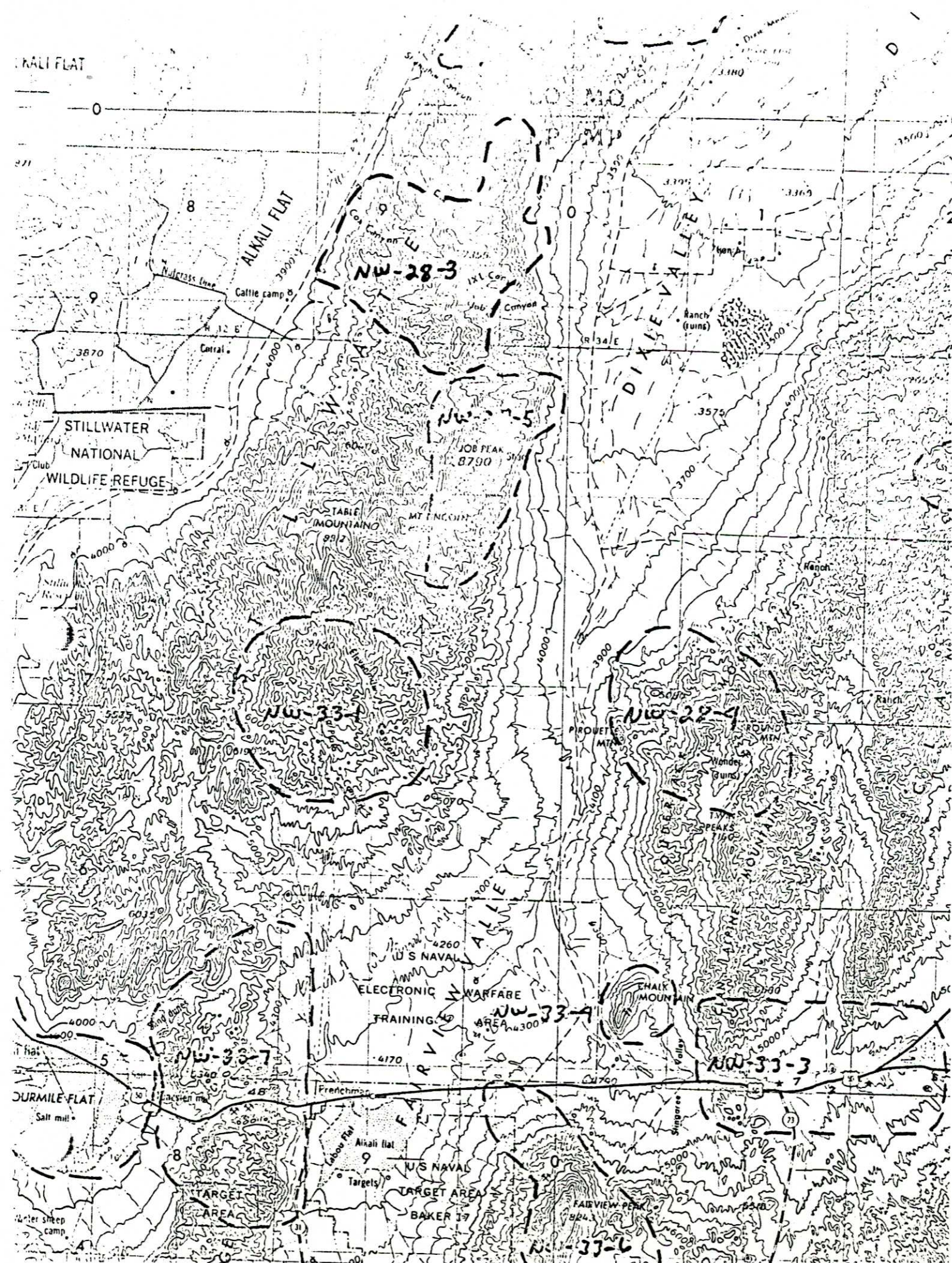
2. Willden and Speed, 1974, Geology and mineral deposits of Churchill County, Nevada.

FIELD EXAMINATION

Hoke, December 1974

Hoke, 1975

221



Taken from:

Mineral Resources Inventory and Analysis
of the

Clan Alpine Planning Unit

Carson City District

by

R. E. Bennett and C. L. Hoke

1975

*for complete introduction
see Churchill Co.-general
files Item 17*