

6000 0120

DISTRICT	Holy Cross
DIST_NO	2330 4 pages 2 maps
TITLE If not obvious	Walker River Reservation, Folder 18, see cover page
COUNTY If different from written on document	Churchill
MULTI_DIST Y / (N?) Additional Dist_Nos:	
QUAD_NAME	
P_M_C_NAME (mine, claim & company names)	Black Eagle North, Occidental Minerals Corporation
COMMODITY If not obvious	N/A

Keep docs at about 250 pages if no oversized maps attached
(for every 1 oversized page (>11x17) with text reduce
the amount of pages by ~25)

SS DD 11/2/07
Initials Date
Scanner: 5/2/08 T.M.
DB TS 3/18/08

See notes on back

FOR GOVERNMENT USE ONLY

PROPRIETARY

REPORT

GROUND MAGNETIC SURVEY
BLACK EAGLE NORTH AREA
CHURCHILL COUNTY, NEVADA

for
Occidental Minerals Corporation
Wheat Ridge, Colorado

by
CHARLES L. ELLIOT
Mining Geophysical Engineer
4653 E. Pima Street
Tucson, Arizona 85716



A ground magnetic survey consisting of two long profile lines was run in the Black Eagle North area, Churchill County, Nevada located approximately in Section 8, T 14 N, R 31 E. This survey was recommended in my report "Interpretation of Airborne Magnetic Data, Walker River Indian Reservation, Mineral, Lyon, and Churchill Counties, Nevada", December 19, 1969. The purpose of the ground survey was to further examine the magnetic feature recognized in the airborne magnetic data over the Walker River Indian Reservation as flown by Aero Service Corporation and recompiled in the fall of 1969 by Lockwood, Kessler & Bartlett, Inc.

The ground survey was performed by John H. Volgamore, Occidental Minerals Corporation, Reno, Nevada using a McPhar Fluxgate Magnetometer, type M-700, as rented from Canadian Aero Mineral Surveys, Ltd., Tucson, Arizona. This system of magnetic measurements measured the vertical field component of the earth's magnetic field.

The two lines surveyed by Volgamore were lines BEN-1 and BEN-2 which were oriented northeast-southwest and were approximately

15,000 feet long. The position of the two survey lines are shown on the attached Plan Map of the Black Eagle North area at a scale of 1 inch = 1000 feet. Also attached to this report is a Ground Magnetic Profile Sheet showing the two magnetic profiles at a scale of 1 inch = 1000 feet and 1 inch = 500 gammas.

The two magnetic profiles are predominantly indicating surface activity without any clear indication of buried intrusive material. Thereby no further attempt in interpretation has been made in that this would not serve any economic exploration purpose. In the previous report on the airborne magnetic data it was suggested that the Black Eagle North magnetic feature was not of probable interest in that it was suggestive of surface volcanic activity. The ground survey confirms this conclusion that the feature is solely due to post ore volcanics at or near surface and therefore this data is of no further economic significance.

Respectfully submitted,

Charles L. Elliot

Charles L. Elliot

Tucson, Arizona
May 16, 1970

Attachment: Ground Magnetic Survey Plan Map
Ground Magnetic Profile Sheet

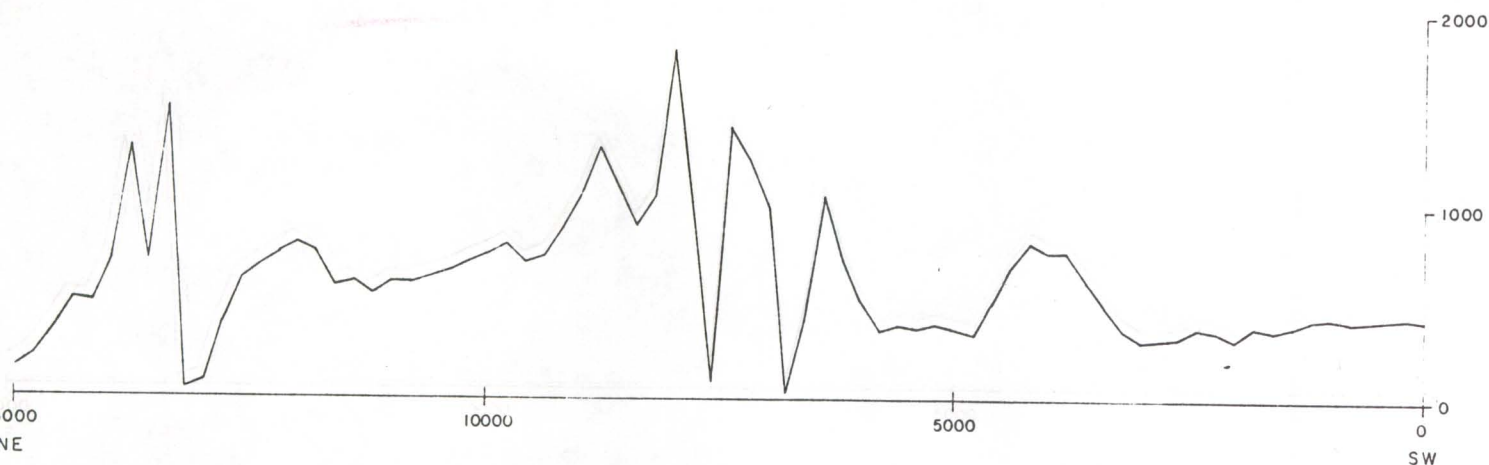
Distribution: James A. Anderson
Arthur R. Still John H. Volgamore

CHARLES L. ELLIOT

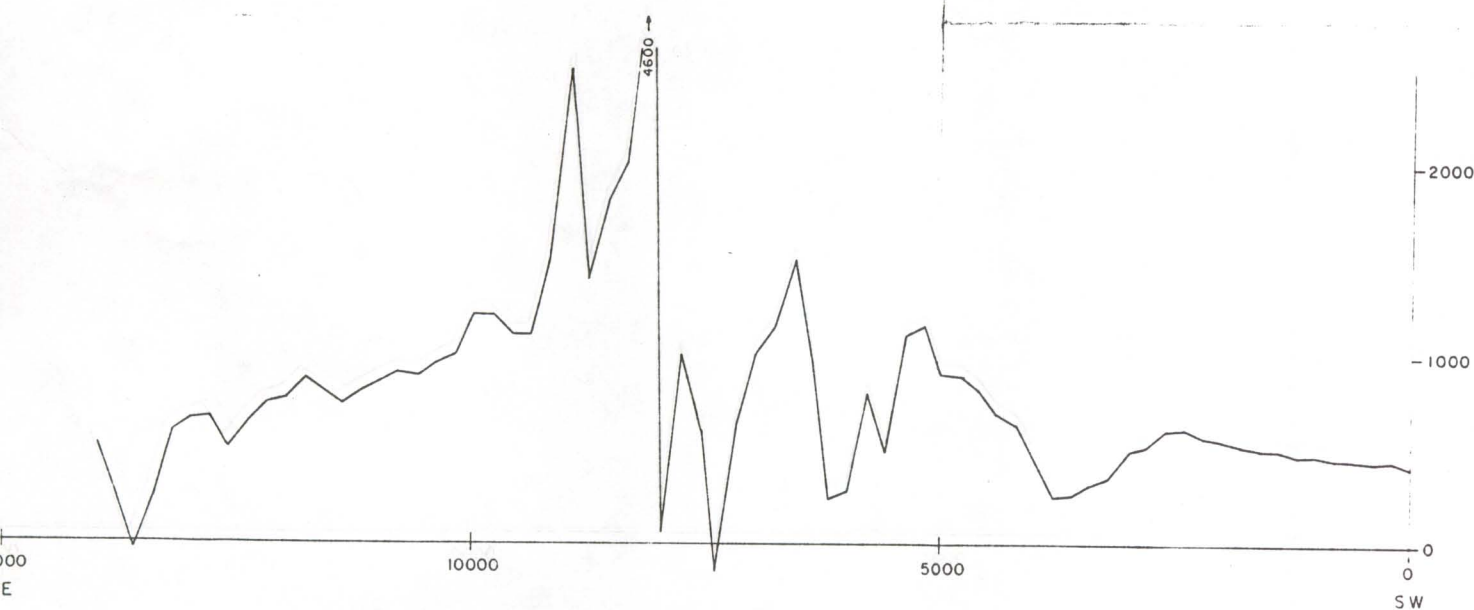
MINING GEOPHYSICAL ENGINEER

TUCSON, ARIZONA

6000 0120 (2330)



Line BEN-2



Line BEN-1

LEGEND

Data run by J.H. Volgamore with
McPhar Fluxgate Magnetometer,
Type M-700

Charles L. Elliot
5-16-70

CHARLES L. ELLIOT
Mining Geophysical Engineer
Tucson, Arizona

GROUND MAGNETIC PROFILES

VERTICAL FIELD

BLACK EAGLE NORTH AREA

CHURCHILL COUNTY, NEVADA

for

OCCIDENTAL MINERALS CORP

WHEAT RIDGE, COLORADO

Horiz. Scale 1" = 1000'

Vert. Scale 1" = 500γ

May 1970

REF. OC9E

#26

6000 0120 (233)

R 30 E | R 31 E

N

T 15 N
T 14 N

6

5

4

3

7

8

9

10

18

17

16

15

19

20

21

Churchill Co.
Mineral Co.



CHARLES L. ELLIOT
Mining Geophysical Engineer
Tucson, Arizona

GROUND MAGNETIC SURVEY
VERTICAL FIELD

BLACK EAGLE NORTH AREA
CHURCHILL COUNTY, NEVADA

for
OCCIDENTAL MINERALS CORP
WHEAT RIDGE, COLORADO

Scale 1" = 1000'

May 1970

REF. OC9E

#26

Line BEN-1
14000 NE

Line BEN-2
15000 NE