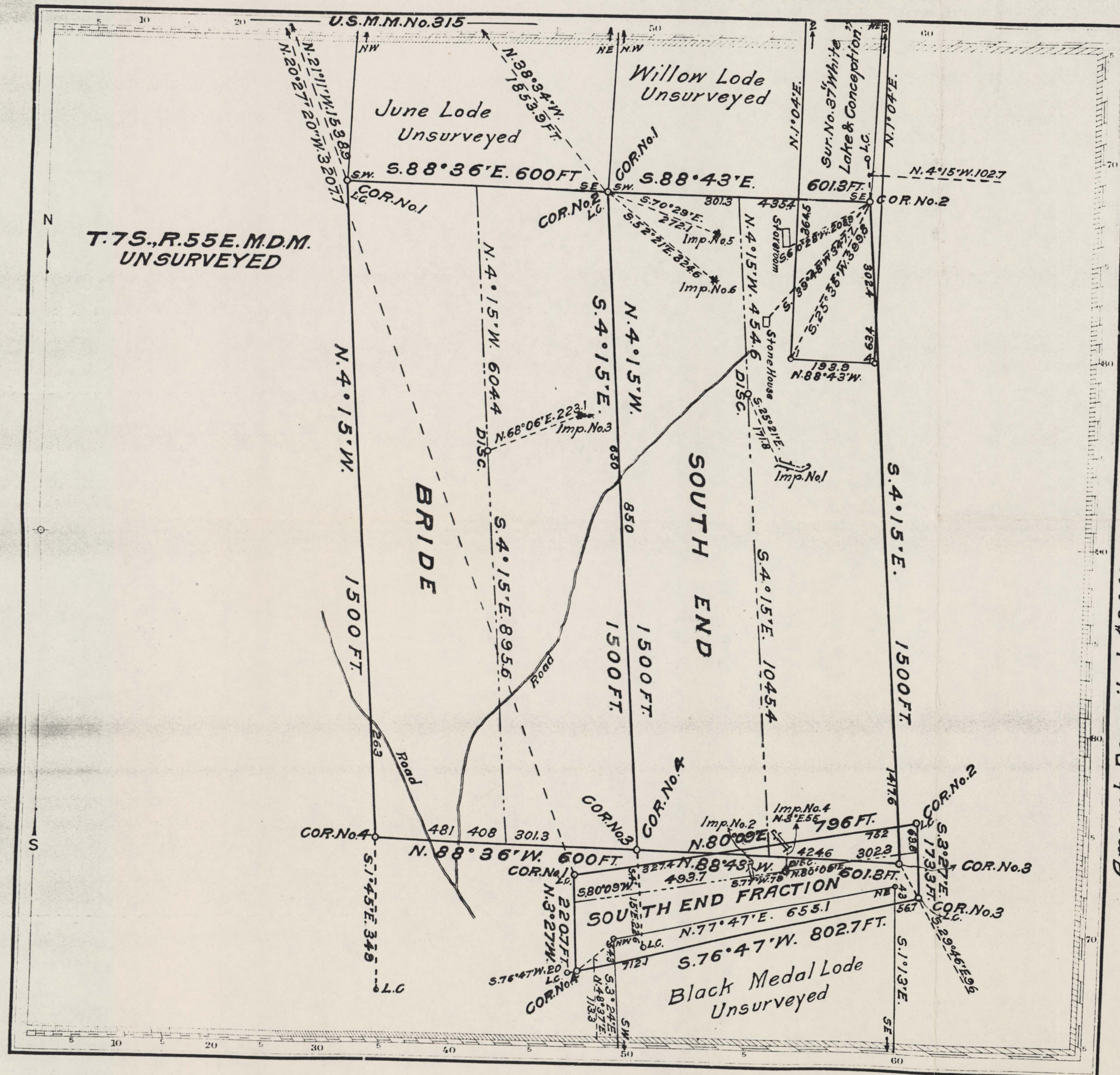


(4-675)

cc. 016684  
Pat. # 1034979  
Feb. 20, 1930



Amount Deposited, \$90.00; Cost of Office Work \$78.58; Refund, \$11.42

South End Located January 30, 1914  
South End Fraction Located Jan. 1, 1917  
Bride Located February 17, 1917  
Mineral Survey No. 4658

Lot No. Carson City Land District.

PLAT

OF THE CLAIM OF

William Armstrong  
KNOWN AS THE

SOUTH END, SOUTH END  
FRACTION AND BRIDE LODES

IN Groom MINING DISTRICT,  
Lincoln COUNTY, Nevada

Containing an Area of Acres.

Scale of 200 Feet to the inch.

Variation 16°45' East  
SURVEYED November 11-13, 1927 BY  
Norman Blye

U.S. Mineral Surveyor

The Original Field Notes of the Survey of the Mining Claim of  
William Armstrong  
Known as the South End, South End  
Fraction and Bride lodes

from which this plat has been made under my direction,  
have been examined and approved, and are on file in this Office,  
and I hereby certify that they furnish such an accurate descrip-  
tion of said Mining Claim as will, if incorporated into a patent,  
serve fully to identify the premises, and that such reference is  
made therein to natural objects or permanent monuments as  
will perpetuate and fix the locus thereof.

I further certify that Five Hundred Dollars worth of labor has  
been expended or improvements made upon said Mining Claim  
by claimant or his graders and that  
said improvements consist of 2 Cuts and Tunnels;  
1 Incline Shaft and 2 Shafts;  
Value \$3224.00

that the location of said improvements is correctly shown  
upon this plat, and that no portion of said labor or improve-  
ments has been included in the estimate of expenditures  
upon any other claim.

And I further certify that this is a correct plat of said Mining  
Claim made in conformity with said original field notes of the  
survey thereof, and the same is hereby approved.

Public Survey Office Ralph W. Nelson  
Reno, Nevada. Office Cadastral Engineer  
January 31, 1928 Nevada.

22400039

204776

170