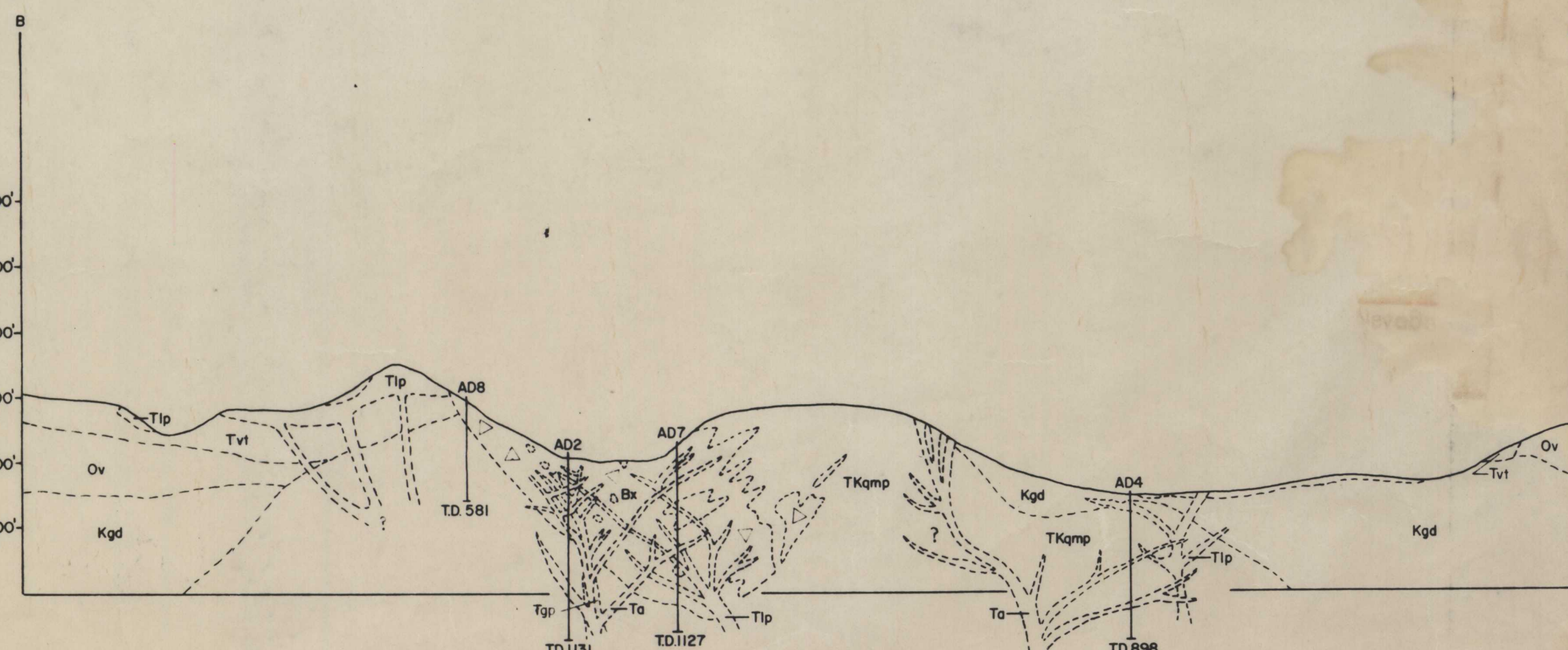
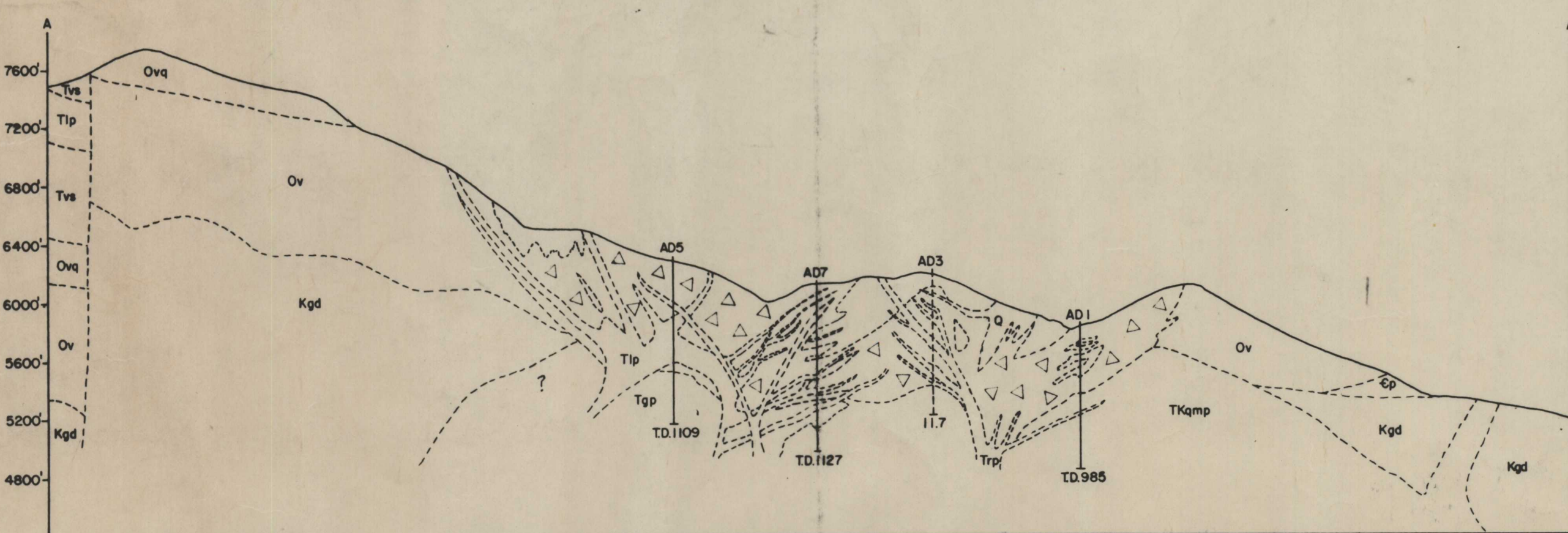




- EXPLANATION**
- RECENT LANDSLIDE DEPOSITS**
- RECENT AND SLIGHTLY OLDER ALLUVIUM, COLLUVIUM AND TALUS**
- MINOR ANGULAR UNCONFORMITY AND FAULTING**
- Ta** - ANDESITE DIKES: DARK TO MEDIUM GRAYISH-GREEN; FINE-GRAINED TO PORPHYRYTIC; CONTAINING 30-50% PLAGIOCLASE, 10-30% K-SPAR AND 10-15% BIOTITE. CHLORITIZED IN PLACES.
- Tvs** - VOLCANICS AND SEDIMENTS UNDIFFERENTIATED. Tt - VOLCANICLASTICS AND GRAVELS. Ttp - LATITE PORPHYRY DIKES, SILLS AND FLOWS. (DATED AT 15 m.y.)
- ANGULAR UNCONFORMITY, EXTENSIVE NORMAL FAULTING**
- Q** - QUARTZ VEINS AND REPLACEMENT ZONES OF MASSIVE QUARTZ
- Ttp** - GRANITE PORPHYRY: LIGHT CREAM TO PINKISH GRAY; MEDIUM- TO COARSE-GRAINED EQUIGRANULAR TO PORPHYRYTIC WITH 5-15% BIOTITE.
- Ttp** - RHYOLITE PORPHYRY: CREAM WHITE TO LIGHT GRAY; FINE-GRAINED, PORPHYRYTIC WITH $\pm 5\%$ BIOTITE. FELDSPAR PHENOCRYSTS RANGE FROM 0.5-2 cm IN LENGTH.
- Tad** - APLITE DIKES: WHITE TO LIGHT GRAY; VERY FINE-GRAINED; SACCHAROIDAL MIXTURE OF QUARTZ AND FELDSPAR WITH LESS THAN 2% MAFICS.
- Ba** - BRECCIA: ANGULAR FRAGMENTS OF VARIOUS SIZES IN A MATRIX OF IGNEOUS ROCK AND MASSIVE QUARTZ.
- Ttp** - FELDSPAR PORPHYRY: LIGHT YELLOW, GREEN OR PURPLE; VERY FINE-GRAINED; CONTAINING 5-10% QUARTZ, 70% FELDSPARS AND UP TO 25% MAFICS. THIS ROCK IS GENERALLY HIGHLY SERICITIZED WITH MINOR HEMATITE.
- ANGULAR UNCONFORMITY**
- TKamp** - QUARTZ MONZONITE PORPHYRY: MEDIUM GREENISH-GRAY; MEDIUM GRAINED; CONTAINING 5-15% QUARTZ, 30-40% PLAGIOCLASE, 15-30% K-SPAR, 5-15% BIOTITE AND $\pm 2-5\%$ HORNBLENDE.
- Kgd** - GRANDODIORITE PORPHYRY: PORPHYRYTIC PHASE OF THE MAIN GRANDODIORITE PLUTON - SIMILAR IN MINERALOGY AND CHEMISTRY.
- Kgd** - GRANDODIORITE: LIGHT GRAY TO GRAYISH BROWN; MEDIUM- TO COARSE-GRAINED EQUIGRANULAR; CONTAINING 5-15% QUARTZ, 30-40% PLAGIOCLASE, 5-10% K-SPAR, 0-15% BIOTITE AND 0-15% HORNBLENDE. (DATED AT 104 m.y.)
- INTRUSIVE CONTACT**
- PK** - KOPATO FORMATION - INCLUDES FLOW BANDED AND SPHERULITIC RHYOLITE (PKr) WITH LESSER ANDESITE (PKa) AND MINOR BRECCIA AND CONGLOMERATE.
- ANGULAR UNCONFORMITY**
- Ph** - HAWALLAH FORMATION: MOSTLY DARK CHERT AND LIGHT BROWN QUARTZITE; WITH LESSER SLATE, CONGLOMERATE AND LIMESTONE.
- CD** - PUMPERNICKEL FORMATION: GREENSTONE, DARK CHERT AND ARGILLITE WITH INTERBEDDED LIMESTONE AND CLASTIC SEDIMENTS, SOME HORNFELSIC.
- GOLCONDA THRUST ZONE**
- Pem** - EDNA MOUNTAIN FORMATION: CALCAREOUS FINE-GRAINED SANDSTONE AND SHALE WITH MINOR INTERBEDDED LIMESTONE.
- ANGULAR UNCONFORMITY, ANTLER OROGENY - ADELAIDE THRUST**
- Ov** - VALMY FORMATION: INTERBEDDED CHERT, QUARTZITE, DARK ARGILLITE AND GREENSTONE. Ov - UNDIFFERENTIATED; Ovq - QUARTZITE MOSTLY AS UPPER-PLATE BLOCKS ABOVE THE GOLCONDA THRUST OVERLYING PREBLE PHYLITE AND VALMY ARGILLITE AND CHERT.
- Ep** - PREBLE FORMATION: GREENISH-GRAY PHYLITIC SHALE AND SLATE WITH INTERCALATED BLuish-GRAY, WELL-BEDDED LIMESTONE.
- ZONE OF BRECCIATION - BOUNDARIES APPROXIMATELY LOCATED**
- CONTACT - DASHED WHERE APPROXIMATELY LOCATED, DOTTED WHERE CONCEALED.**
- STRIKE AND DIP OF STRATA**
- STRIKE AND DIP OF FOLIATION**
- NORMAL FAULT, SHOWING DIP - DASHED WHERE APPROXIMATELY LOCATED, DOTTED WHERE CONCEALED. U, UPHOWN SIDE; D, DOWNTHROWN SIDE.**
- THRUST FAULT, SHOWING DIP - DASHED WHERE APPROXIMATELY LOCATED, DOTTED WHERE CONCEALED. SAWTEETH ON UPPER PLATE.**
- ZONE OF EXTENSIVE QUARTZ VEINING.**
- LIMESTONE BEDS**
- AD-1** - EXISTING DRILL HOLES
- S-1** - PROPOSED DRILL HOLES FOR 1977



GEOLOGIC SECTIONS

2410 0615