

2120 0004

(129)  
item 4

# SUNDOWN GROUP

*see also map files  
(4 maps)*

## LOCATED

In Sections 21, 22, and 23, Tw 34 N, Rg 40 E, Humboldt  
County, Nevada. Some 12 miles South from Golconda, Nev.

## LOOKING SOUTHEAST



VIEWED FROM SPACE  
BY LYNCH RAYMOND

2000 06 01 1000

VIC 314  
1000 06 01 1000

## TUNGSTEN PROSPECT

### REFERENCE

Plats located in pocket in back of this Folder.

### GEOLOGY

Granite-lime, metamorphic contact. Contact has been traced over a linear distance of 6,000 feet. Strike trends East-West. Dip of limestone beds at the surface is 60 degrees South.

### MINERALIZATION

Predominately scheelite associated with tactite.

### EXPLORATION

*Tidwell*  
Seventeen-drill holes. Most of the holes were drilled to establish dip of the contact and location. Also to establish the existence of indicated minor cross faulting along the contact. One hole ( 3 ) drilled to establish some indication of the strength of the mineralizing solutions and continuity of the dip of the limestone.

Five holes intersected the contact. Six holes drilled limestone only. Six holes drilled granite only.

### FUTURE

Drilling will be continued in the Spring of 1972 after the severe freezing and snow conditions are over. The initial work will be centered around hole no. 10, as this hole showed ore grade.

Surface dozier work will be carried out on the surface showing in Section 23. If this work proves fruitful it will be followed with drilling.

Surface dozier work will also be conducted on the scheelite showing on the West end of Claim Sundown 3.

Also, at least one stratigraphic hole is projected for the approximate center of Section 21.

John R. Wilcox

801 EAST TYLER STREET  
ATHENS, TEXAS 75751

TEL: 675-3686  
A/C 214

PROPOSAL

Principal's who control this prospect and are conducting the present exploration program are not organized to develop a prospect to production and have no desire to do so. Their organization is limited in personnel and not adequate to conduct a mining feasibility program. Principal's organized for the purpose of locating prospects, establishing good title to the ground and to conduct preliminary exploration hopefully to the point that a commercial ore body was indicated or to the point that continued and further exploration was warranted.

Principal's believe the Sundown Group warrants further exploration and is beyond the preliminary stage, and consequently would like to have a substantial Mining Concern take over the prospect.

Principal's are seeking only exploration by qualified Concerns that could put the property into production should an ore body be found.

No cash is asked, with the right to surrender or determine efforts at any time. An outline of proposed efforts coupled to Performance in Time would be the expected basis of any agreement.

Principal's would expect to recover their costs and receive any gain from ore production, if any were produced. Principal's would entertain an agreement predicated on Joint Venture, royalties on marketed minerals, some combination of the two, or any other proposal.

It is intended that only one Concern at any one time be extended this proposal.

The writer has full authority to conclude any agreement and may be contacted in addition to the above at:

Box 563

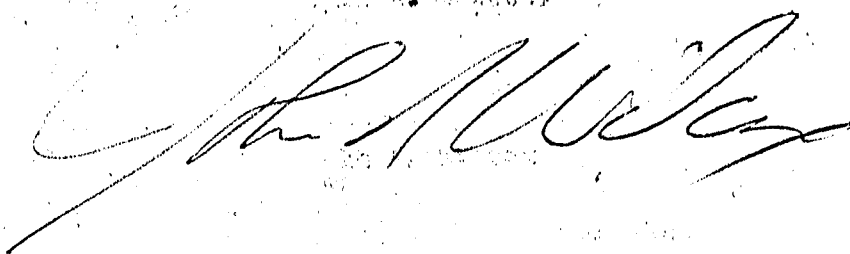
Winnemucca, Nevada 89445

or

Hotel Humboldt

Winnemucca, Nevada 89445

November 22, 1971



# DRILL HOLE DATA

Point of control is the cabin as indicated on the map. Hole locations were made by compass bearing and distance from the cabin. Cabin elevation is assumed to be zero for control purposes.

Sample markings: P is for Prospect. H is for hole. Number following H is the greatest depth of the sample and if not otherwise indicated represents a distance of 5 feet.

Hole	Location	Elev.	Angle	Column
3	E 18°S 130'	5	Vert.	0-102 lime.
4	S 39°E 126'	18	Vert.	0-10 Surface. 10-15 granite.
5	E 33°S 200'	15	60°S3°W	0-50 lime.
6	S 18°W 85'	18	Vert.	0-15 Surface. 15-25 granite
7	E 33°S 200'	15	Vert.	0-40 lime.
8	E 18°S 200'	18	Vert.	0-63 lime. 63-75 granite.
9	E 33°S 150'	10	Vert.	0-30 surface and granite.
10	E 29°S 202'	15	56°W2°S	0-50 lime. 50-58 granite.
11	S 14°W 166'	35	Vert.	0-32 lime. trace granite.
13	E 24°S 202'	15	67°W32°N	0-43 lime.
14	E 2°N 231'	15	60°S37°W	0-110 granite.
15	E 12°S 208'	18	65°N28°E	0-29 lime. 29-45 granite.
16	S 8°E 170'	35	Vert.	0-79 lime. 79-115 granite.
17	W 3°N 700'	0	Vert.	0-55 lime.
Holes numbered 18 and above located by bearing and distance from no. 17.				
18	W 100'	0	Vert.	0-65 lime.
19	E 27°N 80'	-40	45°W37°S	0-163 granite.
20	E 18°S 100'	-25	Vert.	0-33 lime. 33-43 granite.

*cont. below.*

## Notes:

Holes no. 17 and 18 were discontinued as air drill could not get them deeper. It is planned to re-enter these holes with water circulation equipment and intersect the contact.

Hole 11 was discontinued as air drill could not keep hole from caving.

Hole 3 was discontinued as projected intersection of contact was expected to be too deep. However, the hole was located for purposes of basic geology.

Anticipated drilling in the Spring of 1972 will be concentrated around hole no. 10 and no. 17.

Surface trenching is planned for a strong showing in Sec. 23.

Hole	Loc.	Elev.	Angle	
21	S 39°E 126'	18	45°E20°S	0-55 granite 55-82 Tschite
22	✓	✓	55°E30°S	0-104 ✓
23	S 26°E 180'	30	45°E	0-106" Lime Tschite @ 65'

SKYLINE LABS, INC.

SPECIALISTS IN GEOCHEMICAL EXPLORATION

12090 WEST 50TH PLACE • WHEAT RIDGE, COLORADO 80033 • TEL.: (303) 424-7718

REPORT OF ANALYSIS

Job No. 39026

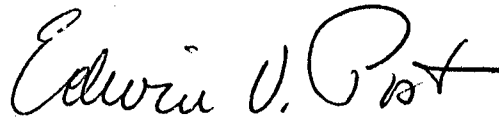
May 12, 1972

John R. Wilcox  
801 East Tyler  
Athens, Texas 75751

2 Rock Chip Samples

Item	Sample No.	W (ppm)
1.	P23-GI	1,050
2.	P4-W-GI	5,750

cc: Darreld L. Butts

*for*   
Charles E. Thompson  
Chief Chemist

# SKYLINE LABS, INC.

SPECIALISTS IN GEOCHEMICAL EXPLORATION

12090 WEST 50TH PLACE • WHEAT RIDGE, COLORADO 80033 • TEL.: (303) 424-7718

## REPORT OF ANALYSIS

Job No. 39027  
May 22, 1972

Mr. John R. Wilcox  
801 East Tyler  
Athens, Texas 75751

### 17 Drill Cutting Samples

Item	Sample Number	WO <sub>3</sub> (%)	Mo (%)
1.	P 4-H-23 65-70	.0028	*
2.	70-75	.0028	*
3.	75-80	.10	*
4.	80-85	.027	.0040
5.	85-90	.015	*
6.	90-95	.091	*
7.	95-100	.11	*
8.	100-105	.034	*
9.	105-110	.035	*
10.	P 4-H-23 110-114	.034	*
11.	P 4-H-21 55-59	.0085	*
12.	59-63	.40	*
13.	63-67	.34	*
14.	67-71	.088	*
15.	71-75	.054	*
16.	75-79	.017	*
17.	P 4-H-21 79-82	.012	*

\*Analysis not requested

*Edwin C. Post*  
for Charles E. Thompson  
Chief Chemist

## SKYLINE LABS, INC.

SPECIALISTS IN GEOCHEMICAL EXPLORATION

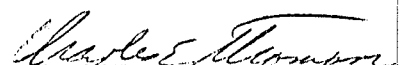
12090 WEST 50TH PLACE • WHEAT RIDGE, COLORADO 80033 • TEL.: (303) 424-7718

REPORT OF ANALYSISJob No. 39019  
September 2, 1971Mr. John R. Wilcox  
801 East Tyler  
Athens, Texas 75751

20 Drill cutting samples

Item	Sample No.	Mo (ppm)	W (ppm)
1.P4 H3 -102		8	*
2.P4 H8 -25		20	40
3.P4 H7 -10		6	22
4.	15	16	80
5.	20	210	1,250 (-150 WO <sub>3</sub> )
6.	25	125	790
7.	30	16	190
8.	35	8	28
9.P4 H7 -40		8	40
10.P4 H10-10		4	16
11.	15	12	55
12.	20	16	75
13.	25	45	230
14.	30	65	700
15.	35	600	4,400 (-1528 WO <sub>3</sub> )
16.	39	230	1,600
17.	45	230	1,100
18.	50	170	850
19.	53	115	750
20.P4 H10-58		36	280

\*Analysis not requested.

  
 Charles E. Thompson  
 Chief Chemist

# SKYLINE LABS, INC.

SPECIALISTS IN GEOCHEMICAL EXPLORATION

12090 WEST 50TH PLACE • WHEAT RIDGE, COLORADO 80033 • TEL.: (303) 424-7718

## REPORT OF ANALYSIS

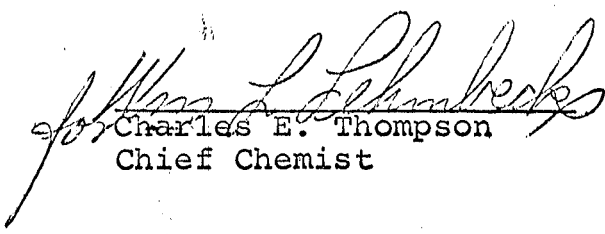
Job No. 39020  
October 21, 1971

Mr. John R. Wilcox  
801 East Tyler  
Athens, Texas 75751

15 Drill cutting samples

Item	Sample No.			Mo (ppm)	W (ppm)
1.	10-1-71	P4-H13	25-30'	210	550
2.	10-1-71	P4-H13	30-35'	125	600
3.	10-1-71	P4-H13	35-40'	38	130
4.	10-2-71	P4-H14	60-65'	5	22
5.	10-2-71	P4-H14	105-110'	4	27
6.	10-4-71	P4-H15	15-20'	9	13
7.	10-4-71	P4-H15	25-30'	30	78
8.	10-4-71	P4-H15	30-35'	6	40
9.	10-4-71	P4-H15	40-45'	6	46
10.	10-5-71	P4-H8	31-35'	13	39
11.	10-5-71	P4-H8	45-50'	60	140
12.	10-5-71	P4-H8	55-58'	95	120
13.	10-6-71*	P4-H8	at 71'	3	5
14.	10-6-71	P4-H8	71-75'	4	10
15.	10-7-71	P4-H16	50-55'	5	33

\* Clean sample

  
Charles E. Thompson  
Chief Chemist

cc. John R. Wilcox  
Winnemucca, Nevada



SKYLINE LABS, INC.

SPECIALISTS IN GEOCHEMICAL EXPLORATION

12090 WEST 50TH PLACE • WHEAT RIDGE, COLORADO 80033 • TEL.: (303) 424-7718

REPORT OF ANALYSIS


Job No. 39022  
November 12, 1971

Mr. John R. Wilcox  
801 East Tyler  
Athens, Texas 75751

Analysis of 19 Drill cutting samples

Item	Sample No.			W (ppm)	Mo (ppm)
1.	P4	H 8	35-40	210	*
2.	P4	H 8	40-45	330	*
3.	P4	H 8	58-63	25	*
4.	P4	H16	65-70	70	*
5.	P4	H16	70-72	18	*
6.	P4	H17	20-25	250	*
7.	P4	H17	25-30	130	*
8.	P4	H17	45-50	160	*
9.	P4	H17	50-55	100	*
10.	P4	H18	10-15	450	*
11.	P4	H18	25-30	60	*
12.	P4	H18	40-45	22	*
13.	P4	H18	60-65	16	*
14.	P4	H19	95-100	20	<2
15.	P4	H19	155-160	6	3
16.	P4	H20	20-25	560	*
17.	P4	H20	25-28	630	*
18.	P4	H20	28-33	50	*
19.	P4	H20	33-38	130	*

\* Analysis not requested.

  
Charles E. Thompson  
Chief Chemist

SKYLINE LABS, INC.

SPECIALISTS IN GEOCHEMICAL EXPLORATION

12090 WEST 50TH PLACE • WHEAT RIDGE, COLORADO 80033 • TEL.: (303) 424-7718

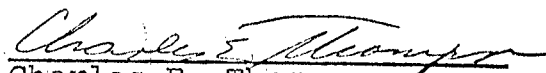
REPORT OF ANALYSIS

Job No. 39017  
July 30, 1971

Mr. John R. Wilcox  
801 East Tyler  
Athens, Texas 75751

8 Drill cutting samples

Item	Sample No.	Mo (ppm)	W (ppm)
1.	P4 H4-20	4.	10.
2.	H5-10	26.	4.
3.	H5-15	19.	26.
4.	H5-20	16.	47.
5.	H5-25	38.	160.
6.	H5-30	28.	100.
7.	H6-20	4.	5.
8.	P4 H6-25	2.	4.

  
Charles E. Thompson  
Chief Chemist

cc. John R. Wilcox  
Winnemucca, Nevada

3

SKYLINE LABS, INC.

SPECIALISTS IN GEOCHEMICAL EXPLORATION

12090 WEST 50TH PLACE • WHEAT RIDGE, COLORADO 80033 • TEL.: (303) 424-7718


REPORT OF ANALYSIS

Job No. 39018  
August 16, 1971

Mr. John R. Wilcox  
801 East Tyler Street  
Athens, Texas 75751

1 Drill core and 1 drill cutting sample

Item	Sample No.	Cu (ppm)	Mo (ppm)	W (ppm)
1.	P4 H5 -50	30	6	12
2.	P4 H3 -93	30	110	10

  
Charles E. Thompson  
Chief Chemist

cc: John R. Wilcox,  
Winnemucca, Nevada

SKYLINE LABS, INC.

SPECIALISTS IN GEOCHEMICAL EXPLORATION

12090 WEST 50TH PLACE • WHEAT RIDGE, COLORADO 80033 • TEL.: (303) 424-7718


REPORT OF ANALYSIS

Job No. 39021  
October 21, 1971

Mr. John R. Wilcox  
801 East Tyler Street  
Athens, Texas 75751

Analysis of 5 Pulp samples

Item	Sample No.	Mo (ppm)	W (ppm)
1.	P4-H16 72-75'	10	175
2.	P4-H16 75-80'	5	70
3.	P4-H16 80-85'	3	15
4.	P4-H16 95-100'	3	14
5.	P4-H16 115-119'	4	17

  
Charles E. Thompson  
Chief Chemist

cc. John R. Wilcox  
Winnemucca, Nevada

SKYLINE LABS, INC.

SPECIALISTS IN GEOCHEMICAL EXPLORATION

12090 WEST 50TH PLACE • WHEAT RIDGE, COLORADO 80033 • TEL.: (303) 424-7718

REPORT OF SPECTROGRAPHIC ANALYSIS

Job No. 39021  
October 25, 1971

John R. Wilcox  
801 East Tyler Street  
Athens, Texas 75751

Values reported in parts per million, except where noted otherwise, to the nearest number in the series 1, 1.5, 2, 3, 5, 7 etc.


---

Element	P4-H16-80(75-80)
---------	------------------

---

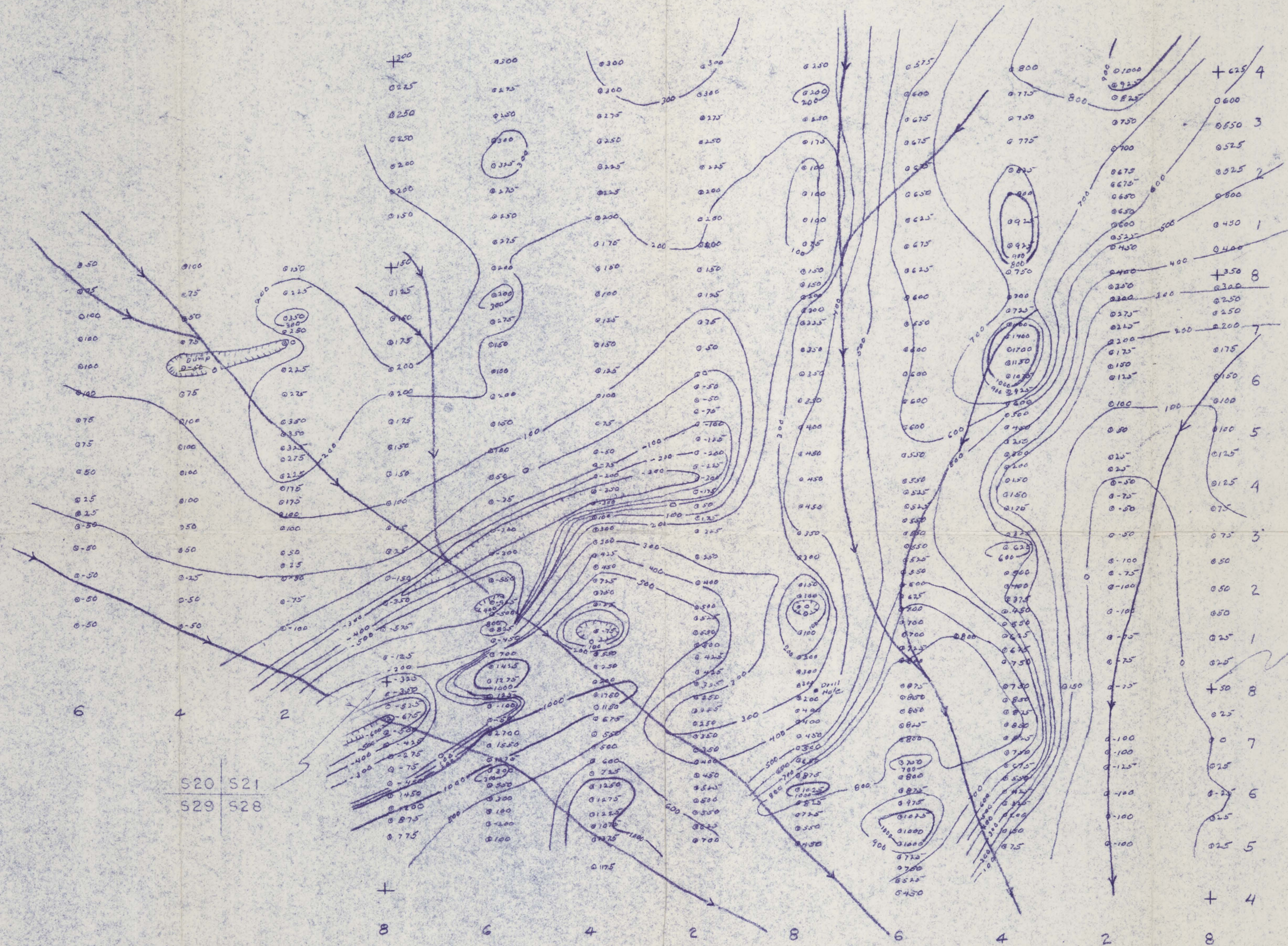
Fe	1%
Ca	5%
Mg	.7%
Ag	1
As	<500
B	20
Ba	1,000
Be	<2
Bi	<10
Cd	<50
Co	20
Cr	200
Cu	30
Ga	10
Ge	<20
La	100
Mn	500
Mo	<2
Nb	20
Ni	30
Pb	200
Sb	<100
Sc	10
Sn	<10
Sr	1500
Ti	2000
V	100
W	100
Y	20
Zn	<200
Zr	200

cc: John R. Wilcox

  
Charles E. Thompson  
Chief Chemist



R 40E



TFF GROUP  
HUMBOLDT COUNTY, NEVADA  
T34N R40E  
GROUND MAGNETICS  
150 magnetic readings  
100 gamma contour  
scale 1" = 500'

0 500 1000 ft.

032 013 0101

HJT. 5-27-72

2120 0004

129 Tom 4