

92

Item 5

2110 0005

REPORT ON
THE B & M PROPERTY
HORNSILVER, ESMERALDA COUNTY,
NEVADA.

Examined March 7th, 1920

Reported March 20th, 1920.

By A. F. Capper.

REPORT ON
THE B & M PROPERTY
HORNSILVER, ESMERALDA COUNTY, NEVADA.

LOCATION.

The B. & M Property consists of five claims located four miles south east of Hornsilver, Esmeralda county, Nevada.

GEOLOGY AND ORE OCCURRENCE.

The geology on and surrounding this property is rather complicated consisting of lime, shale and granite porphyry intrusions, which are in more or less of a mixed up condition.

On the B. & M claim where most of the work has been done on this property, there are three quartz veins all in the granite porphyry. These veins strike about north 40° west and dip to the south. On the property to the north there are at least two veins one in the porphyry and one in the shale. On the vein in the shale there has been sunk several shafts the deepest being about 200 feet deep. There are also several small cuts and tunnels. On the property to the south-east there are numerous small shafts sunk on the lime Granite porphyry contact. All of the dumps have more or less ore piled on them.

WORKINGS.

The workings consist of an incline shaft eighty eight feet deep on the dip of the vein 32° to the south. Two drifts at the fifty five foot level. One east ninety nine feet and one west ninety three feet. Besides the shaft there are several small tunnels, cuts and trenches.

EQUIPMENT.

There is no equipment on the property.

PRODUCTION.

They claim to have shipped some very good ore from the shaft to the smelter, by way of Stonewall Station, fourteen miles distant on the Tonopah and Tidewater Railroad.

(2)

SAMPLES.

No.	Oz. Gold	OZ. Silver	Value	Description
9	.12	53.28	\$71.66	Cut across 3.2 ft. west side bottom of shaft. 88 ft deep.
10	Tr.	1.50	1.95	Cut across 4.9 ft. south side east drift. Shaft plus 4 ft.
11	Tr.	.30	.39	Cut across 4.4 ft. north side east drift. Shaft plus 21 ft.
12	Tr.	.40	.52	Cut across 3.1 ft. north side east drift. Shaft plus 42 ft.
13	Tr.	.20	.26	Cut across 4.7 ft. south side east drift. Shaft plus 82 ft.
14	Tr.	.40	.52	Cut across 4.0 ft north corner face east drift. Shaft plus 99 ft.
15	Tr.	2.20	2.86	Cut across 4.6 ft. face of short cross cut west drift, Shaft plus ten feet.
16	Tr.	1.20	1.56	Cut across 2.3 ft. north side west drift. Shaft plus 27 ft.
17	Tr.	.60	.78	Cut across 3.7 ft. south side west drift. Shaft plus 48 ft.
18	Tr.	.60	.78	Cut across 4.5 ft. south side west drift. Shaft plus 68 ft.
19	Tr.	.90	1.17	Cut across 3.3 ft. south side west drift. Shaft plus 90 ft. Face minus 3 ft.
20	Tr.	1.70	2.21	Cut across 2.6 ft. Face of small stope west of shaft 21 ft. below surface.
21	.12	15.58	22.65	Grab of dump. 15 tons. All ore.
22	.52	23.18	40.53	Grab of 2 to 3 tons sorted ore.
23	.72	36.68	62.08	Grab from 500 pounds sorted ore from cut on parallel vein 250 feet south west of shaft.

CONCLUSIONS.

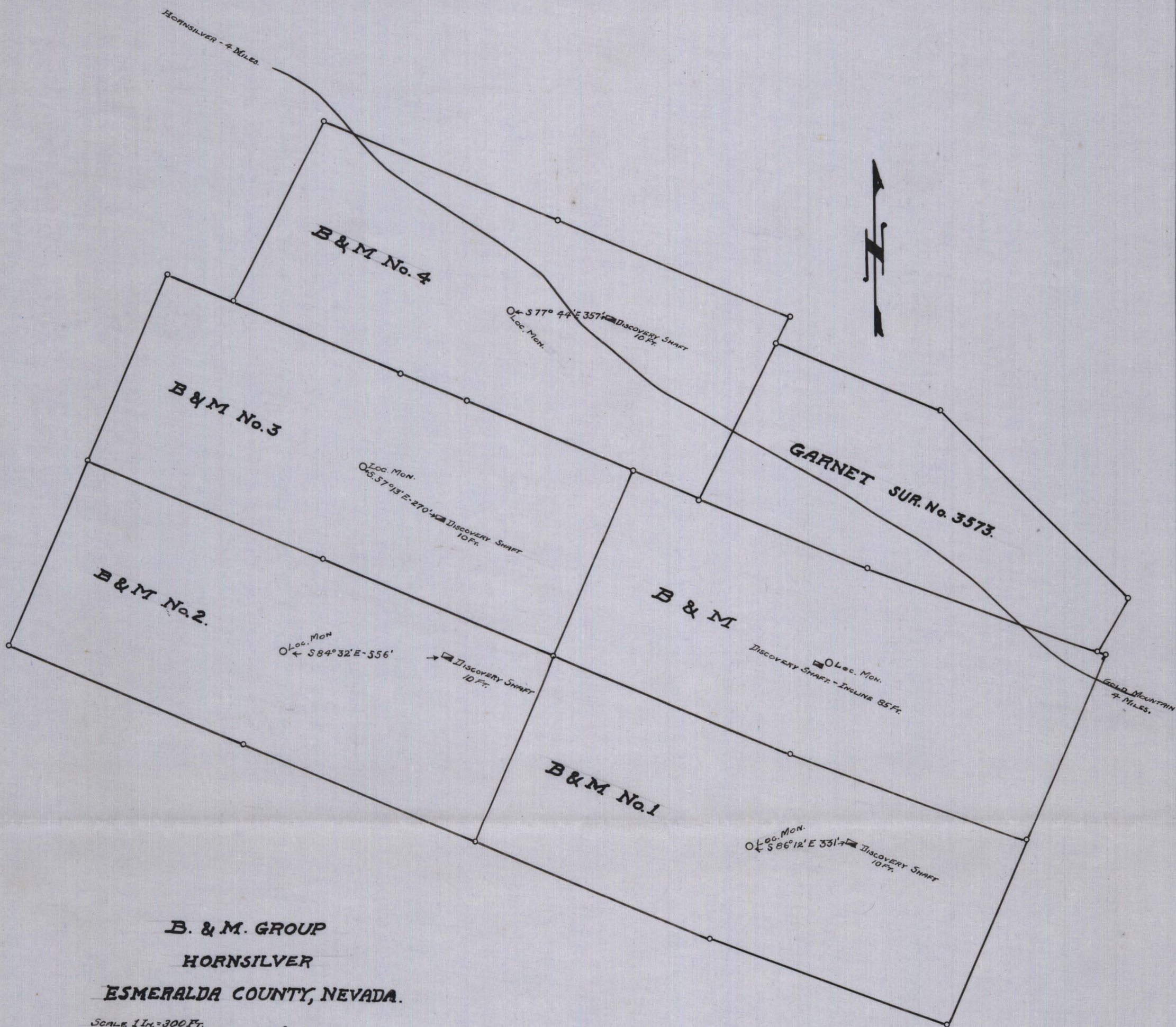
Owing to the very low samples obtained from the drifts, this property is not worthy of further consideration.

Respectfully submitted,

Examined March 7th, 1920

Reported March 20th, 1920.

A. J. Carpenter



92 item 5

2110 0005