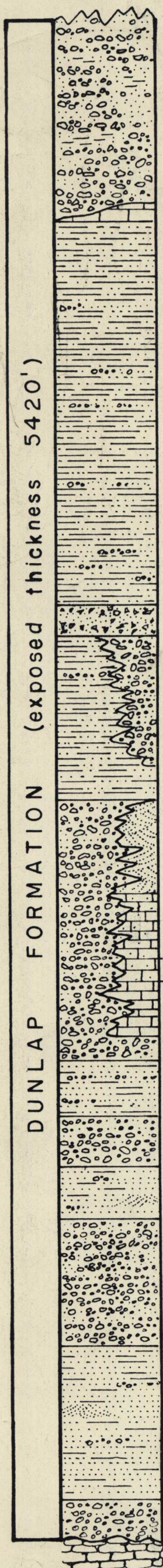


Thickness  
in feet

851



650

Top: thrust contact with the Luning Formation

Conglomerate and sedimentary breccia; chert and limestone pebble, maroon, brick-red; very thickly bedded and massive; poorly sorted with sandy and silty matrix. A few interbeds of red siltstone and fine-grained brick-red tuffaceous sandstone. Scour and fill structure on lower surface.

70

Limestone, calcareous, gray, massive, fine-grained.

1370

Silty shale, siltstone and fine-grained sandstone, buff to maroon and brick-red, thinly parted and thinly bedded, tuffaceous, current structures scour and fill structures, graded beds, mud flakes. A few thin beds of silty limestone. A few lenses of chert pebble and granule conglomerate.

100

Tuff, maroon, gray massive, crystal-rich, rhyolitic.

0 - 900

Conglomerate and sedimentary breccia; chert and limestone pebbles, gravel and cobbles; maroon to brick-red; very thick massive beds, poorly sorted; limestone pebbles near base. A few interbeds of red sandstone and siltstone.

100 - 500

Siltstone, shale and fine-grained sandstone, maroon, brick-red, thinly parted, thinly bedded, well bedded, current structures, graded beds, tuffaceous. Interfingers with conglomerate and sedimentary breccia.

0 - 300

Pure quartz sandstone, light buff, medium-grained, massive locally cross-bedded.

0 - 600

Sandy limestone and limestone, calcareous, light buff to gray, very thickly bedded and massive. Limestone and sandstone are locally eroded and detritus included in conglomerate.

80 - 920

Sedimentary breccia; chert, limestone and quartzite pebbles and cobbles, maroon, poorly sorted with sand-silt matrix, faintly bedded, very thick massive beds.

200

Quartz sandstone, buff, pink, medium-grained, medium to thick beds.

180

Subordinate beds of brick-red siltstone and lenses of chert granule and pebble conglomerate.

180

Sedimentary breccia, chert pebble, maroon, red, very thick massive beds. Quartz sandstone, buff, cream and pink, well sorted, medium-grained, very thick massive beds, locally cross-bedded. A few lenses of chert pebble conglomerate and brick-red siltstone.

480

Sedimentary breccia, chert pebble and cobble, maroon, poorly sorted with silt-sand matrix, massive.

650

Quartz sandstone, buff, cream and pink, medium- to coarse-grained, well sorted, faintly bedded, very thick massive beds. Locally cross-bedded.

130

Conglomerate and sedimentary breccia, chert pebble and cobble, maroon and green, poorly sorted with sand-silt matrix, very thick massive beds. Base: Unconformable upon Excelsior Formation.

Section measured near the head of Dunlap Canyon, about 1½ miles northwest of Pilot Peak, central Pilot Mountains, T. 6 N., R. 36 E.

1940 0052