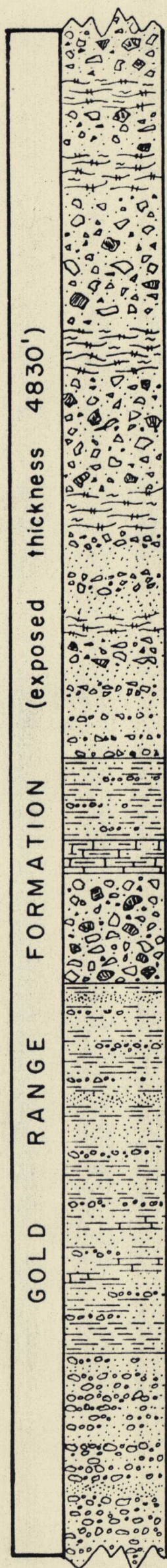


Thickness
in feet

Top not exposed



2300

Rhyolitic rocks: tuff-breccia, ignimbrites and lavas; rhyodacite, rhyolite and dacite composition, rhyodacite is most common; light to dark gray; massive; well indurated, recrystallized and devitrified to hornfelsic texture; massive units. Ignimbrites show compressed pumice lapilli, welded glass shard texture, accretionary lapilli. A few massive beds of gray, well indurated sedimentary breccia and conglomerate containing rhyolite and rhyodacite pumice fragments, and chert pebbles and cobbles.

260

Siltstone and silty shale, gray to dark gray, fine-grained, thinly bedded, recrystallized to chert-like rock with hornfelsic texture. Subordinate interbedded tuffaceous sandstone, well sorted, medium to thick beds, graded beds, cross bedding, scour and fill structures. A few beds of chert pebble conglomerate

100

Calc-silicate hornfels and skarn, mottled green-gray, contains epidote, diopside, garnet and carbonate. Subordinate interbeds of dark gray argillite. Probably was originally siliceous limestone.

350

Pyroxene andesite tuff-breccia, dark gray-green, massive, coarse cobble and blocky breccia, poorly sorted. A few rounded pillow-like structures present.

1170

Quartzite and argillite; white, green-gray maroon; well indurated and recrystallized to chert-like rock; very thickly bedded. A few quartzite beds show cross-bedding. A few beds of maroon siltstone. Calc-silicate hornfels with interbedded gray siliceous hornfels and quartzite are present near the base; probably derived from impure argillaceous and sandy limestone. A few beds of chert pebble conglomerate.

650

Sedimentary breccia and conglomerate; chert pebbles and cobbles, greenish-gray, poorly sorted, massive to very faintly bedded, very thickly bedded. A few interbeds of green, fine-grained silty sandstone and beds of cross-laminated quartz sandstone. Massive sandstone bed 500 feet below top.

Base not exposed; In fault contact with Excelsior Formation

Section measured in Telephone Canyon, from mouth upstream to the Telephone Canyon fault, western Pilot Mountains, T. 6 N., R. 35 E.