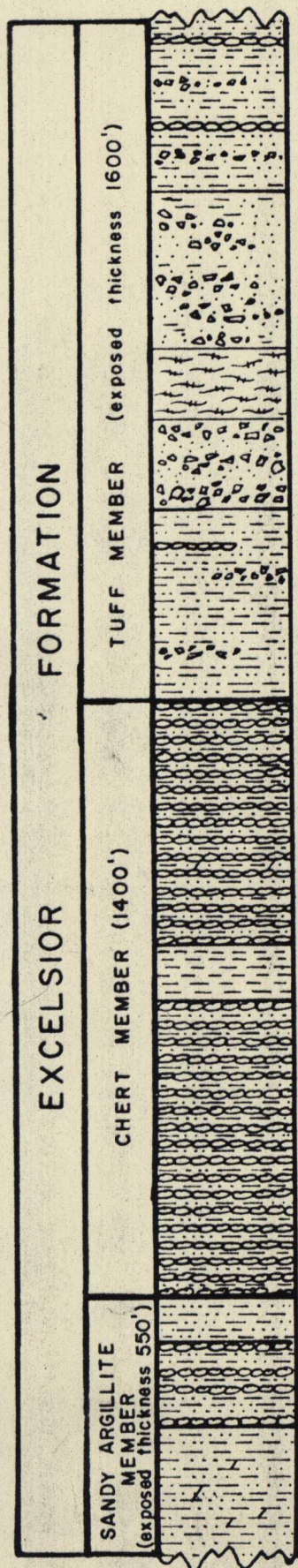


Section L. Excelsior Formation

Re Triassic  
Pe Permian

Thickness  
in feet



400	Top not exposed Sandy- and tuffaceous argillite, olive gray and brown, very thick massive beds with very thin uneven partings, highly fractured. Thick gray and brown interbeds of chert. A few massive tuff and tuff-breccia interbeds.
750	Andesite tuff and fine lapilli tuff-breccia, dark gray and brown, massive to very faintly bedded. Volcanic sill-like intrusion 200 to 400 feet thick. A few interbeds of maroon and green tuffaceous argillite and fine-grained sandy tuff, a turbidity-current deposit, beds 1/4 inch to 2 feet thick; well bedded with graded beds, cross-laminated sandstone beds, ripple marks and convoluted laminae.
450	Tuffaceous argillite and tuffaceous sandstone, red-brown, maroon, greenish-gray, beds 1/2 inch to 2 feet thick. Well bedded turbidity-current deposits; beds commonly graded from fine-grained tuff to silt or mud, wispy cross-laminations, ripple marks and convoluted laminae. A few thick beds of argillite, thinly parting. A few thick beds of gray chert near top.
575	Chert, gray, brown and maroon, well bedded, thick to very thick massive beds, forms prominent outcrops. Interbedded with sandy and silty argillite and siliceous shale, gray to brown, thinly bedded, weathers to small chips and plates. A few lenses of buff dolomite.
125	Sandy- and silty argillite, buff to yellow-brown, and olive-green, thickly bedded, very thin partings.
700	Chert, light to dark gray, weathers maroon, very thick massive beds. Interbedded with gray, buff and maroon sandy argillite.
100	Sandy argillite and siltstone, gray-brown and olive, thick massive beds, parts and weathers to small chips and tiny angular fragments.
200	Sandy argillite and siliceous shale, maroon, brown, very thickly bedded, a few interbeds of andesitic tuff. Subordinate interbeds of chert, maroon, thick to very thick beds. Faint clastic texture in chert.
250	Sandy argillite and siltstone, buff, gray, pink to yellow, thick beds which part into uneven chips and angular fragments. Minor beds and lenses of dolomite.

Base not exposed.

Section measured in southern limb of anticline, southernmost Pilot Mountains, immediately north of the old Mina-Tonopah stage road, T. 5 N., R. 36 E.