

1940 0029

198

ITEM 31



Western Testing Laboratories

1080 Linda Way
Sparks, Nevada 89431
(702) 331-3600

RECONNAISSANCE REPORT

B-D Claim Group
(Lab No. 023-2)

Garfield Mining District

Mineral County, Nevada

Ore Testing
Fire Assaying
Atomic Absorption Analyses
Geological Consulting

INTRODUCTION

The B-D claim group was visited on January 21 and 22, 1980, accompanied by Warren Hendrix. The claims are located in Mineral County, Nevada. They are in Township 7 North-Range 34 East, Section 30. (See Figures 1 and 2.) The terrain is rugged, and the altitude is about 7000 feet. The claims are about 8 miles directly northwest of Mina, Nevada, and are about 10 miles by road.

The claims are approximately at the northern boundary of Section 30. They are on and adjacent to a contact between a granodioritic intrusive to the south and sediments of the Luning and Dunlap formations to the north. The general trend of the contact, on the claims, appears to be northeast to east-west.

GEOLOGY

Two types of mineralization were observed. To the north, at and adjacent to the granodiorite contact, a garnet-bearing contact zone has developed in the sediments. To the south, in the intrusive, there are narrow lens-like quartz veins. Thirteen samples were taken by Hendrix and Forbes. A description and report of the gold/silver per ton of ore and percent of copper are presented in Table 1.

TABLE 1
 SAMPLES FROM B-D CLAIM GROUP
 (Taken by Forbes and Hendrix)

Sample No.	Oz Au (Gold)	Oz Ag (Silver)	% Cu	Description
1	0.004	4.09	0.08	Winze in Middle Tunnel, first crosscut to left. Claim B-D #4 6.5' cut across back. Oxidized iron-soaked material.
(Samples 2,3,4,5,6,7,8 from the surface on claims B-D #1 and #2)				
2	-0.002	0.00	*	36", from a small cut on east side of ridge on B-D #1. Shear E80°S = rotten quartz, almost sugary, little limonite.
3	0.002	0.28	*	Same place as #2. Chips from three quartz-vein float rocks, (2) +2" pieces with some mahogany quartz. (1) +5" piece white quartz and little iron stain.
4	0.004	3.67	*	Three cuts across a 2" to 6" quartz seam 260° 60°S.
5	0.002	0.29	*	Below #4 in mouth of adit, same seam, lenses to 30", white shattered quartz with sparse limonite. (NOTE: Samples #4 and #5 are near an ore pile.)
6	0.002	1.46	*	Northeast structure of claim B-D #2. Sample at face of +20' adit, on left side, cut +1' quartz seam. (NOTE: +100' trenching, snow-covered quartz float and small dump.)

* Not assayed for Cu

(Continued)

TABLE 1 (Cont.)

SAMPLES FROM B-D CLAIM GROUP
 (Taken by Forbes and Hendrix)

Sample No.	Oz Au (Gold)	Oz Ag (Silver)	% Cu	Description
7	0.016	27.69	*	Grab sample from dump by trench, mostly quartz.
8	0.002	0.34	*	+6" piece of quartz stockwork in an aplitic-granodioritic groundmass.
(Samples 9,10,11,12,13 from the Copper Tunnel, under the gauslin outcrop, from claim B-D #4.)				
9	0.002	0.35	0.30	By first winze, 6' across back, iron soaked and garnet.
10	-0.002	0.00	0.07	12'. First 6' garnet and brown iron-soaked material. Second 6' mostly garnet.
11	0.004	0.00	0.15	10'. Garnet grading into brown rock.
12	0.002	0.18	0.23	9'. Brown rock, sparse garnet.
13	0.002	0.01	0.04	3'. Mostly garnet.

* Not assayed for Cu.

The contact mineralization to the north has formed iron-stained gossan areas, one of which the gauslin has copper mineralization showing on the surface. (See Figures 3 and 4.) None of the copper assays for the underground samples were above 0.30 percent copper. The best sample taken from this area was #1 from the Middle Tunnel (near the winze), which assayed -0.002 ounce of gold per ton, 4.09 ounces of silver, and 0.00 percent of copper per ton.

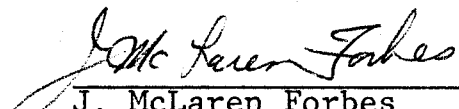
The quartz/vein outcrops in the intrusive, to the south, are not strong, although there are several northeasterly-trending quartz-bearing shear zones, some of which may be five feet or more in width.

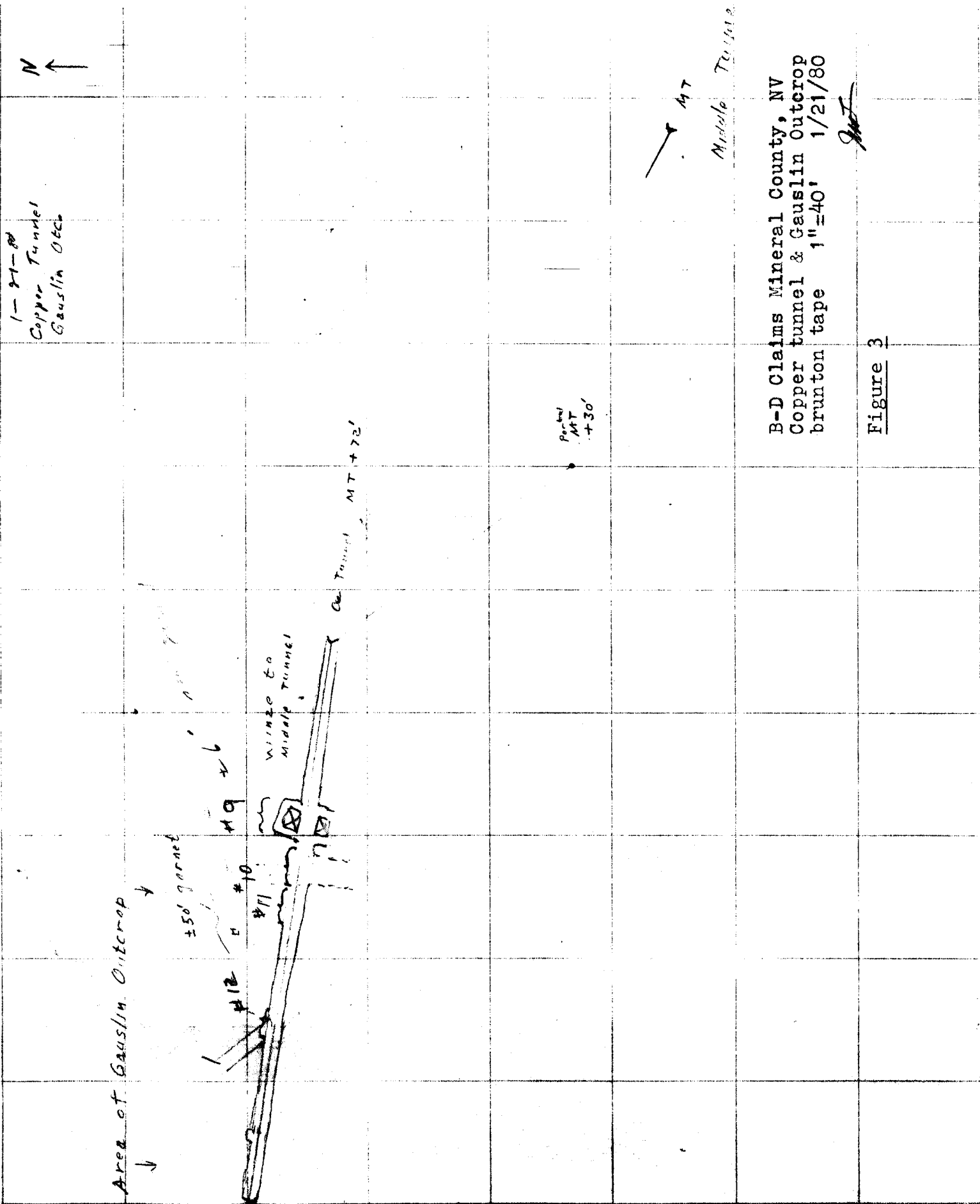
The samples taken on the intrusive are shown on the sketch map (Figure 5); location of these samples is very generalized. The best assay came from a grab sample, taken from a dump, which came from a +100' trenched area. (Snow prevented inspection of the trench.) At sample #7, there were 0.016 ounce of gold per ton and 27.69 ounces of silver per ton.

CONCLUSION

The B-D group of claims, at their present stage of development can be considered a raw prospect and not too promising.

If, considering the present prices of precious metals, some further investigation should be considered, it would be well to map and sample the vein zones in the intrusive and the remainder of the tunnels and outcrops along the contact of the granodiorite intrusive with sediment of the Luning and Dunlap formations.


J. McLaren Forbes
Mining Geologist



B-D Claims Mineral County, NV
Copper tunnel & Gauslin Outcrop
brunton tape 1"=40' 1/21/80

[Signature]

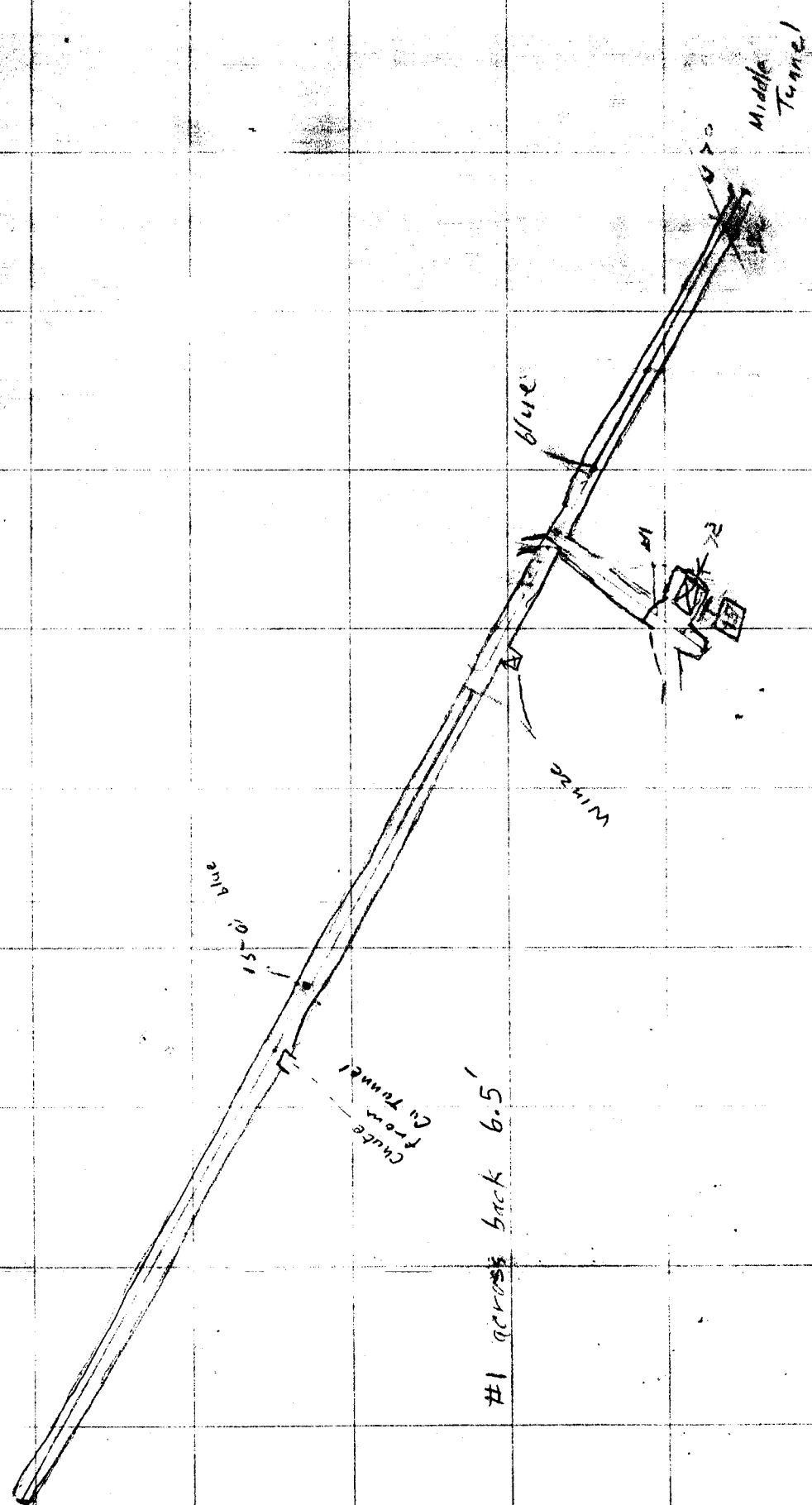
Figure 3

B-D Claims Sheet 1-40

1-20-80

Middle Tunnel

2



B-D Claims, Mineral Co. NV.

Middle Tunnel

brunton & tape 1"=40' 1/21/80

[Signature]


Figure 4

B-D#1

SHAFT

3并2开

三



PEPPER DUMP

MANUEL

MP. SAMPLE
MP. 005
APR. 09

MIDDLE
TUNNEL

8#

R-D #2

B-D#3

94

0.075

X dump

used "Copier" in a book

2200
C-1000

Typed numbers at very rough location of surface samples.

SKETCH

10

B-D CLAIMS #1, #2, #3, & #4.

probably by Hendrix

Figure 5

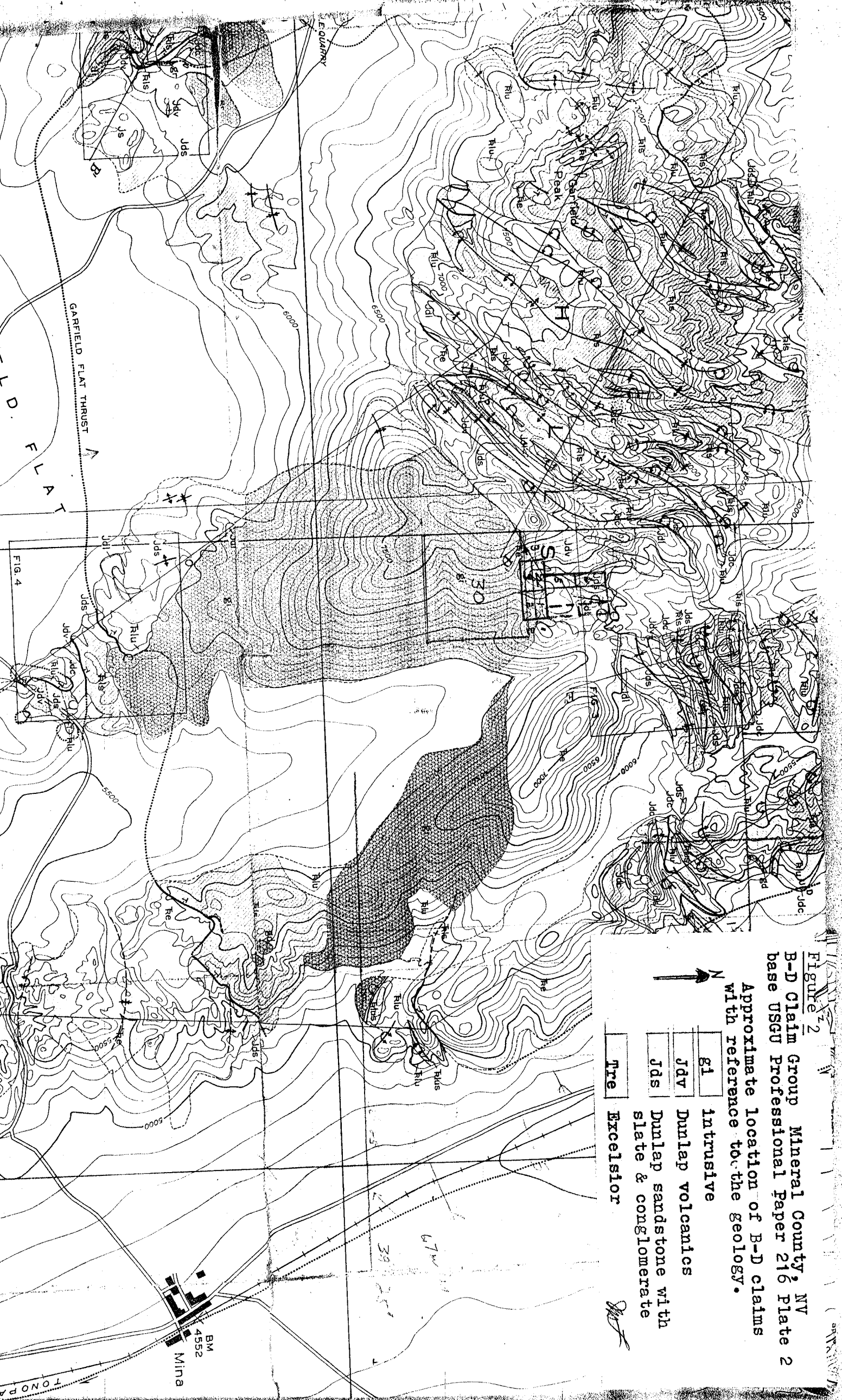


Figure 2

B-D Claim Group Mineral County, NV
base USGS Professional Paper 216 Plate 2

Approximate location of B-D claims
with reference to the geology.



- El Intrusive
- Jdv Dunlap volcanics
- Jds Dunlap sandstone with
slate & conglomerate
- Tre Excelsior