

February 15, 1970.

Mr. Russell J. Hayden,  
Senior Geologist,  
Inorganic Chemical Division,  
F.M.C. Corporation,  
P.O. Box 1728,  
Pocatello, Idaho, 83201.

Dear Mr. Hayden:

Please find attached an Index Map, concerning the B & B-Red Rock region of reconnaissance, covered with you and Mr. Robert Gibson on February 11 through 13. The map, a composite of the USGS Davis Mountain and Benton quadrangles, pin points properties, owned by Mr. Joe Belt of Bishop, or in which he has an interest. The Joe Belt package was presented to F.M.C. by Mr. Robert Gibson of Yuba City, California.

Lacking are the two prospects, staked by Mr. Belt about one half mile east of the B & B properties; the one, for purposes of recovering from B and B tailings, free quicksilver, and the other, staked on the basis of some indicative float.

Of the several properties, only the Red Rock and the adjoining Container suggest any possibilities. Containing, roughly, 350,000 tons of material, open-pit mining might provide a low grade product, with possible profit, if the Kollman B & B plant could be used for treatment.

The dashed, curving line, marked with "Q", is theoretical and must be accepted as such. Recent work on the B and B has established, beneath economic mineralization, a zone of crushing with 40 feet of true thickness. Consisting of rotten rhyolite fragments, a loamy-clay ground mass, and isolated fragments of chert and cinnabar, (from fine powder to as thick as 12 inches), the 40 feet of thickness terminates in about 12 feet of clay-gouge at its base. With a dip of from 20 to 30 degrees to the southeast, and traced in a N28°E straight line for some 2000 feet, we have, initially, considered it an overthrust.

I, is the closest possibility to a regional control, as can be found, and is being considered a large overthrust, until proven otherwise. We believe and it is our premise that the Camp Site overthrust first guided mineralizing solutions and gases into the por-

osity and permeability of the thick rhyolite tuff member which characterizes both B & B and Goering deposits. We further believe that repeated movement along the structure dragged chert and cinnabar into an ever enlarging thickness of crushing. This, too, could account for the scattered 'shows' of HgS, observed in the agglomerates and dirty tuffs of the Lucky and Breccias deposits, both of which would lie beneath the overthrust, at some distance from the source.

It was quite apparent that I was very much interested in the section between Red Rock and Container chert-cinnabar layer and underlying, fresh Paleozoic sediments. Thickness of section was not measured, but it was characterized by a mixture of clastic fragments and heavy clays. The fact that the massive cherts above it contained 'ghosts' with bedding suggests that the original broken section had considerable thickness.

For whatever merit it may have, note that the B and B overthrust outcrops at 7600 feet of elevation, and the Red Rock at about 7500 feet.

Our purpose, in this report-letter, is not to present any geological detail. Our map shows trends, as observed, which, except for the irregular overthrust trend possibility, favor the N30°E allignments of the B & B - Goering area. Note, however, that they are not in line.

Personal reactions from the three field days are:

- A. Prospect #4, the 'Breccias' at #5 and the Wild Horse at #7 are, all, small and with little possibility of developing large ore reserves at depth;
- B. the Lucky at #6 remains an enigma, with its persistent very low grade, scattered throughout the porosity of volcanics and some northeast sheating; because of its position on a direct road to the B and B mill, it might merit some testing;
- C. the McNett, theoretically on the overthrust trend, is considered a prospect, worth a few test holes;
- D. Red Rock and Container deposits merit drilling, only if the properties can be handled as satellite reserves by those operating the B and B operation.

In short, this re-review of the B and B complex and examination of adjoining prospects indicates that the only large reserves occur on the Kollman property, and that all others on the attached map considered satellites, which would be valueless to a major company, without the B & B deposits and operating plant.

Yours very truly,



David LeCount Evans

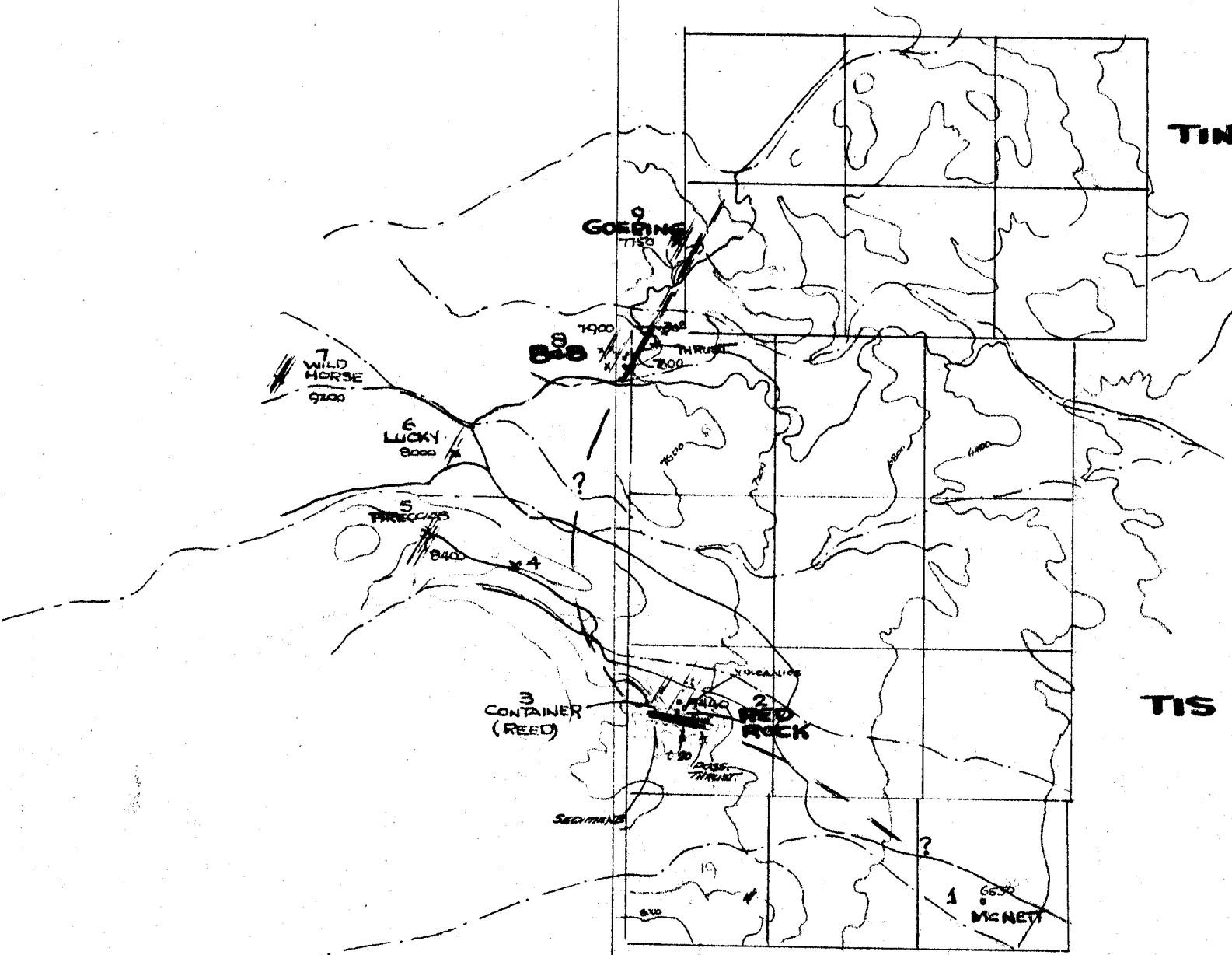
Consulting Geologist,  
1700 Royel Drive,  
Reno, Nevada.

x BLUESKIN  
 x WILD  
 ROSE  
 x Tiptop

R34E

TIN

TIS



B&B-RED ROCK  
Mercury Area

Fish Lake Valley  
Esmeralda Co., Nevada

INDEX MAP  
 1 in. = 1 Mi.

D.L. Evans Feb. 14, 1970

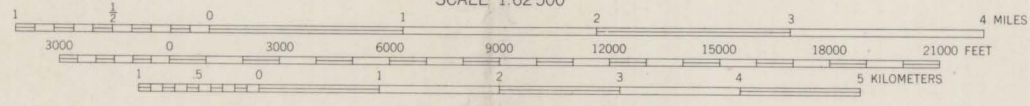
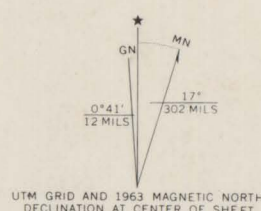


UNITED STATES  
DEPARTMENT OF THE INTERIOR  
GEOLOGICAL SURVEY

DAVIS MOUNTAIN QUADRANGLE  
NEVADA-CALIFORNIA  
15 MINUTE SERIES (TOPOGRAPHIC)



Maped, edited, and published by the Geological Survey  
Control by USGS, USC&GS, and USCE  
Topography by photogrammetric methods from aerial  
photographs taken 1958. Field checked 1963  
Polyconic projection. 1927 North American datum  
10,000-foot grid based on Nevada coordinate system, west zone  
1000-meter Universal Transverse Mercator grid ticks,  
zone 11, shown in blue  
Where omitted, land lines have not been established  
or are not shown because of insufficient data



CONTOUR INTERVAL 80 FEET  
DOTTED LINES REPRESENT 20-FOOT CONTOURS  
DATUM IS MEAN SEA LEVEL

THIS MAP COMPLIES WITH NATIONAL MAP ACCURACY STANDARDS  
FOR SALE BY U. S. GEOLOGICAL SURVEY, DENVER 25, COLORADO OR WASHINGTON 25, D. C.  
A FOLDER DESCRIBING TOPOGRAPHIC MAPS AND SYMBOLS IS AVAILABLE ON REQUEST

BRUNDIDGE'S  
RENO, NEVADA

ROAD CLASSIFICATION  
Medium-duty ——— Light-duty ———  
Unimproved dirt ———  
State Route ———

DAVIS MOUNTAIN, NEV.-CALIF.  
N3745-W11800/15

1963  
AMS 2359 I-SERIES V796

1860 0062