

1700 0001

north of 181

NW-31-4

Coal, Limestone
Dimension stone

Mining District: ELDORADO DISTRICT
(Coal, Limestone, Dimension Stone).

Item 20

T. 15-16 N., R. 21-22 E.
Lyon, Carson City Counties, Nevada
USGS Dayton 15-min. quadrangle (1956)

GENERAL BACKGROUND

The Eldorado district is located along the Lyon-Carson City County line south of Dayton. The district was first organized in the early 1860's to supply coal and lime to the surrounding mining areas, principally the Comstock Lode.

Coal mining was confined to a deposit located in the vicinity of the junction of Eldorado and Illinois Canyons. The coal proved to possess poor heating qualities and total production amounted to no more than several hundred tons. The coal deposit was not examined.

The limestone occurs in a travertine terrace in section 36, T. 16 N., R. 21 E. The rock was used in the manufacture of lime during the height of mining activities in the Comstock area.

Dimension stone has been quarried near the common corners of sections 25, 26, 35, and 36, T. 16 N., R. 21 E. However, no rock has been extracted for several years.

GEOLOGICAL AND TECHNICAL DATA

The coal reportedly occurs in thin seams, 6 to 30 inches thick, in Miocene sedimentary rocks. Analysis of the coal indicated 41 percent volatile hydrocarbons, 28 percent fixed carbon, 20 percent moisture, and 11 percent ash (2).

The limestone deposit was formed by the deposition of calcium carbonate from an ancient hot spring.

The rock quarry has been opened in andesitic rocks of Tertiary age. The stone is a pleasing green in color; probably due to chloritization.

POTENTIAL FOR DEVELOPMENT

The low rank of the coal and limited extent suggests that the deposit will be of little or no interest in the future. The coal was mined by underground methods.

No production of limestone is anticipated in the future. Past workings consist of several small open pits.

The material at the rock quarry is available for disposal through mineral material sales.

COMPANIES AND CLAIMANTS ACTIVE IN AREA

- | | |
|----------------------|----------------------|
| 1. McCULLA & DEMCHAK | 2. CONFUSION |
| Sid McCulla, et.al. | Paul Thompos, et.al. |
| Yerington, Nevada | Box 563 |
| Sept. 1967 | Walnut Grove, Calif. |
| (160 acre placer) | Mar. 1972 |
| | (Lode Claim) |

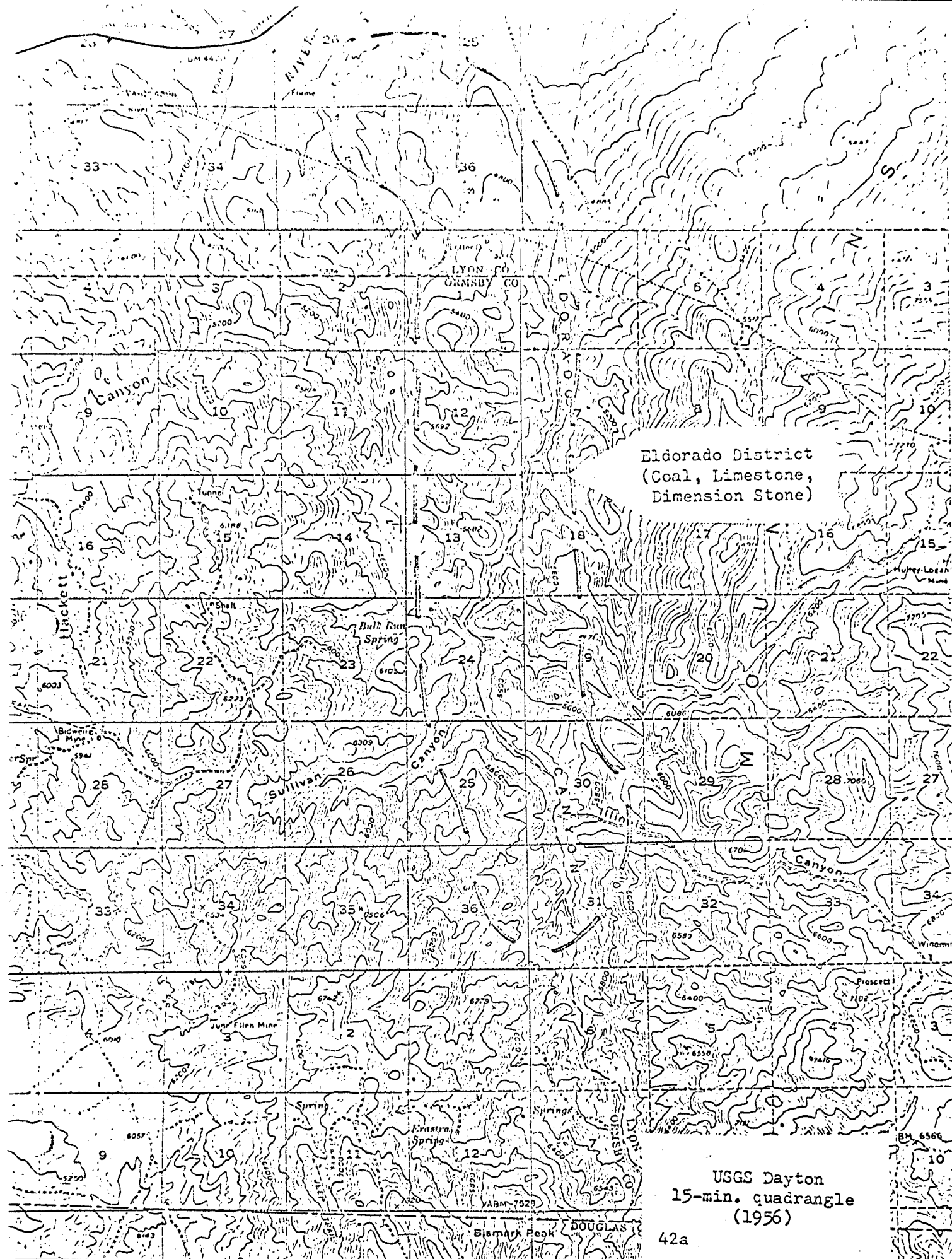
SELECTED REFERENCES

1. Moore: Geology and Mineral Deposits of Lyon, Douglas, and Ormsby Counties, Nevada; Nev. Bur. Mines Bull. 75, 1969.
(Includes geologic map of area)
2. Shepard: Validity examination of the Royal Green Building Stone Placer; BLM T&R Files, 1965 (unpublished)
3. Stoddard and Carpenter: Mineral Resources of Storey and Lyon Counties, Nevada; Univ. Nev. Bull. 1, 1950.

FIELD EXAMINATION

Bennett, May 1973 (limestone deposit, stone deposit)

Bennett, May 1973



Eldorado District
(Coal, Limestone,
Dimension Stone)

USGS Dayton
15-min. quadrangle
(1956)

42a

Taken from:

Mineral Resources Inventory and Analysis
of the
Pine Nut Planning Unit

Carson City District
Nevada and California

By

R. E. Bennett

1973

~~see~~ Douglas County - general

Item 15

for preface & general
background information