

Mining District File Summary Sheet

DISTRICT	Disaster
DIST_NO	1470
COUNTY	Humboldt
If different from written on document	
TITLE	Western Energy Development Corporation -
If not obvious	Kings River Uranium Exploration Project
AUTHOR	Edwards, R.J.
DATE OF DOC(S)	2009
MULTI_DIST Y (N?)	
Additional Dist_Nos:	
QUAD_NAME	Calavera Canyon 7 1/2'
P_M_C_NAME	Western Energy Development Corp.;
(mine, claim & company names)	Kings River Uranium Exploration Project
COMMODITY	Uranium
If not obvious	
NOTES	Scoping document; location maps
	Note - combine 3 pdfs into 1 document
	4 p + 1 ss = 5 pgs
	Location Digital only

Keep docs at about 250 pages if no oversized maps attached
(for every 1 oversized page (>11x17) with text reduce
the amount of pages by ~25)

Revised: 1/22/08

SS: DP 2/10/09
Initials Date
DB: Initials Date
SCANNED: MT 1.15.10
Initials Date



United States Department of the Interior

BUREAU OF LAND MANAGEMENT

Winnemucca District Office
5100 East Winnemucca Boulevard
Winnemucca, Nevada 89445-2921
Phone: (775) 623-1500 Fax: (775) 623-1503
Email: NV_WFO_Webmail@blm.gov
www.nv.blm.gov/winnemucca



In Reply Refer to:

N85094

3809/1792 (NVW0100.31)

FEB 27 2009

Dear Interested Public:

The Bureau of Land Management (BLM), Winnemucca District Office, Humboldt River Field Office (WDO/HRFO) is seeking public input as it initiates an environmental analysis process for Western Energy Development Corporation's Kings River Valley Uranium Exploration Project plan of operations to expand their existing notice-level activities in the Kings River Valley, on the western slope of the Montana Mountains in Humboldt County, Nevada. The project would be located in Township 45 North, Range 34 East, Sections 4, 9 and 16; and Township 46 North, Range 34 East, Sections 22, 27, 28, 33 and 34, Mount Diablo Base and Meridian as shown on the following enclosed maps.

- Map of General Vicinity for Proposed Project
- Site Specific Map of Proposed Project Area

Western Energy Development Corporation's existing operations consist of two separate notices, each less than five acres in size, all on public land. The exploration activities would be expanded in accordance with the newly proposed plan of operations. A maximum of 250 acres out of approximately 1,382 acres of public land outlined by the plan is proposed for surface disturbance as a phased plan of operations. Surface disturbance would consist of cross country and constructed drill roads, drill pads and associated cuttings sumps. The proposed Phase I surface disturbance (including existing notice level disturbances) would consist of up to 210 new drill sites accessed by approximately 44,925 linear feet of new roads on 58.01 acres on public land. Subsequent surface disturbance in future phases would be dependent upon the results of exploration in Phase I. The project is planned to run for approximately 5 years. Reclamation would include recontouring the surface disturbances and revegetation.

In accordance with Council on Environmental Quality Regulations at 40 CFR 1500, for Implementing the Procedural Provisions of the National Environmental Policy Act (NEPA), the BLM WDO/HRFO, will be preparing an environmental analysis of the proposed project. This analysis will disclose the environmental impacts expected to occur should the project be implemented. The BLM is seeking your input in identifying issues and concerns regarding this proposal.

The public is invited to submit comments on the proposal through March 31, 2009. Please send written comments to Ms. Jeanette Black, project lead, at the above address or e-mail

NV_WFO_Webmail@blm.gov with "Kings River Uranium Project (Black)" in the subject line. This letter and maps are also available on our NEPA webpage at www.blm.gov/nv/st/en/fo/wfo/blm_information/nepa0.html. In addition, a copy of their plan of operations is available for review at the Winnemucca District Office during regular business hours for 30 days from the date of this letter.

Public comments submitted for this project, including names and addresses of commenters, will be available for public review at the WDO during regular business hours 7:30 a.m. to 4:30 p.m., Monday through Friday, except federal holidays. Before including your address, phone number, e-mail address, or other personal identifying information in your comment, you should be aware that your entire comment -- including personal identifying information -- may be made publicly available at any time. While you can ask us in your comment to withhold personal identifying information from public review, we cannot guarantee that we will be able to do so.

If you have any questions, please contact Jeanette Black at (775) 623-1794 or at the above address.

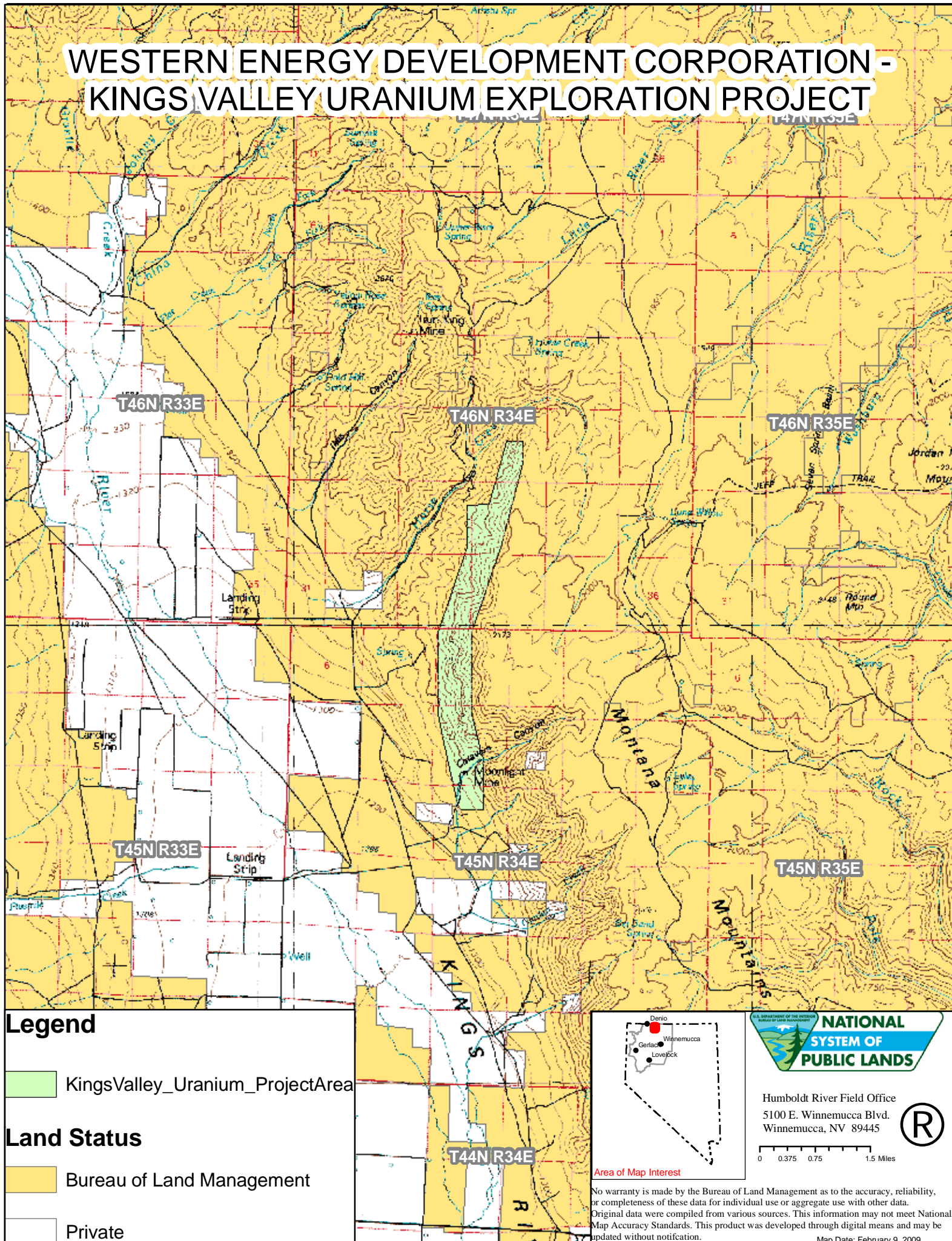
Sincerely,

A handwritten signature in dark ink, appearing to read "R. Edwards", written in a cursive style.

Robert J. Edwards
Field Manager
Humboldt River Field Office

Enclosures (2)

WESTERN ENERGY DEVELOPMENT CORPORATION - KINGS VALLEY URANIUM EXPLORATION PROJECT



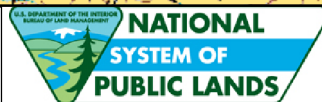
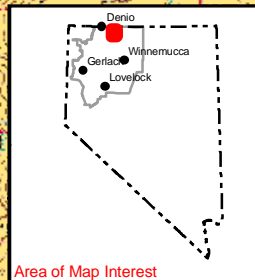
Legend

KingsValley_Uranium_ProjectArea

Land Status

Bureau of Land Management

Private



Humboldt River Field Office
5100 E. Winnemucca Blvd.
Winnemucca, NV 89445

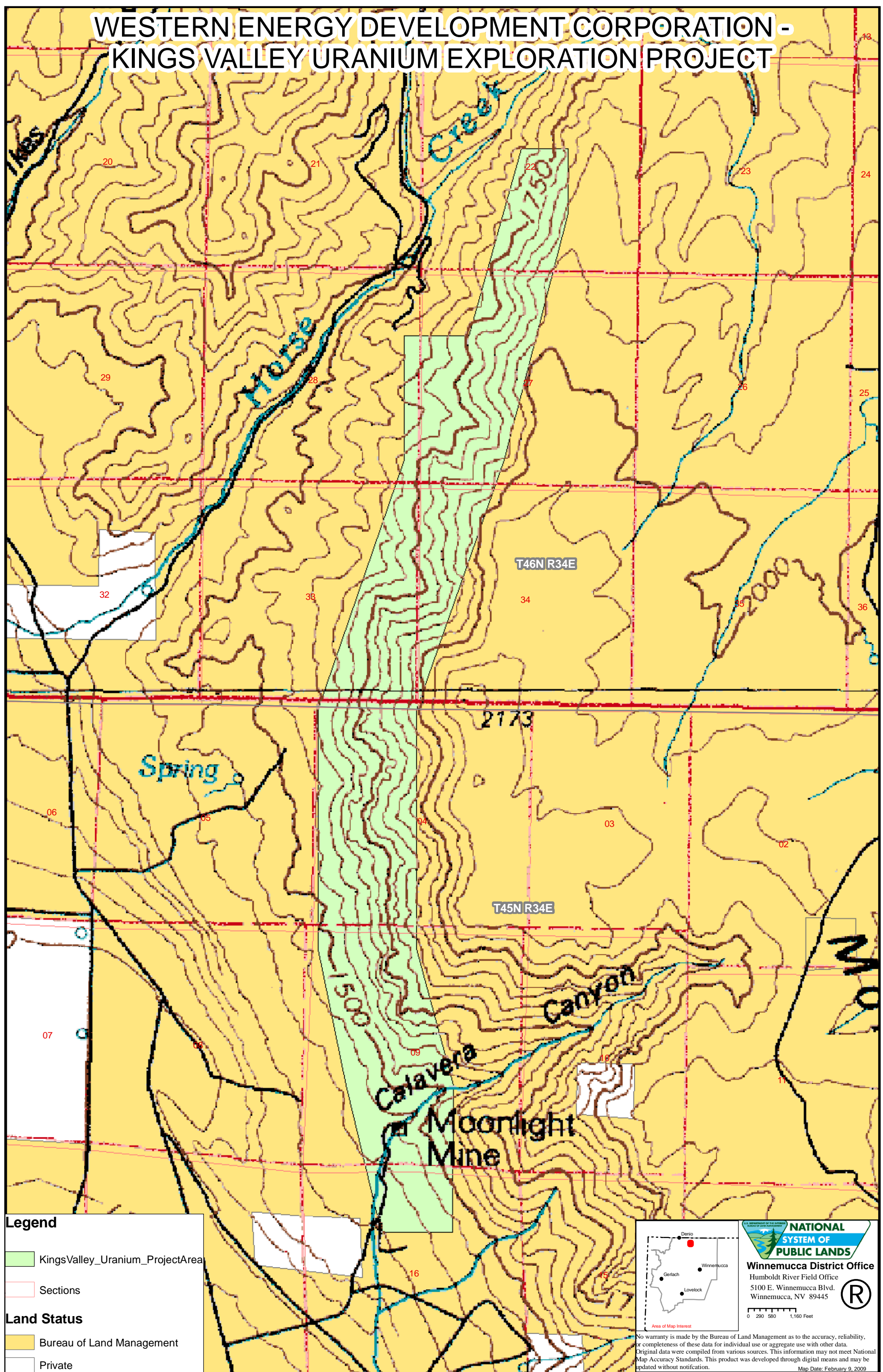


0 0.375 0.75 1.5 Miles

Area of Map Interest

No warranty is made by the Bureau of Land Management as to the accuracy, reliability, or completeness of these data for individual use or aggregate use with other data. Original data were compiled from various sources. This information may not meet National Map Accuracy Standards. This product was developed through digital means and may be updated without notification.
Map Date: February 9, 2009

WESTERN ENERGY DEVELOPMENT CORPORATION - KINGS VALLEY URANIUM EXPLORATION PROJECT



Legend

KingsValley_Uranium_ProjectArea

Sections

Land Status

Bureau of Land Management

Private

Winnemucca District Office
Humboldt River Field Office
5100 E. Winnemucca Blvd.
Winnemucca, NV 89445

No warranty is made by the Bureau of Land Management as to the accuracy, reliability, or completeness of these data for individual use or aggregate use with other data. Original data were compiled from various sources. This information may not meet National Map Accuracy Standards. This product was developed through digital means and may be updated without notification.

Map Date: February 9, 2009