

## Mining District File Summary Sheet

DISTRICT	Disaster
DIST_NO	1470
COUNTY	Humboldt
If different from written on document	
TITLE	Western Lithium Corp. Kings Valley Exploration Project
If not obvious	
AUTHOR	Edwards, R.
DATE OF DOC(S)	2008
MULTI_DIST Y / (N?)	
Additional Dist. Nos:	
QUAD_NAME	Thacker Pass 7 1/2'
P_M_C_NAME	Western Lithium Corp.
(mine, claim & company names)	
COMMODITY	Lithium
If not obvious	
NOTES	Scoping document, location map, correspondence
	NOTE: DO NOT SCAN - PDF is already in EATODO directory - see David Yp.

Keep docs at about 250 pages if no oversized maps attached  
(for every 1 oversized page (>11x17) with text reduce  
the amount of pages by ~25)

Revised: 1/22/08

SS:	DD	12/11/08
	Initials	Date
DB:		
	Initials	Date
SCANNED:	MT	12.21.07
	Initials	Date





## United States Department of the Interior

### BUREAU OF LAND MANAGEMENT

Winnemucca District Office  
5100 East Winnemucca Boulevard  
Winnemucca, Nevada 89445-2921  
Phone: (775) 623-1500 Fax: (775) 623-1503  
Email: [NV\\_WFO\\_Webmail@blm.gov](mailto:NV_WFO_Webmail@blm.gov)  
[www.nv.blm.gov/winnemucca](http://www.nv.blm.gov/winnemucca)



In Reply Refer to:  
3809/1792  
N85255  
(NV-010.34)

DEC 09 2008

RECEIVED

DEC 10 2008

DEPARTMENT OF ADMINISTRATION  
OFFICE OF THE DIRECTOR  
BUDGET AND PLANNING DIVISION

Dear Interested Public:

The Bureau of Land Management (BLM), Winnemucca District Office, Humboldt River Field Office (WDO/HRFO) is seeking public input as it initiates an environmental analysis process for Western Lithium Corporation's Kings River Exploration Project plan of operations to expand their existing notice-level activities near Thacker Pass, south of the Montana Mountains, approximately fifty-four miles north-northwest of Winnemucca in Humboldt County, Nevada (T.44 N., R. 35 E., Sections 4, 5, 6, 7, 8, 9, and 17).

Western Lithium Corporation's existing operation is approximately 5 acres in size, and consists of exploration roads and drilling activities, all on public land. The newly proposed plan of operations project area would cover approximately 1210 acres, of which only 70 acres (in addition to the 5 already disturbed under their current Notice) are planned to be disturbed. They propose to continue their exploration by drilling, constructing new roads, and creating trenches for bulk sampling. The project would be conducted in phases and is planned to run for approximately 5 years. The total surface disturbance (existing and proposed) would be up to 75 acres, all on public land, and within the Plan of Operations boundary (see attached maps). Reclamation would include recontouring the surface disturbances and revegetation.

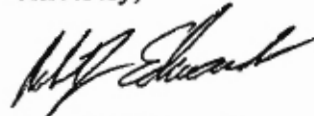
In accordance with Council on Environmental Quality Regulations at 40 CFR 1500, for implementing the procedural provisions of the National Environmental Policy Act (NEPA), the BLM WDO/HRFO, will be preparing an environmental analysis of the proposed project. This analysis will disclose the environmental impacts expected to occur should the project be implemented. The BLM is seeking your input in identifying issues and concerns or applicable knowledge to assist us with the NEPA process.

The public is invited to submit comments on the proposal through December 31, 2008. Please send written comments to Ms. Kathleen Rehberg, project lead, at the above address or e-mail [NV\\_WFO\\_Webmail@blm.gov](mailto:NV_WFO_Webmail@blm.gov) with "Kings River Lithium Project (Rehberg)" in the subject line. This letter and map are also available on our NEPA webpage at [www.blm.gov/nv/st/en/fo/wfo/blm\\_information/nepa0.html](http://www.blm.gov/nv/st/en/fo/wfo/blm_information/nepa0.html). In addition, a copy of their plan of operations is available for review at the Winnemucca District Office during regular business hours for 30 days from the date of this letter.

Public comments submitted for this project, including names and addresses of commenters, will be available for public review at the WDO during regular business hours 7:30 a.m. to 4:30 p.m., Monday through Friday, except federal holidays. Before including your address, phone number, e-mail address, or other personal identifying information in your comment, you should be aware that your entire comment -- including personal identifying information -- may be made publicly available at any time. While you can ask us in your comment to withhold personal identifying information from public review, we cannot guarantee that we will be able to do so.

If you have any questions, please contact Kathleen Rehberg at (775) 623-1739 or at the above address.

Sincerely,

A handwritten signature in black ink, appearing to read "R. J. Edwards", written in a cursive style.

Robert J. Edwards  
Field Manager  
Humboldt River Field Office

enclosures



# Western Lithium Corp. Kings River Valley Exploration Project






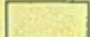
United States Department of the Interior  
Bureau of Land Management  
Winnemucca Field Office  
5100 E. Winnemucca Blvd.  
Winnemucca, NV 89445





No warranty is made by the Bureau of Land Management as to the accuracy, reliability, or completeness of these data for individual use or aggregate use with other data.

0 1 2 Miles

-  Plan Boundary
-  State of Nevada Boundary
-  Winnemucca District Boundary

 Township

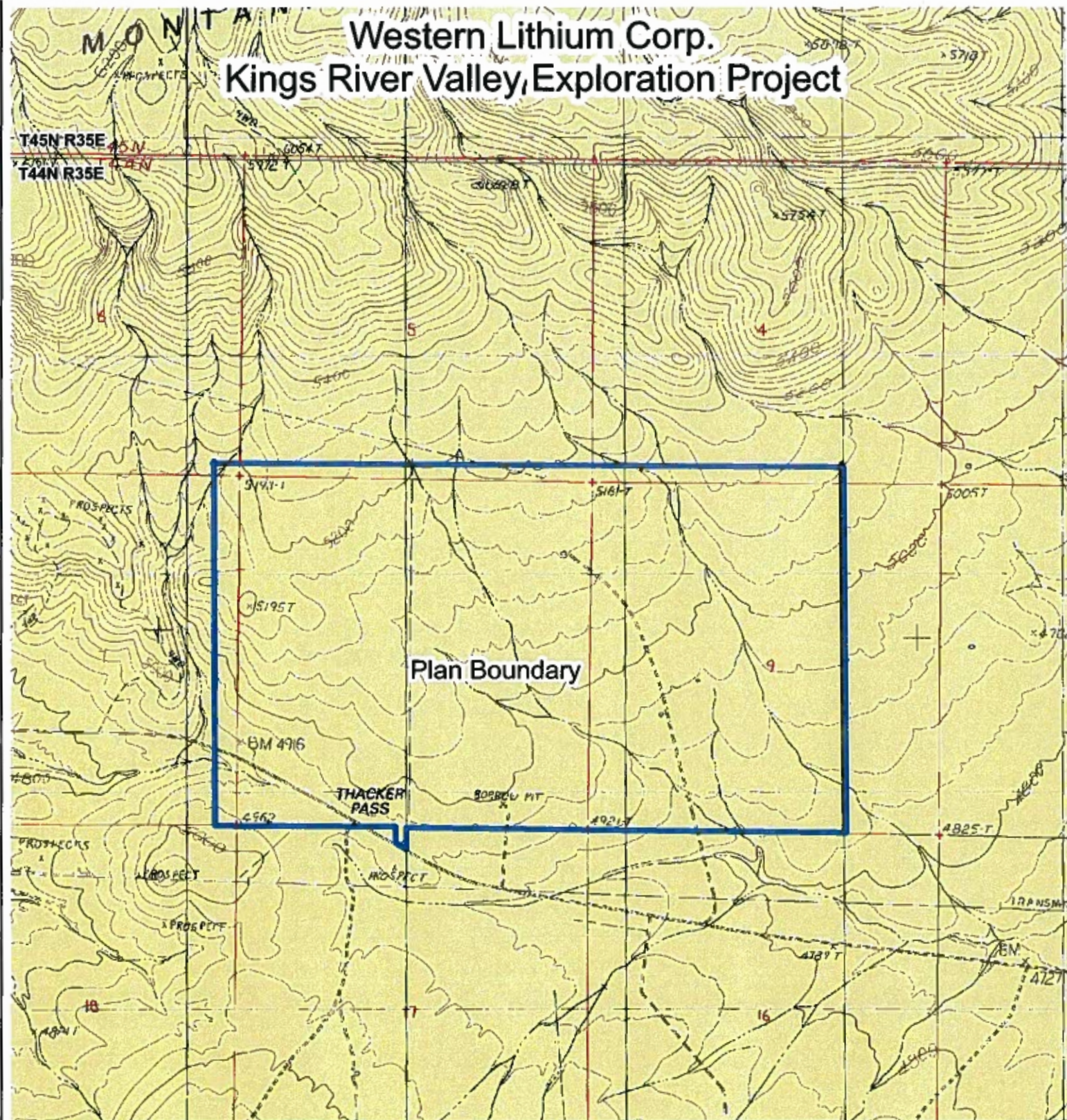
## Land Status

-  Bureau of Land Management
-  Private





# Western Lithium Corp. Kings River Valley, Exploration Project



United States Department of the Interior  
Bureau of Land Management  
Winnemucca Field Office  
5100 E. Winnemucca Blvd.  
Winnemucca, NV 89445

No warranty is made by the Bureau of Land Management as to the accuracy, reliability, or completeness of these data for individual use or aggregate use with other data.

- Plan Boundary
- State of Nevada Boundary
- Winnemucca District Boundary
- Township
- Land Status**
- Bureau of Land Management

