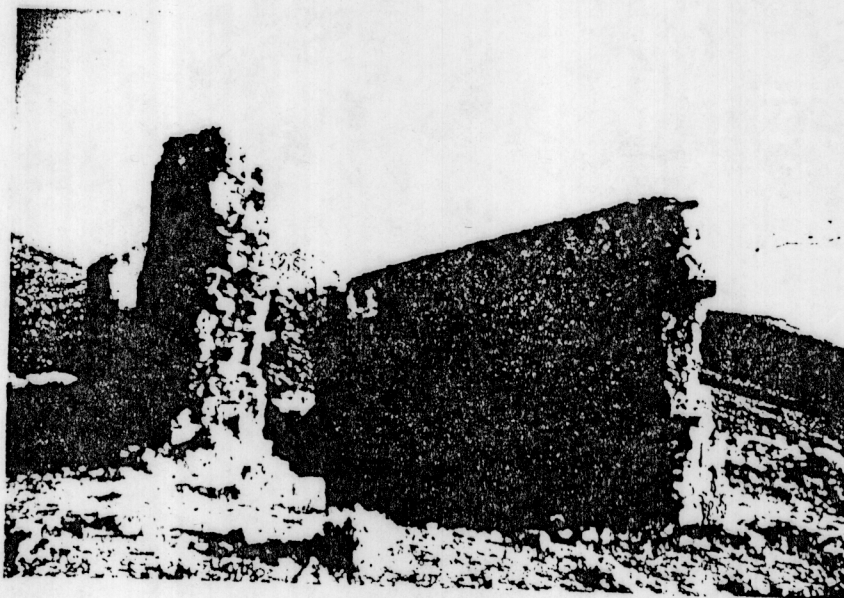


1370 0006

167
Item 6

Location Number: LN 014

Location: Delamar
Coordinates: 37°27' / 114°46' T6S R64E S1
Elevation: 5900'
Map Sources: USGS Delamar Quadrangle; Erickson County Map; Nevada Map Atlas; Clason 1906
References: Paher; Carlson; Mordy; Historic Markers; Site Investigation 9/14/77
Photographs: KR64-ECA# : 5-31; PlusX-ECA#3: 1-18
Status: Potential National Register Site



The ruins of the mining town of Delamar are on the eastern edge of Delamar Valley, which lies between the northeast-southwest-trending Delamar Mountains to the east and the South Pahroc Range on the west. Farther west is the Hiko

Range, with the town of Hiko at its northern extremity (about 17 miles northwest of Delamar). The Meadow Valley Mountains parallel the Delamar Range on the east, and beyond these is Meadow Valley Wash. The town and mill sites are in an area of barren hills and valleys. The only vegetation is sagebrush and a scattering of pinyon pine.

With the discovery of gold in the Ferguson (later Delamar) district in the early 1890s, the towns of Ferguson (Golden City) and Helene sprang up near the mines. After principal claims in the district had been purchased in 1893 by Captain John De Lamar, his newly founded Delamar camp soon absorbed the population of the earlier camps, becoming the principal town in the district. Between 1894 and 1895, Delamar had acquired a newspaper, a post office, a hospital, a school, and two churches as well as many rubble-rock com-

a tailing pile where it is anchored. Much of the wood framework is missing from the trestle. At the toe of the slope in the valley are remnants of stone structures. These structures are all about 8' x 8', 16' x 12' and 14' x 14' and have angular rock walls (unmortared) that vary in thickness up to 24 inches. The walls also vary in height up to 6 feet high. Unmortared rock walls also indicate where areas were leveled so that structures could be built.

At present the Bureau of Land Management is devising a protective plan for the architectural values associated with the Helene grave site. This site has been vandalized.