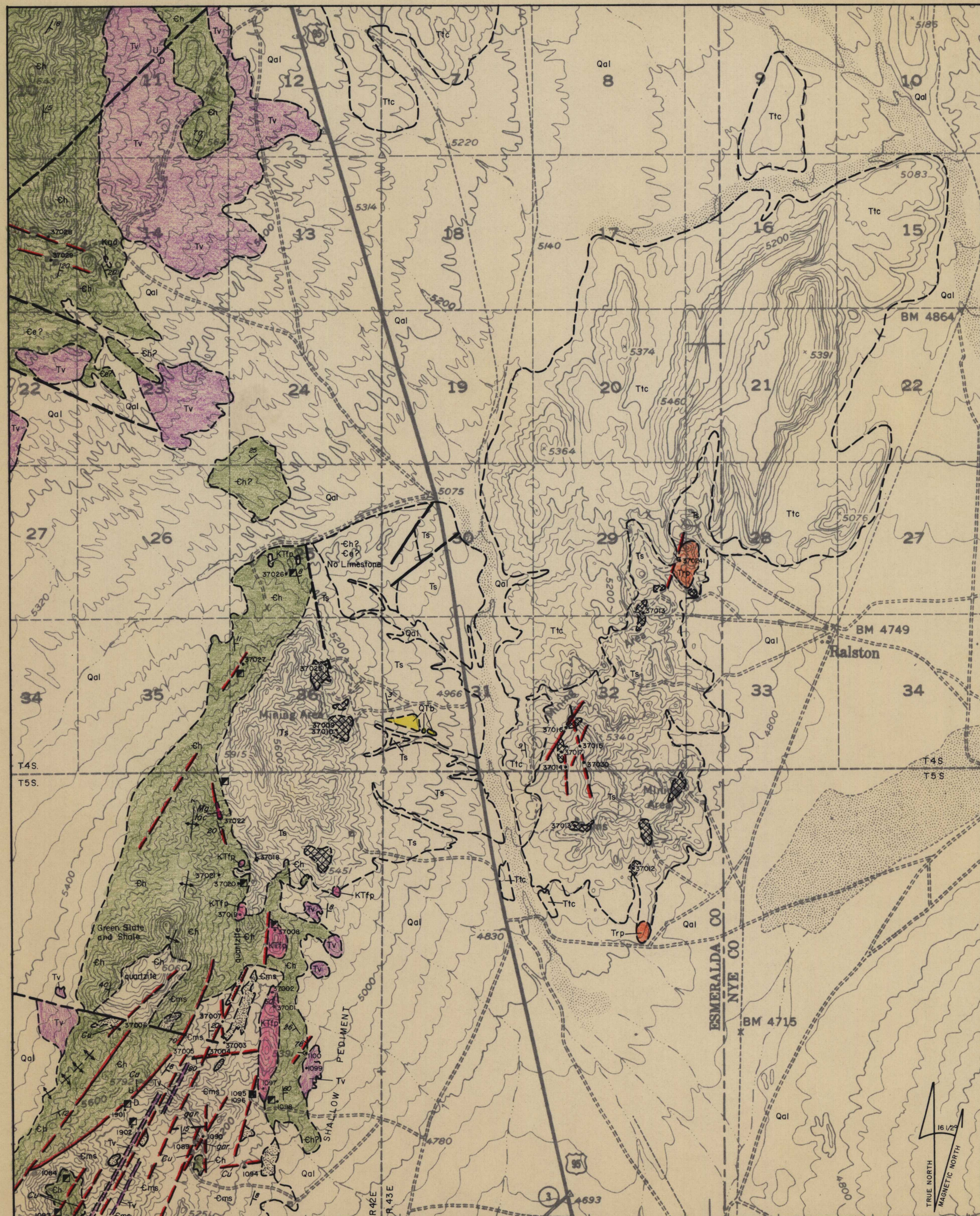


# GEOLOGIC MAP OF THE CUPRITE DISTRICT AREA

ESMERALDA AND NYE COUNTIES, NEVADA

1975

PLATE 4



BASE FROM U.S.G.S. GOLDFIELD, NEVADA, 15' TOPOGRAPHIC QUADRANGLE, 1952.

SCALE IN MILES  
CONTOUR INTERVAL 40 FEET  
COMPILED BY RON C. LONG, 1975

NOTE: EXPLANATION ACCOMPANIES THIS MAP.

CONTINENTAL OIL COMPANY  
MINERALS DEPARTMENT  
RENO, NEVADA

QUATERNARY	CUPRITE DISTRICT-EXPLANATION	
	Symbol	Description
QUATERNARY	Qal	Alluvium, basalt flow.
	Ttc	Spearhead Member of Thirsty Canyon Tuff, welded ash flow.
	Trp	Rhyolite porphyry, plug-like intrusive (?) masses.
TERTIARY	Ts	Siebert Tuff, tuffaceous lake beds, conglomerate, diatomite.
	Tv	Volcanics, flows of rhyolite, andesite dikes, ash flows.
	KTfp	Felsite porphyry, elongate intrusive masses.
CRETACEOUS (?)	Kqd	Quartz diorite, probably a sill, foliated.
	Ge	Emigrant formation, limestone, black chert, siltstone.
	Gms	Mule Spring formation, limestone with algal structures.
CAMBRIAN	Ch	Harkless formation, siltstone, quartzite, minor limestone.

## ALTERATION

Symbol	Description
Chalcodony, kaolinite, native sulfur.	
Marbleization of limestone.	
Magnetite tactite, veins and pods.	
Veins: quartz and iron oxides, commonly copper-bearing.	
Garnet veins or disseminated crystals.	

## SYMBOLS

Symbol	Description
Bedding attitude.	
Joint attitude.	
Synclinal axis	
Fault, U, upthrown side, D, downthrown side.	
Geochemical sample site and number.	
Shaft	
Adit	

NOTE: THIS EXPLANATION ACCOMPANIES GEOLOGIC MAP OF THE CUPRITE DISTRICT AREA, ESMERALDA AND NYE COUNTIES, NEVADA (PLATE 4).

Conoco-Cuprite District  
Item m6 (86)

1320 0024