

1300 0004

(25)

item 4

LOPEZ CLAIMS, CLARK COUNTYLocation:

Mr. Robert Lopez, 610 South 3rd Street, Las Vegas, has a number of unpatented claims just south of the Eldorado mining district. The claims lie along the western flank of the McCullough Range in townships T. 29 S. R. 61 E. and T. 17 S., ~~Ran~~<sup>n</sup> 17 E. (i.e. the contiguous claims extend from about 3 miles south of Crescent Peak into California). The property is easily accessible either from Searchlight, Nev. or Nipton, Cal. A bulldozed road extends southward from the Searchlight-Nipton road at a road junction one mile south of Crescent Peak to the property.

Samples:

Twelve samples were collected by L. H. Beal on January 24, 1959. Samples 1-5 were collected near the location monument of Prospector #9 (see Sketch #1). These samples were collected from ~~the~~ veins exposed in a cut. The thorium bearing rock occurs in a zone of veins; the veins vary in width from 1 inch to nearly a foot. The decomposed walls are pre-Cambrian granites and are locally cut by biotite-rich dikes. Samples 6-7 (see sketch # 2) were cut from a trench near the location monument of Prospector # 5. Samples 8-9 were taken about 400' north of location monument of Prospector # 9 in small trenches. Sample # 10 was taken from the Red Rat claim situated about 1.5 miles southwest of Prospector # 9. The sample was cut from a 4" inch vein enclosed by granite. Sample # 11 came from Wooze # 20 and sample # 12 from Nucleus # 25.

WV  
5215  
8050  
1165

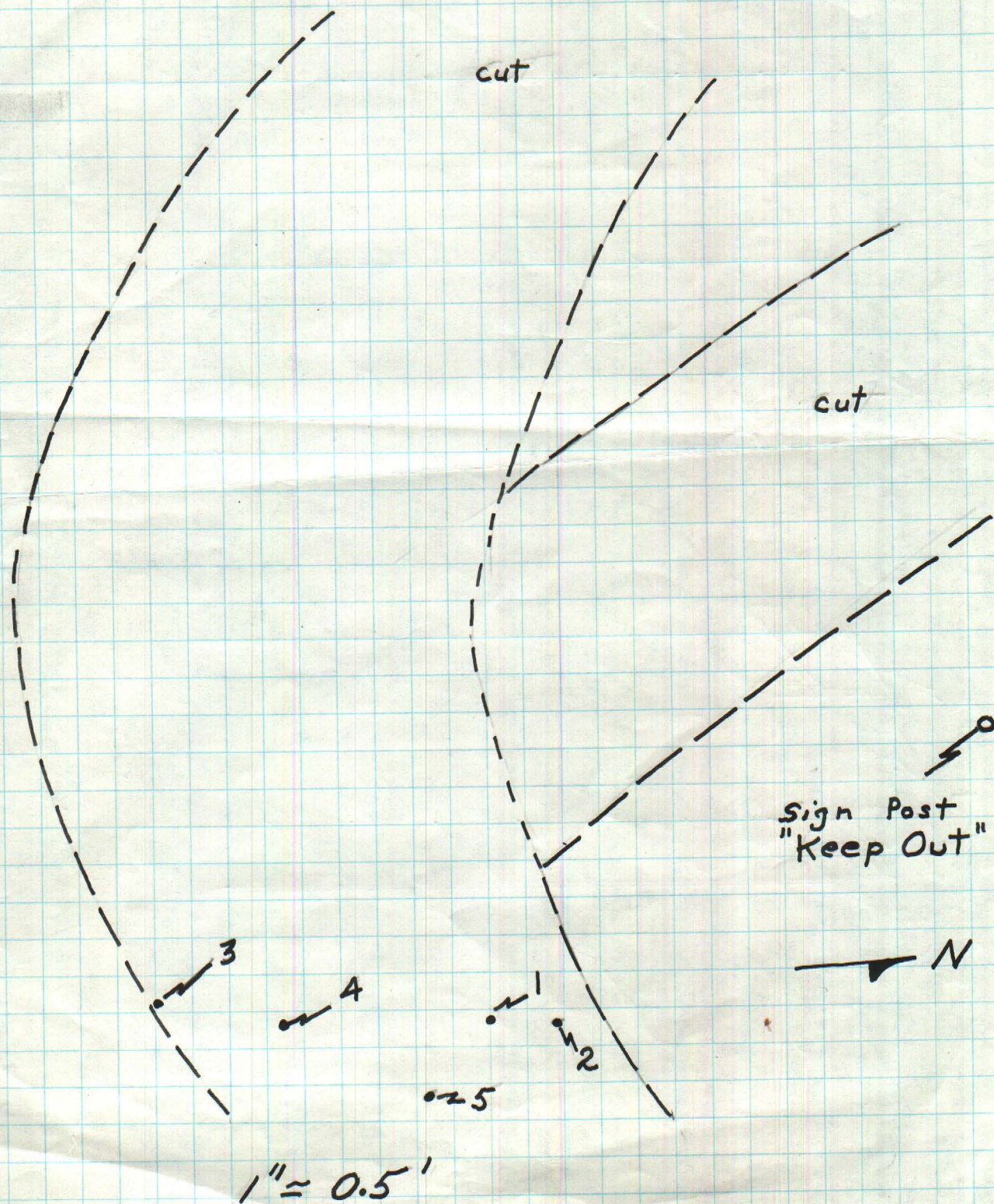


Notes on the "Ore":

The "ore" material seems to occur along a south to southwest trending zone. The host rock is granite to granodiorite, with dikes of hornblende, shonkinite (?), and hornblende diorite-gabbro parallel to the zone. To the west the area is capped by volcanics. Also to the west there are several large fault zones having a strike of northeast to north northeast. The thorium bearing vein rock seems to occur as veins or lenses and pods throughout a zone 500 feet wide by about 2 miles long. The vein material is irregularly deposited and does not occur in large tonnages but rather as small irregularly distributed bodies or veins. Workings consist of small trenches and cuts. all



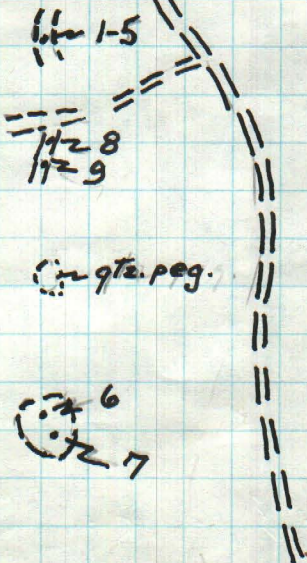
Sketch I  
Prospector No. 9





# Sketch II

Tertiary - Volc.  
pre-Camb.  
granite-gneiss



1" ≈ 1/mile