

1200 0167

J. McLAREN FORBES
Consulting Geologist

309

ITEM 236

2275 MUELLER DRIVE
RENO, NEVADA 89509

TELEPHONE: AREA CODE 702 - 826-1545

PRELIMINARY REPORT

Yellow Jacket, Ward, and Europa Dumps
Comstock Lode, Storey County, Nevada

J. McLaren Forbes
J. McLaren Forbes
August 28, 1980

At the request of and accompanied by Laksir Napier, I made a preliminary examination of the East Yellow Jacket mine dump, the Ward mine dump, and the Europa mine dump. These dumps are located in the vicinity of Virginia City and Gold Hill, at the Comstock Lode, Storey County, Nevada.

Only a cursory inspection was made at the Europa mine dump, as this was considered to be all that was necessary, considering the low gold and silver values reported by the assaying of the 20 surface samples taken from the East Yellow Jacket and the Ward dumps. The Europa dump appeared to be composed of much the same material as the other two dumps.

At least one of the owners of the property, Mr. Bill Gabler, with his son Lance, and Mr. Maurice Scott, who had apparently presented the property to Mr. Napier, were on the property part of the time during the examination. Their implications were that there were several millions of tons in the East Yellow Jacket dump and there was talk of large amounts of material that could be profitably treated to extract gold and silver.

Three days were spent on the property. The first day, August 15th, was used to become acquainted with the location of the three dumps while conversing with Mr. Scott and the Gablers.

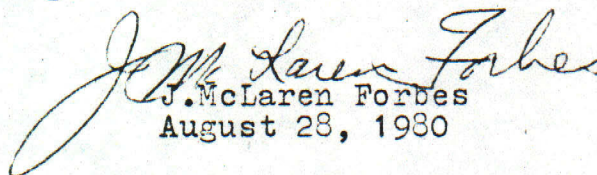
On the second day, August 16th, a brunton and tape survey was made of the East Yellow Jacket dump. This survey was accurate enough to be used to make an estimate of the tonnage in the dump. The contours of the original land surface at the base of the dump had to be assumed, since no pre-dump topographic map was available. It is felt that the tonnage calculated for the East Yellow Jacket

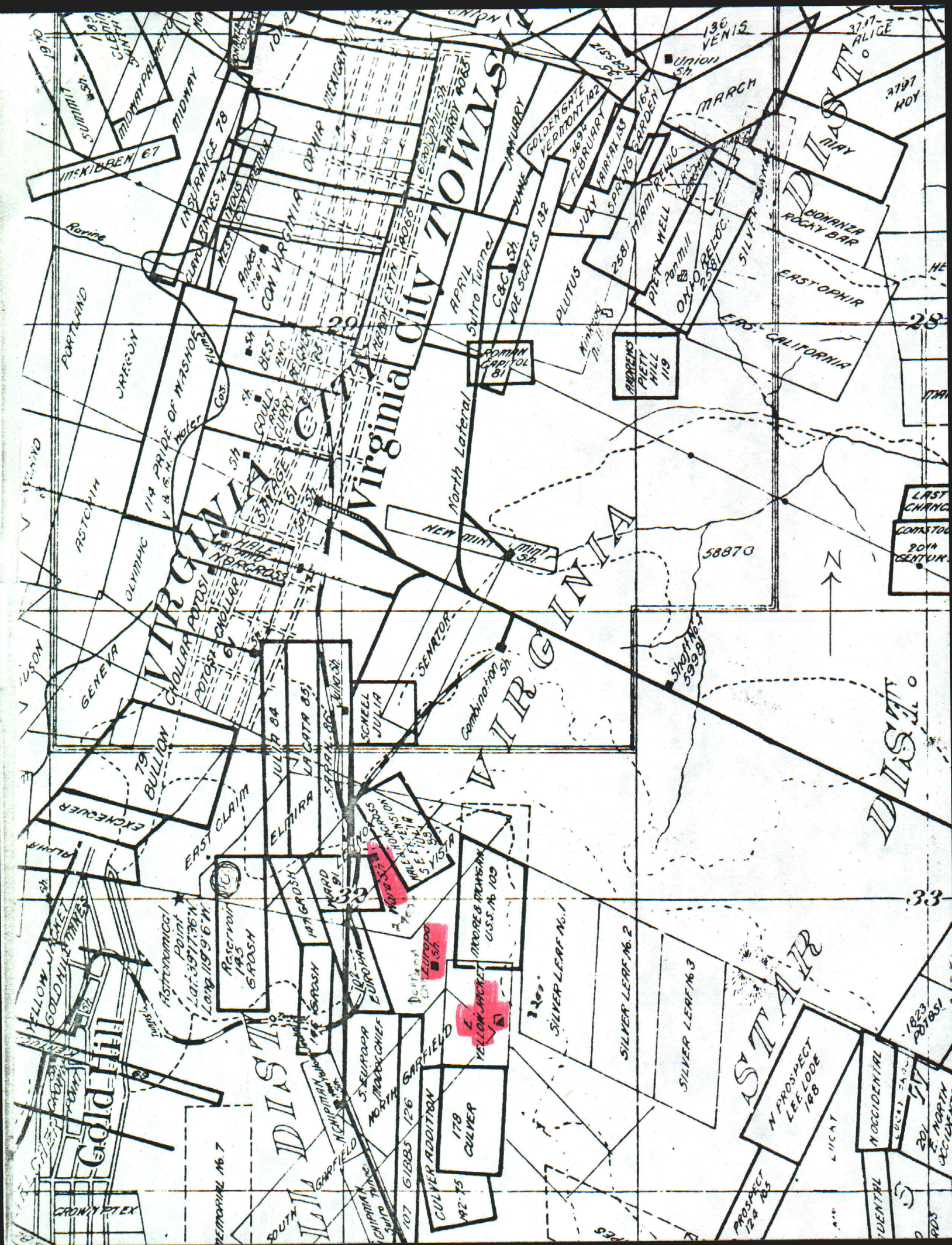
dump is a reasonable estimate, 150,000 tons of dump material. A brunton and tape sketch was made of a portion of the Ward shaft dump.

The third day, August 18th, was spent sampling the East Yellow Jacket and Ward dumps. The various sample locations, their assay results and dollar values, at \$600 an ounce for gold and \$16 an ounce for silver, are plotted on the dump maps. These maps and sample descriptions accompany this report.

CONCLUSION:

The values obtained from the sampling of the Yellow Jacket and Ward dumps have too low a dollar value for the material in these dumps to be mined and processed at a profit. No further sampling is warranted.


J. McLaren Forbes
August 28, 1980



WARD DUMPS

Sample #	gold	Per Ton silver	-----Description -----
		\$ 2	
		\$600/oz gold	
		\$ 16/oz silver	
W-1	0.016	2.01	9.76 Samples cut from a group of 7 pits . The rock is more or less bleached and oxidized.
W-2	0.004	0.05	3.20 Partially iron stained material from a pit near JM135.
W-3	0.006	-.01	3.76 S side of pit, $\pm \frac{1}{2}$ " material, N side ± 2 " .
W-4	0.004	0.18	5.28 Mixed oxidized and fresh rock from pit JM122.
W-5	0.036	0.45	18.88 Oxidized material, reddish-yellow, probably stripping from the Siskon Pit, from pit JM52.

* Note: Sample weights varied from 15 to 50 pounds.

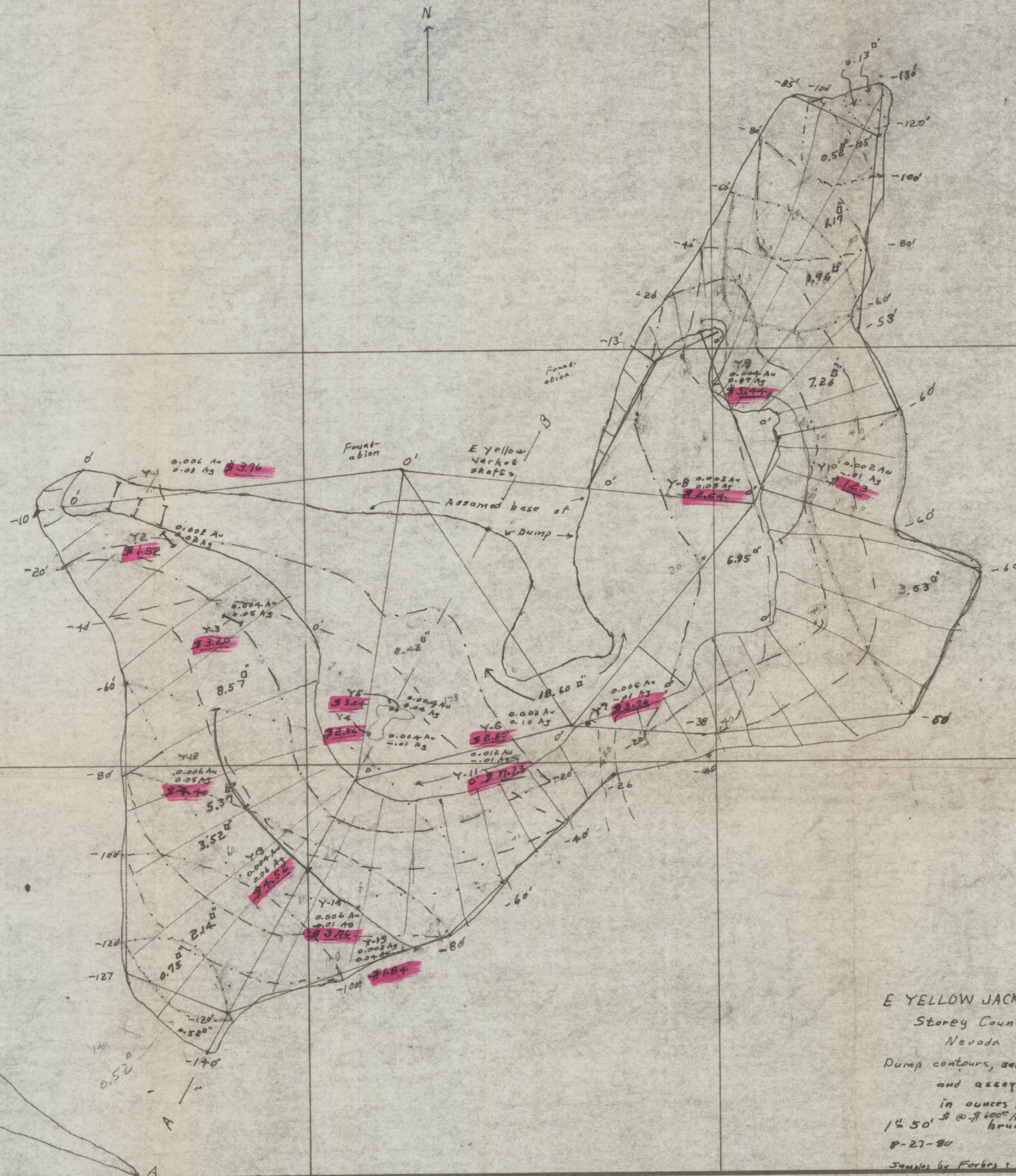
YELLOW JACKET DUMP

Sample ----- Per Ton -----Description-----

#	ounces	\$ @	
	gold silver	\$600/oz	gold
		\$16/oz	silver
Y-1	0.006 0.01	3.76	From 3 slots, N side coarser material, sp slimes ± 1 " S side slimy material $\pm \frac{1}{2}$ ".
Y-2	0.002 0.02	1.52	Yellowish altered dump, ± 1 " and fine slimes. 12'
Y-3	0.004 0.05	3.20	15' along yellow dump, $\pm \frac{1}{2}$ "
Y-4	0.004 -.01	2.56	5' vertical in a pit, banded yellow and black dump material, 90% $\pm \frac{1}{2}$ ".
Y-5	0.004 0.04	3.04	2 cuts from a trench, W part \pm of 1" to 2", overlays E part. W part is iron stained dike??? sp. miner- alization ??dike??. E part is yellow dump.
Y-6	0.002 0.10	2.80	Grab from bulldozer cuts, mostly oxidized.
Y-7	0.006 -.01	3.76	6' vertical cut on side of bank, mixed oxidized and black material.
Y-8	0.002 0.09	2.64	Surface grab from bulldozed area.
Y-9	0.004 0.19	5.44	Surface grab, ± 20 ' below crest of dump, mixed material, mostly oxidized.
Y-10	.002 -.01	1.23	Surface grab from bulldozed area.
Y-11	.012 1.01	7.23	Surface grab from area mixed by bulldozed
Y-12	.006 0.05	4.40	Along yellow dump material.
Y-13	.004 0.06	4.56	" " " "
Y-14	.006 -.01	3.76	" " " "
Y-15	.002 .04	1.48	Probably waste.

* sample weights varied from 15 to 50 pounds.

Level	Spere inches	Tons each level @ 125 Tons per ft	Tons between 20' levels - nearest thousand
0	18.60	2325	43,000
-20'	15.37	1921	39,000
-40'	15.83	1979	33,000
-60'	10.86	1356	19,000
-80'	4.69	586	10,000
-100'	2.66	333	4,000
-120'	0.88	110	2,000
-140'	0.65	81	
		Total Tons	150,000



E YELLOW JACKET DUMP
Storey County,
Nevada
Dump contours, sample sites
and assays
in ounces per ton.
1/2 50' @ 1600' Au, 1600' Ag
Brunton, Cape
8-27-80
Samples by Forbes & Nier

120000167