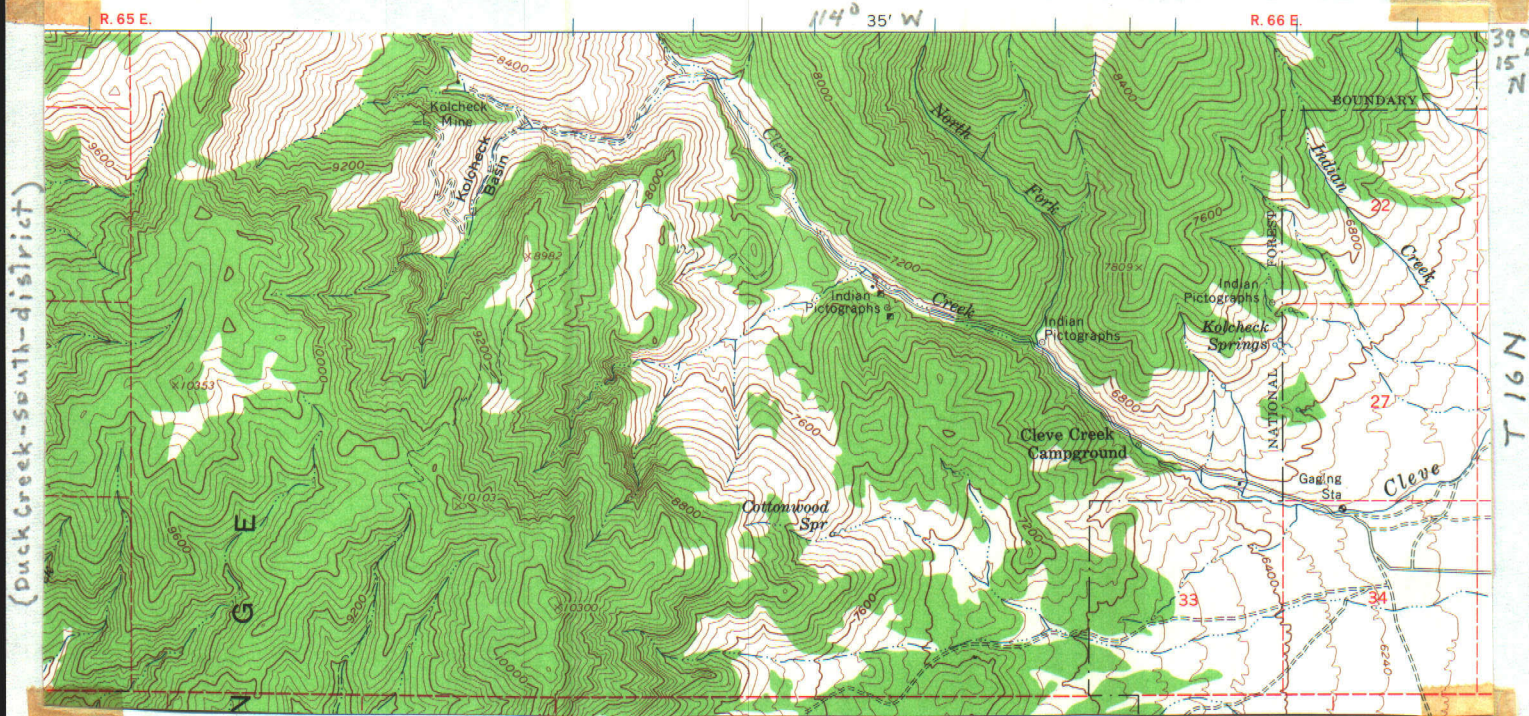


1120 0003

White Pine Co.-general

Item 70

| R 66 E (unsurveyed)



Cleve Creek area (district)

Connors Pass 15'-quad.

KOLCHECK CREEK DISTRICT

(Cleve Creek)

Wh. Pin - general
Iron 70

MR 1923

Kolchek Creek district.—The Kolchek mine, 3 miles northwest of Cleveland Creek, produced a small lot of ore which was treated in a 4-ton amalgamation and concentration mill erected on the property. The mill was dismantled at the end of operations. About 75 tons of ore was treated, and 1 ton of concentrate, containing 2 ounces of gold and 55 ounces of silver, was sold. A little gold and silver bullion was caught on amalgamation plates.

MY 1952

Cleve Creek District.—The Kolchek mine was developed for tungsten in 1952; incidentally, some gold ore containing silver was shipped to a smelter.

MY 1953

Cleve Creek District.—L. K. Requa developed a new ore body at the Kolchek mine and shipped 32 tons of tungsten ore averaging 3.15 percent WO_3 . The property was sold to Cleve Creek Mines, Inc., in December 1953.

3.15
32
—
630
945
—
100,80