

0880 0004

Near (219)
Item 5

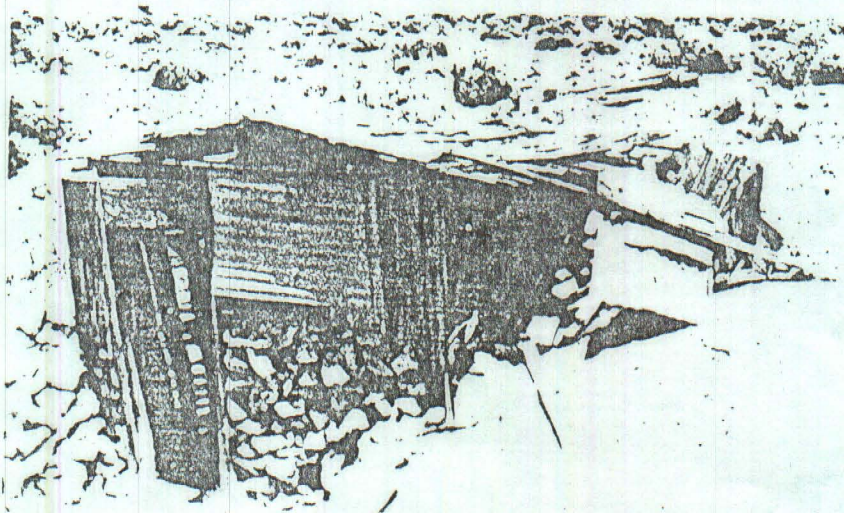
Location Number: NY 070

Location: Cabin and Mine Site
Coordinates: 37°42' / 116°49' T3S R46E S9
Elevation: 6095'
Map Sources: USGS Cactus Spring Quadrangle
References: Personal Communication with Cecil Lang; Site Investigation
6/22/77
Photographs: PlusX-JMC#4: 20
Status: Potential National Register Site

The site lies west of Cactus Flat in a steep-walled, east-west-trending canyon of the Cactus Range where the mountains rise more than 7300 feet. There are several prospects and several mines. Activity in the Cactus Spring Mining District began in 1914; these mines were probably active at that time.

One mine was dug 5-1/2 feet wide and 6 feet high and with a rail track. The mine was not explored, although a shelf, a cabinet, and clothing hanging from nails along an interior wall were observed. A water pipe reaches about 150 feet into the mine. Extending from the mine is a narrow-gauge (18-inch) rail track about 140 feet long with small rail spikes driven into the ties. A 4-foot wide and 5-foot-high prospect was dug 12 feet into the slope. It still holds a bench and a 12" x 12-foot-long log used as a table. These, along with a wash basin and plates indicate that this is where the miners had their meals. A bed frame lies near a collapsed wooden structure that has only part of a wall remaining intact. Other historic debris was observed nearby.

Downhill from the railroad track is a dugout, about 7 feet wide and 9 feet deep, with walls constructed partially of rock. Angular rock chinked with mud forms the lower 3-1/2 feet of the front wall. The wood-framed upper portion is topped by a low-rise gabled roof with



a wood covering, to which corrugated metal appears to have been attached.
The rubble walls lean precariously forward, causing the structure to be weak.