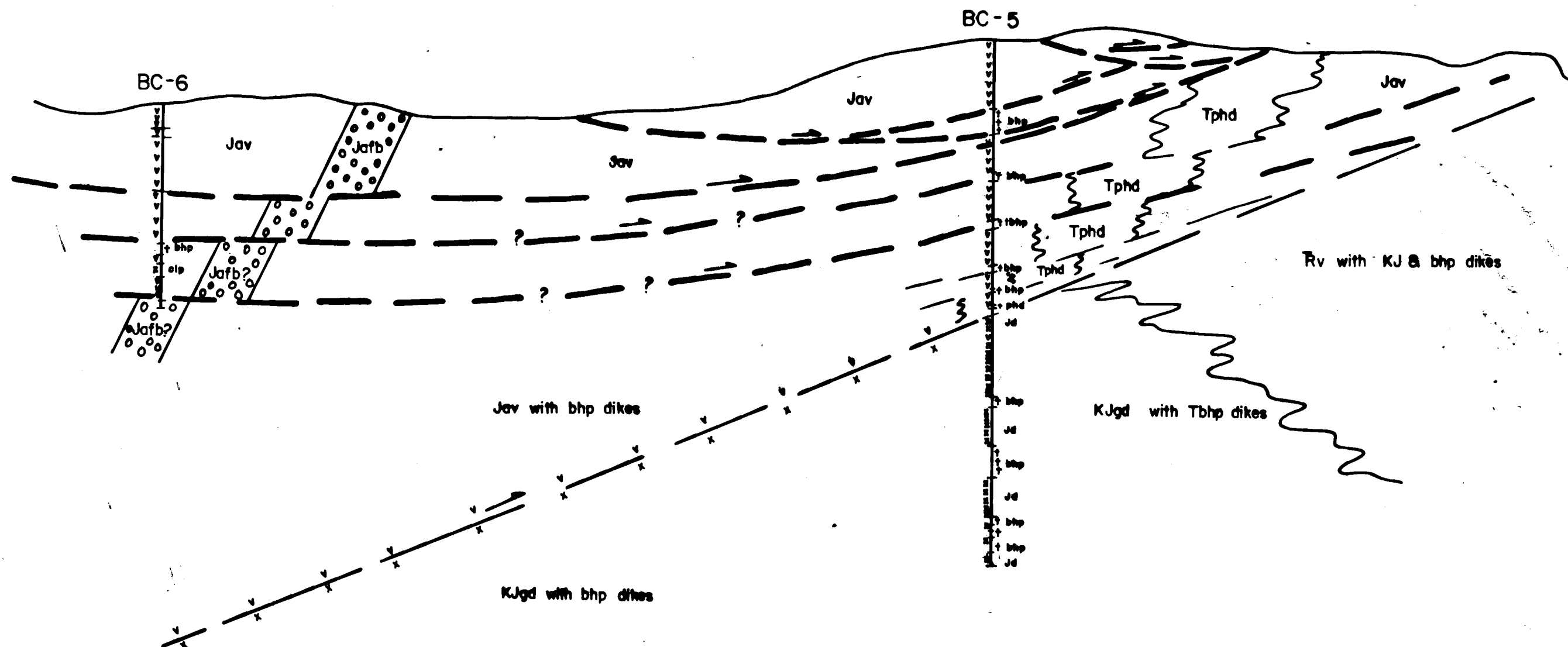


W

E



Dip on fault determined from  
that on cross section through  
DHS BSW-7 and BC-2-4;  
also from outcrop trace joined  
to DH transition into Jd in BC-5

BUCKSKIN PROJECT			
E-W CROSS SECTION THROUGH BC-6,5			
CONOCO		Continental Oil Company MINERALS DEPARTMENT Petro, Nevada	
DATE BY	DATE	SCALE	STATE
E. LORING	8-22-81	1" = 500'	NV
DRAWN BY	KAREN KLING		

Conoco (Buckskin Project)

m 75

Item 15

35

0770 0109