



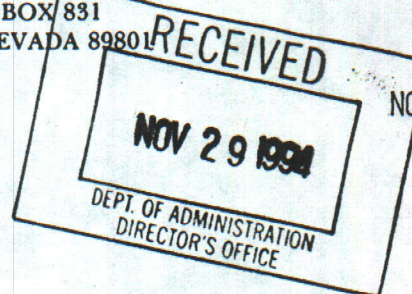
United States Department of the Interior

BUREAU OF LAND MANAGEMENT
ELKO DISTRICT OFFICE
3900 E. IDAHO STREET
P.O. BOX 831
ELKO, NEVADA 89801

45
Item
TAKE
PRIDE IN
AMERICA

IN REPLY REFER TO:

1793.6 (NV-013)



NOV 22 1994

Dear Interested Party:

The Elko District Bureau of Land Management, in cooperation with Newmont Gold Company, will be preparing an Environmental Impact Statement (EIS) on the Bootstrap Project Plan of Operations.

Newmont Gold Company of Carlin, Nevada, has submitted a Plan of Operations to re-open their Bootstrap open pit mine and initiate mining at the Tara open pit mine, located 1,500 feet south of Bootstrap. The proposed mines and associated facilities are located in portions of Sections 2, 3, 10, 11, 14, and 15 of Township 36 North, Range 49 East, MDM; approximately 30 air miles northwest of Carlin, Nevada. Newmont developed the Bootstrap open pit mine in 1974, and the heap leach facility in 1977. Operations were conducted through 1984. Newmont performed closure and reclamation procedures on the leach facility during 1987 and 1988. The proposal is to re-open the Bootstrap pit and develop the new Tara pit, create two new waste dumps, develop a new heap leach facility, and reroute and upgrade the existing access and haulage roads. Following public notice and comment, Newmont acquired a permit from the U.S. Army Corp of Engineers to divert Boulder Creek around the planned mining activities. Diversion construction has commenced on private land and is expected to be completed in early 1995. Newmont will not be required to dewater the mines, because both mines lie within Barrick Goldstrike's permitted cone of depression. Expected life of the combined project is approximately seven years. Mining would cease at the Bootstrap project area prior to cessation of dewatering by Barrick. While part of the proposed action would be confined to previously disturbed areas, including 121 acres of public land and 153 acres of private land, additional surface disturbance is anticipated on approximately 802 acres of public land and 288 acres of private lands. (See attached maps from the Plan of Operations: (1) General Location, (4) Proposed Operations and Surface Ownership, (6B) Bootstrap/Capstone and Tara Cross Sections).

The purpose of the proposed action is to allow for mining and heap leaching of gold ore at the proposed Bootstrap/Capstone and Tara mines. Without this action, the new gold deposits could not be developed.

The National Environmental Policy Act regulations have provided the Bureau of Land Management with the authority to direct the preparation of this EIS. In addition to any issues identified through the scoping process, BLM specialists have identified the following issues as having potentially significant impacts:

- a) Wildlife Resources: including Mule Deer Migration
- b) Mine Pit Water Quality;

The issues of cultural resources, reclamation, geology and minerals, hazardous materials, air quality, paleontology, social and economic values, recreation and wilderness, visual resources, soils and watershed, vegetation, grazing management, access and land use, and noise will also be analyzed. The cumulative effects of the proposed action will be evaluated in terms of each resource issue and with other activities within the areas of concern. The proposed project must meet or exceed all Federal, state, and local environmental regulations and standards.

A range of alternatives (including but not limited to alternative reclamation measures and the no action alternative), as well as mitigating measures, will be evaluated to identify the most appropriate means to minimize environmental impacts and to assure that the proposed action does not result in undue or unnecessary degradation of public lands.

The Elko District Bureau of Land Management is inviting public comment on this proposal for issues, concerns and opportunities that might exist regarding the mine's expansion. The issues, concerns and opportunities will subsequently be used to focus the preparation of the EIS.

Two scoping meetings are scheduled for the purpose of soliciting input from the public concerning the development of the proposed mines. Newmont Gold Company personnel will be on hand to answer any questions regarding the Plan of Operations.

The first meeting will be held at 7:00 p.m. on December 7, 1994, at the Elko District Bureau of Land Management, 3900 East Idaho Street, Elko, Nevada. The second meeting will be held at 7:00 p.m. on December 8, 1994, at the Holiday Inn on 1000 E. 6th Street, Reno, Nevada.

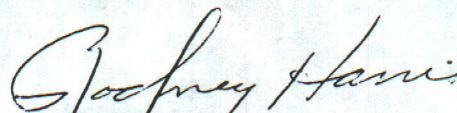
Comments will be received on the Plan of Operation during the public meetings scheduled in this bulletin. Written comments will be accepted until the close of business on January 3, 1995. They should be mailed to:

Bureau of Land Management
ATTN: Bootstrap EIS Coordinator
P.O. Box 831
Elko, NV 89803

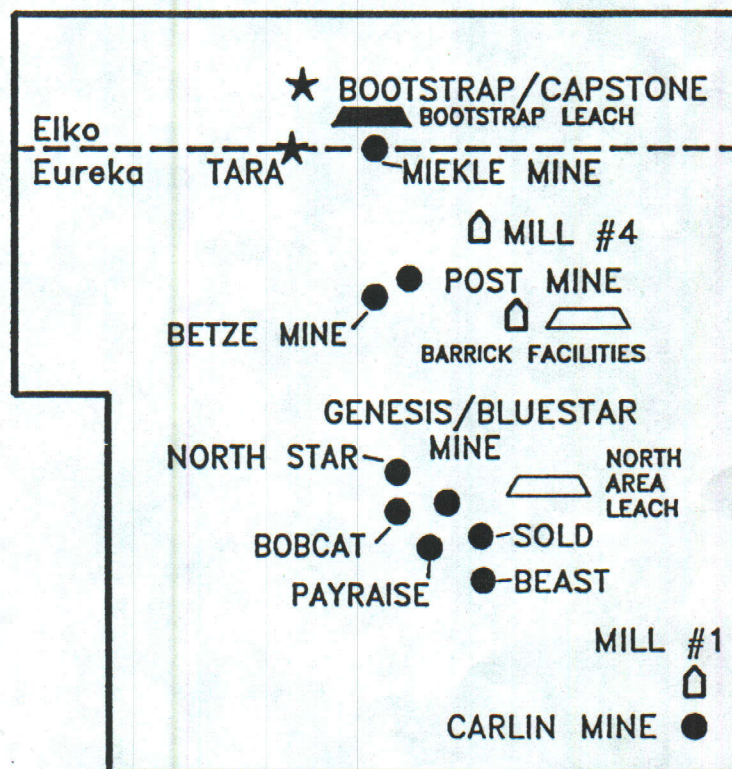
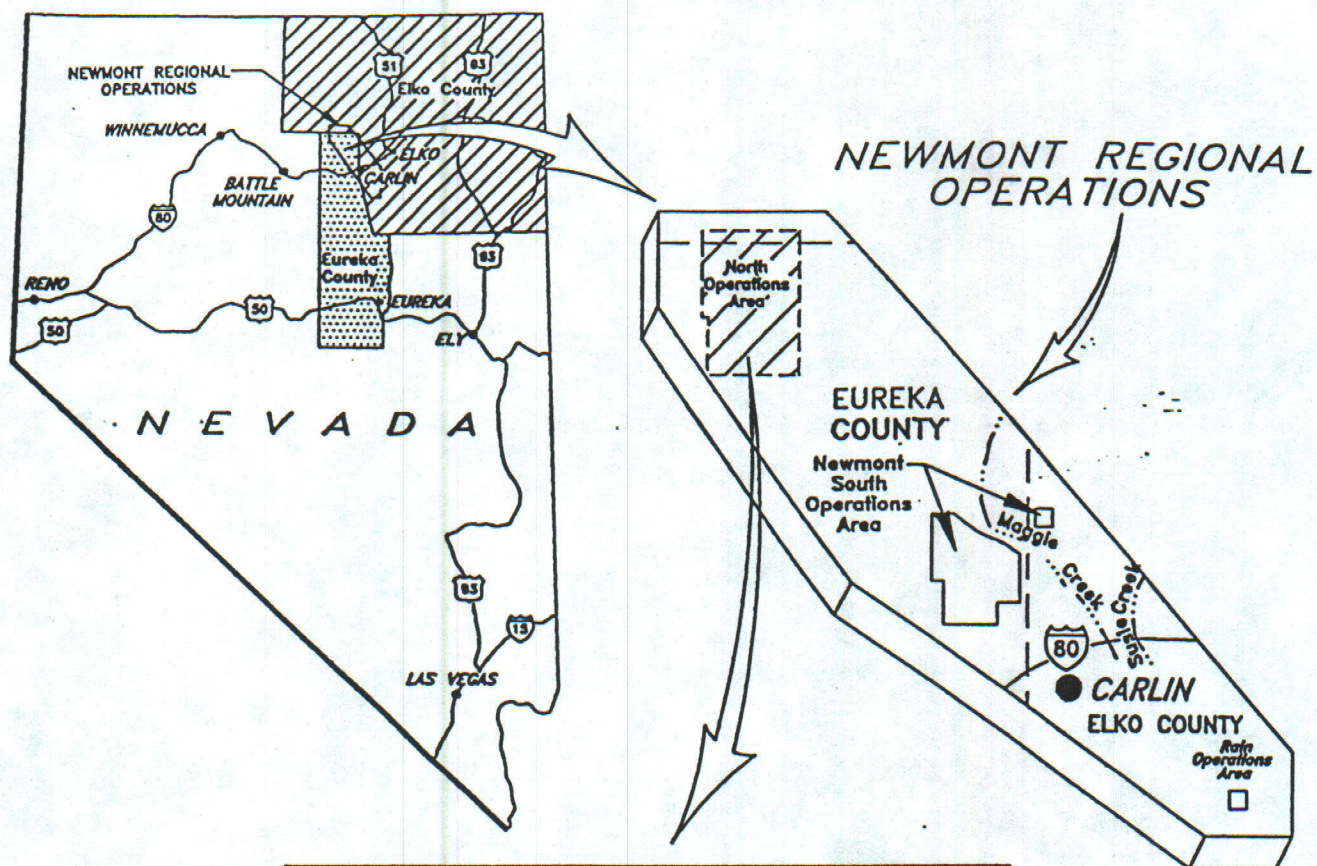
A draft Environmental Impact Statement should be available for public comment in the summer of 1995.

Should you have any questions, please contact Deb McFarlane, Bootstrap EIS Team Leader, at (702) 753-0200.

Sincerely yours,


RODNEY HARRIS
District Manager

Enclosure: As stated above



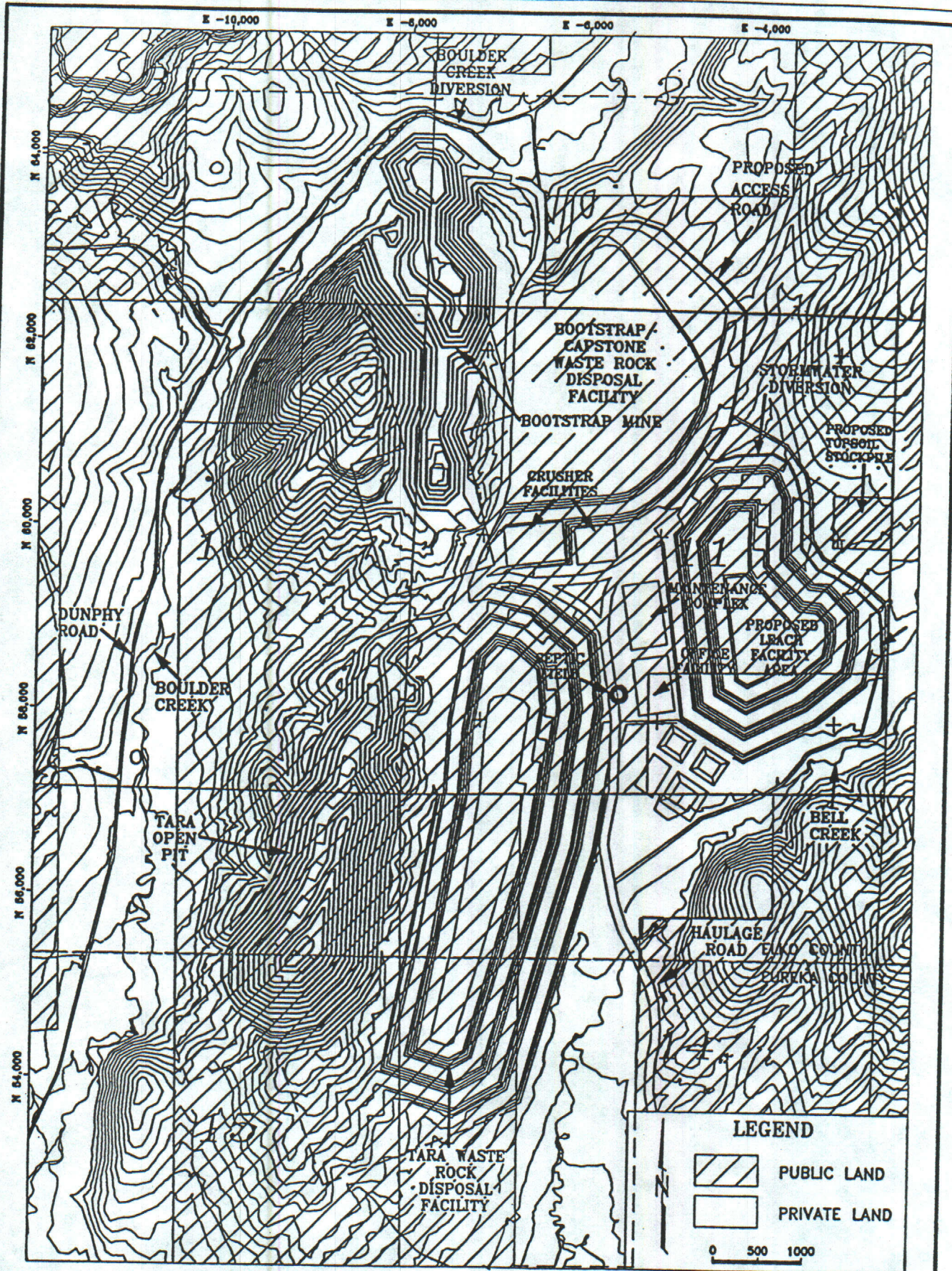
Scale: Not to Scale
 Drawn By: S. Tottle
 Date: June 8, 1994

NEWMONT GOLD
 COMPANY

Newmont
 Gold

FIGURE 1

GENERAL LOCATION

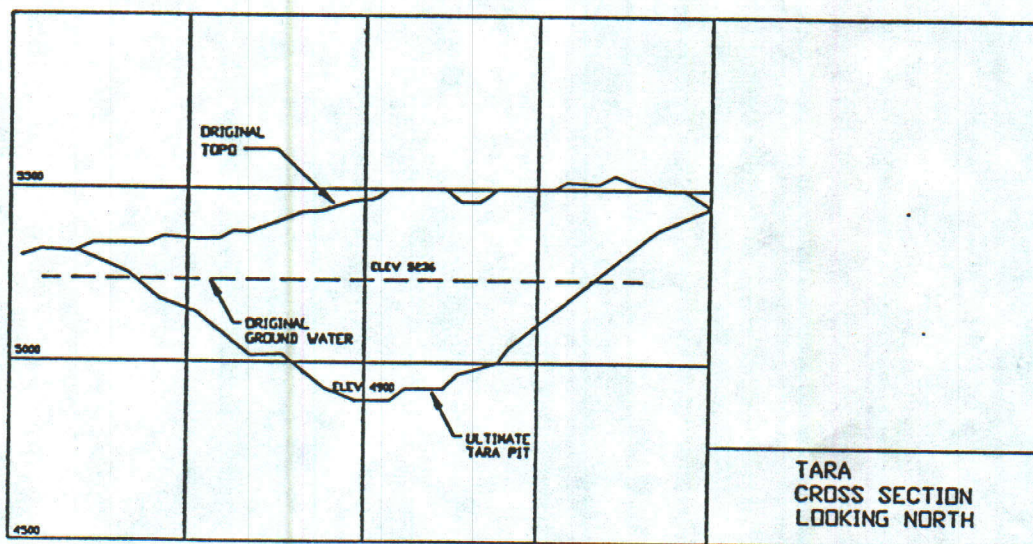
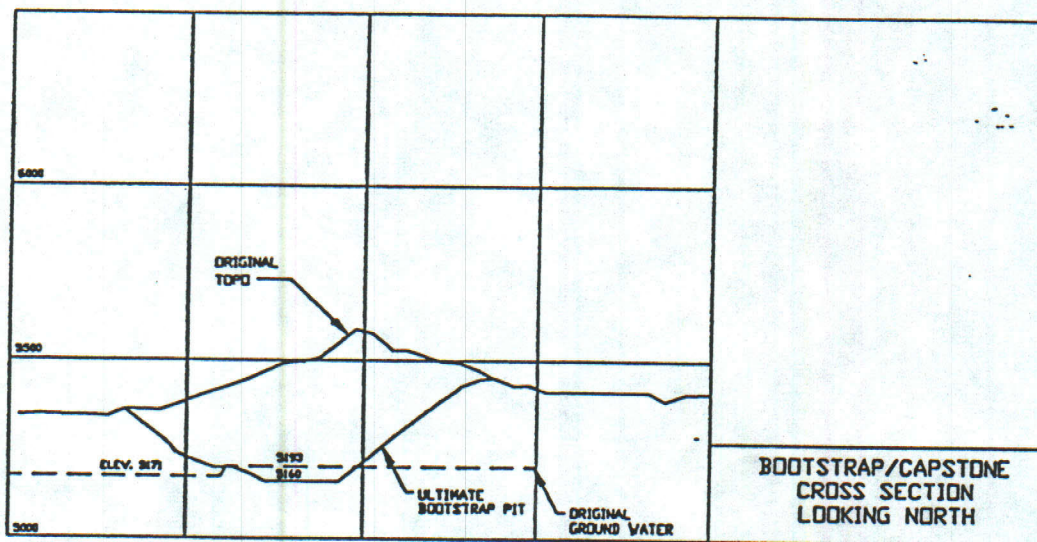


Scale: As Shown Drawn By: S. Tottle Date: October 10, 1994

Newmont
Gold
Company

FIGURE 4

PROPOSED OPERATIONS AND
SURFACE OWNERSHIP



SCALE: N.T.S.

DRAWN BY:
C. COLEMAN

DATE: 10/18/94

**Newmont
Gold
Company**

FIGURE 6B

BOOTSTRAP/CAPSTONE AND
TARA CROSS SECTIONS

BOOTSTRAP.CNV