

0610 0007

(324) 8
Item

BLACK HORSE DISTRICT

1943

file Black Horse

Osceola District.-Black Horse District.

NEVADA
WHITE PINE COUNTY

The Gilded Age Mining Co., operating in the Osceola district, southeastern White Pine county, and in late years the largest gold producer in that county, has closed down its gold mine, with a 1,200-ft. shaft, in compliance with the WPB order and is developing two scheelite deposits near by. R. E. Margenau, of Ely, is manager.

E. & M. J., Mar. 1943.

The Gilded Age Mining Co., John Blanchard of Texas, president, is employing about 10 men in its mine and mill in the Black Horse district (White Pine co.). The mine, the Gold King mine, is being developed for scheelite. Daily production averages about 5 T of ore, gravity concentration plant on the ground having a 25 T capacity. R. E. Margenau, Ely, sec. and gen. man.; B. E. Rees, Ely, gen. super.; Ira Vahlaningham, Goode Sta., Ely, mill super., master mechanic. The company closed its Gilded Age gold mine in the Osceola district near Ely last October.

Mining Journal, Phoenix, Ariz., Mar. 30, 1943.

Black Horse Dist.

NEVADA
WHITE PINE COUNTY

The Gilded Age Mining Co. is said to be producing a high-grade scheelite concentrate in its 25-ton tungsten mill on its Gold King mine, in the Black Horse district, White Pine County, a short distance northeast of its productive gold mine at Osceola, which made reported gold production of \$175,000 in 1939. Development work has been conducted in late months on two other tungsten properties in nearby districts. The company has its main office in Grosse Pointe, Mich. John B. Blanchard, of Grosse Point, is president, and R. E. Margenau, of Ely, is manager.

E. & M. J. June 1943

MY 1949

Black Horse District.—H. B. Hersey & Anna Lee Tilford shipped 16 tons of ore containing 1 ounce of gold and 532 ounces of silver to a smelter from the Anna Lee mine in 1949.

MY 1952

Black Horse District.—Graham Development Corp. developed the Gold King tungsten mine 54 miles southeast of Ely.

MY 1953

Black Horse District.—Graham Development Co. shipped tungsten ore from the Gold King mine to a custom mill. The mine was explored on a DMEA loan.

ar MY 1954
re

Black Horse District.—K & B Mining Co. shipped silver ore to the McGill smelter from the Valley View mine.

0610 0007

324

Item 8

BLACK HORSE DISTRICT

MR
1905

The Black Horse district, near Osceola, is being explored. The two most prominent new companies are the Mabel Mining Company and the San Pedro Mining Company.

MR 1905

MR
1906

The largest gold producer was the Black Horse Mines Development Company, in the Black Horse district. The ore in this district is free milling and the values are nearly all gold. Development work is being actively carried on.

MR
1907

Black Horse and Osceola districts.—The San Pedro mines in Black Horse district, under the management of the Amalgamated Nevada Mines and Power Company, increased their production somewhat over that of 1906, notwithstanding being curtailed in output on account of litigation.

Lincoln, 1923, p. 242

BLACK HORSE Gold, Silver

Location. The Black Horse District is located at Black Horse on the E. flank of the Snake Range. Black Horse is 49 m. by road E. S. E. of Ely which is on the N. N. R. R. The Sacramento District adjoins the Black Horse District on the N.W. and the Osceola District on the S.W., and it is sometimes considered as a section of the latter district.

History. The Black Horse District was discovered in 1905 and produced from 1906 to 1911. The Black Horse Mine operated an arrastra in 1909 and an amalgamating mill in 1910.

Geology. The ore deposits are auriferous veins carrying a little silver, according to Hill, and the country rock consists of Paleozoic sediments cut by granite porphyry.

Bibliography. MR1905 274 MR1907 I 383 MR1910 I 534
MR1906 300 MR1909 I 428 MR1911 I 700

226-7 Hill 1907 206-7. Bib.

Weeks, F. B., "Geology and Mineral Resources of the Osceola Mining District, White Pine County, Nev.," USGS B 340 (1908) 123-4.

MR 1925 *Black Horse district.*—The Silver Peak claim, 10 miles southwest of Gandv. Utah, produced 26 tons of first-class silver-lead ore.

MR
1909

Blackhorse district.—Development work only was done in the Blackhorse district.

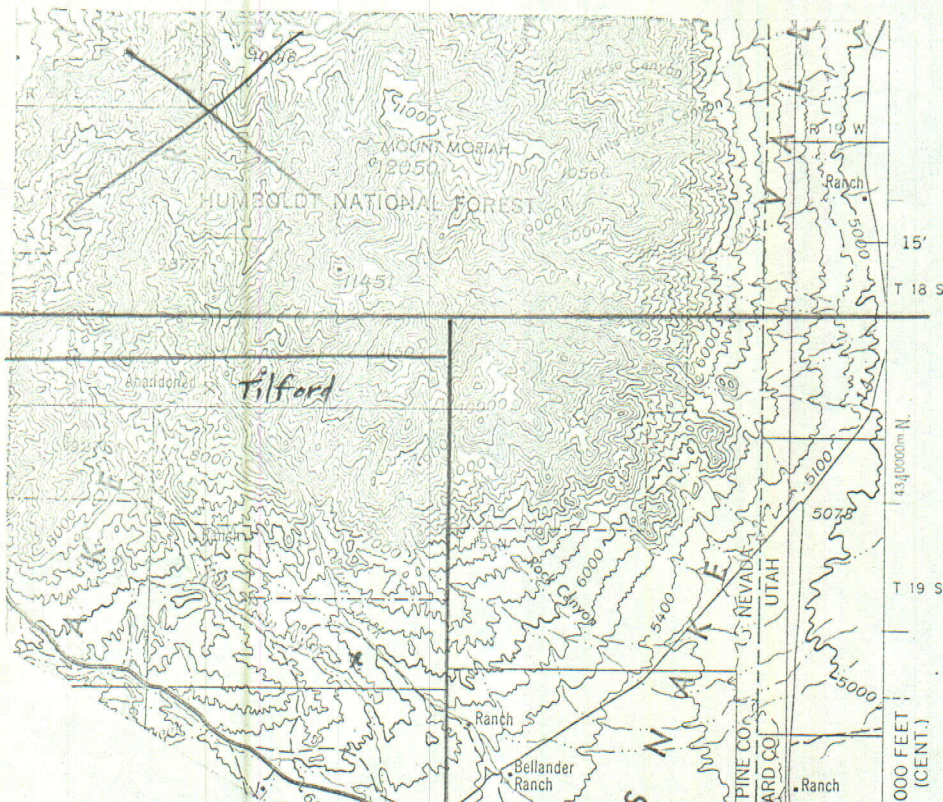
1909 — a few tons treated in an arrastra

1910 See Osceola

1910 San Pedro yielded gold & silver ore

(adjoint Sacramento district)

de



Horse Canyon district (area)

See Rock Canyon area

Bellander mine

de

Black Horse district

Scale 1:250,000

5 0 5 10 15 20 Statute Miles

(Sacramento district)

(Osceola district)

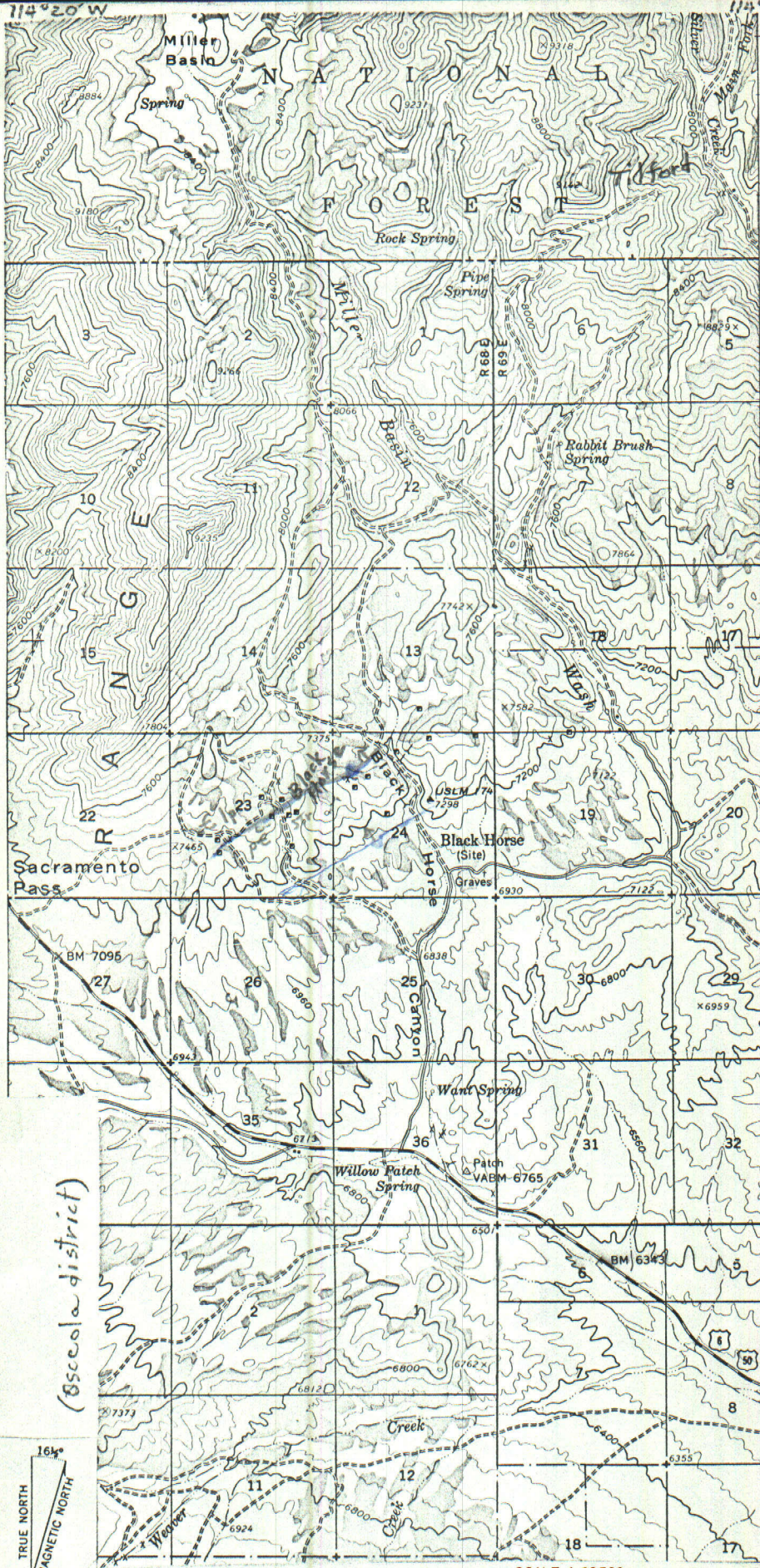
no 15' quad sheet for this area

Bellander mine →

APPROXIMATE MEAN DECLINATION, 1959

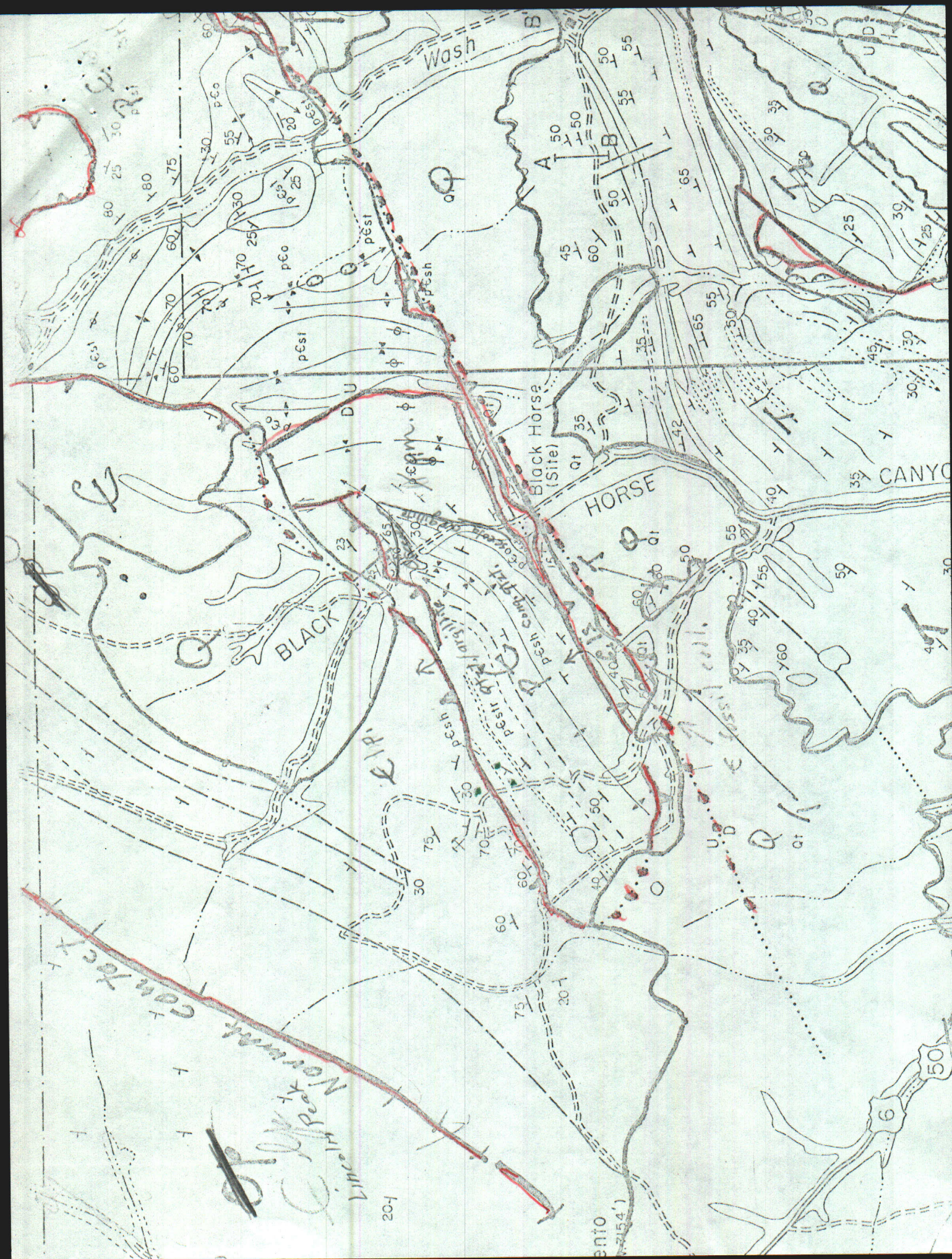
SACRAMENTO PASS QUADRANGLE
NEVADA-WHITE PINE CO.
15-MINUTE SERIES (TOPOGRAPHIC)

Black Horse district



SCALE 1:62500

4 MILES



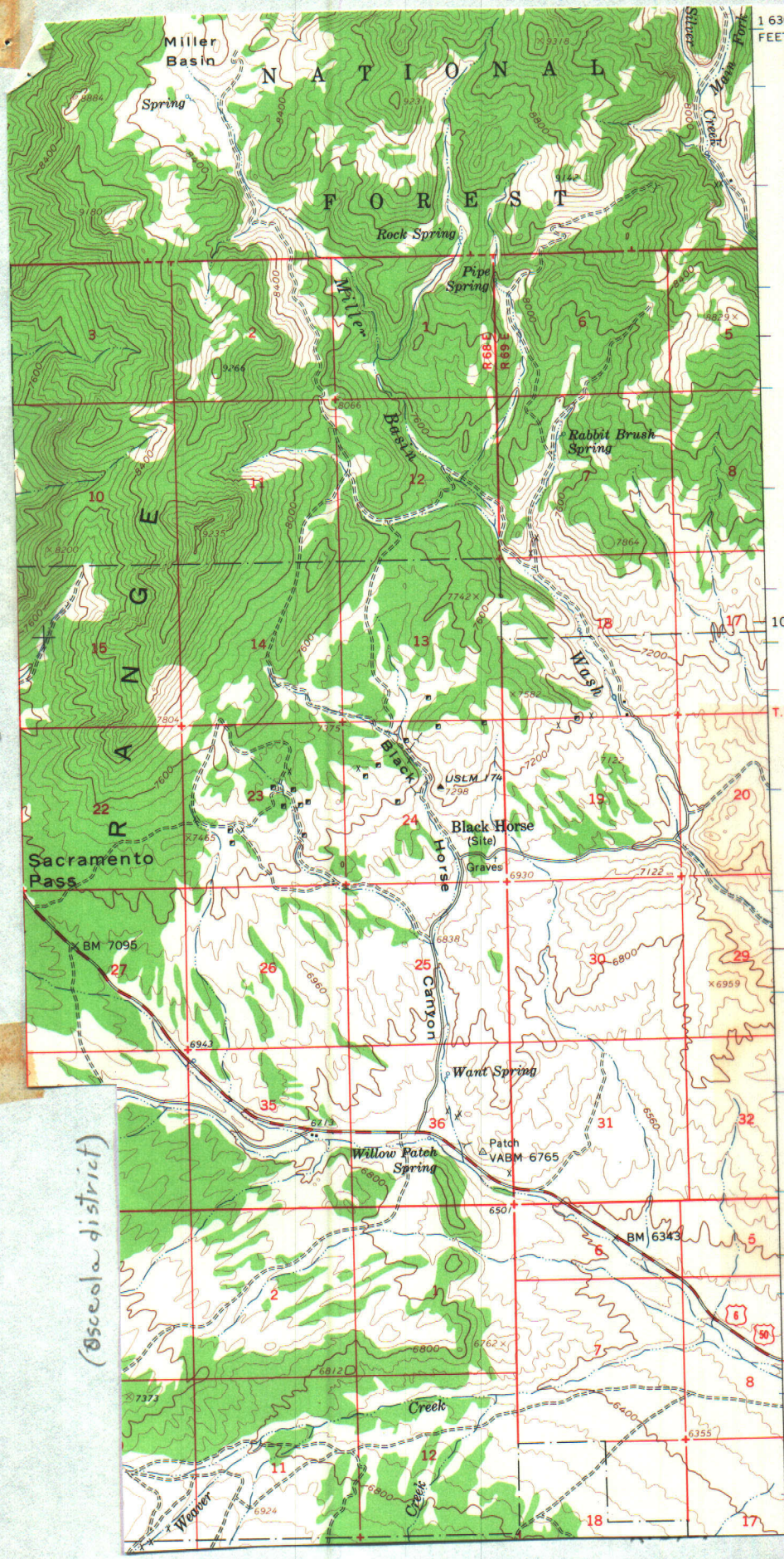


114°20'W

114°15'W

(Sacramento district)

(Osceola district)



1:630,000
FEET

10' 39" N

T. 15 N.

BAKER 9 MI.
DELTA (UTAH) 89 MI.

Bellander mine →

Black Horse district

no 15' quad sheet for this area

(adjoins Sacramento district

R68E R69E



← del. tr "Abandoned"
insert Tilford

T15N

← Bellander mine

• Bellander
Ranch

Black Horse district

Scale 1:250,000