

0530 0008

(215)
Item 8

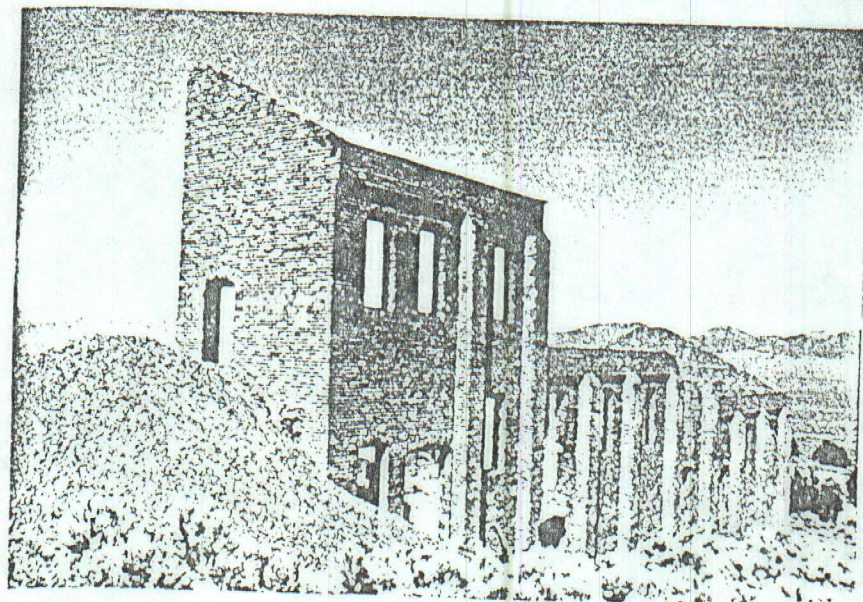
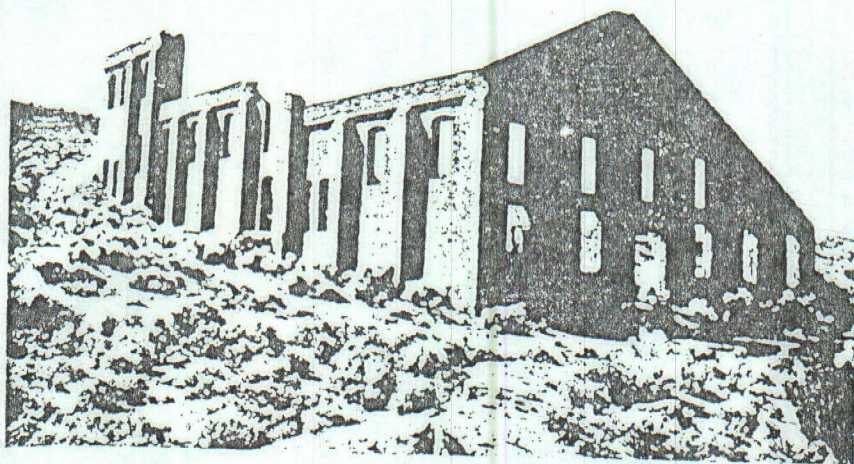
Location Number: NY 020

Location: Highbridge Mill Ruins
Coordinates: 38°35' / 116°52' T9N R45E S36
Elevation: 7230'
Map Sources: USGS Belmont East Quadrangle; Toiyabe National Forest Map
References: URS/Blume Files; Site Investigation 7/27/77
Photographs: KR64-JMC#2: 21; PlusX-JW#T5: 16-21
Status: Potential National Register Site

The standing ruin of the Highbridge Mill is found in an area east of the Toquima Range between Monitor Valley and Ralston Valley, southeast of Belmont.

The mill was one of three that served the mines of the Belmont area. (For geographical and historical setting, see Belmont.) Built about 1870 of brick

manufactured in Belmont, the structure bears a resemblance to the Belmont courthouse and even in ruin provides an excellent example of western American architecture of the 19th century.



The structure is about 100' x 50' and approximately 50 feet high. It is supported on a concrete foundation. The bricks of its exterior were laid three deep in a running bond and are about 1 foot thick. Four walls remain standing of what was once a split-

level, 2-story structure. The outline of the roof is indicated by the shape of the upper elevations: it had a medium pitch toward the front, to the top of the second story, and sloped steeply downward to the height of the first-story walls in the rear. Each elevation contains many windows, paired vertically and separated by engaged brick columns. Most of the windows and all of the doors in the remaining walls have arched brick lintels and brick sills. On the interior, concrete foundations and piers are visible, but no interior walls or floors remain.