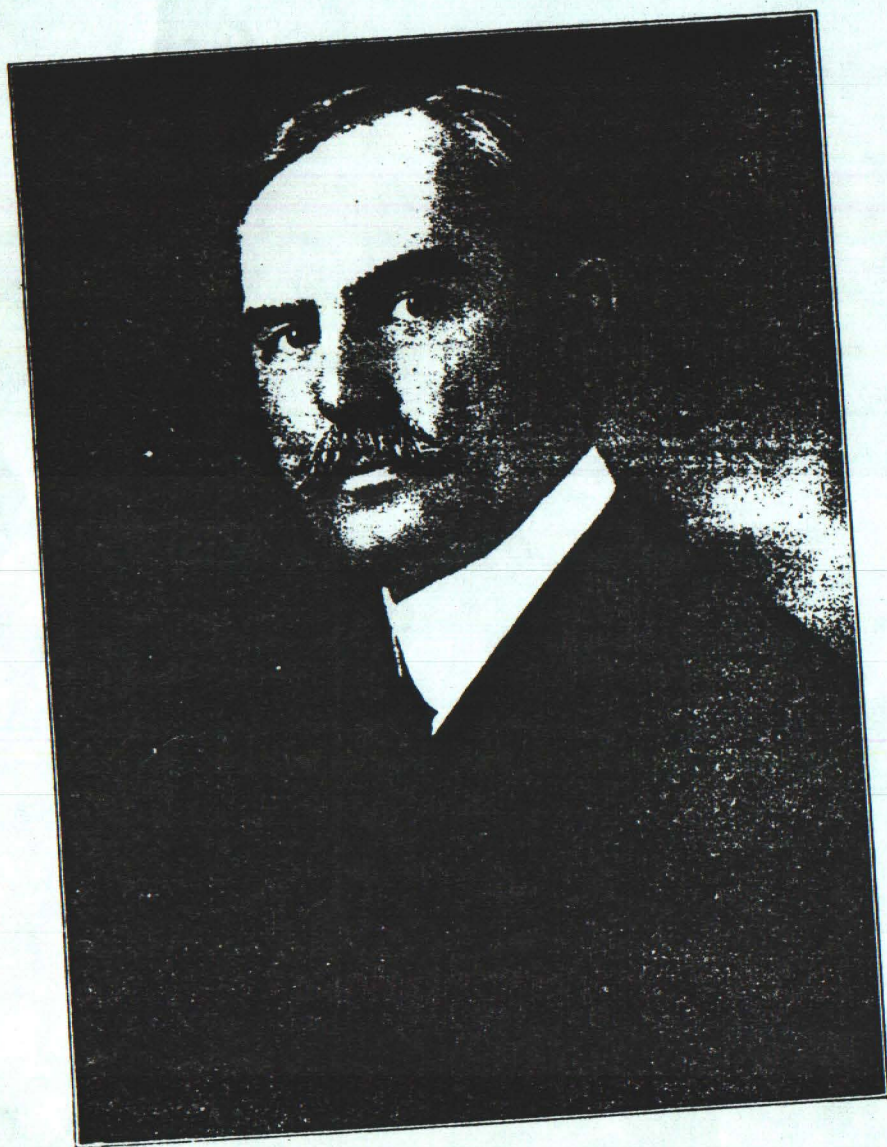


0500 0019



JOHN D. RYAN.

CHAIRMAN OF THE BOARD OF DIRECTORS OF THE ANACONDA COPPER MINING CO.,  
WHOSE BUTTE MINES YIELD 10% OF THE WORLD'S COPPER SUPPLY.

INTERNATIONAL EDITION  
**THE MINES HANDBOOK**  
AN ENLARGEMENT OF

**THE COPPER HANDBOOK**

Founded by Horace J. Stevens, 1900

A MANUAL OF  
THE MINING INDUSTRY OF THE WORLD

BY

**WALTER HARVEY WEED, E.M.**

Former Geologist in the U. S. Geological Survey, 1883-1906; Member  
Institution of Mining and Metallurgy of America; Fellow  
Geological Society of America; Author: Copper  
Mines of the World; Geology of Butte,  
Montana; Nature of Ore  
Deposits, etc.

VOL. XIV

Supplementing Volumes I to XIII

Price \$15.00

34055

PUBLISHED BY

W. H. WEED

New York City

1920

190  
Item 19



and generator, 525 cu. ft. compressor, 25-h. p. hoist, with smaller compressor and hoist, also necessary buildings, numbering 18.

**Production:** total to end of 1919, about 400 tons of ore said to have averaged 31% copper and \$12 gold and silver.

Property shut down most of 1919, as owing to high overhead charges, and lack of large reserves costs were too high to yield a profit. Mine needs further development before it can become a substantial producer.

#### NONPAREIL MINING CO.

NEVADA

**Address:** M. Hellicre, sec., Reno, Nev. L. T. McAtee, pres.  
Inc. 1919, in Nevada.

**Property:** Nonpareil group on Lincoln hill, Rochester mining district, Pershing county; mine is credited with a production of \$30,000 in gold.

#### NORTHERN LIGHT COPPER CO.

NEVADA

**Property:** 6 claims, 20 miles east of Yerington, Lyon county, producing some copper ore in August, 1919. The mine was closed for a considerable time, but late developments are said to be "surpassing expectations."

#### NORTH MOUNTAIN MINING CO.

NEVADA

Controlled by John Dern, 515 Dooly Bldg., Salt Lake City, Utah. Mine operated under lease by Marion L. Thomas, 2 Rector St., New York City, and J. W. Walker, Cherry Creek, Nev.

**Property:** Gilligan group, 11 patented claims in the Egan district, near Cherry Creek, White Pine county, first operated in 1870 under management of General Rosencrans.

Ore occurs in veins cutting quartzite, that are from 4 to 5' wide, run E-W. and dip steeply N. In 1884, a 1,600' tunnel was driven which is reported to have cut the vein 1,100' from the portal at a depth of about 600' on its dip. The demonetization of silver stopped further development until 1918, when operations were resumed. Management reports recently opening up 4' of ore on the tunnel level running 25 oz. silver.

#### NORTH NEVADA MINES CO.

NEVADA

**Address:** C. K. Jarvis, Reno, Nev.

**Property:** claims at Fairview, and 7 claims on Rebel creek, northern Humboldt county, acquired late in 1919. The latter have 600' of tunnels and other work, ore carrying silver and gold.

#### NORTH STAR MINING CO.

NEVADA

**Address:** G. F. Brown, Mina, Nev.

**Property:** 6 claims, 3 miles from the Simon mine and near the Olympic. A shaft was to be sunk to develop a gold-bearing vein, in the winter of 1919-20.

#### OLD IMPERIAL MINING & MILLING CO.

NEVADA

Cherry Creek, White Pine county, Nev. Property advertised as sold for \$125 delinquent tax, January, 1916.

#### ONONDAGO MINES CORPORATION

NEVADA

**Office:** 1209 Union Trust Bldg., Providence, R. I.; also 50 Broad St., New York City. **Mine office:** Elko, Nev.

**Officers and directors:** Homer L. Carr, pres.; Erik F. Carlson, v. p.; E. L. Kerstetter, sec.-treas. M. F. Quinn, mgr.; Frank S. Connors, supt.

**Inc.** Feb. 16, 1917, in Nevada. **Cap.**, \$300,000; par \$1; all outstanding. Listed on Boston Curb and traded in on New York Curb. Security Transfer & Registrar Co., New York, registrar and transfer agent. Controlled by Mines Holding & Operating Corporation, New York, which owns 277,560 shares. Operating expenses for 1918 amounted to \$66,244.

**Property:** the Onondago and Zenoli mines about ½ mile apart, in Safford district, Nev. The Onondago group of 6 claims, 100 acres, 1½ miles from Barth, Elko county, is developed by 800' tunnel and 200' shaft. Another property of about 200 acres, near Elko and held under option is being developed. Claims said to show 3' of high-grade silver-lead ore near surface, with the vein outcrop traceable for 2,000'. Ore: sulphide, occurs in fissure vein in limestone and said to average 40% lead and 4 oz. silver. Developed by 165' incline shaft.

**Equipment:** power plant destroyed by fire to be re-built, and a 50-ton