

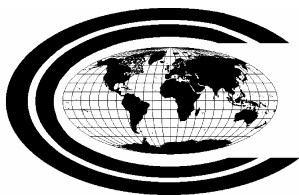
ID NUMBER	6000 2570
DISTRICT	Battle Mountain
DIST_NO	0480
COUNTY	Lander
TITLE If not obvious	Executive Summary - Independence Gold-Silver Property, Lander County, NV
AUTHOR	Carrington Consultants
PAGES (including summary sheet)	5
DATE OF DOC(S)	2004
FF Only?	
MULTI_DIST Y / N?	N
Cross-references:	
QUAD_NAME	Anfler Peak 7.5'
P_M_C_NAME (mine, claim & company names)	Wilson Independence Property; Carrington Consultants; General Gold Corporation; Northern Dynasty Minerals; Independence Deep target; Noranda Exploration Independence Mine; Newmont; Phoenix Project;
COMMODITY If not obvious	Gold
NOTES	Property summary; claim map; geology; resource estimates; cross section; assays Location: 4 pgs + 2 pgs SS = 6 Digital only

Keep docs at about 250 pages if no oversized maps attached (for every 1 oversized page (>11x17) with text reduce the amount of pages by ~25)

SS: DD 1/20/2010
Initials Date
DB: MB 1/21/2010
Initials Date
SCANNED: MT 2.3.2010
Initials Date

P.M.C

Claims: IND, N IND 1, N IND 2, IND 3, IND 4;
Fortitude



**CARRINGTON
CONSULTANTS**

To: General Gold, Corporation
From: Robert G. Carrington
Date: October 28, 2004
Subject: Wilson Independence Executive Summary

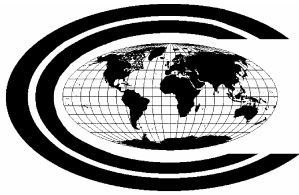
EXECUTIVE SUMMARY
INDEPENDENCE GOLD - SILVER PROPERTY, LANDER COUNTY, NV

The Wilson Independence Property covers a mineralized zone on strike with the World Class, Fortitude / Phoenix Gold Skarn Deposit (Past Production + Reserves exceed 7 million ounces). The property has potential to develop a 2 to 5 million ounce high grade underground resource in the Antler Sequence, together with a smaller surface / near surface resource in the overlying Pumpnickel Formation. Situated at the intersection of the Battle Mountain-Eureka Gold Trend and the Northern Nevada Rift (Twin Creeks-McCoy lineament), the Independence Project, like Fortitude and Cove McCoy, is one of a number of Gold Skarns which occur along the Battle Mountain – Eureka and Northern Nevada Rift Zone mineral lineaments.

The Independence property consists of 14 whole and fractional unpatented lode mining claims, which cover approximately 240 acres, and forms an island in Newmont Gold's holdings. Core and RC drilling to date indicate up to 1.64 million ounces of gold contained in two targets. Excellent geological potential exists to discover 2 to 5 million additional ounces of gold on the property. These two targets are referred to as the Independence Deep (A Target), and the Independence Surface (B Target).

Independence Deep

The Independence Deep target has immediate potential to develop 1.4 to 2 million ounces of contained gold. Northern Dynasty Minerals reported an estimated resource of 818,000 ounces of contained gold, with an average grade of 0.270 ounces of gold per ton, and Noranda Exploration, in an interoffice memo estimated 2 million ounces. Recent modeling by MDA of Reno, Nevada indicates that lack of detail in existing drill logs fails to demonstrate sufficient continuity of geologic controls and mineralization and prevents either of these volume estimates to be considered a resource. A large body of mineralized material is clearly indicated by previous drilling. It is likely that proper logging and subsequent geologic modeling has potential to result in the identification of a resource within the ranges stated above. All core, approximately 25000 feet, is stored on site, and necessary logging could easily be completed during the fall of 2004. A budget for this is estimated at \$70,000.00, including limited additional sampling.



CARRINGTON CONSULTANTS

Mineralization identified to date occurs as a sub-horizontal bedding “replacement” consisting principally of the light calc-silicate suite and retrograde alteration of the skarn zone. This mineralization is contained in the lower plate of the Golconda Thrust in rocks of the Battle Mountain and Edna Formations of the Antler Sequence.

The principal deep target is, structurally on strike, mineralogically and geologically identical with, and exhibits comparable geophysical responses to the Fortitude Deposit of Battle Mountain Gold’s. The Fortitude Deposit, located just 4000 feet to the north, contained roughly 2.8 million ounces of gold in a compact ore 2.4 million ton body.

Independence Surface

The Surface, consists of both historic mill tailings and oxidized mineralization in the near surface. The tailings consists of roughly 70,000 tons of tailings which historical tests indicate contain 0.04 ounce gold per ton, and 4 ounces of silver per ton. Historic pan concentrates of samples from the tails contained 1.9 ounces per ton of gold, and 22 ounces per ton of silver, per ton of concentrate.

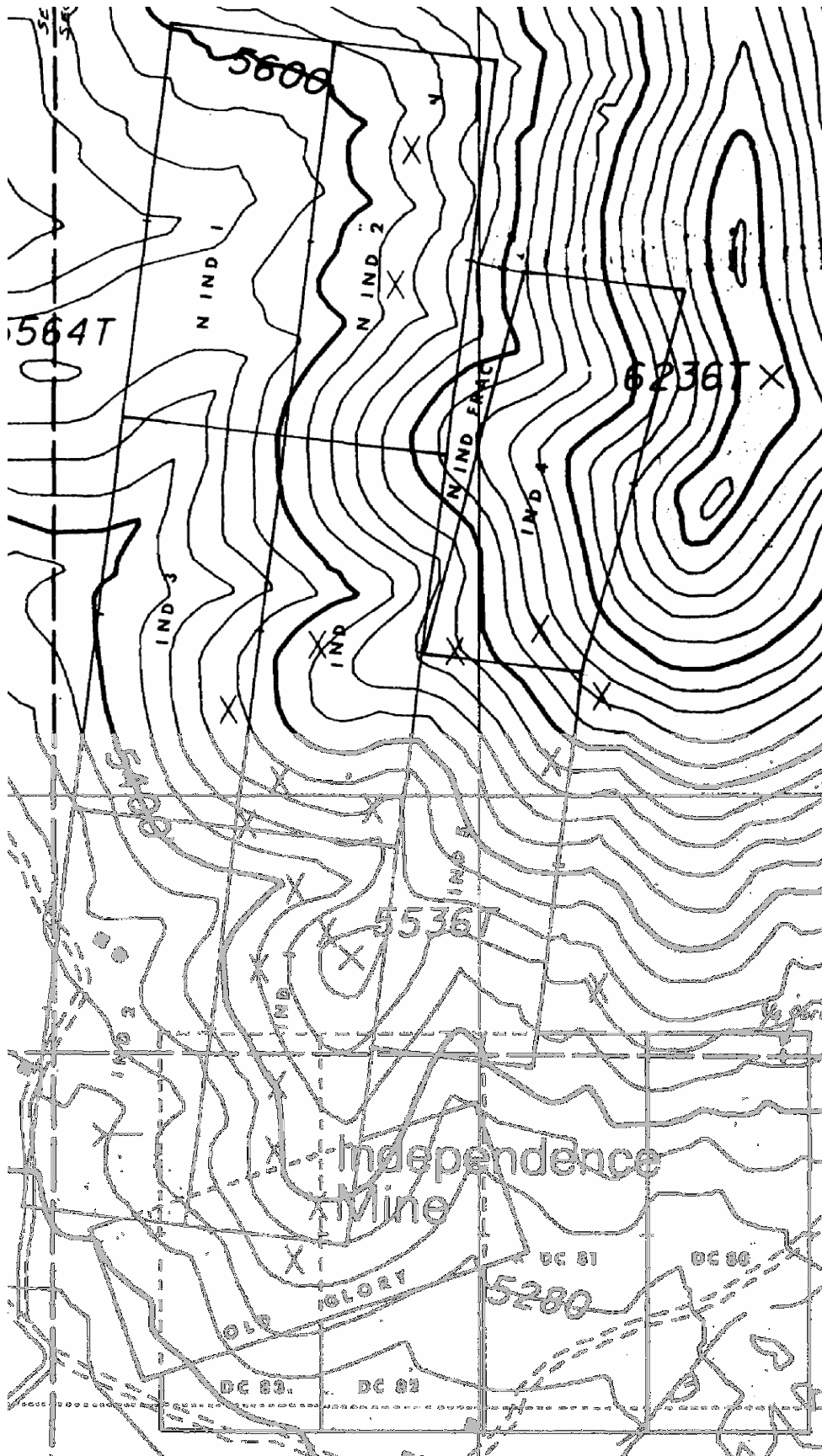
The surface and near surface mineralization, contains drill intercepts to 40 feet at 0.148 opt Au, and several holes have been lost in mineralized material containing in excess of 0.1 opt Au. The Surface Target contains an oxide target potential in the range of 250,000 to 300,000 ounces of gold. This target is hosted entirely in the Pumpnickel Formation. To date 75 drill holes and roughly three (3) miles of underground workings have penetrated portions of this target, all of which have encountered highly anomalous to high grade mineralization. Historic samples from the mine workings are reported to contain up to 19,000 ounces of silver, and 64 ounces of gold. The principle limiting factor for surface resources is the lack of drilling information. It is highly likely that additional drilling will develop resources sufficient increase the near surface resource to more than 300,000 contained ounces of gold.

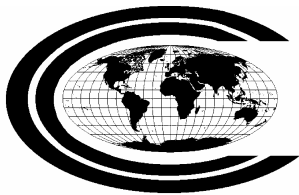
Mill & Building On Site

A relatively intact 50 to 75 ton per day Counter Current – Decantation cyanide mill is situated on the property. The present condition of the jaw crusher, cone crusher and ball mill are uncertain but probably could be returned to serviceable condition. A complete set new rubber liners for the ball mill are on site. The mill is housed in a comparatively new metal clad building erected in 1987.

Location and Surrounding Land and Mineral Ownership:

The Wilson Independence claims are completely surrounded by Newmont Mining’s holdings and are an island with legal access. Newmont’s Phoenix Project is adjacent to the Independence claims and is scheduled to commence operation in mid 2006. Our high grade underground ore is typical of local ore and should be suitable to process in the Phoenix plant. This is easily one of the best gold/silver exploration addresses in Nevada.





CARRINGTON
CONSULTANTS

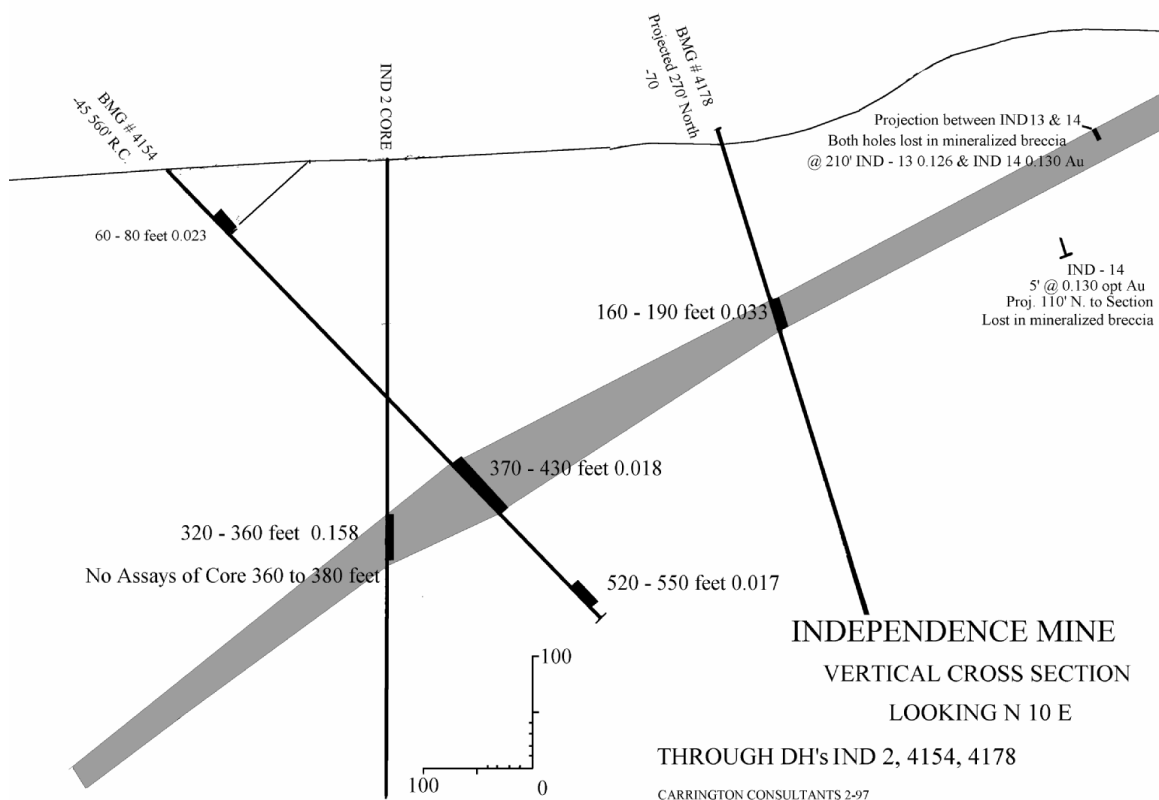


PLATE 3

P. O. Box 325 Virginia City, Nevada 89440
Telephone: (775) 847 - 7772 Fax (775) 847 - 7415
E-mail geologists@aol.com